



*no boundaries*

# 03 EXPLORER SPORT



EXPLORER SPORT

INTERIOR

SPECIFICATIONS

PAINT AND TRIM

WHEELS/ENGINE

ACCESSORIES



Explorer Sport XLT Premium in Silver Birch Metallic.



## EXPLORER SPORT

You like to do a lot of different things. Sometimes all at once. Explorer Sport is the kind of no-nonsense vehicle that can handle it. With its big 16" wheels and sporty two-door style, expansive interior, and 4-wheel power disc anti-lock brakes, Sport has a multi-faceted personality that's right at home with your own. Adventurous on the outside. Accommodating on the inside. And downright protective at heart.

Shown at right with optional moonroof.





Explorer Sport XLT Premium 4x4 in Black.

Explorer Sport XLT Premium 4x4 in Red Fire Metallic.



Road maps? Don't need 'em. Especially when you're behind the wheel of Explorer Sport. Available in 4x2 or rugged 4x4 capability, Explorer Sport takes you off the beaten path. So when Friday at 5 o'clock finally rolls around, and you're ready to roam, you can go wherever you want. With whatever you want. Feel free to explore the local countryside, or maybe the local sports shop. Explorer Sport makes it well worth the trip.



XLT Premium in Medium/Dark Flint two-tone. Shown with optional leather seating surfaces and 290-watt Pioneer® sound system.



1



2



3



2

## EXPLORER SPORT INTERIOR

Now here's a commanding view of the road. Explorer Sport's large gauges keep you informed. And you've got everything at your fingertips: power windows and door locks, air conditioning, and an AM/FM stereo with CD player. On XLT models, you'll also get speed control, tilt steering and a remote keyless entry system with a driver's door-mounted keypad. Opt for the Comfort Group and you add nice features like a power driver's seat, automatic headlamps, an electrochromic auto-dimming rearview mirror and an overhead console with compass.

- 1 If a tree falls in the forest... well, you know how the story goes. With Explorer Sport's optional **290-watt Pioneer® sound system** with 6-disc in-dash CD player and 7 speakers, you'd have it cranked up so high you wouldn't hear it anyway.
- 2 Between the front seats is a **convenient center console** with cupholders front and rear. Open it up and you'll find plenty of space – even a handy, removable storage bag. So pack your stuff, and take it with you. Standard on XLS and XLT.
- 3 **Power side mirrors with security approach lamps** (XLT and XLT Premium) illuminate the ground around the front doors to make nighttime entries and exits easier and more secure.



Your "roughing it" days are definitely over. Especially when you've settled into Explorer Sport's comfortable front bucket seats with adjustable head restraints. There's plenty of room to seat four, with plenty of room to move around. And for your peace of mind, Explorer Sport features standard front airbags\* and 4-wheel anti-lock brakes.

- 1 Let the sun shine in. Explorer Sport's optional **power moonroof** tilts open at the touch of a button, or fully retracts when you want wide-open fun.
- 2 When the drive is long, the available **front power lumbar supports** are just what your back needs. And to take off the chill in a hurry, Explorer Sport also offers available **front heated seats**.
- 3 You always keep your cool, but how about those rear-seat passengers? Give them the option with available **rear-seat climate and audio controls** including headphone jacks. They're conveniently located at the rear of the center console for easy access.
- 4 Finally, you can go exploring and actually bring home all the treasures you find. Or take them all with you when you go. Explorer Sport's **71 cu. ft. of cargo space** (with rear seat folded down) lets you slide in gear as large as a bike. Thanks to the **50/50 split rear seat**, you can even fold down just one side to free up cargo space and still fit a friend in back.

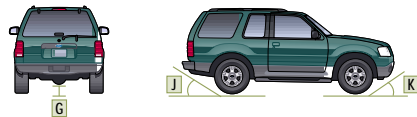
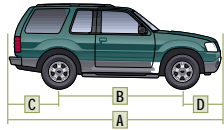
\*Always wear your safety belt and secure children in the rear seat.



XLT Premium in Medium/Dark Flint two-tone. Shown with optional leather seating surfaces.



## SPECIFICATIONS



Exterior	4x2/4x4
A. Overall length	180.4"
B. Wheelbase	101.8"
C. Overhang – rear	44.0"
D. Overhang – front	34.6"
E. Overall width	70.2"
F. Height	68.4"/68.3"
G. Ground clearance (rear axle)	6.7"
H. Load floor height	29.1"
I. Ramp breakover angle	22.9°/22.8°
J. Angle of departure	23.1°
K. Angle of approach	28.3°
<b>Interior</b>	
<b>1st row</b>	
Head room	39.4"
Shoulder room	56.2"
Hip room	53.0"
Leg room	42.4"
<b>2nd row</b>	
Head room	38.9"
Shoulder room	57.9"
Hip room	43.6"
Leg room	36.6"
<b>Cargo (cu. ft.)</b>	
Maximum cargo volume	71.1
Behind 2nd row	35.3

## STANDARD FEATURES

<b>Mechanical</b>
4.0L SOHC V6 engine
4-wheel power disc brakes with anti-lock braking system (ABS)
100,000-mile tune-up interval*
Battery saver
Body-on-frame construction
Electronic 2-speed shift-on-the-fly 4-wheel-drive system (4x4 models only)
Fuel tank – 16.8-gallon capacity
Power rack-and-pinion steering
Rear-wheel drive (4x2 models only)
Spare – Full-size steel wheel
Stabilizer bars – Front and rear
Suspension – Front: independent Short- and Long-Arm; rear: 2-stage leaf springs
<b>Safety/Security</b>
Airbags – Driver and front passenger
Belt-Minder™ safety belt reminder
Fuel pump inertia shutoff switch
Headlamps-on alert chime
Height-adjustable shoulder safety belts – Front
Rear upper tether anchors and lower anchors for child safety seats
Safety belt energy management retractors – Front
Safety belt pretensioners – Front
SecuriLock™ – Passive anti-theft system
Side intrusion door beams
<b>Seating</b>
Front cloth bucket seats with 2-way adjustable head restraints and tip/slide feature
Rear cloth 50/50 split-bench seat with 4-way adjustable head restraints – Folds flat
<b>Interior</b>
Air conditioning
Assist handles – 2 front
Center floor console with 4 cupholders, padded armrest, removable soft-pack storage bag and convenience clip
Floor mats – Color-keyed front and rear
Power door locks
Power lock switch in cargo area
Power points – 2 in front, 1 in rear
Power windows – With one-touch-down driver's side feature
Tachometer
<b>Exterior</b>
2nd-row flip-open windows
Privacy glass – Fixed rear quarter windows and liftglass
Rear defroster
Roof rails
Solar tinted glass – Windshield, front doors and 2nd-row flip glass
Trailer tow – Class II receiver with 4-pin connector
Windshield wipers – Front: speed-sensitive intermittent with washer; rear: 2-speed intermittent with washer

\*Under normal driving conditions with regular fluid and filter changes.

## MODEL-SPECIFIC FEATURES/OPTIONS

XLS* 4x2 or 4x4	
XLT 4x2 or 4x4	
XLT Premium 4x2 or 4x4	
<b>Mechanical</b>	
<input type="checkbox"/>	5-speed manual transmission
<input type="checkbox"/>	5-speed automatic transmission
<input type="checkbox"/>	16" 3-spoke styled-steel wheels (16" steel spare)
<input type="checkbox"/>	16" 5-spoke cast aluminum wheels (16" steel spare)
<input type="checkbox"/>	16" bright cast aluminum wheels (16" steel spare)**
<input type="checkbox"/>	P235/70R16 all-season BSW tires
<input type="checkbox"/>	P235/70R16 all-season OWL tires (XLT Premium 4x2 only)
<input type="checkbox"/>	P255/70R16 all-terrain OWL tires (4x4 models only)**
<input type="checkbox"/>	Limited slip rear axle
<b>Seating</b>	
<input type="checkbox"/>	Leather Seating Surfaces <ul style="list-style-type: none"> <li>- Low-back front bucket seats with 4-way adjustable head restraints</li> <li>- 6-way power driver's seat</li> <li>- Heated driver and front passenger seats</li> <li>- Driver and front passenger power lumbar supports</li> </ul>
<b>Interior</b>	
<input type="checkbox"/>	AM/FM stereo with single CD and 4 speakers (60-watt)
<input type="checkbox"/>	AM/FM premium stereo with single CD/cassette and 4 speakers (80-watt)
<input type="checkbox"/>	AM/FM Pioneer® sound system with 6-disc in-dash CD player (290-watt)
<input type="checkbox"/>	Comfort Group <ul style="list-style-type: none"> <li>- Low-back front cloth bucket seats with 2-way adjustable head restraints</li> <li>- 6-way power driver's seat</li> <li>- Driver and front passenger power lumbar supports</li> <li>- High-series floor console with rear climate/audio controls and headphone jacks (replaces standard center console)</li> <li>- Overhead console with outside temperature display and compass</li> <li>- Autolamp (automatic on/off headlamps)</li> <li>- Electrochromic auto-dimming rearview mirror</li> </ul>
<input type="checkbox"/>	Convenience Group <ul style="list-style-type: none"> <li>- Autolock/relock</li> <li>- Leather-wrapped steering wheel</li> <li>- Remote keyless entry system with driver's door-mounted keypad</li> <li>- Speed control</li> <li>- Tilt steering wheel</li> <li>- Cargo shade</li> <li>- Security approach lamps in outside mirrors</li> </ul>
<b>Exterior</b>	
<input type="checkbox"/>	Power moonroof
<input type="checkbox"/>	Power outside mirrors
<input type="checkbox"/>	Premium Sport Group <ul style="list-style-type: none"> <li>- 16" bright cast aluminum wheels (16" steel spare)</li> <li>- Fog lamps</li> <li>- Front tow hooks (4x4 models only)</li> <li>- P255/70R16 all-terrain OWL tires (4x4 models only)</li> <li>- Side step bars</li> </ul>

■ Standard □ Optional — Not Available

\*Late availability. \*\*Available as part of Premium Sport Group.

Competitive comparisons based on publicly available information and Ford certification data at time of printing. Some features discussed may be optional. Vehicles shown may contain optional equipment. Features shown may be offered only in combination with other options or subject to additional ordering requirements or limitations. Following publication of the catalog, certain changes in standard equipment, options and the like, or product delays, may have occurred which would not be included in these pages. Your Ford Dealer is the best source for up-to-date information. Ford Division reserves the right to change product specifications at any time without incurring obligations.

PAINT AND TRIM COLORS

INTERIOR/EXTERIOR COMBINATIONS

Medium/Dark Pebble	
Medium/Dark Flint	
<b>XLS</b>	
■ ■	Oxford White
■	Harvest Gold Metallic
■	Estate Green Metallic
■ ■	True Blue Metallic
■ ■	Black
<b>XLT/XLT Premium</b>	
■ ■	Oxford White
■	Harvest Gold Metallic
■ ■	Zinc Yellow
■ ■	Red Fire Metallic*
■ ■	Estate Green Metallic
■ ■	Aspen Green Metallic
■ ■	True Blue Metallic
■ ■	Silver Birch Metallic
■ ■	Black

\*New for 2003.



Oxford White



Harvest Gold Metallic



Zinc Yellow



Red Fire Metallic



Estate Green Metallic



Aspen Green Metallic



True Blue Metallic



Silver Birch Metallic



Black

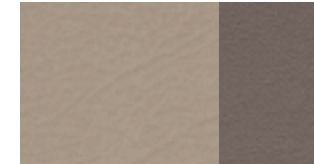
Ford uses clearcoat paint for beauty and protection. Colors shown are representative only. See your dealer for actual paint/trim options.



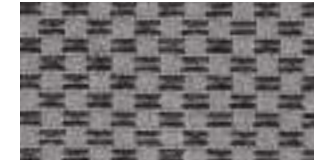
Medium/Dark Pebble Two-Tone Cloth  
Standard on XLS



Premium Medium/Dark Pebble Two-Tone Cloth  
Standard on XLT



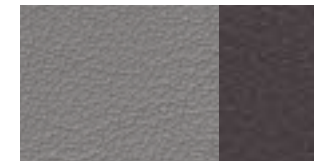
Medium/Dark Pebble Two-Tone Leather  
Available on XLT Premium



Medium/Dark Flint Two-Tone Cloth  
Standard on XLS



Premium Medium/Dark Flint Two-Tone Cloth  
Standard on XLT



Medium/Dark Flint Two-Tone Leather  
Available on XLT Premium



## WHEELS/TIRES



16" 3-Spoke Styled-Steel Wheel  
Standard on XLS\*



16" 5-Spoke Cast Aluminum Wheel  
Standard on XLT



16" Bright Cast Aluminum Wheel  
Standard on XLT Premium, optional on XLT

\*Late availability.

## ENGINE



### 4.0L SOHC V6

Horsepower: 203 @ 5250 rpm

Torque: 237 lb.-ft. @ 3000 rpm

Axle ratio: 3.73:1

Towing capabilities* (lbs.):	4x2	4x4
Manual	2940	2760
Automatic	5000	4820

\*Maximum capabilities shown are for properly equipped vehicles with required equipment and a 150-lb. driver. Weight of additional options, equipment, passengers and cargo must be deducted from this weight. For additional information, see your Ford Dealer.

## DEALER ACCESSORIES

- 1 The sturdy **Trailgate® table accessory** provides a quick and easy table for tailgate parties or roadside picnics. It's height adjustable and fits right into the available hitch receiver.
- 2 The **rooftop frame-mount bike carrier** by Yakima® fits the roof rails. It features a padded locking downtube arm and cable guides to protect brake and shifter cables.
- 3 This Yakima® **kayak carrier** installs without tools on the roof rails and carries up to four kayaks. Requires tie-downs and crossbars (available separately).
- 4 Stand back. Way back. You can still start your Explorer Sport with the **remote start** accessory. It turns on the ignition from up to 500 ft. away.
- 5 No need to ask directions. The **satellite navigation system** uses global positioning satellites to track your vehicle, then guides you to your destination.
- 6 With the **keyless entry keypad** you can have instant access. Just enter your personal identification number and it locks/unlocks the doors. It mounts without screws.



1



2



3



4



5



6

See your dealer for these and other great Ford Dealer-installed accessories.