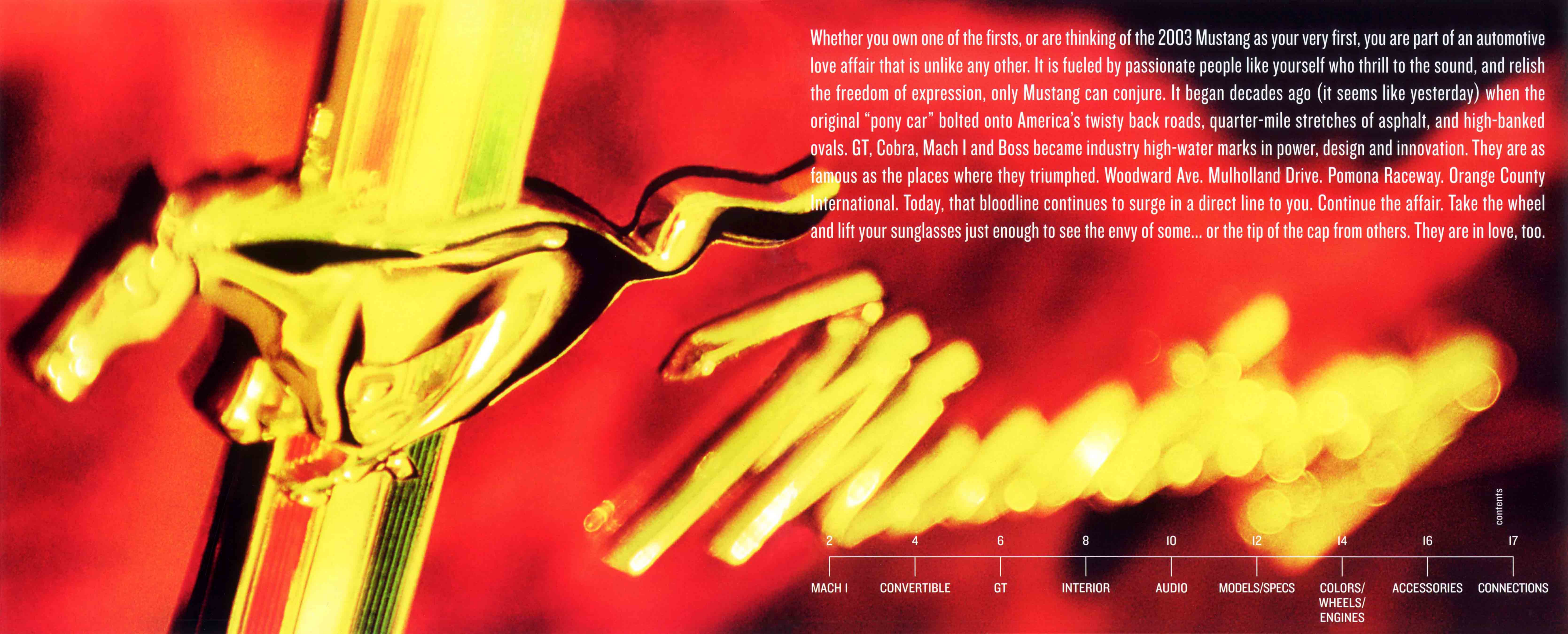


03 MUSTANG





Whether you own one of the firsts, or are thinking of the 2003 Mustang as your very first, you are part of an automotive love affair that is unlike any other. It is fueled by passionate people like yourself who thrill to the sound, and relish the freedom of expression, only Mustang can conjure. It began decades ago (it seems like yesterday) when the original "pony car" bolted onto America's twisty back roads, quarter-mile stretches of asphalt, and high-banked ovals. GT, Cobra, Mach I and Boss became industry high-water marks in power, design and innovation. They are as famous as the places where they triumphed. Woodward Ave. Mulholland Drive. Pomona Raceway. Orange County International. Today, that bloodline continues to surge in a direct line to you. Continue the affair. Take the wheel and lift your sunglasses just enough to see the envy of some... or the tip of the cap from others. They are in love, too.

2	4	6	8	10	12	14	16	17
MACH I	CONVERTIBLE	GT	INTERIOR	AUDIO	MODELS/SPECS	COLORS/ WHEELS/ ENGINES	ACCESSORIES	CONNECTIONS

contents



mach 1

NO NEED TO PINCH YOURSELF. MACH 1 IS INDEED BACK! 305 HORSES. THE LEGENDARY "SHAKER" HOOD DESIGN. SPECIAL INTERIOR. ALL DESIGNED TO QUICKLY TRANSPORT YOU DIRECTLY INTO NIGHTS FILLED WITH 5-SPEED STICKS, AWESOME POWER AND CHURNING TIRES.

- 1 The new Mustang Mach 1 has a unique gauge cluster specifically designed for the ultimate high-performance enthusiast. Easy to read. Great looking.
- 2 4.6L DOHC 305 hp V8. Multi-port Fuel Injection, of course. And more than enough low-end torque to overcome the stranglehold the asphalt has on your 17" wheels styled after the originals.
- 3 Pop the hood and let the world take a gander at the one-of-a-kind "shaker" hood. And after they stop talkin' about how cool it is... focus their attention on the low rumble only a massive V8 can create. Heaven.



See, if you pray hard enough and are really bad, history does repeat itself.

Introducing Mustang Mach 1. Now go forth and shaketh things up.



MUSTANG CONVERTIBLE

THE NIGHT IS WARM. AND THE ROAD IS SHOUTING "COME OUT AND PLAY." WHAT ON EARTH COULD BE MORE EXHILARATING THAN TO DROP THE TOP ON YOUR NEW MUSTANG CONVERTIBLE AND LET THE PONIES RUN AROUND FOR AWHILE? ONE WAY TO IMPROVE UPON THIS MOMENT IS TO OPT FOR THE V6 "PONY" EXTERIOR PACKAGE. BELOW ARE THE GREAT-LOOKING DETAILS. AHHH... THOSE SUMMER NIGHTS WITH NO PARTICULAR PLACE TO GO. CAN YOU IMAGINE?

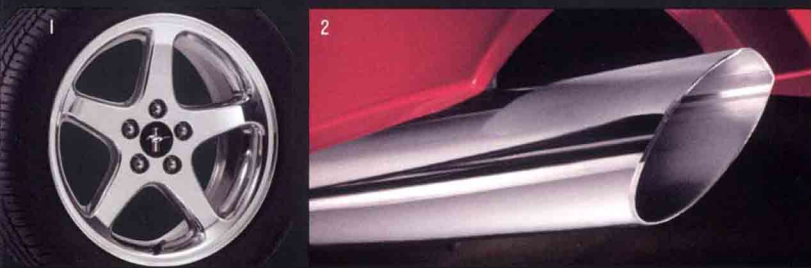
1 See that familiar figure running wild down the side in the photo to your left? This unique "Mustang Stampede" tape stripe is exclusive to the "Pony." And so are the 16" polished wheels that shine so brightly in the photo below.

2 This sculpted hood, with its oversized-scoop design, adds even more drama to an already aggressive look. And now we would like to direct your attention to the Pony featured in our big photograph. Notice the black letters on the back? That is also unique. We thought we would make it stand out better so all those people following you would know exactly what just blew past them.



Thinking of owning the road? Time to "pony up."

MUSTANG GT



DOES YOUR HEART BEGIN TO BEAT A LOT HARDER WHEN YOU HEAR THE SOUND OF A V8? THEN YOU ARE ONE OF US. AND MUSTANG GT IS YOUR KIND OF MACHINE. 260 HORSES (OR IN OUR CASE, PONIES). 9.4 HIGH COMPRESSION. 3.27:1 AXLE RATIO TO HELP MOVE YOU FROM THE LAUNCH PAD OTHERS FONDLY CALL A STOPLIGHT. AVAILABLE IN HARD OR SOFT TOP.

¹ Naturally, Mustang GT's 17" performance tires wrap around performance wheels. You have a choice of three. Either this optional 5-spoke 17" wheel forged from bright aluminum alloy, or the very dramatic GT Premium wheel displayed in the action photo to your right. All three, including the GT Standard Deluxe, are shown on page 15 so you can compare them "mano a mano."

² Bright polished stainless steel exhaust tips? You bet.

Some heated discussions
are best settled off-line.



INTERIOR



EVERYONE KNOWS THE IMPORTANCE OF A GREAT INTERIOR DESIGN. OURS IS PERFORMANCE DRIVEN. INSTRUMENTS THAT ARE DESIGNED TO BE INSTANTLY READ. SEATS THAT HELP SUPPORT YOU IN THE TURNS. NO CUTESY STUFF HERE. SHOWN ABOVE IN DARK CHARCOAL IS OUR GT DELUXE. AND TO YOUR RIGHT IS THE OUTRAGEOUS MACH I. SPECIAL LOOK. SPECIAL INSTRUMENTATION. SPECIAL STAINLESS STEEL ACCENTS ON THE GEAR SHIFT AND CONTROL SURROUND. IT'S DIFFERENT. IT'S SPECIAL. IT'S MACH I.



1 It's all in the details. Order your Mustang V6 manual with the Interior Upgrade Package and you'll get the shift knob wrapped in leather along with an aluminum shift boot bezel.
2 Also as part of the Interior Upgrade Package with the manual transmission, stainless steel racing-inspired portal pedals await your commands.

You'll find a few holes in our interior thinking.



AUDIO

WELL, WELL, WELL. WE'VE COME TO WHERE THE MUSIC COMES ALIVE. IT'S A SHAME WE COULDN'T PRINT THESE PHOTOS ON THAT NEW "SOUND-O-MATIC" PAPER THAT'LL LET YOU HEAR EXACTLY HOW TRULY UNBELIEVABLE THESE SOUND SYSTEMS ARE JUST BY TURNING THE PAGE. SORRY. SO, YOUR BEST BET IS TO VISIT YOUR FORD DEALER AND CRANK 'EM UP TO THE 9 OR 10 POSITION. TRUST US. YOU'VE PROBABLY NEVER EXPERIENCED ANYTHING LIKE THEM.

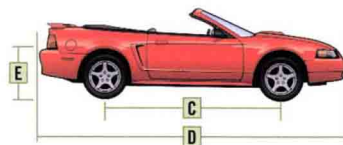
1 MACH™ 1000. It features a 60-watt amp powering four mid-range tweeters. Six 85-watt sub-woofer amps drive four interior sub-woofers. Altogether, 1140 watts of bone-jarring peak power. A pair of specially designed 10" trunk-mounted sub-woofers try to hold it all in. Good luck. Oops, almost forgot... this option comes with an in-dash 6-disc CD player with speed-sensitive volume control. It is one hellava sound system.

2 Next, we would like to point your ears in the direction of our optional MACH CD/MP3 player. The latest in car-tune technology, the MP3 player is a sound machine that can store up to 255 songs and play up to 10 hours of non-stop music all from a single CD download.

3 To your lower right is the available MACH 460 with its in-dash 6-disc CD player.



“Speak up, I can't hear you dude.”



Exterior	Coupe/Convertible
A. Overall width	73.1"
B. Height	53.1"/53.2"
C. Wheelbase	101.3"
D. Overall length	183.2"
E. Liftover height	28.2"/28.1"
Interior	
1st row	
Head room	38.1"/38.0"
Shoulder room	53.6"
Hip room	52.3"
Leg room – Automatic	42.6"
Leg room – Manual	41.9"
2nd row	
Head room	35.5"/35.8"
Shoulder room	52.1"/41.4"
Hip room	47.4"/41.0"
Leg room	29.9"
Cargo (cu. ft.)	
Trunk volume	10.9/7.7

STANDARD FEATURES

Safety/Security

- Airbags* – Driver and right-front passenger 2nd Generation
- Belt-Minder™ safety belt reminder
- Brake/shift interlock
- Bumpers – 5-mph energy-absorbing
- Door ajar alert chime
- Emergency manual trunk release – Glow-in-the-dark handle unlocks decklid from inside trunk
- Fuel pump inertia shutoff switch
- Headlamps-on alert chime
- Illuminated entry system
- Key-in-ignition alert chime
- LATCH – Rear seat child safety seat top tether anchors
- Low fuel warning light
- Remote keyless entry system – 2 key fobs with panic button and trunk release
- Safety belts – 3-point in all seating positions
- "Safety cell" unitized body construction
- SecuriLock™ – Passive anti-theft system
- Side intrusion door beams

Mechanical

- 4-wheel disc brakes
- 100,000-mile tune-up interval**
- Aluminum wheels (4)
- Battery saver
- Fuel tank – 15.7-gallon capacity
- Gas-pressurized shock absorbers – Front and rear
- Hydraulic decklid assist struts
- Lightweight composite hood with unique appearance features
- Maintenance-free battery
- Power rack-and-pinion steering
- Power-retractable convertible top (Convertible models only)
- Rear-wheel drive
- Spare – Compact
- Stabilizer bar – Front
- Stainless steel exhaust system
- Suspension – Front: independent modified MacPherson strut with separate spring on lower arm and stabilizer bar; rear: 4-bar link with coil springs on lower arm and stabilizer bar

Seating

- 2-way front head restraints
- Split-folding rear seat backs (Coupe only)

Interior

- Air conditioning
- Center console – Full-length with armrest, storage bin, tissue holder, dual cupholders and parking brake handle
- Cupholders – 2 front
- Driver's footrest
- Front door map pockets
- Glove compartment with lock
- Luggage compartment trim and carpet
- Power door locks
- Power points – 2
- Power windows – With one-touch-down driver's-side feature (also features power rear quarter windows on Convertible models)
- Remote decklid release – In glove compartment
- Storage net between visors on headliner (Coupe only)
- Tachometer
- Tilt steering wheel
- Trip odometer
- Visor vanity mirrors

Exterior

- Bodyside moldings – Color-keyed
- Bumpers – Body-colored
- Headlamps – Complex-reflector halogen
- Power outside mirrors
- Rear defroster
- Solar tinted glass
- Windshield wipers – Variable-intermittent

*Always wear your safety belt and secure children in the rear seat.
**Under normal driving conditions with regular fluid and filter changes.



COUPE



CONVERTIBLE

MODEL-SPECIFIC FEATURES/OPTIONS

	Mustang Standard Coupe	Mustang Deluxe Coupe & Convertible	Mustang Premium Coupe & Convertible
Safety/Security			
4-wheel anti-lock braking system (ABS)	Standard	Standard	Standard
Traction Control	Optional	Standard	Standard
Mechanical			
3.8L OHV 12-valve V6 engine	Standard	Standard	Standard
5-speed manual overdrive transmission* (not available on Premium Convertible)	Optional	Standard	Standard
4-speed automatic transmission with overdrive lockout (standard on Premium Convertible)	Optional	Optional	Standard
16" painted aluminum wheels (standard on Deluxe Coupe)	Optional	Standard	Standard
16" bright machined-aluminum wheels (standard on Deluxe Convertible)	Optional	Standard	Standard
16" polished aluminum wheels (Pony Package)	Optional	Optional	Optional
P225/55R16 all-season BSW tires	Standard	Standard	Standard
Spare – 16" compact	Standard	Standard	Standard
Seating			
Cloth seating surfaces	Standard	Standard	Standard
Front reclining bucket seats	Standard	Standard	Standard
Leather seating surfaces (standard on Premium Convertible)	Optional	Optional	Standard
Power driver's seat – 6-way	Optional	Standard	Standard
Interior			
AM/FM stereo with single CD player and digital clock	Standard	Standard	Standard
AM/FM stereo with single CD and MP3 player	Optional	Optional	Optional
MACH® 460 AM/FM stereo with in-dash 6-disc CD player	Optional	Optional	Optional
MACH 1000 AM/FM stereo with in-dash 6-disc CD player	Optional	Optional	Optional
Floor mats – Front	Optional	Standard	Standard
Interior Upgrade Package – Includes aluminum-finish door lock posts, grey metallic finish on center panel and shifter bezel, leather-wrapped shift knob and aluminum shift boot trim ring (manual transmission only), and stainless steel footrest/pedals	Optional	Optional	Optional
Leather-wrapped steering wheel (standard on Deluxe Convertible)	Optional	Standard	Standard
Speed control	Optional	Standard	Standard
Exterior			
Pony Package – Includes unique 16" polished aluminum wheels, unique Mustang Stampede tape stripes, unique rear fascia with Mustang in black lettering, GT hood and leather-wrapped steering wheel (not available with Sport Appearance Group)	Optional	Optional	Optional
Rear spoiler (not available on Deluxe Convertible)	Optional	Standard	Standard
Semi-hard boot (Convertible models only)	Optional	Standard	Standard
Sport Appearance Group – Includes leather-wrapped steering wheel, 16" bright machined-aluminum wheels with P225/55R16 all-season BSW tires (not available with Pony Package or Deluxe Convertible)	Optional	Optional	Optional

■ Standard ▣ Select Availability □ Optional — Not Available

	Mustang GT Deluxe Coupe & Convertible	Mustang GT Premium Coupe & Convertible	Mustang Mach 1 Coupe
Safety/Security			
4-wheel anti-lock braking system (ABS)	Standard	Standard	Standard
Traction Control	Standard	Standard	Optional
Mechanical			
4.6L SOHC 16-valve V8 engine	Standard	Standard	Optional
4.6L DOHC 32-valve V8 engine	Optional	Standard	Optional
5-speed manual overdrive transmission	Standard	Standard	Optional
4-speed automatic transmission with overdrive lockout	Optional	Optional	Optional
17" painted aluminum wheels	Standard	Standard	Optional
17" premium painted aluminum wheels with bright flange	Optional	Optional	Optional
17" 5-spoke bright aluminum wheels	Optional	Optional	Optional
17" heritage aluminum wheels	Optional	Optional	Optional
245/45ZR17 performance BSW tires	Standard	Standard	Optional
Limited-slip rear axle – 3.27:1	Standard	Standard	Optional
Limited-slip rear axle – 3.55:1	Optional	Optional	Optional
Quadra-shock rear suspension system	Standard	Standard	Optional
Spare – 16" compact	Standard	Standard	Optional
Spare – 17" compact	Optional	Optional	Optional
Stabilizer bar – Front and rear	Standard	Standard	Optional
Stainless steel dual exhaust system	Standard	Standard	Optional
Stainless steel dual exhaust system with rolled tip	Optional	Optional	Optional
Seating			
GT sport front bucket seats	Standard	Standard	Optional
Mach 1 sport front bucket seats with comfort weave leather inserts	Optional	Optional	Optional
Cloth seating surfaces	Optional	Optional	Optional
Leather seating surfaces – Coupe	Optional	Optional	Optional
Leather seating surfaces – Convertible	Optional	Optional	Optional
Power driver's seat – 6-way	Standard	Standard	Optional
Interior			
AM/FM stereo with single CD player and digital clock	Standard	Standard	Optional
AM/FM stereo with single CD and MP3 capability	Optional	Optional	Optional
MACH 460 AM/FM stereo with in-dash 6-disc CD player	Optional	Optional	Optional
MACH 1000 AM/FM stereo with in-dash 6-disc CD player	Optional	Optional	Optional
Floor mats – Front	Standard	Standard	Optional
Interior Upgrade Package – Includes aluminum-finish door lock posts, grey metallic finish on center panel and shifter bezel, leather-wrapped shift knob and aluminum shift boot trim ring (manual transmission only), and stainless steel footrest/pedals (Mach 1 keeps aluminum shift knob)	Optional	Optional	Optional
Leather-wrapped steering wheel	Standard	Standard	Optional
Semi-hard boot (Convertible models only)	Standard	Standard	Optional
Speed control	Standard	Standard	Optional
Visor vanity mirrors – Illuminated (Convertible only)	Optional	Optional	Optional
Exterior			
Fog lamps	Standard	Standard	Optional
Rear spoiler	Standard	Standard	Optional
Tape stripe – Hood and bodyside	Optional	Optional	Optional

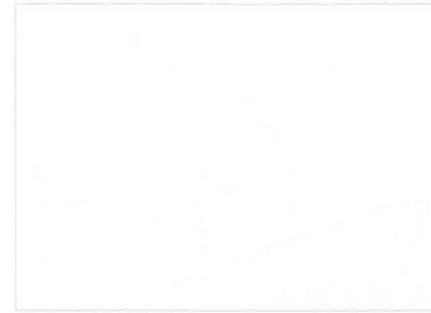
*Standard on Mustang Premium Coupe only.

Competitive comparisons based on publicly available information and Ford certification data at time of printing. Some features discussed may be optional. Vehicles shown may contain optional equipment. Features shown may be offered only in combination with other options or subject to additional ordering requirements or limitations. Following publication of the catalog, certain changes in standard equipment, options and the like, or product delays, may have occurred which would not be included in these pages. Your Ford Dealer is the best source for up-to-date information. Ford Division reserves the right to change product specifications at any time without incurring obligations.

INTERIOR/EXTERIOR COMBINATIONS

Medium Parchment		
Medium Graphite		
Dark Charcoal		
Oxford White		
■	■	Coupe
	■	Oxford White
	■	Zinc Yellow
	■	Torch Red
	■	Red Fire Metallic*
	■	Tropic Green Metallic
	■	Sonic Blue Metallic
	■	True Blue Metallic
	■	Silver Metallic*
	■	Dark Shadow Grey Metallic*
	■	Black
■	■	Convertible
	■	Oxford White
	■	Zinc Yellow
	■	Torch Red
	■	Red Fire Metallic*
	■	Tropic Green Metallic
	■	Sonic Blue Metallic
	■	True Blue Metallic
	■	Silver Metallic*
	■	Dark Shadow Grey Metallic*
	■	Black
■	■	GT
	■	Oxford White
	■	Zinc Yellow
	■	Torch Red
	■	Red Fire Metallic*
	■	Tropic Green Metallic
	■	Sonic Blue Metallic
	■	True Blue Metallic
	■	Silver Metallic*
	■	Dark Shadow Grey Metallic*
	■	Black
■	■	Mach 1
	■	Oxford White
	■	Zinc Yellow
	■	Torch Red
	■	Azure Blue*
	■	Dark Shadow Grey Metallic*
	■	Black

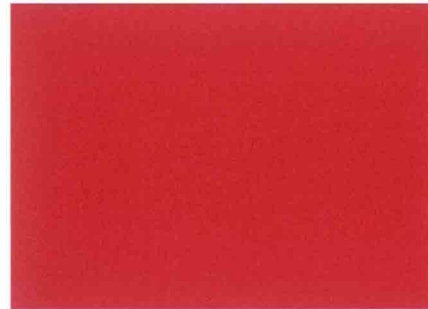
*New for 2003 (Azure Blue is unique for Mach 1).



Oxford White



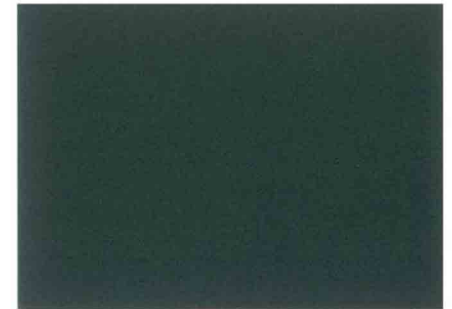
Zinc Yellow



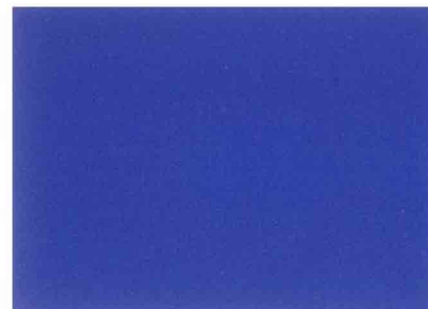
Torch Red



Red Fire Metallic



Tropic Green Metallic



Azure Blue



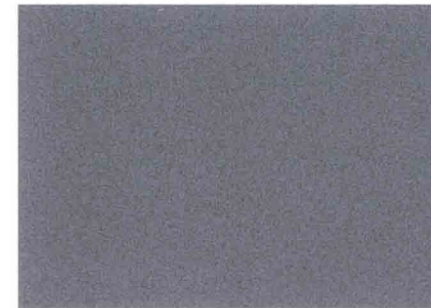
Sonic Blue Metallic



True Blue Metallic



Silver Metallic



Dark Shadow Grey Metallic



Black

Ford uses clearcoat paint for beauty and protection. Colors shown are representative only. See your dealer for actual paint/trim options.



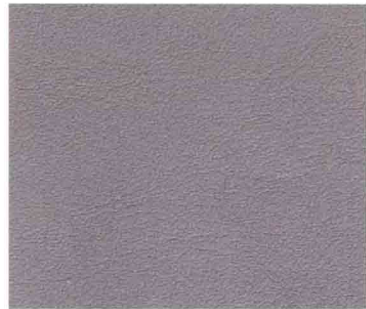
Medium Parchment Cloth



Medium Parchment Leather



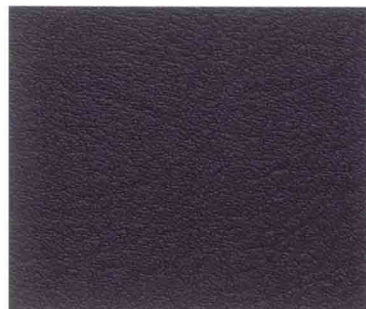
Medium Graphite Cloth



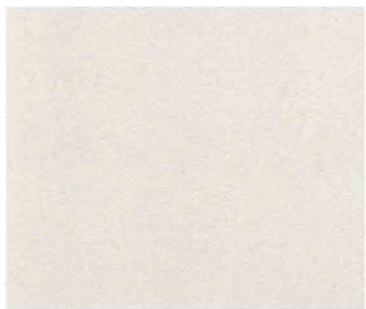
Medium Graphite Leather



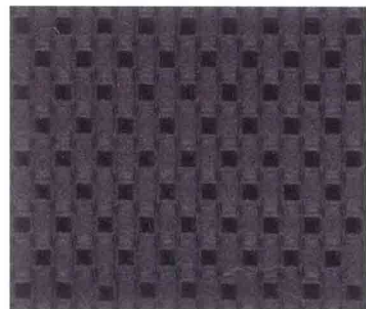
Dark Charcoal Cloth



Dark Charcoal Leather



Oxford White Leather



Midnight Black Leather
(Mach 1 only)



16" Painted Aluminum Wheel (Coupe only)
Standard on Coupe and Deluxe Coupe



16" Bright Machined-Aluminum Wheel
Standard on Deluxe Convertible and
Premium Coupe



16" Polished Aluminum Wheel
Available with Pony Package



17" Painted Aluminum Wheel
Standard on GT Deluxe



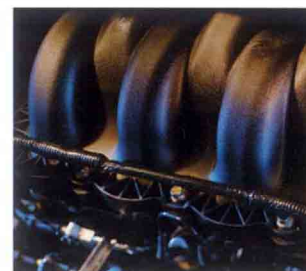
17" Premium Painted Aluminum Wheel
with Bright Flange
Standard on GT Premium



17" Bright Aluminum Wheel
Optional on GT Premium



17" Heritage Aluminum Wheel
Standard on Mach 1



3.8L OHV 12-Valve V6

Horsepower: 193 hp @ 5500 rpm
Torque: 225 lb.-ft. @ 2800 rpm



4.6L SOHC 16-Valve V8

Horsepower: 260 hp @ 5250 rpm
Torque: 302 lb.-ft. @ 4000 rpm



4.6L DOHC 32-Valve V8

Horsepower: 305 hp @ 5800 rpm
Torque: 320 lb.-ft. @ 4200 rpm



1



2



3



4



5



6



7

- 1 Start your Mustang from inside the warm confines of your home with the **remote start** option.
- 2 Available chrome **scuff plate** emblazoned with our favorite galloping pony.
- 3 Available for Mustang Convertible is the **mini-tonneau cover**. Snap it on over the rear seat for a sleek two-seater look.
- 4 Turn your trunk into "a place for everything and everything in its place" with the enclosed multi-level **cargo organizer**.
- 5 Available **race-inspired performance front seats**. Trimmed in leather with high bolsters designed to hold you better in the corners. It's the perfect thing to have... unless you plan on standing up while you're ripping through the quarter-mile.
- 6 **17" 5-spoke premium painted** beauties. Do you deserve any less?
- 7 The latest in performance apparel for your dash is this **double-brushed satin-aluminum gauge cluster surround**.



www.fordvehicles.com

Get information on any Ford vehicle, print e-brochures or take a look at financing and leasing options. Ford owners can enjoy the benefits of **My Ford**, a private, owners-only area of [fordvehicles.com](http://www.fordvehicles.com), designed to provide a single, convenient area to manage vehicle information, including maintenance, financing and web services. Our website also offers details about European Delivery, the Pre-Owned Ford program, Ford Credit and more. There's a world of information, but only one address to remember, [fordvehicles.com](http://www.fordvehicles.com).



When you purchase or lease a quality Ford vehicle, you want your ownership experience to be satisfying, pleasurable and as worry-free as possible... and so do we. That's why we created the Ford Extended Service Plan. ESP provides "Peace of Mind" protection designed to cover key vehicle components and protect you from the cost of unexpected repairs. Ask your dealer for a Ford Extended Service Plan backed by Ford Motor Company and honored at all Ford dealerships.

Ford Extended Service Plan – "Peace of Mind" Protection

- The VALUE You Want
- The SECURITY You Need
- And the CONFIDENCE You Deserve



The Mustang Life

Do you eat, dream and live the Mustang Life as much as we do? Cool. Want to be in the Mustang know before the rest of the world gets an earful? Want to know what's really going on in the fast-paced Mustang world of pony muscle? Then visit www.fordheritage.com/mustang and click on any of the links to connect with the groups that light your tires. It's your complete source for the latest news, specs, classifieds, events around the country, photos, photos and more photos. It's chock-full of the stuff that makes our heart pump around the redline. And you'll also find a list of Mustang clubs in your area. They are, of course, dedicated to keeping the Mustang spirit alive and kicking. They're people just like you who love to look at, drive and have fun just being around one of America's longest-lasting love affairs. Join in.



Ford Credit and Red Carpet Lease

Many lease managers have completed several hours of training in a Red Carpet Lease program designed to make us the best in the business. We think you'll find a Red Carpet Lease the best way to lease.

Under the New Vehicle Limited Warranty, you'll receive Bumper-to-Bumper, no-deductible coverage on your new Ford vehicle for 3 years/36,000 miles. You'll also receive unlimited-mileage, no-deductible corrosion perforation coverage for five years. Ask your Ford Dealer for a copy of this warranty.

During its 3-year/36,000-mile limited warranty period, every new Ford vehicle includes the assurance and support of a 24-hour emergency Roadside Assistance program. Roadside Assistance includes such services as fuel delivery, tire changes, jump starts, and help when you are locked out of your vehicle. Ask your Ford Dealer for complete details about this program.

Complete information on our vehicle lineup is available on our website. To get more information, please visit us at www.fordvehicles.com. Likewise, to get details on various financing options available on your new Ford vehicle, please visit www.fordcredit.com. Doing so can give you a head start before talking to your Ford Dealer about financing your new Ford vehicle.

fordvehicles.com



FORD. NO BOUNDARIES. WHEN YOU LIVE WITH SPIRIT AND PASSION, THE POSSIBILITIES OF LIFE AND ACHIEVEMENT ARE LIMITLESS. THERE ARE *NO BOUNDARIES*. EVERY PRODUCT FORD MOTOR COMPANY DESIGNS AND BUILDS IS THE DIRECT RESULT OF 100 YEARS OF THAT SPIRIT AND PASSION. IT WAS PRESENT WHEN HENRY FORD FOUNDED THE COMPANY IN 1903 AND WHEN THE FIRST AUTOMOBILE ROLLED FROM HIS WORKSHOP. TODAY, IT IS MORE ALIVE THAN EVER. THERE ARE *NO BOUNDARIES* TO OUR ENDLESS DRIVE TO TURN A NO INTO A RESOUNDING YES. TO GO BEYOND WHAT WE THOUGHT WAS POSSIBLE. TO DREAM: AND THEN CREATE CARS THAT ARE AS EMOTIONALLY FULFILLING TO OWN AS THEY ARE EXHILARATING TO DRIVE. AND THERE ARE *NO BOUNDARIES* TO OUR DEDICATION – STRIVING TO BRING YOU THE HIGHEST QUALITY, MOST EXCITING, BEST ENGINEERED, MOST RELIABLE PRODUCTS IN THE WORLD.



Ford Motor Company
100 YEARS