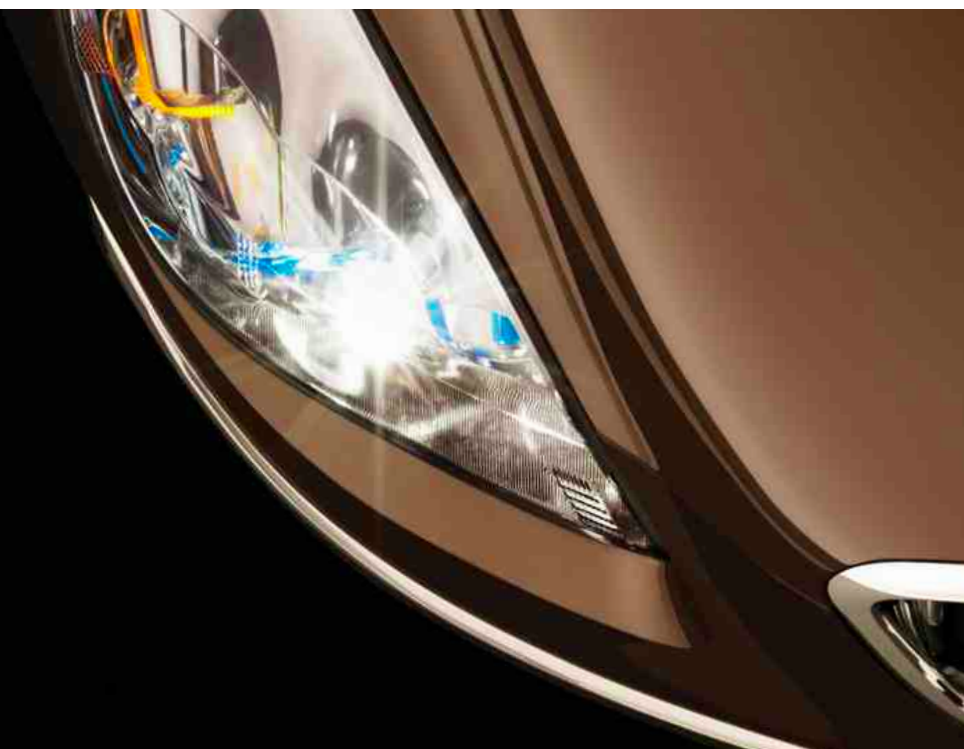


ENCLAVE

2 0 0 8





This is the all-new Enclave.[™] It is raising standards. It is raising eyebrows. It carries on the legendary qualities of Buick's past. Yet it's like no Buick[®] that has come before. It's an amazing fusion of seeming contradictions: Its cabin is pure indulgence, but can be transformed into a paradigm of practicality. It's exceedingly spacious and comfortable, but it's designed to drive with the agility and athleticism of a much smaller sedan. It delivers impressive power on the road, without inflicting punishment at the pump.* It can isolate you from the outside world, or keep you connected, informed and entertained. It's a virtuoso of curves—whether they're the ones sculpted into its sheet metal, or the ones it confidently carves through ribbons of asphalt. Enclave is the chrome-plated declaration of the way every Buick of the future will be. And it's flat-out beautiful. Now turn the page, and enter the enclave of Enclave.

*EPA estimated MPG 16 city/24 hwy (FWD); 16 city/22 hwy (AWD).



THE FIRST LUXURY CROSSLER FROM BUICK □ WATERFALL GRILLE □ FLUID LINES □ AVAILABLE ARTICULATING XENON HEADLAMPS

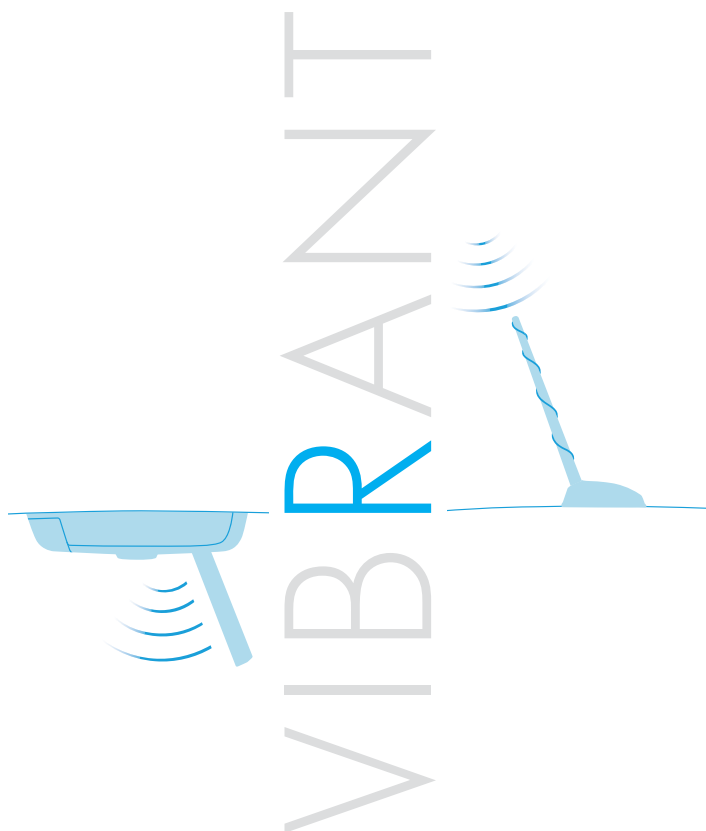


Enclave rewards the eye from virtually any perspective. The available sunroof and companion skylight provide lots of natural illumination. The skylight even comes with a power sunscreen. You can also opt for the available heated, power-folding outside rearview mirrors. Folding them in will make pulling into a tight garage or parking on the street a lot less risky. Enclave. It offers up a whole new angle on chic.



If, upon entering the cabin of Enclave, you suddenly feel like you're in the sumptuous confines of your very own private jet, Buick's interior designers will be delighted, but not surprised. That's precisely the reaction they were hoping to achieve. Curvaceous forms, luxurious materials and soft, inviting colors make it a uniquely warm, comfortable environment. Beginning with the available heated front seats, there is luxury seating for up to eight adults. In its standard seven-passenger configuration, twin captain's chairs flank an available second-row center console.* Getting to the third row does not require the skills of a contortionist. It's easy. And the seating is comfortable for three adults. Behind the third row there's nearly 19 cubic feet of space for luggage, groceries, or whatever you have to store.** Luxury. Quality. Craftsmanship. Comfort. And room to spare. Compared to ordinary SUVs, the interior of Enclave will be a vastly different experience.

*Late availability. **Cargo and load capacity limited by weight and distribution.



The interior of Enclave is a great place to watch a movie. Buick's QuietTuning® provides a hushed environment. And the available DVD Entertainment System is really something to experience. It starts with a large eight-inch LCD screen that delivers crisp details and stunning color. Rear audio controls and two wireless infrared headphones are included. This premium entertainment system is combined with the advanced Bose® ten-speaker audio system with Dolby® digital 5.1 surround capabilities. Custom-engineered specifically for the unique acoustics of the Enclave cabin, it surrounds the listeners with six separate channels: left, center, right, left surround, right surround, and one channel dedicated to deep bass—the .1 channel.

The result is an extraordinary listening experience. The music doesn't seem to come from a set of speakers, it rather seems to just fill the cabin with sound. Listeners can visualize each musical instrument and voice. The sound is so clear and detailed, people often hear musical nuances they've never heard before. And every listener gets a surround sound experience. It's like having a high-end home theatre you can take with you wherever you go.

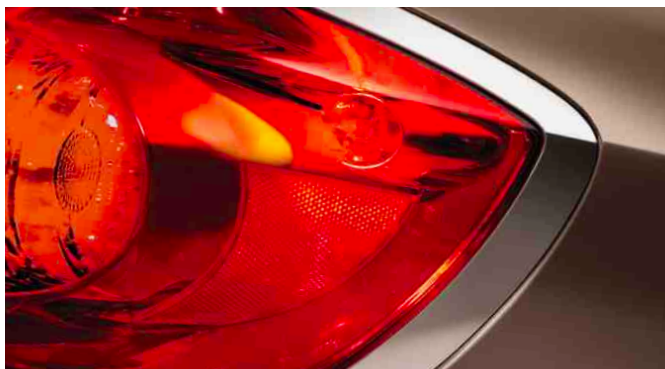
Of course, an entertainment system of this high caliber also features AM/FM stereo reception plus CD and MP3 playback. Plus, XM® Radio comes factory-installed, including three trial months of service.* With its incredible programming variety, XM has something to excite any driver: 69 channels of commercial-free music. The best sports programming, including PGA® golf coverage. News. Talk and entertainment. Instant traffic and weather. And more. Whatever your mood, XM has the perfect channel for you—coast to coast and in digital-quality sound. You'll even get unlimited access to XM Radio Online, for all the pleasures of XM when you're not in your Enclave. ((XM))

*Available in the 48 contiguous United States. Required monthly subscription sold separately. All fees and programming subject to change. For more information, visit gm.xmradio.com.



The graceful, organic design of Enclave's instrument panel is totally captivating. Sculpted arches, Warm Camphor Burl wood tones, Buick's signature lapis blue gauge lighting. Even the classic art deco design of the quartz analog clock exudes a sense of order and harmony. But behind all the beauty and craftsmanship, past the available Mahogany power tilt and telescope steering wheel, there's a wealth of high-tech intelligence ready to serve you. Like the available touch screen DVD navigation system. It has the data on almost seven million miles of U.S. and Canadian roads.* It's quite sophisticated, but simple to use. It can be voice activated. And it comes with an unobtrusive rearview camera that sends images to the navigation screen. All to help you navigate your way into those tight parking spots.

*Two annual updates are included.



VIGILANT

Buick engineers and designers have made extraordinary efforts to help Enclave drivers stay on top of the situation around them. Enclave's multi-lens tail lamp housings beautifully demonstrate the craftsmanship that goes into virtually every Enclave component. But those multiple lenses were also designed to very clearly signal the driver's intentions.

Below the tail lamps, inconspicuously tucked away in the license plate housing, is an available rearview camera. Part of the available DVD navigation system, the camera stands ready to help improve what you can see behind you as you're backing up. The image it captures is conveniently displayed on the navigation screen in the instrument panel.

When the blackness of night envelops the road, Enclave can help the driver feel much more confident. The available articulating xenon headlamps automatically turn when you turn, revealing the mysteries of the curve you're about to enter by dramatically improving visibility in bends.

When it comes to helping you know what's going on around you as you drive, Enclave's got your back. And your front.



SCULPTED ARCHES □ STABILITRAK® STABILITY CONTROL SYSTEM □ POWER REAR LIFTGATE □ AVAILABLE 19" CHROME-PLATED WHEELS



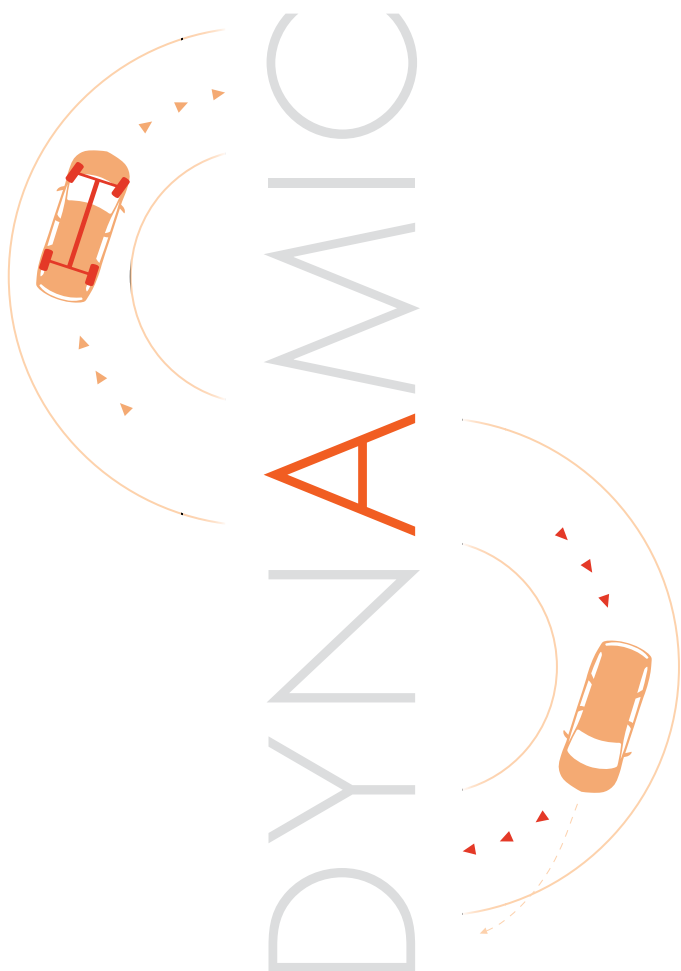
Seeing an Enclave in motion is a beautiful thing. It moves with self-assurance and athleticism. If you watch an Enclave go through a corner in the middle of the night, it might seem as if the beams of light from the headlamps are bending to illuminate the turn. It's not an illusion. That's what they're actually doing. Enclave's available articulating xenon headlamps turn when you turn. Based on vehicle speed and steering wheel angle, the headlamp on the inboard side of the corner you're driving into will turn up to 15 degrees within its clear housing—the outboard headlamp will turn up to 5 degrees. Together, they dramatically improve visibility through a curve. Now that's really something worth seeing.

No matter what time of day, if you're in the driver seat of an Enclave, you're in for a special experience. Its sophisticated 3.6L VVT V6 engine was jointly developed at GM technical centers in Germany, Sweden, Australia and North America. With dual overhead cams and variable valve timing, it produces 275 hp at 6600 rpm and 251 lb-ft torque at 3200 rpm. Which means it can deliver lots of pulling power across a wide range of engine speeds. The all-aluminum design integrates some of the most advanced technology available. This V6 was specifically selected for its impressive combination of power, quietness, smoothness, durability, low maintenance and surprising fuel economy.*

Coupled to the 3.6L VVT V6 is a sophisticated new electronically controlled six-speed automatic transmission, precisely designed for Enclave's front-wheel and all-wheel drive capabilities. It provides impressive acceleration, but changes gears so quietly and smoothly, you'll barely know it's happening. Its six forward speeds also help this high-tech transmission contribute to Enclave's impressive fuel economy.* In fact, it's so intelligent, it can sense when you're driving on a downhill grade and using your brakes so much they may begin to overheat. When it detects such a condition, it automatically downshifts into a lower gear, providing additional braking directly from the transmission—so you can ease up on the brakes and help them cool down. It's called automatic grade shift logic, and it can be a real help if you're ever towing a heavy load. Of course, you can always shift through the gears manually by using the buttons on the console shifter control.

Enclave is designed to easily handle most towing needs. All models have a towing capacity of 2,000 lbs, and can tow 4,500 lbs when equipped with the available towing package.** The 2,000-lb capacity is typically enough to tow two jet skis or snowmobiles or ATVs, a 5' x 8' utility trailer, a small fishing boat or a small pop-up camper. The 4,500-lb capacity is typically enough to tow four jet skis, snowmobiles or ATVs, a 6' x 12' utility trailer, a speedboat, runabout, bass or deckboat, a light 20' travel trailer or a 16'–18' pop-up camper.

*EPA estimated mpg 16 city/24 hwy (FWD); 16 city/22 hwy (AWD). **Maximum trailer weight ratings are calculated assuming a base vehicle, except for any options necessary to achieve the rating, plus driver. The weight of other optional equipment, passengers and cargo will reduce the maximum trailer weight your vehicle can tow. See your dealer for additional details.



Enclave's front-wheel drive configuration is a simple, elegant, efficient solution to most all-weather traction needs. But if your driving situation calls for even more traction, Buick has a very intelligent way to get it. Enclave's available **intelligent all-wheel drive system** automatically delivers power to the wheels that have the best traction. When the condition that could cause wheelspin ends, the system returns the power to the front wheels. So you get the traction performance of all-wheel drive when you need it, and the fuel economy of two-wheel drive when you don't.* Intelligent indeed.

While Enclave can carry up to eight adults comfortably and hold a lot of cargo too, it's designed to ride and handle with the smoothness, agility and athleticism of a luxury sedan. It has a four-wheel independent suspension with spring rates and stabilizer bars purposefully designed to deliver a premium ride with flat cornering. The rear suspension has a **high load-carrying capacity** for dealing with all the things Enclave can handle inside or tow behind.** Large power four-wheel anti-lock disc brakes assure confident braking. Variable-effort power rack-and-pinion steering makes parking easy and interstate speeds feel stable and predictable.

Every Enclave comes with StabiliTrak — a stability control system with the ability to sense the direction in which the driver is steering, and the power to help the driver keep Enclave on course in demanding conditions like wet, snow-covered or icy roads. It can aid the driver when sudden evasive maneuvers are required. And Enclave has a **special version of StabiliTrak** with additional control algorithms that can intervene to help mitigate the chance of a vehicle rollover.

Enclave's beautifully sculpted sheet metal helps it slip through the wind more efficiently than some sedans. Buick's aerodynamic specialists spent thousands of hours in the wind tunnel and on the computer to achieve that astonishing result. Its low center of gravity also helps it handle like a sedan. So, what's it like to drive an Enclave? Actually driving one is the only way to fully understand.

*EPA estimated mpg 16 city/24 hwy (FWD); 16 city/22 hwy (AWD).

**Cargo and load capacity limited by weight and distribution.



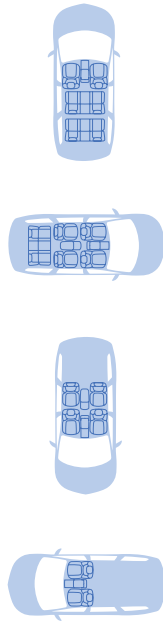
SIGNATURE PORTHOLES □ CONFIDENT STANCE □ 275 HP VVT V6 □ SIX-SPEED AUTOMATIC TRANSMISSION



Put an Enclave into motion and you'll discover how Buick brings sheer artistry to high technology. The graceful, flowing lines of the center console and its sculptured shift knob also give the driver complete command of an electronically controlled six-speed automatic transmission that's as sophisticated as it is advanced. It offers brisk acceleration, plus shifts that are so quiet and satin-smooth they could go completely unnoticed.



VERSATILE



Imagine an interior so luxurious and strikingly designed it looks like it might have come from a private jet, yet can be quickly and easily reconfigured to hold enormous amounts of stuff.* That's what it's like inside the Enclave luxury crossover.

Enclave has **first-class seating for up to eight**. The standard seven-passenger configuration features luxurious bucket seats up front, handsome captain's chairs in the second row, and a third row that's so comfortable for three adults it's more premium than the second-row seats of many SUVs. Or, if you sometimes need to carry eight adults, you can opt for an available 60/40 split-folding bench seat in the second row.

Either way, getting to the third row won't require the skills of a contortionist. A couple of Enclave features make it surprisingly easy. The rear doors open wide, and with an easy one-handed motion, the innovative Smart Slide™ second-row seats make themselves very compact, and then slide forward against the backs of the front-row seats. The result is **wide-open access to the third row**. Incredibly easy to get into, astonishingly comfortable once you're there. That's what Enclave's third-row seating is all about.

When you want to carry a lot of cargo instead of a lot of people, the second- and third-row seats fold down to create a smooth and even load floor. The available double-hinged second-row console folds flat as well. With both the second- and third-row seats folded, you'll have over **116 cubic feet of cargo space***. And the remote-controlled power rear liftgate gives you easy access to it all.

But even with all the seats up and occupied, there are two dozen storage areas in the Enclave. Like the center console that has an area deep enough to store 16-ounce water bottles. There are also up to a dozen cup holders ready for use, as well as four 12-volt power outlets and a 115-volt power inverter. There's even a driver's left foot rest specially designed to accommodate the higher heels of women's shoes. Enclave's cabin is virtually filled with versatility and innovative thinking. Imagine that.

*Cargo and load capacity limited by weight and distribution.

TIMELESS

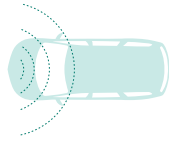


CRAFTED



No matter where you look, Enclave is a remarkable study in form and composition. On the door panels, notice how curves intersect and flow into other curves. Notice too the look of warm wood tones, brushed aluminum, rich fabrics and bright chrome accents. Premium materials joined together with quality, craftsmanship and attention to detail. That's the Enclave experience.

TRANQUIL



1.



2.



3.

From its very inception, Enclave was carefully designed to be an astonishingly peaceful sanctuary from the outside world. A custom-tailored version of the Buick-pioneered QuietTuning process was put to work. It employs dozens of different technologies and tactics in service of one or more of the following three strategies:

1. Reduce noise at its source. The most elegant way to quiet the interior of an automobile is to find the source of the noise and make it stop. Or at least reduce the volume of noise being produced. Enclave acoustic specialists found many ways to reduce noise at its source. For example, they insisted on tires with a composition and tread pattern that provide excellent traction, but which also provide an impressive level of quietness when rolling down the road. The dual exhausts were specially designed for quiet operation. The premium V6 engine and six-speed transmission were selected for their intrinsically quiet designs. And, during wind tunnel testing, Enclave's already slippery shape was fine-tuned, right down to the shape of the outside rearview mirrors, to produce minimal wind noise.

2. Block the noise path. Some noise simply can't be eliminated at its source, but much of it can be kept from finding its way into the cabin. Enclave's noise blocking tactics include the use of expanding acoustic foam injected at two dozen key structural locations. Premium triple seals on all the doors. Special laminated steel behind the instrument panel. An acoustic laminated glass windshield and laminated safety glass in both front doors.

3. Absorb noise in the cabin. Some noise still manages to sneak into the cabin. Enclave is ready. An acoustically treated headliner absorbs noise at ceiling level. Specially designed carpeting absorbs at floor level. Premium acoustic absorbers virtually surround the sides of the cabin. The standard cloth upholstery does its part. Even the available leather-appointed seating contributes to the quiet. Its perforated leather inserts not only look beautiful, but absorb sound as well.

The acoustic outcome. All this acoustic wizardry transforms the cabin into a sanctuary from the outside world. A library-quiet place where front-row passengers can converse with third-row passengers, without anyone having to raise their voice. Enclave is surely one of the very quietest luxury crossovers on the road.



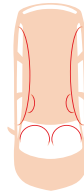
CRISP LINES □ CHROME ACCENTS □ AVAILABLE INTEGRATED ASSIST STEPS □ AVAILABLE 20" CHROME-PLATED WHEELS

TOTAL VISION GUARDED

Before



During



After

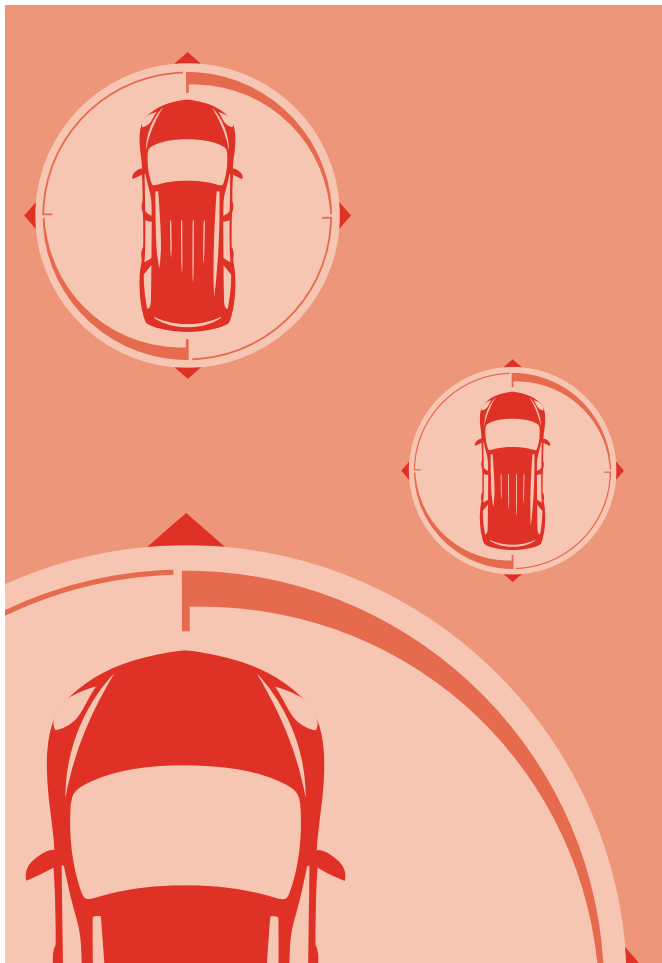


Total Vision Technology. Enclave offers an impressive array of the technology you need to help you see and be seen, with 360 degrees of confidence, as you travel down the road. Enclave's elevated seating position gives you a commanding view. The standard xenon headlamps can provide much more luminosity than ordinary tungsten lamps. The available articulating headlamps turn as you turn, to dramatically improve visibility in curves. Ultrasonic rear parking assist and a rearview camera are both available to help make backing up and parking easier. Turn signal indicators on the sideview mirrors help other drivers see your intentions. And OnStar with voice-guided Turn-by-Turn Navigation* comes standard to help make sure you never lose your way. And that's just the beginning.

Safety and protection were top priorities in the design of the Enclave. Because it's a totally-new-from-the-ground-up vehicle, the Enclave development team was able to take a totally fresh look at each aspect of protection. And they did. From every angle, and from three distinct time frames.

Every moment you're on the road, Enclave's sophisticated 360-degree perimeter safety system is on guard. Its sensors can detect an impending front, side or rear impact, and instantaneously send the appropriate commands to trigger the deployment of one or more of Enclave's complement of occupant protection systems.** And that's just one aspect of the way Enclave is designed to enhance your safety before, during and after a collision.

Before. Driving a vehicle that helps you avoid crashes is the best kind of protection. Enclave was designed to do just that. Its wide, confident stance, low center of gravity, excellent vehicle dynamics, well-designed suspension and brake systems, plus well-placed driver controls, all contribute to safety. But Enclave offers much more. Every Enclave also has traction control, anti-lock braking, the StabiliTrak electronic stability control system with rollover mitigation, and an ingenious tire pressure monitoring system. All Enclave models also feature a tilt and telescope steering wheel, high-intensity xenon headlamps, an electrochromic auto-dimming rearview mirror, and OnStar® with one-year Directions & Connections Plan that includes



OnStar voice-guided Turn-by-Turn Navigation* to help you reach your destination. Intelligent all-wheel drive is available, as is heated washer fluid, a voice-activated DVD navigation system, sideview mirrors that automatically tilt down when you shift into reverse, and articulating xenon headlamps that turn when you turn.

During. If a crash is unavoidable, Enclave's advanced safety technology will be there to help protect. The 360° perimeter safety system will deploy the appropriate air bags. Enclave has six standard air bags. Two dual-stage frontal air bags and two side-impact air bags for the driver and front passenger,** and a head-curtain side-impact air bag system† that functions like a protective curtain, unfolding from the roof rail on each side of the cabin. Activated by side-impact and rollover sensors, each head curtain spans all three seating rows to help shield and protect all outboard passengers. In rear impacts, seat restraint retractor-mounted pretensioners will help protect the driver and front-seat passenger by tightening the safety belts.

After. Enclave's amazing OnStar* features Advanced Automatic Collision Notification — which reports moderate or severe frontal, rear or side-impact crashes, whether or not air bags have deployed. So an OnStar Advisor can determine if emergency services are necessary, and relay the vehicle's location to an emergency service provider.*

*OnStar, with one-year Directions & Connections Plan, comes standard on every Buick Enclave. OnStar acts as a link to emergency service providers. Visit onstar.com for system limitations and details. Not available in all markets.

**Always use safety belts and the correct child restraints for your child's age and size. Even in vehicles equipped with a Passenger Sensing System, children are safer when properly secured in a rear seat in an appropriate infant, child or booster seat. Never place a rear-facing infant restraint in the front seat of any vehicle equipped with an active frontal air bag. See the vehicle Owner's Manual and child safety seat instructions for more safety information.

†Head-curtain side air bags are designed to help reduce the risk of head and neck injuries to front and rear seat occupants on the rear side of certain side-impact collisions.

D
N
A



The Buick Quality Advantage. From its very beginning, the Buick brand has stood for quality. It's part of our DNA. You can see that quality in the beauty of our design and the careful craftsmanship of our assembly. You can feel it in the tactile excellence of our woods, fabrics and paints.

And now you can depend on it. With the Buick Quality Advantage, you get a suite of services which no other manufacturer can match. Every 2008 Buick comes standard with America's Best Coverage: the GM 5-year/100,000-mile powertrain warranty with courtesy transportation and roadside assistance.* Plus the Buick 4-year/50,000-mile bumper-to-bumper vehicle warranty.* Plus one-year OnStar voice-guided Turn-by-Turn Navigation and OnStar Vehicle Diagnostics.** Plus QuietTuning — the Buick-pioneered process that transforms the cabin into a sanctuary from the outside world. To learn more about all the benefits of Buick ownership, visit buick.com.

Driving with confidence. That's the Buick Quality Advantage.

*Whichever comes first. See dealer for limited warranty details. **OnStar Turn-by-Turn not available in certain markets. See dealer for details. Call 1-888-466-7827 for system limitations and details.

STUNNING



Left to right: 19" machined-finish aluminum wheel, 18" painted-finish aluminum wheel, 19" chrome-plated aluminum wheel, 18" machined-finish aluminum wheel

STANDARD FEATURES

CX CXL

Powertrain

3.6L, 24-valve, DOHC V6 engine with variable valve timing	<input type="checkbox"/>	<input type="checkbox"/>
Automatic transmission, six-speed electronically controlled with automatic shift grade logic	<input type="checkbox"/>	<input type="checkbox"/>
Front-wheel drive	<input type="checkbox"/>	<input type="checkbox"/>
3.16 axle ratio	<input type="checkbox"/>	<input type="checkbox"/>

Seating

Deluxe cloth	<input type="checkbox"/>	
Leather surfaces with perforated inserts on first and second rows		<input type="checkbox"/>
Seven-passenger <input type="checkbox"/> includes folding second-row captain's chairs with reclining, fore/aft adjustments; Smart Slide™ access and third-row split-folding 60/40 bench seat	<input type="checkbox"/>	<input type="checkbox"/>
Six-way power driver and two-way power front passenger seats with manual lumbar adjustment	<input type="checkbox"/>	
Eight-way power driver and four-way power front passenger seats with four-way power lumbar adjustment		<input type="checkbox"/>
Heated driver and front passenger seats		<input type="checkbox"/>

Wheels & Tires

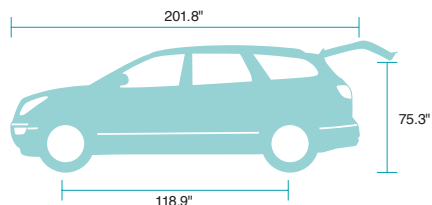
18" double-spoke painted finish aluminum, P255/65R18 all-season tires	<input type="checkbox"/>	
19" <input type="checkbox"/> teen-spoke machined finish aluminum, P255/60R19 all-season tires		<input type="checkbox"/>

Interior

Auto-dimming inside rearview mirror with eight-point compass	<input type="checkbox"/>	<input type="checkbox"/>
Leather-wrapped steering wheel with wood accents, includes audio and cruise controls	<input type="checkbox"/>	<input type="checkbox"/>
Power windows with express up and down	<input type="checkbox"/>	<input type="checkbox"/>
Programmable power door locks	<input type="checkbox"/>	<input type="checkbox"/>
Programmable remote keyless entry	<input type="checkbox"/>	<input type="checkbox"/>
QuietTuning® <input type="checkbox"/> Buick exclusive process to reduce, block and absorb noise and provide a quiet interior cabin	<input type="checkbox"/>	<input type="checkbox"/>
Remote power liftgate, includes console-mounted switch	<input type="checkbox"/>	<input type="checkbox"/>
Tilt and telescope steering wheel	<input type="checkbox"/>	<input type="checkbox"/>
Tri-zone automatic climate control	<input type="checkbox"/>	<input type="checkbox"/>
Universal Home Remote	<input type="checkbox"/>	<input type="checkbox"/>
Memory driver presets for driver seat, including easy exit feature, power mirrors and available power tilt and telescope steering wheel		<input type="checkbox"/>



67.3"



201.8"

75.3"

118.9"



67.3"

STANDARD FEATURES (continued)

CX CXL

Safety

OnStar [®] with one-year Directions & Connections Plan*	<input type="checkbox"/>	<input type="checkbox"/>
Driver and front passenger frontal dual-stage and side-impact air bags with sensor	<input type="checkbox"/>	<input type="checkbox"/>
Front-, second- and third-row head-curtain side-impact air bags with rollover protection	<input type="checkbox"/>	<input type="checkbox"/>
Lap and shoulder safety belts for all seating positions	<input type="checkbox"/>	<input type="checkbox"/>
Child seat anchors, upper and lower LATCH system for compatible child safety seats on outboard rear-passenger positions	<input type="checkbox"/>	<input type="checkbox"/>
PASS-Key [®] III theft-deterrent system	<input type="checkbox"/>	<input type="checkbox"/>
Theft-deterrent system with content alarm	<input type="checkbox"/>	<input type="checkbox"/>

Audio

AM/FM stereo, RDS display, speed-compensated volume, MP3 playback and auxiliary input jack	<input type="checkbox"/>	<input type="checkbox"/>
Single-disc CD player	<input type="checkbox"/>	<input type="checkbox"/>
XM [®] Radio <input type="checkbox"/> three-month trial at no obligation**	<input type="checkbox"/>	<input type="checkbox"/>

Exterior

Xenon high-intensity discharge headlamps with daytime running lamps and Twilight Sentinel [®]	<input type="checkbox"/>	<input type="checkbox"/>
Projector halogen fog lamps	<input type="checkbox"/>	<input type="checkbox"/>
Deep-tinted rear-side and liftgate glass	<input type="checkbox"/>	<input type="checkbox"/>
Chrome-accented roof rails and door handles	<input type="checkbox"/>	<input type="checkbox"/>
Heated manual-folding power mirrors with integrated turn indicators	<input type="checkbox"/>	<input type="checkbox"/>
Intermittent windshield wipers with rear wiper and washer	<input type="checkbox"/>	<input type="checkbox"/>

Mechanical

StabiliTrak [®] Stability Control System with rollover mitigation	<input type="checkbox"/>	<input type="checkbox"/>
Anti-lock brakes, four-wheel disc	<input type="checkbox"/>	<input type="checkbox"/>
Full-range traction control	<input type="checkbox"/>	<input type="checkbox"/>
Suspension, Premium Ride four-wheel independent	<input type="checkbox"/>	<input type="checkbox"/>
Power rack-and-pinion steering with variable assist	<input type="checkbox"/>	<input type="checkbox"/>
Tire Pressure Monitoring System	<input type="checkbox"/>	<input type="checkbox"/>
Dual stainless steel exhaust with chrome tips	<input type="checkbox"/>	<input type="checkbox"/>

SPECIFICATIONS

Engine

Type	3.6L DOHC VVT V6
Horsepower	275 @ 6,600 rpm
Torque	251 @ 3,200 rpm
EPA estimated mpg city/hwy	
front-wheel drive	16/24
all-wheel drive	16/22

Capacities

Cargo volume (cu. ft.) ¹	
behind third-row seat	18.9
behind second-row seat with third-row folded	67.5
behind first-row seats with second- and third-row folded	116.2
Fuel tank (approx. gal.)	22
Base curb weight (lbs.)	
CX	4,780
CXL	4,985
Maximum trailer weight with available Trailer Provision Package (lbs.) ²	4,500

Exterior Dimensions (inches)

Length	201.8
Width	79.0
Height	72.2
Wheelbase	118.9
Front tread	67.3
Rear tread	67.3

Interior Dimensions (inches)

	front/second/third
Legroom	41.3/36.9/33.2
Headroom	40.4/39.0/37.2
Shoulder room	62.0/61.4/57.4
Hip room	57.4/57.0/48.3

AVAILABLE FEATURES

CX CXL

Powertrain

All-wheel drive, fully automatic intelligent on-demand system	<input type="checkbox"/>	<input type="checkbox"/>
---	--------------------------	--------------------------

Seating

Eight-passenger <input type="checkbox"/> includes second-row 60/40 split-folding bench seat with reclining, fore/aft adjustments; Smart Slide access and third-row split-folding 60/40 bench seat	<input type="checkbox"/>	<input type="checkbox"/>
---	--------------------------	--------------------------

Wheels & Tires

18" double-spoke machined-finish aluminum, P255/65R18 all-season tires	<input type="checkbox"/>	
19" seven-spoke chrome-plated aluminum, P255/60R19 all-season tires		<input type="checkbox"/>

Equipment Packages

Driver Confidence		
Remote vehicle starter system, ultrasonic rear parking assist and heated washer fluid	<input type="checkbox"/>	<input type="checkbox"/>
Luxury		
Articulating headlamps, power tilt and telescope steering wheel, power folding heated mirrors with integrated turn signals and driver-side auto-dimming feature, includes 115-volt power inverter		<input type="checkbox"/>

Interior

Cargo shade and cargo net	<input type="checkbox"/>	<input type="checkbox"/>
Second-row console, includes armrest, cup holders, power outlet and storage (late availability)	<input type="checkbox"/>	<input type="checkbox"/>

Audio

Entertainment Package 1 <input type="checkbox"/> includes in-dash six-disc CD changer, Bose® ten-speaker sound system and rear audio controls	<input type="checkbox"/>	<input type="checkbox"/>
Entertainment Package 2 <input type="checkbox"/> includes CD/DVD entertainment system with eight-inch fold-down video screen, Bose 5.1 ten-speaker surround sound system, rear audio controls and two wireless headphones	<input type="checkbox"/>	<input type="checkbox"/>
Entertainment Package 3 <input type="checkbox"/> includes single-disc CD player, navigation system with rear back-up camera, Bose ten-speaker sound system, rear audio controls and two wireless headphones	<input type="checkbox"/>	<input type="checkbox"/>
Entertainment Package 4 <input type="checkbox"/> includes CD/DVD entertainment system with eight-inch fold-down video screen, navigation system with rear backup camera, Bose 5.1 ten-speaker surround sound system, rear audio controls and two wireless headphones	<input type="checkbox"/>	<input type="checkbox"/>

Exterior

Power sunroof and companion skylight with power sunshade	<input type="checkbox"/>	<input type="checkbox"/>
--	--------------------------	--------------------------

Mechanical

Trailer Provision Package <input type="checkbox"/> includes Class III hitch receiver, transmission oil cooler and seven-lead wiring harness. Does not include draw bar, hitch pin and retainer clip, hitch ball	<input type="checkbox"/>	<input type="checkbox"/>
Engine block heater	<input type="checkbox"/>	<input type="checkbox"/>

*OnStar services require vehicle electrical system (including battery), wireless service and GPS satellite signals to be available and operating for features to function properly. OnStar acts as a link to existing emergency service providers. Subscription Service Agreement required. Call 1-888-4ONSTAR (1-888-466-7827) or visit onstar.com for OnStar's Terms and Conditions, Privacy Policy and system limitations and details. For coverage map, visit onstar.com and click on OnStar Services Coverage Map.

**Available in the 48 contiguous United States. Required monthly subscription sold separately. All fees and programming subject to change. Subscription subject to customer agreement. For more information, visit gm.xmradio.com.

☐ Cargo and load capacity limited by weight and distribution. ☐ Maximum trailer weight ratings are calculated assuming a base vehicle, except for any options necessary to achieve the rating plus driver. The weight of other optional equipment, passengers and cargo will reduce the maximum trailer weight your vehicle can tow. See your dealer for additional details.



CONTOURED REAR WINDOW □ ICONIC TRI-SHIELD □ DUAL CHROME-PLATED EXHAUST TIPS □ AVAILABLE REARVIEW CAMERA

IMPORTANT WORDS ABOUT THIS BROCHURE

We have tried to make this brochure comprehensive and factual. We reserve the right, however, to make changes at any time, without notice, in prices, colors, materials, equipment, specifications, models, and availability. Specifications, dimensions, measurements, ratings and other numbers in this brochure and other printed materials provided at the dealership or affixed to vehicles are approximates based upon design and engineering drawings and prototypes and laboratory tests. Your vehicle may differ due to variations in manufacture and equipment. Since some information may have been updated since the time of printing, please check with your Buick dealer for complete details. Buick reserves the right to lengthen or shorten the model year for any product for any reason, or to start and end model years at different times.

New Vehicle Limited Warranty. This warranty is for GM vehicles registered in the USA. See your Buick dealer for terms and conditions. Covered for 4 years/50,000 miles (whichever comes first): The complete vehicle ☐ Tires ☐ Towing to your nearest Buick dealership ☐ Cosmetic corrosion resulting from defects ☐ Repairs made to correct any vehicle defect ☐ No charge for most warranty repairs Covered for 6 years/100,000 miles (whichever comes first): Rust-through corrosion

Corrosion Protection. Buick vehicles are designed and built to resist corrosion. All body and sheet metal components are warranted against rust-through corrosion for six years or 100,000 miles, whichever comes first. Application of additional rust-inhibiting materials is not required under the corrosion coverage and none is recommended. See your Buick dealer for terms of this limited warranty.

An Important Note About Alterations and Warranties. Installations or alterations to the original equipment vehicle (or chassis) as distributed by General Motors are not covered by the General Motors New Vehicle Limited Warranty. The special body company, assembler, equipment installer or upfitter is solely responsible for warranties on the body or equipment and any alterations (or any effect of the alterations) to any of the parts, components, systems or assemblies installed by GM. General Motors is not responsible for the safety or quality of design features, materials or workmanship of any alterations by such suppliers.

Assembly. Buick vehicles and their components are assembled or produced by different operating units of General Motors, its subsidiaries or suppliers to GM worldwide. We sometimes find it necessary to produce Buick vehicles with different or differently sourced components than originally scheduled. Since some options may be unavailable when your vehicle is assembled, we suggest that you verify that your vehicle includes the equipment you ordered or, if there are changes, that they are acceptable to you.

Engines. Buick products are equipped with engines produced by GM Powertrain or other suppliers to GM worldwide. The engines in Buick products may also be used in other GM makes and models.

A Note About Child Safety. Always use safety belts and the correct child restraints for your child's age and size. Even in vehicles equipped with Passenger Sensing System, children are safer when properly secured in a rear seat. Never place a rear-facing infant restraint in the front seat of any vehicle equipped with an active frontal air bag. See the vehicle Owner's Manual and child safety seat instructions for more safety information.

GM Protection Plan is the only vehicle service contract endorsed by General Motors. The GM Protection Plan offers mechanical coverage for the parts and labor costs of repairing covered vehicle components against failure ☐ even if it results from wear and tear (except in Kentucky). Depending on the level of coverage, additional benefits may include Roadside Assistance, alternate transportation or towing. The GM Protection Plan also offers basic maintenance coverage for specific maintenance needs. Ask your dealer about the GM Protection Plan or visit gmprotectionplan.com for coverage information and details.

Enhance your ownership experience. The Owner Center at MyGMLink is an online service that helps make the most of your vehicle ownership.

- ☐ Sign up for e-mail reminders about service visits
 - ☐ Keep an online history of services performed
 - ☐ Read your Owner's Manual, warranty, and more, online
 - ☐ Receive the recall notices that apply only to your vehicle
 - ☐ Watch do-it-yourself videos and much more
- Register today at MYGMLink.com!



GM, the GM Logo, Buick, the Buick Logo, OnStar, the OnStar Emblem, QuietTuning and the slogans, emblems, vehicle model names, vehicle body designs and other marks appearing in this brochure are the trademarks and/or service marks of General Motors Corporation, its subsidiaries, affiliates or licensors. The XM name and related logos are registered trademarks of XM Satellite Radio, Inc.

☐ 2007 General Motors Corporation. All rights reserved.