



All-New Tailgate Step

This class-exclusive* option is stowed right in the tailgate. Just flip up the grab bar, flip down the step, and climb up into the box.



TOUGH BREAKS NEW GROUND

F-Series Super Duty pickups are like king-size tool boxes with all the basics included, and you add the tools that work for you. For 2008, you can choose some innovative new items you won't find on any other pickup. Plus, there's a long list of rugged features that have always made Super Duty trucks work harder. American innovation provides the best tools for the job, and delivers the Super Duty that always suits your needs.

New PowerScope™ Trailer Tow Mirrors

Available exclusively on Super Duty, these optional large mirrors adjust, fold and telescope almost 3" on each side of the truck at the touch of a switch. They include heated glass, integrated turn signals and clearance lamps.



New Class-Exclusive Stowable Bed Extender

This optional 21"-tall barrier lets you haul with the tailgate down, or secure smaller loads with the tailgate up. Made of rugged fiberglass-filled polypropylene, it's corrosion resistant, and folds out of the way when not in use.



*Class is Full-size Pickups over 8500 lbs. and up to 16,000 lbs. GVWR.



FX4 Crew Cab with optional leather-trimmed captain's chairs, center console and other equipment

TOUGH LIVES LARGE

A bold, new interior design picks up where the muscular exterior leaves off. Gear rings around the air vents, and rugged panel stampings mark a hardworking, hard-hat theme. Smart storage is everywhere. A standard dash-top tray is a handy place to keep a notepad, and the available center console is deep enough to hold a laptop. The cabin is constructed from quality materials that are as comfortable as they are durable, and this giant leap in refinement pays big dividends for the driver and passengers alike.

Interior Upgrades

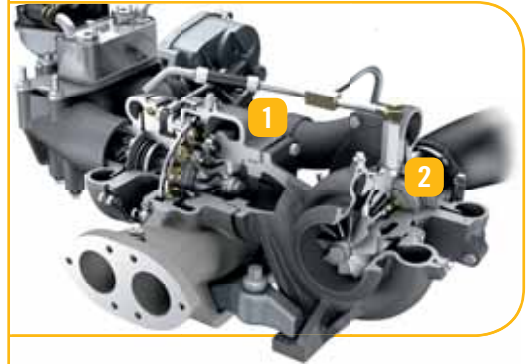
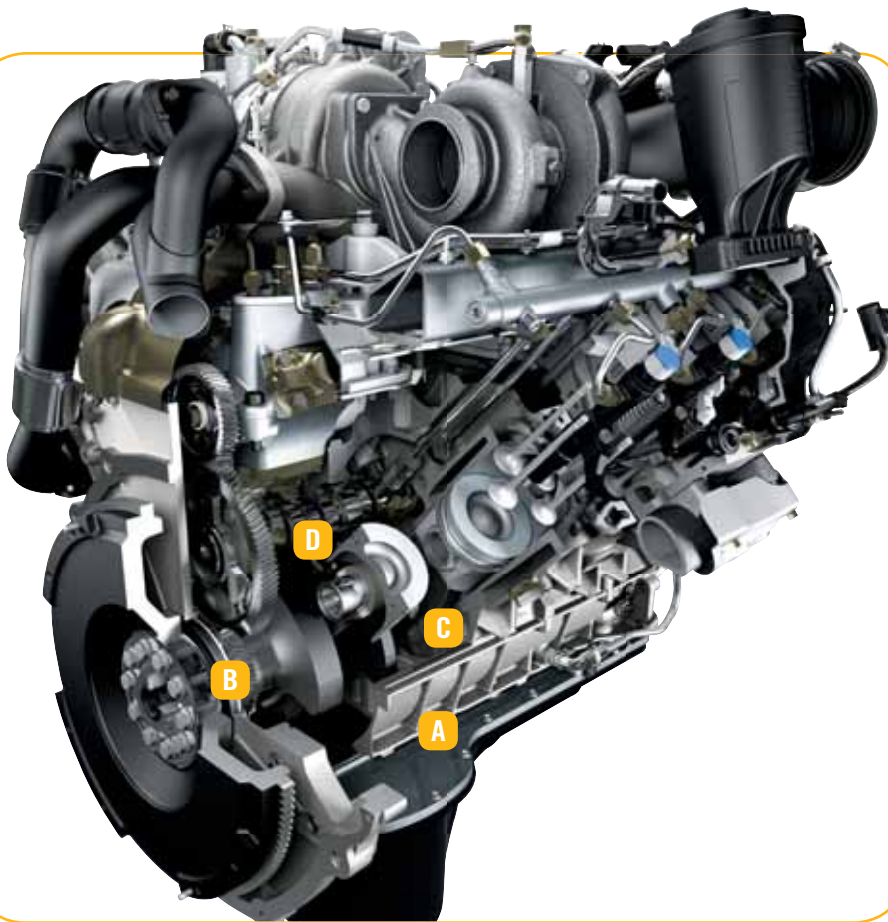
Above the large, well-organized center stack, a dash-top tray keeps frequently used items close at hand. An optional DVD-based Navigation System can map routes anywhere in the U.S. or Canada, and guide you with audible instructions. It also includes the Audiophile® Sound System with MP3 capability. A redesigned heating and air conditioning system has a more balanced airflow for quick defrosting and all-around cabin comfort. Dual-zone Electronic Automatic Temperature Control is standard on LARIAT. A new Rapid-Heat Supplemental Cab Heater is available on diesel trucks equipped with the TorqShift® transmission. It quickly and automatically helps raise the cabin temperature to a comfortable level.



New MP3 Capability and Auxiliary Input

Now, all CD audio systems are MP3-CD capable, and feature an auxiliary input jack for any compatible player.

Audiophile is a registered trademark of Audiophile, Inc.



Dual Sequential Turbos

The high-pressure Electronic Variable Response Turbo (EVRT®) **1** spools up first to provide fast transient engine response. The low-pressure turbo **2** provides added airflow at peak power and torque.

ALL-NEW 6.4L POWER STROKE® 32-VALVE V8 TURBO DIESEL

As the most powerful Ford pickup diesel engine ever, it pumps some serious iron. High-pressure common-rail fuel injection helps deliver 100% of its 650 lb.-ft. of torque (80 lb.-ft. more than 2007) at just 2000 rpm. It also optimizes fuel efficiency, cold-start capability, and helps to make this Power Stroke the quietest Ford truck diesel on the road. Here's the engine you'll want for all your heavy lifting.

350 hp @ 2000 rpm and 650 lb.-ft. of Torque @ 3500 rpm*

- High-Pressure Common-Rail Fuel Injection • Micro-Precision Piezo-Electric Injectors • Quick Starts at -20° Fahrenheit
- 10 Million Equivalent Miles of Testing

Cast-Iron Block, Heads & Bedplate

- A** This proven architecture stands up to the combustion forces of peak diesel operation, and helps dampen noise and vibration. A one-piece bedplate locks down the crankshaft, replacing traditional bearing caps.

Bigger Crankshaft

- B** Producing massive diesel horsepower and torque requires strong, precise components. Power Stroke cranks are forged from micro-alloy steel and are machined to tolerances of .005 mm.

Powder-Forged Connecting Rods

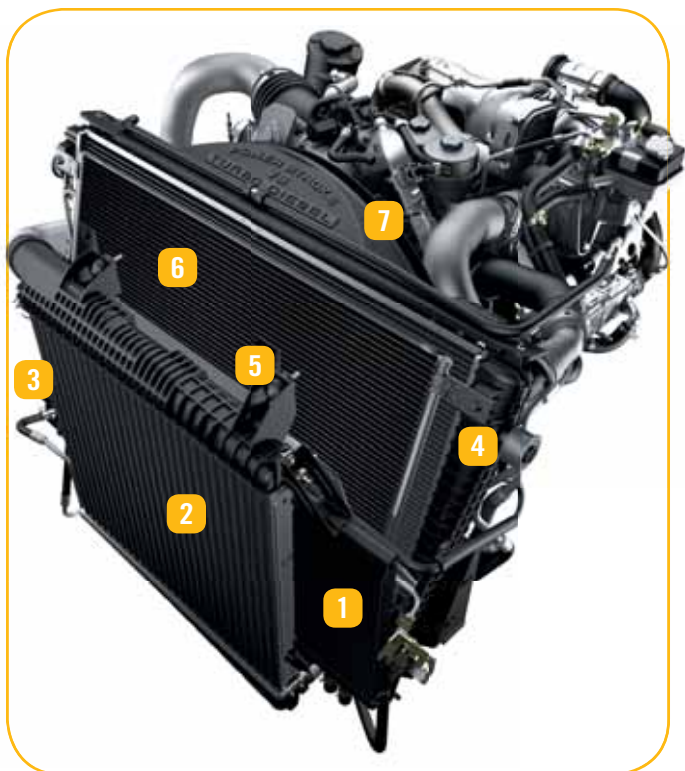
- C** This process delivers outstanding strength and dimensional accuracy for high durability and smooth performance.

Oil-Jet Piston Cooling

- D** Big power makes big heat. Special galleries spray cooling jets of oil inside the pistons. This technology optimizes ring life for long-term durability, and helps reduce combustion temperatures for improved emissions.

*Governed at 325 hp @ 3000 rpm and 600 lb.-ft. of torque @ 2000 rpm on F-450 with 6-speed manual, or on F-450 with automatic transmission and 4.88 rear axle.

2008 THE NEW F-SERIES SUPER DUTY® – F-250/F-350/F-450 PICKUPS

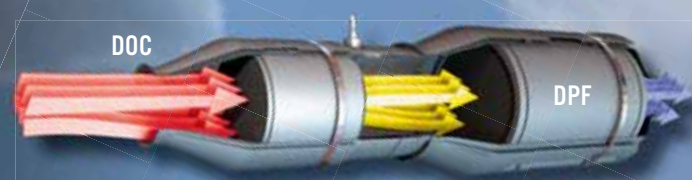


COMPREHENSIVE COOLING

- 1 Fuel Heat Exchanger
- 2 Turbocharger Intercooler
- 3 Transmission Cooler
- 4 Larger Engine Radiator
- 5 Power Steering Cooler
- 6 Air Conditioning Condenser
- 7 Engine-Mounted Shroud

This new cooling system was actually designed for the F-550 Super Duty. The engine radiator is significantly larger, and the water pump's flow rate is nearly 50% greater. There are 6 different radiators – including one for the fuel cooling system – designed to support engine emissions and enhance durability, power and torque. An engine-mounted fan shroud improves airflow efficiency, resulting in an overall cooling system that is capable and reliable, especially under extreme towing.

FORD CLEAN DIESEL TECHNOLOGY™



High-Pressure Common-Rail Fuel Injection

Fuel pressurized to 28,000 psi travels through a common rail and into state-of-the-art Piezo-electric Injectors. The system delivers multiple precision fuel injections for a smoother, cleaner burn, reduced engine clatter, superb cold-start capability and reduced emissions.

Exhaust Gas Recirculation (EGR) Designed for optimum durability, the EGR system pumps burned gases through 2 coolers to re-enter the air system at the high-torque EGR valve. These cooled gases, along with intercooled combustion air and oil-jet piston cooling, help lower combustion temperature. This helps limit the formation of nitrogen oxides (NOx).

Diesel Oxidation Catalyst (DOC) and Diesel Particulate Filter (DPF) Up front, the DOC reduces hydrocarbons in the exhaust and generates heat for the DPF. Next, the DPF traps particulates in its highly engineered silicon carbide wall-flow catalyst. The new system reduces particulate matter (soot) emissions by a factor of 10, bringing it to levels on par with a gasoline engine of similar size and power. The DOC/DPF is self-cleaning and self-diagnostic, automatically performing a regeneration/clean cycle when needed, without any driver input required.



TOUGH PUTS YOU IN COMMAND

When you're on the road towing more than any other pickup, you need more than brute strength. TowCommand arms you with sophisticated technology to offer you optimum control. For the new 2008 Super Duty, the performance of the integrated Trailer Brake Controller (TBC) has been significantly improved, enabling stronger trailer brake activation when the Anti-lock Brake System (ABS) is operating. Tied directly into the truck's 4-wheel vented-disc ABS, the TBC delivers the balanced stopping power you need, right when you ask for it. TowCommand can smooth out the biggest towing challenges, and confidence is your reward.

Complete TowCommand System

This optional factory-installed system is designed to help keep you in control of your Super Duty and trailer. TowCommand features the first fully integrated Trailer Brake Controller **A** in the class. The system incorporates ABS braking performance **B**, the TorqShift® automatic transmission with Tow/Haul Mode **C**, and telescoping trailer tow mirrors **D**. When activated, these components work together to make towing seem effortless. Now in service for its 4th model year, TowCommand is the most experienced factory-installed towing system you can get on a heavy-duty pickup.

Standard Built Ford Tough® Hitch Receivers*

12.5K-rated 2" come on F-250 and F-350 SRWs and F-350 5.4L DRW. 6.8L gas and 6.4L diesel F-350 DRWs step up to 15K-rated 2.5" F-450 carries the top 16K-rated 2.5" receiver.



Standard Trailer Tow Electrical Connector*

Includes 7-pin and 4-pin outlets with robust, hinged all-weather covers.



*Drawbar and its accessories are not included.



F-350 FX4 Crew Cab in Black

F-450 LARIAT Crew Cab 4x4 in Black

F-250 XLT SPORT Crew Cab 4x4 in Red

TOUGH CHOICES

While F-250 and F-350 cover a broad range of capabilities, F-450 Super Duty now gives you even more choice in fitting your truck to your tasks. Three hardworking model lines offer a clear separation of powers. So you can get the features you want with the capabilities you need. Nothing more, nothing less.

MAXIMUM CAPABILITIES*

F-250 16,400 lbs. 5th-Wheel Towing • 12,500 lbs. Conventional Towing • 3170 lbs. Payload • 23,000 lbs. GCWR • 10,000 lbs. GVWR • 6000 lbs. Front GAWR

F-350 18,700 lbs. 5th-Wheel Towing • 15,000 lbs. Conventional Towing • 5720 lbs. Payload • 26,000 lbs. GCWR • 13,000 lbs. GVWR • 6000 lbs. Front GAWR

F-450 24,500 lbs. New Record 5th-Wheel Towing • 16,000 lbs. New Record Conventional Towing • 6120 lbs. New Record Payload • 33,000 lbs. New Record GCWR • 14,500 lbs. New Record GVWR • 6500 lbs. New Record Front GAWR*

F-Series Super Duty Superiority*

- Best-in-Class 5th-Wheel Towing
- Best-in-Class Conventional Towing
- Best-in-Class Payload
- Best-in-Class Gas Horsepower and Torque 6.8L Triton® V10 3-Valve with SEFI
- All-New 6.4L Power Stroke® 32-Valve V8 Turbo Diesel
- New Exclusive F-450 Pickup
- New Exclusive PowerScope™ Power-Telescoping/-Folding Trailer Tow Mirrors Option
- New Exclusive Tailgate Step Option
- New Exclusive Stowable Bed Extender Option
- New Exclusive Rapid-Heat Supplemental Cab Heater Option
- New Exclusive Quiet Steel® in Dash Panel
- Exclusive Standard Box-Rail Moldings
- Exclusive Upfitter Switches Option
- Exclusive Standard Built Ford Tough® Hitch Receivers on All Models
- Winner – 2007 Truck of Texas, Texas Auto Writers Association, F-250 Super Duty Crew Cab 4x4



*When properly equipped. Class is Full-size Pickups over 8500 lbs. and up to 16,000 lbs. GVWR. See your Ford Dealer for specific equipment requirements and other limitations.

2008 THE NEW F-SERIES SUPER DUTY® – F-250/F-350/F-450 PICKUPS



XLT and XLT SPORT



F-350 XLT Crew Cab 4x4 in Dark Shadow Grey with available equipment



F-250 XLT SPORT Crew Cab 4x4 in Red with available equipment

TWICE AS TOUGH

These 2 hardworking F-Series Super Duty pickups take all the great features of the rugged XL work truck and add just the right refinements. XLT takes comfort and convenience to the next level, while XLT SPORT is all that, plus an extra helping of style.

Job Qualifications Super Duty XLT is the ultimate power tool. A hefty list of standard features includes a premium AM/FM stereo with single-CD, MP3 capability and auxiliary audio input. For added style, choose the optional cloth luxury captain's chairs with center console (inset above). A chrome grille, chrome-steel bumpers and chrome-clad steel wheels dress up the exterior (polished forged-aluminum wheels on F-450).

Mighty Fine F-Series Super Duty commands attention and respect. And if you want to drive a pickup that'll make you proud whenever you spot it in a crowd, XLT SPORT is the one. It includes all XLT standard features, plus a long list of extras that make your truck stand out. If you want to go for the max, order optional heated, leather-trimmed captain's chairs and 20" forged polished-aluminum wheels.



XLT SPORT instrument panel with available equipment



FX4 Crew Cab with Medium Stone interior with optional Black leather trim and other equipment

TOUGH DON'T NEED NO ROAD

When we say F-Series Super Duty is a go-anywhere truck, we aren't kidding. With standard 4-wheel drive, limited-slip rear differential, Rancho® branded shocks, plus transfer case and fuel tank skid plates, the new FX4 OFF-ROAD comes rigged with all the right gear for 4-wheeling. And when your adventure is done, you'll head for town in one of the most well-appointed, comfortable pickups on the road.

Relax Inside Optional leather-trimmed seating with contrasting stitching (above) looks extra sharp. You'll find it and other unique features only on FX4. There are lots of standard comforts too. Like driver and front-passenger seats with lumbar support, a tilt wheel with cruise control and a premium AM/FM stereo with single-CD, MP3 capability and auxiliary audio input. Upper and lower map pockets in the front doors provide generous storage. FX4 Crew Cab comes standard with a FlexFold™ rear seat (inset). Its many configurations and steel loadfloor set the standard for practical versatility. The FlexFold rear seat is standard on XLT and LARIAT Crew Cabs as well.



LARIAT



F-350 DRW LARIAT Crew Cab 4x4 in Black with available equipment

TOUGH REWARDS YOU

When you're able to tow and haul just about anything, just about anywhere — and you get to do it surrounded by leather-trimmed seats, power conveniences, and a premium sound system — every job is a job well done. Deserve more? Give yourself some personal space and practical storage: Optional front luxury captain's chairs have premium leather trim, and include a center console that can keep a laptop out of sight. Heated front seats are optional with the standard leather-trimmed seats as well.



Remember This Get the optional power-adjustable brake and accelerator pedals, then you can add an optional Driver Memory Package, with 2 memory settings for the driver seat, pedals and sideview mirrors. It's the ultimate in ease and comfort.



TOUGH OWNS THE RANGE

Crafted Like a Custom Saddle In Super Duty KING RANCH, you're surrounded by the finest accommodations. Chrome and woodgrain-style trim accent the spacious Crew Cab. A tilt steering wheel and a full complement of memory power accessories ensure your comfort. You and your guests sit in captain's chairs trimmed with rich Chaparral leather, which also adorns the steering wheel, center console lids and door panel armrests. A KING RANCH insignia on each seatback provides the finishing touch. The standard enhanced message center (right) can be set to English, Spanish or French.



SPECIFICATIONS

F-SERIES LINEUP & AVAILABILITY BY MODEL

XL



XL Regular Cab

F-250 SRW				
F-350 SRW				
F-350 DRW				
F-450 DRW				
○	○	○	—	Regular Cab 8' box
○	○	—	—	SuperCab 6 ³ / ₄ ' box
○	○	○	—	SuperCab 8' box
○	○	○	—	Crew Cab 6 ³ / ₄ ' box
○	○	○	○	Crew Cab 8' box
○	○	○	○	4x2
○	○	○	○	4x4



XLT



XLT SuperCab

F-250 SRW				
F-350 SRW				
F-350 DRW				
F-450 DRW				
○	○	○	—	Regular Cab 8' box
○	○	—	—	SuperCab 6 ³ / ₄ ' box
○	○	○	—	SuperCab 8' box
○	○	○	—	Crew Cab 6 ³ / ₄ ' box
○	○	○	○	Crew Cab 8' box
○	○	○	○	4x2
○	○	○	○	4x4



FX4



FX4 SuperCab

F-250 SRW				
F-350 SRW				
F-350 DRW				
F-450 DRW				
○	○	—	—	SuperCab 6 ³ / ₄ ' box
○	○	○	—	SuperCab 8' box
○	○	○	—	Crew Cab 6 ³ / ₄ ' box
○	○	○	—	Crew Cab 8' box
—	—	—	—	4x2
○	○	○	—	4x4



LARIAT



LARIAT SuperCab

F-250 SRW				
F-350 SRW				
F-350 DRW				
F-450 DRW				
○	○	—	—	SuperCab 6 ³ / ₄ ' box
○	○	○	—	SuperCab 8' box
○	○	○	—	Crew Cab 6 ³ / ₄ ' box
○	○	○	○	Crew Cab 8' box
○	○	○	○	4x2
○	○	○	○	4x4



○ Available — Not Available

Vehicles shown may include optional equipment.

SAFETY/SECURITY

4-wheel power disc brakes with Anti-lock Brake System (ABS)

MECHANICAL

INTERIOR

EXTERIOR

Bumpers — Front step and rear step

*Always wear your safety belt and always deactivate the passenger airbag when using a rear-facing child-safety seat with Regular Cab and SuperCab models. Always wear your safety belt and always secure children in the rear seat in Crew Cab models. **Under normal driving conditions with routine fluid and filter changes. †Final-stage manufacturer must supply control switches. ‡TBC verified to be compatible with electric-actuated drum brakes only.

2008 THE NEW F-SERIES SUPER DUTY® - F-250/F-350/F-450 PICKUPS

XL

XLT

FX4

ME

6.8L 3-valve SOHC Triton V10 engine (standard on F-350 DRW Crew Cab)

			SEATING
--	--	--	----------------

Front reclining seat — HD vinyl

13

				XL
				XL ^T
				FX4
				LARIAT
				EXTERIOR (continued)
—	○	○	○	Moonroof — Power-sliding (Crew Cab only) ^{††}
○	○	—	—	Pickup box delete (requires 8' box, n/a with 6.8L engine), late availability
—	○	○	●	Privacy glass (rear doors and rear window, XL ^T and FX4 require sliding rear window)
○	○	○	○	Roof clearance lamps (standard on DRW)
—	—	●	—	Skid plates — Transfer case and fuel tank
○	○	○	●	Sliding rear window — Manual
—	—	—	○	Sliding rear window — Power
○	○	○	○	Stowable bed extender (F-250/F-350 SRW only)
○	○	○	○	Tailgate Step — Includes step, Tailgate Assist and grab bar
—	○	○	○	Two-tone paint — Lower accent
—	—	●	●	Wheel-lip moldings — Dark Shadow Grey on FX4, optional accent color on LARIAT with two-tone paint (SRW only)
				PACKAGES
●	○	○	○	10,000-lb. GVWR Package (F-350 SRW)
○	○	—	○	4x4 OFF-ROAD Package — Includes transfer case and fuel tank skid plates; 4x4 OFF-ROAD box decals (requires 4x4, limited-slip rear axle and all-terrain tires)
○	○	○	○	Camper Package — Includes front springs upgrade (unless maximum springs have been computer-selected as included equipment); rear stabilizer bar (SRW); slide-in-camper certification; auxiliary rear springs
—	—	○	○	Driver Memory Package — Includes memory for trailer tow mirrors, power driver seat and power-adjustable pedals (SuperCab and Crew Cab only, requires power-adjustable pedals)
○	○	○	○	Heavy-Service Suspension Package — Includes front springs upgrade (unless maximum springs have been computer-selected as included equipment)
○	○	—	○	High-Capacity Trailer Tow Package (F-450) — Includes upgraded 4.88 limited-slip rear axle and increased GCWR to 33,000 lbs.
—	—	—	●	KING RANCH® — Includes two-tone paint with Pueblo Gold lower accent, bumpers, wheel-lip moldings and grille insert; Driver Memory Package; KING RANCH branded wheel-center caps, fender badges and floor mats; PowerScope trailer tow mirrors with body-color mirror caps; unique 18" forged painted-aluminum wheels (SRW); 17" forged-aluminum wheels (F-350 DRW); 19.5" forged-aluminum wheels (F-450); heated front seats; KING RANCH branded Chaparral leather-trimmed quad captain's chairs, and front and rear center console lids; Chaparral leather-wrapped steering wheel; and more
○	●	●	●	Power Equipment Group — Includes power door locks, sideview mirrors and front windows (plus rear on Crew Cab) with one-touch-down driver-side feature and accessory delay (requires air conditioning on XL)
—	○	○	○	Rear-Seat DVD Entertainment System — Includes roof-mounted DVD system with 8" video screen, 2 sets of wireless headphones and a remote control (n/a with power moonroof; Crew Cab only)
○	○	○	○	Snow Plow Prep Package — Computer-selected springs for snow plow application; 200-amp. alternator and unique fan clutch with diesel engine (4x4 only)
○	○	○	○	Stabilizer Package — Includes heavy-service front springs and rear stabilizer bar (available on SRW; n/a with Heavy-Service Suspension Package or Camper Package)
○	○	○	○	TowBoss Package — Includes 4.30 limited-slip rear axle, increased GCWR to 26,000 lbs. (F-350 DRW only; requires 6.4L diesel engine, automatic transmission and TowCommand System)
○	○	○	○	TowCommand System (requires TorqShift automatic transmission) — Includes TowCommand Integrated Trailer Brake Controller for electric-actuated drum brakes; manually telescoping trailer tow mirrors with manual glass (XL); manually telescoping trailer tow mirrors with power/heated glass and integrated clearance lamps and turn signals (XL ^T); PowerScope power-telescoping/folding trailer tow mirrors with power/heated glass and integrated clearance lamps and turn signals (FX4 and LARIAT)
○	—	—	—	XL Décor Group — Includes chrome bumpers; dual-beam jewel-effect headlamps; bright chrome hub covers and center ornaments (SRW only); underhood engine-compartment lamp
—	○	—	—	XL^T SPORT Package — Includes monochromatic exterior; bodyside moldings; trailer tow mirrors; privacy glass; sliding rear window; fog lamps; 5" chrome tubular step bars; chrome exhaust tip; 40/20/40 split Medium Stone two-tone cloth front seat; front and rear Black all-weather throw-in rubber floor mats; Black leather-wrapped steering wheel; Ebony carpet and interior accents; Platinum instrument panel appliqué and interior trim accents; and more (F-250 and F-350 SuperCab and Crew Cab only; requires TorqShift automatic transmission and Advanced Security Group)

● Standard ● Select Availability ○ Optional — Not Available

^{*}Included as part of Power Equipment Group on XL. ^{††}Forced on XL^T and FX4 with moonroof. [‡]Included as part of the XL Décor Group. [†]Requires Advanced Security Group on XL^T; not available with Rear-Seat DVD Entertainment System.

*Included as part of Power Equipment Group on XL. **Forced on XLT and FX4 with moonroof. †Included as part of the XL Décor Group. ‡Requires Advanced Security Group on XLT; not available with Rear-Seat DVD Entertainment System.

SPECIFICATIONS

MECHANICAL SPECIFICATIONS

FRONT SUSPENSION

Type	Twin-I-Beam (F-250/F-350 4x2); solid Twin-Coil Monobeam axle (F-250/F-350 4x4, F-450 4x2 and 4x4)
Axle (rating @ ground)	5250 lbs. (F-250/F-350 4x2); 6000 lbs. (F-250/F-350 4x4); 7000 lbs. (F-450)
Springs	Coil
Shock absorbers	1 ³ / ₈ " gas type
Stabilizer bar	Standard

REAR SUSPENSION

Type	Solid axle
Axle (rating @ ground)	6200 lbs. (F-250); 7280 lbs. (F-350 SRW); 9000 lbs. (F-350 DRW); 11,000 lbs. (F-450)
Springs	Leaf
Shock absorbers	1 ³ / ₈ " gas type
Stabilizer bar	Standard on DRW pickup; optional in package on SRW pickup

STEERING

Assist	Power
Overall ratio	20.16:1 (F-250/F-350 4x2); 20.38:1 (F-250/F-350 4x4); 17.8:1 average (F-450)

BRAKES

Type	4-wheel disc ABS (standard)
Front (rotor diameter)	13.66" (F-250/F-350); 14.53" (F-450)
Rear (rotor diameter)	13.39" (F-250/F-350); 15.35" (F-450)

WHEELS

Type	Steel (standard); chrome-clad steel or aluminum (optional)
Size	17" (standard); 18" or 20" (optional F-250/F-350 SRW); 19.5" (F-450)
Number of studs	8 (F-250/F-350); 10 (F-450)
Bolt-circle diameter	6.7" (170-mm) SRW; 7.87" (200-mm) F-350 DRW; 8.85" (225-mm) F-450

POWERTRAINS

ENGINE	4x4 TRANSFER CASE	6-SPEED MANUAL	5-SPEED AUTOMATIC
5.4L 3-Valve Triton® SEFI V8	2-speed	●	○
6.8L 3-Valve Triton SEFI V10	2-speed	●	○
6.4L Power Stroke® V8 Turbo Diesel	2-speed	●	○

● Standard ○ Optional

ENGINES

	5.4L 3-VALVE TRITON V8	6.8L 3-VALVE TRITON V10	6.4L POWER STROKE V8 TURBO DIESEL
Type	SOHC	SOHC	OHV (32-Valve)
Fuel injection	Sequential Electronic	Sequential Electronic	High-Pressure Common-Rail
Engine control system	Electronic	Electronic	Electronic
Induction system	Specially tuned	Specially tuned	Series Sequential Turbochargers, intercooler
Battery	12-volt; 650-CCA/72-amp	12-volt; 650-CCA/72-amp	Dual 12-volt; 750-CCA/78-amp
Alternator	115-amp	115-amp	135-amp (Single 200-amp or dual combined 320-amp opt.)
Cooling system	Pressurized series flow	Pressurized series flow	Pressurized series flow
Cylinders	8	10	8
Cylinder-head material	Aluminum	Aluminum	Cast iron
Block material	Cast iron	Cast iron	Cast iron
Valve operation	Hydraulic roller	Hydraulic roller	Push rod/rocker arms
Camshaft drive	Variable cam timing	Silent chain	Gear
Bore	3.55"	3.55"	3.86"
Stroke	4.16"	4.16"	4.13"
Compression ratio	9.8:1	9.2:1	16.7:1
Horsepower (hp @ rpm)	300 @ 5000	362 @ 4750	350 @ 3000*
Torque (lb.-ft. @ rpm)	365 @ 3750	457 @ 3250	650 @ 2000*
Recommended fuel	Unleaded	Unleaded	Ultra-Low-Sulfur Diesel

*Governed at 325 hp @ 3000 rpm and 600 lb.-ft. of torque @ 2000 rpm on F-450 with 6-speed manual, or on F-450 with automatic transmission and 4.88 rear axle.

WHEELS



17" Argent-Painted Steel



18" Argent-Painted Steel



17" Chrome-Clad Steel



18" Chrome-Clad Steel



18" Forged
Polished-Aluminum



18" Premium
Chrome-Clad Steel



18" Premium Forged
Polished-Aluminum



18" KING RANCH® Painted
Forged Polished-Aluminum



20" Forged
Polished-Aluminum



20" KING RANCH Premium
Painted Forged-Aluminum



17" Forged
Polished-Aluminum



17" KING RANCH Forged
Polished-Aluminum



19.5" Forged
Polished-Aluminum



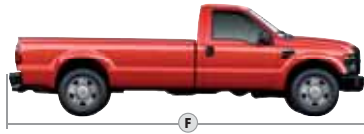
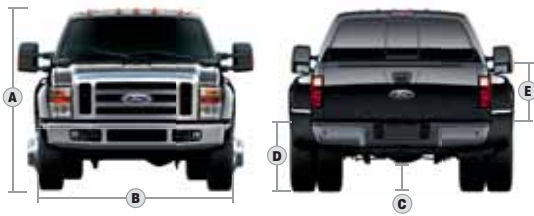
19.5" KING RANCH Forged
Polished-Aluminum



17" Argent-Painted Steel

SPECIFICATIONS

DIMENSIONS



	REGULAR CAB 4x2/4x4	SUPERCAB		CREW CAB	
	SWB 4x2/4x4	LWB 4x2/4x4	SWB 4x2/4x4	LWB 4x2/4x4	LWB 4x2/4x4
EXTERIOR					
A. Height — F-250 SRW (w/o options)	75.9"/79.2"	76.4"/79.4"	76.2"/79.4"	77.2"/79.9"	76.7"/79.9"
A. Height — F-350 SRW (w/o options)	76.0"/80.2"	76.5"/80.6"	76.3"/80.4"	77.0"/81.0"	76.8"/80.9"
A. Height — F-350 DRW (w/o options)	76.1"/79.4"	—	76.5"/79.0"	77.1"/80.2"	77.0"/80.1"
A. Height — F-450 DRW (w/o options)	—	—	—	—	79.8"
B. Overall width — SRW (excl. mirrors)	79.9"	79.9"	79.9"	79.9"	79.9"
B. Overall width — with standard mirrors	99.6"	99.6"	99.6"	99.6"	99.6"
C. Ground clearance — F-250 SRW	7.0"/7.8"	7.0"/7.8"	7.0"/7.8"	7.0"/7.8"	7.0"/7.8"
C. Ground clearance — F-350 SRW	7.1"/7.8"	7.1"/7.8"	7.1"/7.8"	7.1"/7.8"	7.1"/7.8"
C. Ground clearance — F-350 DRW	7.1"/7.5"	—	7.1"/7.5"	7.1"/7.5"	7.1"/7.5"
C. Ground clearance — F-450 DRW	—	—	—	—	7.8"
D. Loadfloor height — F-250 SRW	33.9"/34.4"	33.9"/34.5"	33.9"/34.5"	33.8"/34.5"	33.7"/34.5"
D. Loadfloor height — F-350 SRW	34.0"/37.2"	34.1"/37.3"	34.0"/37.2"	34.0"/37.3"	33.9"/37.2"
D. Loadfloor height — F-350 DRW	34.4"/35.0"	—	34.4"/35.1"	34.4"/35.1"	34.3"/35.1"
D. Loadfloor height — F-450 DRW	—	—	—	—	35.1"
E. Cargo box height	20.1"	20.1"	20.1"	20.1"	20.1"
F. Overall length	227.0"	231.8"	248.0"	246.2"	262.4"
G. Overhang — rear	52.4"	52.4"	52.4"	52.4"	52.4"
H. Wheelbase	137.0"	141.8"	158.0"	156.2"	172.4"
I. Overhang — front	37.6"	37.6"	37.6"	37.6"	37.6"
J. Angle of departure — F-250 SRW	16.4°/17.3°	16.4°/17.3°	16.2°/17.3°	16.3°/17.4°	16.2°/17.4°
J. Angle of departure — F-350 SRW	16.6°/20.3°	16.5°/20.2°	16.3°/20.2°	16.4°/20.2°	16.3°/20.2°
J. Angle of departure — F-350 DRW	17.0°/17.9°	—	16.8°/17.9°	16.8°/18.0°	16.7°/17.9°
J. Angle of departure — F-450 DRW	—	—	—	—	17.9°
K. Ramp breakover angle — F-250 SRW	13.7°/18.1°	13.1°/17.7°	11.6°/15.9°	11.8°/15.9°	10.9°/14.4°
K. Ramp breakover angle — F-350 SRW	14.3°/20.2°	13.6°/19.3°	12.0°/17.0°	12.1°/17.2°	11.0°/15.6°
K. Ramp breakover angle — F-350 DRW	13.8°/18.8°	—	13.2°/15.5°	12.1°/15.9°	11.0°/14.4°
K. Ramp breakover angle — F-450 DRW	—	—	—	—	15.2°
L. Angle of approach — F-250 SRW	21.0°/30.3°	21.1°/30.3°	21.2°/30.3°	22.4°/30.3°	21.2°/30.3°
L. Angle of approach — F-350 SRW	21.1°/29.6°	21.1°/29.7°	21.3°/29.7°	21.2°/29.7°	21.3°/29.8°
L. Angle of approach — F-350 DRW	20.9°/30.2°	—	21.0°/30.2°	21.0°/30.2°	21.1°/30.2°
L. Angle of approach — F-450 DRW	—	—	—	—	29.2°
INTERIOR					
Front					
Head room	41.4"	41.4"	41.4"	41.4"	41.4"
Shoulder room	68.0"	68.0"	68.0"	68.0"	68.0"
Hip room	67.6"	67.6"	67.6"	67.6"	67.6"
Leg room	41.0"	41.0"	41.0"	41.0"	41.0"
Rear					
Head room	—	38.4"	38.4"	41.4"	41.4"
Shoulder room	—	68.1"	68.1"	68.0"	68.0"
Hip room	—	67.3"	67.3"	67.3"	67.3"
Leg room	—	31.8"	31.8"	41.8"	41.8"

	REGULAR CAB 4x2/4x4	SUPERCAB		CREW CAB	
	SWB 4x2/4x4	LWB 4x2/4x4	SWB 4x2/4x4	LWB 4x2/4x4	LWB 4x2/4x4
CARGO BOX					
Volume (cu. ft.)	77.4	64.4	77.4	64.4	77.4
M. Width at floor (maximum)	69.3"	69.3"	69.3"	69.3"	69.3"
N. Length at floor	98.0"	81.8"	98.0"	81.8"	98.0"
O. Width at wheelhouse	50.9"	50.9"	50.9"	50.9"	50.9"

SRW = single rear wheel DRW = dual rear wheel SWB = short wheelbase (6'1" cargo box) LWB = long wheelbase (8' cargo box)

CONVENTIONAL TOWING — Maximum Loaded Trailer Weight Ratings (lbs.)

MANUAL TRANSMISSION			REGULAR CAB				SUPERCAB				CREW CAB					
ENGINE	AXLE RATIO	GCWR (LBS.)	F-250/ F-350 SRW 4x2	F-350 DRW 4x2	F-250/ F-350 SRW 4x4	F-350 DRW 4x4	F-250/ F-350 SRW 4x2	F-350 DRW 4x2	F-250/ F-350 SRW 4x4	F-350 DRW 4x4	F-250/ F-350 SRW 4x2	F-350 DRW 4x2	F-450 DRW 4x2	F-250/ F-350 SRW 4x4	F-350 DRW 4x4	F-450 DRW 4x4
5.4L 3-Valve Triton® V8	3.73	15,000	9100	—	8600	—	8800	—	8400	—	8700	—	—	8100	—	—
	4.10	17,000	11,100	—	10,600	—	10,800	—	10,400	—	10,700	—	—	10,100	—	—
		17,500	—	11,100	—	10,700	—	10,700	—	10,300	—	—	—	—	—	—
6.8L 3-Valve Triton V10	4.10	20,000	12,500	—	12,500	—	12,500	—	12,500	—	12,500	—	—	12,500	—	—
		20,500	—	14,000	—	13,500	—	13,600	—	13,100	—	13,600	—	—	13,000	—
	4.30	22,000	12,500	—	12,500	—	12,500	—	12,500	—	12,500	—	—	12,500	—	—
	22,500	—	15,000	—	15,000	—	15,000	—	15,000	—	15,000	—	—	15,000	—	—
6.4L Power Stroke® V8 Turbo Diesel	3.73	23,000	12,500	—	12,500	—	12,500	—	12,500	—	12,500	—	—	12,500	—	—
		23,500	—	15,000	—	15,000	—	15,000	—	15,000	—	15,000	—	—	15,000	—
	4.10	23,500	—	15,000	—	15,000	—	15,000	—	15,000	—	15,000	—	—	15,000	—
	4.30LS	27,000	—	—	—	—	—	—	—	—	—	—	16,000	—	—	16,000
	4.88LS	28,000	—	—	—	—	—	—	—	—	—	—	16,000	—	—	16,000

AUTOMATIC TRANSMISSION			REGULAR CAB				SUPERCAB				CREW CAB					
ENGINE	AXLE RATIO	GCWR (LBS.)	F-250/ F-350 SRW 4x2	F-350 DRW 4x2	F-250/ F-350 SRW 4x4	F-350 DRW 4x4	F-250/ F-350 SRW 4x2	F-350 DRW 4x2	F-250/ F-350 SRW 4x4	F-350 DRW 4x4	F-250/ F-350 SRW 4x2	F-350 DRW 4x2	F-450 DRW 4x2	F-250/ F-350 SRW 4x4	F-350 DRW 4x4	F-450 DRW 4x4
5.4L 3-Valve Triton V8	3.73	16,000	10,100	—	9600	—	9800	—	9400	—	9700	—	—	9100	—	—
	4.10	18,000	12,100	—	11,600	—	11,800	—	11,400	—	11,700	—	—	11,100	—	—
		18,500	—	12,100	—	11,700	—	11,700	—	11,300	—	—	—	—	—	—
6.8L 3-Valve Triton V10	4.10	21,000	12,500	—	12,500	—	12,500	—	12,500	—	12,500	—	—	12,500	—	—
		21,500	—	15,000	—	14,500	—	14,600	—	14,100	—	14,600	—	—	14,000	—
	4.30	22,500/23,000 ¹	12,500	—	12,500	—	12,500	—	12,500	—	12,500	—	—	12,500	—	—
	23,000	—	15,000	—	15,000	—	15,000	—	15,000	—	15,000	—	—	15,000	—	—
6.4L Power Stroke V8 Turbo Diesel	3.73	23,000	12,500	—	12,500	—	12,500	—	12,500	—	12,500	—	—	12,500	—	—
		23,500	—	15,000	—	15,000	—	15,000	—	15,000	—	15,000	—	—	15,000	—
	4.10	23,500	—	15,000	—	15,000	—	15,000	—	15,000	—	15,000	—	—	15,000	—
	4.30LS ²	26,000	—	15,000	—	15,000	—	15,000	—	15,000	—	15,000	—	—	15,000	—
	4.30LS	29,000	—	—	—	—	—	—	—	—	—	—	16,000	—	—	16,000
	4.88LS ³	33,000	—	—	—	—	—	—	—	—	—	—	16,000	—	—	16,000

5TH-WHEEL TOWING — Maximum Loaded Trailer Weight Ratings (lbs.)

MANUAL TRANSMISSION			REGULAR CAB				SUPERCAB				CREW CAB					
ENGINE	AXLE RATIO	GCWR (LBS.)	F-250/ F-350 SRW 4x2	F-350 DRW 4x2	F-250/ F-350 SRW 4x4	F-350 DRW 4x4	F-250/ F-350 SRW 4x2	F-350 DRW 4x2	F-250/ F-350 SRW 4x4	F-350 DRW 4x4	F-250/ F-350 SRW 4x2	F-350 DRW 4x2	F-450 DRW 4x2	F-250/ F-350 SRW 4x4	F-350 DRW 4x4	F-450 DRW 4x4
5.4L 3-Valve Triton V8	3.73	15,000	9100	—	8600	—	8800	—	8400	—	8700	—	—	8100	—	—
	4.10	17,000	11,100	—	10,600	—	10,800	—	10,400	—	10,700	—	—	10,100	—	—
6.8L 3-Valve Triton V10	4.10	17,500	—	11,100	—	10,700	—	10,700	—	10,300	—	—	—	—	—	—
		20,000	13,900	—	13,500	—	13,700	—	13,200	—	13,500	—	—	13,000	—	—
	4.30	20,500	—	14,000	—	13,500	—	13,600	—	13,100	—	13,600	—	—	13,000	—
		22,000	15,900	—	15,500	—	15,700	—	15,200	—	15,500	—	—	15,000	—	—
6.4L Power Stroke V8 Turbo Diesel	3.73	22,500	—	16,000	—	15,500	—	15,600	—	15,100	—	15,600	—	—	15,000	—
		23,000	16,100	—	15,700	—	15,900	—	15,400	—	15,700	—	—	15,200	—	—
	4.10	23,500	—	16,200	—	15,700	—	15,800	—	15,300	—	15,700	—	—	15,200	—
		27,000	—	16,200	—	15,700	—	15,800	—	15,300	—	15,700	—	—	15,200	—
	4.30LS	27,000	—	—	—	—	—	—	—	—	—	—	18,500	—	—	18,000
		4.88LS	28,000	—	—	—	—	—	—	—	—	—	—	19,500	—	—

AUTOMATIC TRANSMISSION			REGULAR CAB				SUPERCAB				CREW CAB					
ENGINE	AXLE RATIO	GCWR (LBS.)	F-250/ F-350 SRW 4x2	F-350 DRW 4x2	F-250/ F-350 SRW 4x4	F-350 DRW 4x4	F-250/ F-350 SRW 4x2	F-350 DRW 4x2	F-250/ F-350 SRW 4x4	F-350 DRW 4x4	F-250/ F-350 SRW 4x2	F-350 DRW 4x2	F-450 DRW 4x2	F-250/ F-350 SRW 4x4	F-350 DRW 4x4	F-450 DRW 4x4
5.4L 3-Valve Triton V8	3.73	16,000	10,100	—	9600	—	9800	—	9400	—	9700	—	—	9100	—	—
	4.10	18,000	12,100	—	11,600	—	11,800	—	11,400	—	11,700	—	—	11,100	—	—
6.8L 3-Valve Triton V10	4.10	18,500	—	12,100	—	11,700	—	11,700	—	11,300	—	—	—	—	—	—
		21,000	14,900	—	14,500	—	14,700	—	14,200	—	14,500	—	—	13,900	—	—
	4.30	21,500	—	15,000	—	14,500	—	14,600	—	14,100	—	14,600	—	—	14,000	—
		22,500/ 23,000 ¹	16,400/ 16,800 ¹	—	16,000/ 16,300 ¹	—	16,200/ 16,600 ¹	—	15,700/ 16,100 ¹	—	16,000/ 16,400 ¹	—	—	15,500/ 15,900 ¹	—	—
6.4L Power Stroke V8 Turbo Diesel	3.73	23,000	—	16,500	—	16,000	—	16,100	—	15,600	—	16,100	—	—	15,500	—
		23,000	16,100	—	15,700	—	15,900	—	15,400	—	15,700	—	—	15,200	—	—
	4.10	23,500	—	16,200	—	15,700	—	15,800	—	15,300	—	15,700	—	—	15,200	—
		23,500	—	16,200	—	15,700	—	15,800	—	15,300	—	15,700	—	—	15,200	—
	4.30LS ²	26,000	—	18,700	—	18,200	—	18,300	—	17,800	—	18,200	—	—	17,700	—
	4.30LS	29,000	—	—	—	—	—	—	—	—	—	—	—	—	—	—
4.88LS ³	33,000	—	—	—	—	—	—	—	—	—	—	20,500	—	—	20,000	
													24,500	—	—	24,000

Maximum capabilities shown are for properly equipped vehicles with required equipment and a 150-lb. driver. Weight of additional options, equipment, passengers and cargo must be deducted from this weight. For additional information, see your Ford Dealer.

Conventional Towing Notes: This information also applies to models with Pickup Box Delete option (66D). Trailer tongue load weight should be 10-15% of total loaded trailer weight. Make sure that the vehicle payload (reduced by option weight) will accommodate trailer tongue load weight and the weight of passengers and cargo added to the towing vehicle. The addition of trailer tongue load weight, and the weight of passengers and cargo cannot cause vehicle weights to exceed the rear GAWR (Gross Axle Weight Rating) or GVWR (Gross Vehicle Weight Rating). These ratings can be found on the vehicle Safety Compliance Certification Label. For F-250/F-350 SRW models, F-250 trailer weights are shown; F-350 trailer weights are within 200 lbs. Check with your sales consultant.

5th-Wheel Towing Notes: This information also applies to models with Pickup Box Delete option (66D). Trailer kingpin weight should be 15-25% of total loaded trailer weight. Make sure that the vehicle payload (reduced by option weight) will accommodate trailer kingpin weight and the weight of passengers and cargo added to the towing vehicle. The addition of trailer kingpin weight, and the weight of passengers and cargo cannot cause vehicle weights to exceed the rear GAWR (Gross Axle Weight Rating) or GVWR (Gross Vehicle Weight Rating). These ratings can be found on the vehicle Safety Compliance Certification Label. For F-250/F-350 SRW models, F-250 trailer weights are shown; F-350 trailer weights are within 200 lbs. Check with your sales consultant.

Conventional and 5th-Wheel Towing Footnotes: ¹Available with F-350 SRW model only. ²Available with TowBoss Package only. ³Available with High-Capacity Trailer Tow Package only.

INTERIORS

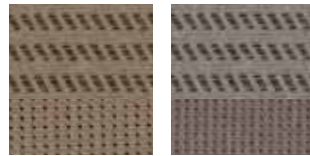
CAMEL	
MEDIUM STONE	
XL/XLT	
● ●	Oxford White
● ●	Pueblo Gold Metallic
● ●	Red
● ●	Forest Green Metallic
● ●	Dark Toreador Red Metallic
● ●	Dark Blue Pearl Metallic
● ●	Silver Metallic
● ●	Dark Shadow Grey Metallic
● ●	Dark Stone Metallic
● ●	Black
XL/XLT (DRW Crew Cab 6 ³ / ₄ ' box)	
● ●	Oxford White
● ●	Black
XLT TWO-TONE	
● ●	Oxford White/Pueblo Gold Metallic
● ●	Oxford White/Silver Metallic
● ●	Forest Green Metallic/Pueblo Gold Metallic
● ●	Forest Green Metallic/Silver Metallic
● ●	Dark Toreador Red Metallic/Pueblo Gold Metallic
● ●	Dark Toreador Red Metallic/Silver Metallic
● ●	Dark Blue Pearl Metallic/Pueblo Gold Metallic
● ●	Dark Blue Pearl Metallic/Silver Metallic
● ●	Black/Pueblo Gold Metallic
● ●	Black/Silver Metallic
XLT SPORT PACKAGE	
● ●	Oxford White
● ●	Red
● ●	Dark Blue Pearl Metallic
● ●	Dark Shadow Grey Metallic
● ●	Black
LARIAT	
● ●	Oxford White
● ●	Pueblo Gold Metallic
● ●	Red
● ●	Forest Green Metallic
● ●	Dark Toreador Red Metallic
● ●	Dark Blue Pearl Metallic
● ●	Silver Metallic
● ●	Dark Shadow Grey Metallic
● ●	Dark Stone Metallic
● ●	Black
LARIAT TWO-TONE	
● ●	Oxford White/Pueblo Gold Metallic
● ●	Oxford White/Silver Metallic
● ●	Pueblo Gold Metallic/Black
● ●	Forest Green Metallic/Pueblo Gold Metallic
● ●	Forest Green Metallic/Silver Metallic
● ●	Dark Toreador Red Metallic/Pueblo Gold Metallic
● ●	Dark Toreador Red Metallic/Silver Metallic
● ●	Dark Blue Pearl Metallic/Pueblo Gold Metallic
● ●	Dark Blue Pearl Metallic/Silver Metallic
● ●	Dark Shadow Grey Metallic/Black
● ●	Dark Stone Metallic/Pueblo Gold Metallic
● ●	Black/Pueblo Gold Metallic
● ●	Black/Silver Metallic
KING RANCH PACKAGE (Chaparral seats)	
● ●	Oxford White/Pueblo Gold Metallic
● ●	Forest Green Metallic/Pueblo Gold Metallic
● ●	Dark Blue Pearl Metallic/Pueblo Gold Metallic
● ●	Black/Pueblo Gold Metallic
● ●	Dark Copper Metallic/Pueblo Gold Metallic

MEDIUM STONE	
MEDIUM STONE WITH BLACK	
FX4* (Black seats)	
● ●	Oxford White
● ●	Red
● ●	Dark Blue Pearl Metallic
● ●	Silver Metallic
● ●	Black
FX4 TWO-TONE* (Black seats)	
● ●	Oxford White/Dark Shadow Grey Metallic
● ●	Red/Dark Shadow Grey Metallic
● ●	Dark Blue Pearl Metallic/Dark Shadow Grey Metallic
● ●	Silver Metallic/Dark Shadow Grey Metallic
● ●	Black/Dark Shadow Grey Metallic



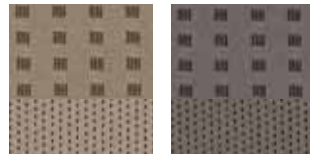
Camel Vinyl

Medium Stone Vinyl



Camel Cloth

Medium Stone Cloth



Camel Premium Cloth

Medium Stone Premium Cloth



Camel Leather

Medium Stone Leather



Medium Stone Two-Tone Cloth

Chaparral Leather (KING RANCH)



FX4 Cloth

FX4 Leather

NOTE: Fabric patterns and colors are subject to change or substitution without notice.

MAXIMUM PAYLOAD

GVWR RATINGS

F-Series Super Duty® models maintain near-maximum payload capacity even when a larger cab or engine is selected.

MAXIMUM PAYLOAD WEIGHT RATINGS (LBS.) — MODEL/WHEELBASE (WB)

	MAX. GVWR (LBS.)	REGULAR CAB	SUPERCAB		CREW CAB	
		137.0" WB	141.8" WB	158.0" WB	156.2" WB	172.4" WB
F-250 SRW 4x2	8800	3060 ¹	—	—	—	—
	9000	3130 ²	3010 ¹	—	—	—
	9200	—	3070 ²	3080 ¹	3030 ¹	—
	9400	2700 ³	—	3150 ²	3100 ²	3110 ¹
	9600	—	2650 ³	—	—	3170 ²
	9800	—	—	2730 ³	2670 ³	—
	10,000	—	—	—	—	2750 ³
F-250 SRW 4x4	9000	2800 ¹	—	—	—	—
	9200	2860 ²	2750 ¹	—	—	—
	9400	—	2810 ²	2820 ¹	2770 ¹	—
	9600	2440 ³	—	2880 ²	2830 ²	2840 ¹
	9800	—	2390 ³	—	—	2910 ²
	10,000	—	—	2460 ³	2410 ³	2280 ³
F-350 SRW 4x2	10,100	4220 ¹ /4090 ²	3970 ¹	—	—	—
	10,200	—	—	—	—	—
	10,300	—	4040 ²	—	—	—
	10,400	—	—	4150 ¹	4090 ¹	—
	10,600	—	—	4210 ²	4160 ²	4170 ¹
	10,700	3860 ³	—	—	—	—
	10,800	—	3710 ³	—	—	4230 ²
	11,000	—	—	3790 ³	3740 ³	—
	11,200	—	—	—	—	3810 ³
F-350 SRW 4x4	10,500	4160 ¹	—	—	—	—
	10,600	—	4010 ¹	—	—	—
	10,700	4220 ²	—	—	—	—
	10,800	—	4070 ²	4080 ¹	4030 ¹	—
	11,000	—	—	4140 ²	4090 ²	4100 ¹
	11,100	3800 ³	—	—	—	—
	11,200	—	3650 ³	—	—	4170 ²
	11,400	—	—	3720 ³	3670 ³	—
	11,500	—	—	—	—	3640 ³
F-350 DRW 4x2	11,800	5610 ¹	—	—	—	—
	12,000	5670 ²	—	—	—	—
	12,200	—	—	5630 ¹	—	—
	12,400	5250 ³	—	5690 ²	5640 ²	—
	12,600	—	—	—	—	5720 ²
	12,800	—	—	5270 ³	5220 ³	—
	13,000	—	—	—	—	5290 ³
F-350 DRW 4x4	12,000	5340 ¹	—	—	—	—
	12,200	5410 ²	—	—	—	—
	12,400	—	—	5370 ¹	—	—
	12,600	4980 ³	—	5430 ²	5380 ²	5250 ²
	13,000	—	—	5010 ³	4960 ³	4830 ³
F-450 DRW 4x2	14,500	—	—	—	—	6120 ³
	F-450 DRW 4x4	14,500	—	—	—	5720 ³

¹5.4L/6-speed manual. ²6.8L/6-speed manual. ³6.4L/6-speed manual.

*New for 2008.

EXTERIORS



Oxford White



Pueblo Gold Metallic*



Red



Forest Green Metallic*



Dark Toreador Red Metallic



Dark Blue Pearl Metallic*



Silver Metallic



Dark Shadow Grey Metallic



Dark Stone Metallic



Black



Dark Copper Metallic**

XLT shown with optional equipment. Ford uses clearcoat paint for beauty and protection. Colors shown are representative only. Not all colors are available on all models. See your dealer for actual paint/trim options.
*New for 2008. **KING RANCH only.

THE 5-YEAR/
60,000-MILE
POWERTRAIN
WARRANTY

New Vehicle Limited Warranty

We want your Ford Super Duty® ownership experience to be the best it can be. So under this warranty, your new vehicle comes with 3-year/36,000-mile Bumper-to-Bumper Coverage, 5-year/50,000-mile Safety Restraint Coverage, and 5-year/unlimited-mile Corrosion (Perforation) Coverage — all with no deductible. Please ask your Ford Dealer for a copy of this limited warranty.

For more assurance: There's now a 5-year/60,000-mile powertrain limited warranty that's fully transferable, with no deductible — diesel engine warranty is 5 years/100,000 miles — on select engine components. Plus, Roadside Assistance is extended to 5 years or 60,000 miles, so you have the security of knowing that help may be only a phone call away should you run out of fuel, lock yourself out of the vehicle, or need towing. Your Ford Dealer can provide complete details on all of these advantages.



Get the ride you want. Whether you plan to lease or finance, you'll find the choices that are right for you at Ford Credit. Ask your Ford Dealer for details, or check us out at www.fordcredit.com.



Genuine Ford Accessories are designed and engineered specifically for Ford vehicles. Visit our website at www.fordaccessoriesstore.com to use the Accessorizer, and to learn about complete accessory details and purchase instructions.



Get Ford Motor Company quality in your auto insurance. Our program offers industry-leading benefits and competitive rates. Call 1-877-367-3847, or visit us at www.fordvip.com for a no-obligation quote. Insurance offered by American Road Services Company (in CA, American Road Insurance Agency), a licensed agency and subsidiary of Ford Motor Company.



For a purchase or lease, the Ford **Extended Service Plan (ESP)** gives you "Peace-of-Mind" protection designed to cover key vehicle components and protect you from the cost of unexpected repairs. Ask your dealer for an ESP, the only service contract backed exclusively by Ford and honored at all Ford Lincoln Mercury dealerships.