



Drive one.

09 FLEX





Drive one.

09 FLEX



Flex Limited. Cinnamon Metallic. White Suede roof. Available equipment.

THIS IS FLEX

It's not your average ride

So get ready to experience it.

The design is simple: stacked forms in perfect proportion. Like modern architecture on wheels.

Deep grooves stream down the bodysides, seeming to move forward, even when Flex is standing still.

Up front: a gleaming chrome grille. Up top: an available color-contrasting lid.

And always surrounding it: curious stares and a barely audible "WHAT'S THAT?" as Flex cruises by.



Drive one.

09 FLEX

IT RAISES EYEBROWS and expectations

But most of all, Flex raises questions.
Here are some answers...

Actually, it's a crossover.

2 in front, up to 3 in the middle, 2 in back.

Loaded with technology like available
voice-activated communications and
entertainment.

A 3.5L V6. 6-speed auto. 24 mpg on the
highway.¹

It's got you covered. 6 airbags, including
a 3-row Safety Canopy[®] System. Even a
rollover sensor. All standard.

White Suede. Brilliant Silver. Or body-color
roof. Your choice.

¹EPA-estimated 17 mpg city/24 hwy. FWD.



Flex Limited. Cinnamon Metallic (above). Dark Ink Blue Metallic (right). White Suede roof. Available equipment.



Drive one.

09 FLEX



IT SHIFTS YOUR ATTENTION to the details

Inside here, craftsmanship abounds — from the sparkling chrome accents, to the careful stitching on the leather-wrapped shifter. Even the clock, which glows an ice blue, is carefully designed and flanked by horizontal lines like the grooves that define the outside.

Listen. Nothing... but peace.

The fact of the matter: Flex is one quiet crossover, thanks to engineers who carefully applied sound-deadening insulation, specified a 6-mm-thick windshield, and selected road noise-quieting tires.

So keep your eyes — and ears — open. There's a lot more thoughtful attention to come.

Flex Limited. Charcoal Black. Available equipment.

fordvehicles.com



Drive one.

09 FLEX



Flex SEL. Sterling Grey Metallic. White Suede roof. Available equipment.

IT TINGLES SPINES

like the electric buzz of night

It's all in how Flex moves. It hunkers down and puts a limit on lean, so it grabs the corners without the ungainliness of less lithe vehicles.

A new, fully independent rear suspension helps by soaking up bumps and potholes.

A 3.5L V6 with 262 hp and 248 lb.-ft. of torque provides enough gusto to quicken your heart rate.

It's paired with an uncommonly efficient 6-speed automatic transmission, a combo that promises one of the best EPA ratings in the class¹ — up to 24 mpg on the highway.

Change it up.

¹Large Crossover class.



Drive one.

09 FLEX



Flex SEL. Sterling Grey Metallic. White Suede roof. Available equipment.

IT TANGOS WITH THE UNPREDICTABLE without missing a step

In addition to standard front-wheel drive, Flex offers the confidence of available automatic All-Wheel Drive (AWD). This intelligent system distributes up to 100% of the available torque to the tire or tires with the most traction. After all, Flex doesn't believe in spinning its wheels.

On top of that, every Flex includes Traction Control to prevent wheel slip during acceleration, as well as this brilliant technology: Ford's AdvanceTrac® with RSC® (Roll Stability Control™).¹ It's the only system in the industry that uses 2 gyroscopic sensors to monitor both yaw and roll motions to provide side-slip control *and* roll stability control. It's always on and always working. Just follow its lead.



¹Remember that even advanced technology cannot overcome the laws of physics. It's always possible to lose control of a vehicle due to inappropriate driver input for the conditions.



Drive one.

09 FLEX



Flex Limited. Charcoal Black. Available equipment.

IT OPENS EYES

and lifts spirits

In here, you'll forget you're actually *in* at all.

An optional multi-panel Vista Roof™ welcomes the sky for all 3 rows to enjoy. Over the front seats, a sliding moonroof breathes in the fresh air. The 2nd and 3rd rows each get their own overhead windows. With panoramic views like this, Flex may soon become your personal skylight lounge. Just sit back and soak in the city.



Drive one.

09 FLEX



Flex Limited. Charcoal Black. Available equipment.

IT'S ALL ABOUT YOU

in fact, it even suits your mood

The provocative exterior of Flex and those cool grooves travel inside, creating an inviting "horizon line" that opens your view like the great outdoors. In other words, wide-open glass above; instrumentation below. Uncluttered. Crisp. Contemporary.

For a more personalized driving domain, choose available Ambient Lighting. It'll brighten the front cupholders, footwells and 2nd-row control center in any of 7 hues to match your mindset. Happy. Mellow. Or anything in between.



Drive one.

09 FLEX



IT GRANTS YOUR WISHES you talk, SYNC listens™

Step inside Flex with your compatible, paired Bluetooth®-enabled phone or plug in a portable digital media player. It'll know you've arrived. Press a button on the steering wheel, speak your mind (say, "call the office"), and it follows your commands. The magic? Ford's exclusive SYNC™ system.¹ Developed in association with Microsoft,[®] SYNC is an available voice-activated, customizable media system that lets you make calls, take calls, change up music and more — all while keeping both hands on the wheel. To connect your digital media player, just plug it into the USB port. Visit SyncMyRide.com for the latest information about exciting new features.

It brings the best in audio fidelity to your ears only

Flex is the first vehicle in North America to offer a factory-installed SONY® audio system with surround sound and SONY DSP processing.² This amazing system uses the latest Dolby® Automotive Entertainment Program technology to bring the home theater performance of Dolby Pro Logic® II into your vehicle.³ 390 watts of continuous power, 12 high-quality speakers and 2 amplifiers work together to deliver SONY's certified, unique, rich sound.

Clearly, it's like nothing you've ever heard before.

¹Driving while distracted can result in loss of vehicle control. Only use mobile phones and other devices, even with voice commands, when it is safe to do so. Microsoft is a registered trademark of Microsoft Corporation. The Bluetooth word mark is a registered trademark owned by the Bluetooth SIG, Inc. ²SONY is a registered trademark of SONY Corporation. ³Dolby and Pro Logic are registered trademarks of Dolby Laboratories.



Drive one.

09 FLEX



Gas prices, locations and details

Save money and time with Travel Link's surprising fuel price information. It includes over 120,000 stations nationwide, sorted by gas price, distance and name. It even shows you the route to the selected station.



Weather, sports, movies and more

Get a variety of local and national weather details, even radar maps and 5-day forecasts. Or tap into sports scores and upcoming schedules, plus obtain movie listings, schedules and more.



Personal photo gallery and music storage

Leave home but take what matters — family. Display your own photos on-screen, or split the screen to show shots and other info, like songs from SIRIUS Satellite Radio stations or from the 10-gig jukebox.

IT IS ROCKET SCIENCE

right from the satellite to your screen

A single glance, and suddenly you become the most informed, up-to-date person you know.

This available voice-activated Navigation System integrates direction guidance with amazing functions including SIRIUS Travel Link™¹ and a convenient Reverse Camera System. And it all displays on an intuitive, easy-to-read, 8" touch-screen monitor with bold, colorful graphics. For travel directions, just enter or say your destination. Then get on your way, without worrying about the roads. Thanks to the innovative SIRIUS Travel Link, you can access real-time traffic info, find the lowest gas prices, and even see what's playing at the local theater. And that's not all.

¹Real-time traffic monitoring available in select markets. Some features are unavailable while driving. Service not available in Alaska or Hawaii. See your Ford Dealer for details. *SIRIUS, the SIRIUS dog, "SIRIUS Travel Link" and related marks are trademarks of SIRIUS Satellite Radio Inc.

fordvehicles.com



Drive one.

09 FLEX



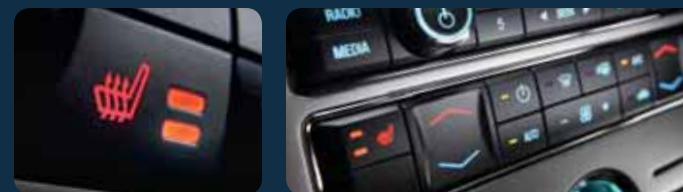
Flex Limited. Charcoal Black. Available equipment.

IT STRETCHES ALL THE RULES

not to mention your legs, arms and other body parts too

See that 2nd-row lounging room? It's enough to make a limo green with envy.

Simple truth: Flex has the most expansive 2nd-row space in its class. Relax.



Heated front seats are standard on SEL and Limited models. 2nd-row warmers are available on Limited too.

Dual-zone Electronic Automatic Temperature Control (standard on SEL and Limited) maintains 2 separate environments up front. All models give rear passengers their own auxiliary controls.



Drive one.

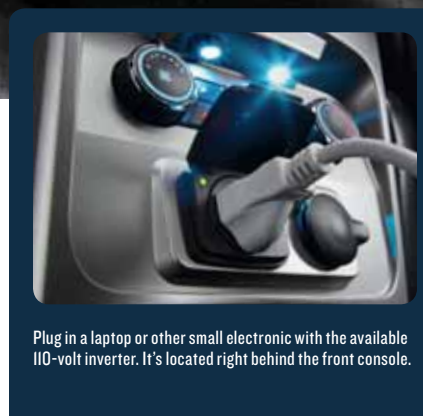
09 FLEX



IT GIVES YOU THE OPTION
to truly chill out

Pop in a beverage at room temp; pull it out later at a cool 41°. The secret is an available compressor-driven refrigerator, conveniently located in the center console between the 2nd-row bucket seats.

It not only chills; it freezes. Down to 23°. That's c-c-c-cold.



Plug in a laptop or other small electronic with the available 110-volt inverter. It's located right behind the front console.



Drive one.

09 FLEX



IT LIBERATES YOU

with power at your fingertips

No keys? No problem. Integrated into Flex's driver-side door pillar is a marvelously convenient innovation: our newest SecuriCode™ keypad. Your touch lights it up. Enter your code and the doors unlock and the interior lights turn on.

Suddenly you're free from bulky pockets.



Drive one.

09 FLEX



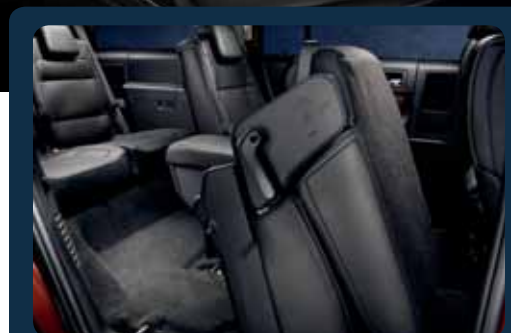
Flex Limited. Charcoal Black. Available equipment.

IT UNLIMITS YOUR OPTIONS

with comfort for up to 7

With room this large and luxurious, the challenge is finding space to describe it.

So this'll be brief. There's a comfortable 6- or 10-way power driver seat up front. In the middle, a 60/40 split bench (to seat 7). Or choose a pair of optional reclining bucket seats and available console. In the rear, a 50/50 split bench. It all fits.



Push the available power folding button, and the 2nd-row bucket seat magically flips up out of the way for instant access to the 3rd row.



Drive one.

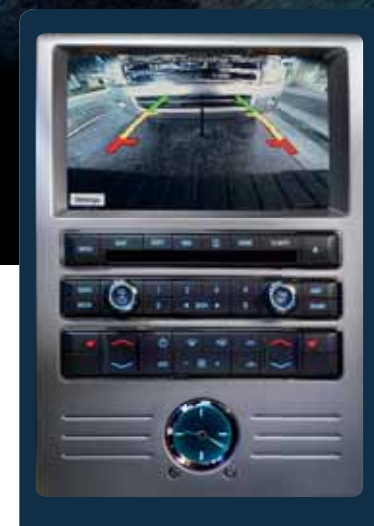
09 FLEX



IT THINKS AHEAD

even when it looks behind

When you're backing up slowly, sensors from the standard Reverse Sensing System alert you with audible signals to certain objects behind the vehicle that may not be visible, so you can avoid contact. Flex also features a Reverse Camera System as part of the available voice-activated Navigation System. It uses a tiny, state-of-the-art camera to deliver a full-color image to your 8" screen. So you can see exactly where to go. And where *not* to go.





Drive one.

09 FLEX



IT GOES ABOVE AND BEYOND

for what matters most

There's really only one way to look at safety: seriously and carefully. At Ford, we do it every day, developing systems that will help protect you and your passengers on today's always-changing, distraction-filled roads. The results of our commitment? Ford has received more 5-Star crash test ratings¹ than any other automaker in U.S. history. And that means the world to us.

¹Star ratings are part of the U.S. Department of Transportation's Safercar.gov program (www.safercar.gov).



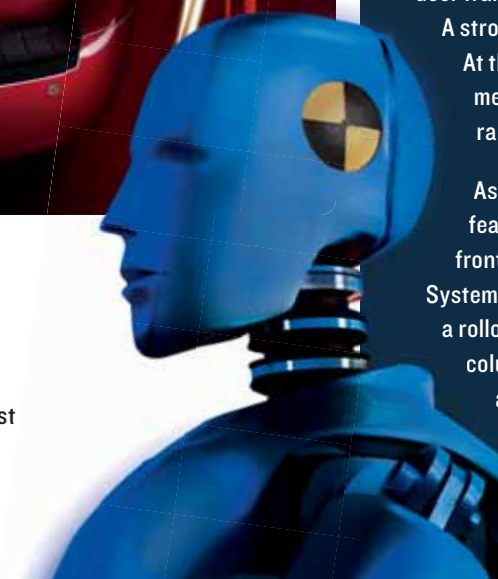
Just like your rib cage, Flex's structure is designed to protect what's inside. Thanks to extensive computer-aided engineering tools, it provides outstanding crashworthiness.

Part of this is Flex's class-exclusive SPACE (Side Protection And Cabin Enhancement) Architecture™ — an energy-absorbing design with a hydroformed cross-car beam between the door frames to strengthen each bodyside.

A strong roof crossmember adds strength.

At the front, an energy-absorbing structural member, front bumper plate, and tunnel rails assist in front impacts.

As you'd expect, all of this is in addition to features like 6 airbags, including dual-stage front, front-seat side, and the Safety Canopy® System featuring 3-row side-curtain airbags and a rollover sensor, plus a collapsible steering column, Tire Pressure Monitoring System and more. All standard equipment on every Flex model.



fordvehicles.com



Drive one.

IT'S DECISION TIME

but take your time



Dark Ink Blue Metallic



Brilliant Silver Metallic



Black



Cinnamon Metallic



Sterling Grey Metallic



Redfire Metallic



White Suede



Light Ice Blue Metallic



White Platinum Tri-Coat Metallic
(not available on SE,
extra-cost option)



Redfire Metallic with
White Suede roof



Brilliant Silver Metallic
with White Suede roof



Light Ice Blue Metallic
with White Suede roof



White Suede with
Brilliant Silver
Metallic roof



Dark Ink Blue Metallic with
White Suede roof



Sterling Grey Metallic with
White Suede roof



Black with
Brilliant Silver Metallic roof



Cinnamon Metallic with
White Suede roof

- A. Medium Light Stone Cloth — SE
- B. Charcoal Black Cloth — SE
- C. Medium Light Stone Leather Trim — SEL
- D. Charcoal Black Leather Trim — SEL
- E. Medium Light Stone Perforated Leather Trim — Limited
- F. Charcoal Black Perforated Leather Trim — Limited





Drive one.

09 FLEX

Dimensions & Ratings

EXTERIOR (in.)

Length	201.8
Wheelbase	117.9
Width — excluding mirrors	75.9
including mirrors	88.8
mirrors folded	80.1
Height — excluding options	68.0
including options	69.3

INTERIOR (in.)

1st Row	
Head room	41.8
Shoulder room	58.4
Hip room	55.5
Leg room	40.8
2nd Row	
Head room	40.5
Shoulder room	58.1
Hip room	55.0
Leg room	44.3
3rd Row	
Head room	38.7
Shoulder room	50.8
Hip room	41.1
Leg room	33.3

CARGO VOLUME (cu. ft.)

Behind 1st row	83.2
Behind 2nd row	43.2
Behind 3rd row	20.0 ¹

ENGINE

3.5L Duratec V6

Horsepower (hp @ rpm)	262 @ 6250
Torque (lb.-ft. @ rpm)	248 @ 4500

2009 EPA-ESTIMATED FUEL ECONOMY (mpg)

FWD	17 city / 24 hwy.
AWD	16 city / 22 hwy.
Fuel tank capacity	18.6 gal.

2009 Flex Standard Features

MECHANICAL

- 3.5L Duratec V6 with 6-speed automatic transmission
- 4-wheel disc Anti-lock Brake System (ABS)
- AdvanceTrac® with RSC® (Roll Stability Control™) — Includes Traction Control
- Easy Fuel™ capless fuel-filler system

SAFETY AND SECURITY

- Personal Safety System® for driver and front passenger — Includes dual-stage front airbags², safety belt pretensioners, safety belt energy-management retractors, safety belt usage sensors, driver-seat position sensor, crash severity sensor, restraint control module and Front-Passenger Sensing System
- Adjustable head restraints
- Belt-Minder® front safety belt reminder
- Child-safety rear door locks
- Front-seat side airbags²
- LATCH — Lower anchors and tether anchors for child-safety seats
- Perimeter alarm
- Safety Canopy® System with side-curtain airbags² and rollover sensor
- SecuriLock® passive anti-theft ignition system
- Tire Pressure Monitoring System (excludes spare)

EXTERIOR

- Autolamp — Automatic headlamps with wiper-activated headlamp feature
- Fog lamps
- Integrated keyhead transmitter remotes (2)
- Power sideview mirrors
- Privacy glass on 2nd- and 3rd-row windows and liftgate
- Rear-window defroster
- Reverse Sensing System
- SecuriCode™ next-generation keypad
- Spare tire — Mini
- Windshield wipers — Intermittent front (speed-sensitive) and 2-speed rear

SEATING

- 6-way power driver seat with 2-way manual front-passenger seat
- 7-passenger seating
- 1st-row bucket seats with fold-flat front-passenger seat
- 2nd-row 60/40 split bench, fold-flat
- 3rd-row 50/50 split bench, fold-in-floor

INTERIOR

- 1st-row center console with armrest, storage, 2 cupholders, and rear pull-out drawer with 2 cupholders and storage for 2nd-row passenger use
- Accessory delay
- Air conditioning
- Auto-dimming rearview mirror
- Autolock — Power door locks
- Auxiliary audio input jack
- Auxiliary rear climate control
- Carpeted floor mats in 1st and 2nd rows
- Cupholders/bottle holders (10)
- Driver and front-passenger sun visors with illuminated vanity mirrors
- Grab handles — 1st and 2nd rows, retractable
- Leather-wrapped shifter
- Map pockets — 1st-row seatbacks
- Message center with trip computer
- Overhead console with map lights and sunglasses holder
- Power points — 12V (4)
- Power windows with one-touch-up/-down driver-window feature
- Reading lamps for 2nd- and 3rd-row passengers
- Steering wheel with cruise and secondary audio controls
- Tilt-adjustable steering column



Rear cargo storage well (behind 3rd row)



Available HID headlamps

¹Includes 5.0-cu.-ft. rear cargo storage well.

²Always wear your safety belt and secure children in the rear seat.



Drive one.

09 FLEX

CUSTOMIZE YOUR FLEX IN 3 STEPS

1

Choose your trim level

Each series includes the standard equipment of the previous series, except when additions/exceptions are noted.

FLEX SE

- 18" painted-aluminum wheels with P235/60R18 BSW tires
- Autolamp — Automatic headlamps with wiper-activated headlamp feature
- Fog lamps with body-color bezels
- Black, power, manually folding sideview mirrors
- Body-color door handles
- Bright polished stainless steel exhaust tips
- Air conditioning
- AM/FM stereo/single-CD player with MP3 capability and 6 speakers
- Outside temperature and compass displays
- Color-keyed leather-wrapped steering wheel with cruise and secondary audio controls
- 1st-row cloth bucket seats with 6-way power driver seat and driver manual lumbar
- 2nd-row cloth 60/40 split bench seat with folding seatbacks
- 3rd-row cloth fold-in-floor 50/50 split bench seat

FLEX SEL

- 18" machined-aluminum wheels with P235/60R18 BSW tires
- Fog lamps with chrome bezels
- Body-color, power, heated, manually folding sideview mirrors
- Chrome door handles
- Dual-zone Electronic Automatic Temperature Control
- SONY® AM/FM stereo/6-disc in-dash CD changer with MP3 capability, 12 speakers and SIRIUS Satellite Radio with 6-month subscription
- 1st-row leather-trimmed heated bucket seats, including 10-way power driver seat with manual lumbar and 6-way power passenger seat
- 2nd-row leather-trimmed 60/40 split bench seat with folding seatbacks
- 3rd-row vinyl fold-in-floor 50/50 split bench seat
- Universal Garage Door Opener
- Cargo net

FLEX LIMITED

- 19" polished-aluminum wheels with P235/55R19 BSW tires
- Autolamp with HID headlamps
- Chrome, power, heated, manually folding sideview mirrors with integrated security approach lamps and memory
- Power liftgate
- Satin-aluminum liftgate appliqué
- LED taillamps
- Ford SYNC™ voice-activated, in-vehicle communications and entertainment system
- Color-keyed leather-wrapped steering wheel with wood inlay and cruise and secondary audio controls
- 1st-row perforated, leather-trimmed heated bucket seats, including 10-way power driver seat with memory and manual lumbar, and 6-way power passenger seat
- 2nd-row perforated, leather-trimmed 60/40 split bench seat with folding seatbacks
- Power-adjustable pedals with memory
- Ambient Lighting
- 110-volt inverter with AC outlet
- 2nd-row removable footrests

Continue building your Flex on the next page.



Available power, heated sideview mirrors



Available power liftgate



Reverse Sensing System



Fold-flat front-passenger seat



Easy Fuel™ capless fuel-filler system



Available Trailer Tow Package with a Class III hitch receiver



Drive one.

09 FLEX

2 Choose your options

- All-Wheel Drive (AWD) — Available on SEL and Limited
- 17" aluminum wheels with P235/60R17 BSW tires — Available on SE; snow states only
- 20" bright painted-aluminum wheels with P255/45R20 all-season BSW tires (not available with Class III Trailer Tow Package) — Available Fall 2008 on SEL and Limited
- Black roof-rack side rails — Available on SE
- Chrome roof-rack side rails (not available with Vista Roof™) — Available on SEL and Limited
- Two-tone roof — Available on SEL and Limited
- Multi-panel Vista Roof (not available with roof-rack side rails) — Available on SEL and Limited
- AM/FM stereo/6-disc in-dash CD changer with MP3 capability, 6 speakers and SIRIUS Satellite Radio with 6-month subscription — Available on SE
- Ford SYNC™ voice-activated, in-vehicle communications and entertainment system — Available on SE and SEL; standard on Limited
- Voice-activated Navigation System¹ with Reverse Camera System, SIRIUS Travel Link™ services with 6-month subscription, and analog clock — Available on Limited; available Fall 2008 on SEL
- All-weather floor mats in 1st and 2nd rows — Available on SE, SEL and Limited
- 2nd-row floor console — Available on SEL and Limited
- Rear Console Refrigeration (requires 2nd-row floor console) — Available on SEL and Limited
- Family DVD Entertainment System with headliner-mounted monitor — Available on SEL and Limited
- 2nd-row cloth 40/40 reclining bucket seats with power folding feature — Available on SE
- 2nd-row leather-trimmed 40/40 reclining bucket seats with power folding feature — Available on SEL
- 2nd-row perforated, leather-trimmed heated 40/40 reclining bucket seats with power folding feature — Available on Limited
- Power Code™ Remote Start System — Available on SE, SEL and Limited

3 Choose special value packages

■ Class III Trailer Tow Package

Includes hitch receiver with 4500-lb. rating, 4-/7-pin connector with wiring harness, engine oil cooler and tire mobility kit² — Available on SE, SEL and Limited (Fall 2008 on FWD models)

■ Convenience Package

Includes 110-volt, 150-watt inverter with AC outlet, power-adjustable pedals with memory, power liftgate, memory settings for driver seat and sideview mirrors, and security approach lamps — Available on SEL; standard on Limited

■ Lighting Package

Includes Ambient Lighting, HID headlamps and LED taillamps — Available on SEL; standard on Limited

¹Limited coverage in Alaska.

²In addition to standard spare.

© 2008 SIRIUS Satellite Radio Inc. "SIRIUS," the SIRIUS dog logo, "SIRIUS Travel Link" and related marks are registered trademarks of SIRIUS Satellite Radio Inc.

WHEELS

- A. 18" painted-aluminum — SE
- B. 18" machined-aluminum — SEL
- C. 19" polished-aluminum — Limited
- D. 20" bright painted-aluminum — Optional on SEL and Limited
- E. 20" chromed-aluminum — Available as a Genuine Ford Accessory (available late 4th quarter 2008)
- F. 20" polished-aluminum — Available as a Genuine Ford Accessory (available late 4th quarter 2008)
- G. 22" chromed-aluminum — Available as a Genuine Ford Accessory (available late 4th quarter 2008)
- 17" aluminum — Optional on SE (not shown; snow states only)



A



B



C



D



E



F



G

Comparisons based on 2008 competitive models, publicly available information and Ford certification data at time of release. Some features discussed may be optional. Vehicles shown may contain optional equipment. Features shown may be offered only in combination with other options or subject to additional ordering requirements or limitations. Dimensions shown may vary due to optional features and/or production variability. Following release of this PDF, certain changes in standard equipment, options and the like, or product delays may have occurred which would not be included in these pages. Your Ford Dealer is the best source for up-to-date information. Ford Division reserves the right to change product specifications at any time without incurring obligations.



Drive one.

09 FLEX

IT STRUTS YOUR STYLE

with Custom Accessories



Genuine Ford Accessories will be warranted for whichever provides you the greatest benefit: 12 months or 12,000 miles (whichever occurs first), or the remainder of your Bumper-to-Bumper 36-month/36,000-mile New Vehicle Limited Warranty. Contact your local Ford Dealer for details and a copy of the limited warranty. Ford Licensed Accessories (FLA) are warranted by the accessory manufacturer's warranty. Contact your Ford Dealer for details regarding the manufacturer's limited warranty and/or a copy of the FLA product limited warranty offered by the accessory manufacturer.

- A. Rear spoiler
- B. Rear tailgate appliqué in Faux Carbon Fiber*
- C. Body kit*
- D. 22" chrome wheels (available late 4th quarter 2008)
- E. Exterior graphics kit
- F. Groove inserts in Faux Carbon Fiber*
- G. Dual INVISION® DVD Headrests*
- H. Conversation mirror
- I. Front lighted sill plates
- J. All-weather floor mats
- K. Locking fuel plug
- L. Interior cargo organizer (available late 4th quarter 2008)
- M. Interior Trim Kit in Faux Carbon Fiber*
- N. Katzkin® Leather seat covers*

Also available:

Skyway SmartAlert™*
 Ford SYNC™ (available Fall 2008)
 HD Radio®*
 Garmin® nüvi® Portable Navigation System*
 Trailer hitch balls/draw bars
 Thule® racks*
 Wheel locks
 Bug deflector
 Side window deflectors
 Flat splash guards
 Interior cargo net
 Interior cargo protector
 All-weather 3rd-row floor mats
 Premium carpeted floor mats
 Ashcup/coin holder/Smoker's Pack

*Ford Licensed Accessories.
 Garmin is a registered trademark of Garmin Ltd.

Visit fordaccessories.com to use the Accessorizer, learn complete accessory details and view purchase instructions.



Plus many other color combinations

fordvehicles.com



Drive one.

09 FLEX



IT EVEN INSPIRES DESIGNERS

just ask Foose and Funkmaster Flex

When master designer and star of "Overhaulin'," Chip Foose, and New York City-based urban legend, Funkmaster Flex, caught a glimpse of Ford's latest release, they knew they had to get their hands on it.

Check out their interpretations. But sorry, we're not giving these up. You'll have to create your own.



Drive one.

09 FLEX



Drive quality.

When you hear the solid closing of the door, you'll understand. Ford is in a dead heat with Toyota when it comes to quality.¹



Drive green.

An efficient 6-speed transmission and impressive 24-mpg fuel economy² make Flex one of the friendliest ways to transport 7 people.



Drive safe.

Ford has more 5-Star crash test ratings³ than any company in U.S. history. With 6 standard airbags, Flex is ready to pass the test.



Drive smart.

Available Ford SYNCTM communications and entertainment, SONY[®] premium audio, voice-activated navigation, even a refrigerator. Clever.



¹Based on cumulative survey data of 2007 MY Ford and competitive owners at 3 months of service in 3 surveys conducted 9/06–5/07. ²EPA-estimated 17 mpg city/24 hwy. FWD. ³Star ratings are part of the U.S. Department of Transportation's Safercar.gov program (www.safercar.gov).

New Vehicle Limited Warranty. We want your Ford Flex ownership experience to be the best it can be. So under this warranty, your new vehicle comes with 3-year/36,000-mile Bumper-to-Bumper Coverage, 5-year/60,000-mile Powertrain Warranty Coverage, 5-year/50,000-mile Safety Restraint Coverage, and 5-year/unlimited-mile Corrosion (Perforation) Coverage — all with no deductible. Please ask your Ford Dealer for a copy of this limited warranty.

Roadside Assistance is extended to 5 years or 60,000 miles, so you have the security of knowing that help may be only a phone call away should you run out of fuel, lock yourself out of the car, or need towing. Your Ford Dealer can provide complete details on all of these advantages.



Get the ride you want. Whether you plan to lease or finance, you'll find the choices that are right for you at Ford Credit. Ask your Ford Dealer for details or check us out at fordcredit.com.



Get Ford Motor Company quality in your auto insurance. Our program offers industry-leading benefits and competitive rates. Call 1-877-367-3847, or visit us at fordvip.com for a no-obligation quote. Insurance offered by American Road Services Company (in CA, American Road Insurance Agency), a licensed agency and subsidiary of Ford Motor Company.



For a purchase or lease, the Ford Extended Service Plan (ESP) gives you "Peace-of-Mind" protection designed to cover key vehicle components and protect you from the cost of unexpected repairs. Ask your dealer for a Ford ESP, the only service contract backed exclusively by Ford and honored at all Ford Lincoln Mercury dealerships.