



Drive one.

09 RANGER



fordvehicles.com



Drive one.

09 RANGER



Ranger XLT SuperCab 4x2 • Silver • Other Available Equipment

Vehicles throughout this PDF may be shown with optional and aftermarket equipment.

RANGER KNOWS MILEAGE RULES

SO, THE PICKUP WITH UNSURPASSED GAS MILEAGE IN NORTH AMERICA¹ delivers that and a whole lot more. It's big on capability, reliability, durability and value, too. Ranger's always ready on the work front — it can tow up to 6000 lbs.² And on the weekend, it's ready to play just as hard. A wide selection of body

styles, trim levels and options lets you build the truck that fits your work style and your lifestyle, from moving heavy loads, to off-road adventure, to cruising with your favorite tunes. Every day, the rugged Ford Ranger lives up to the reputation of Built Ford Tough.[®] With all Ranger has to offer, it's easy to see — this pickup can take you a long, long way.

¹4x2 with 2.3L engine and 5-speed manual transmission. Based on EPA-estimated mileage for 2009 Ranger compared with 2008/2009 model-year pickups. ²Properly equipped.



Drive one.

09 RANGER

RANGER SAFETY

THE PERSONAL SAFETY SYSTEM[®] is an impressive array of sophisticated technologies that determines the severity of a crash, safety belt use, driver-seat position and right-front passenger size to control the deployment force of the airbags.

THE TIRE PRESSURE MONITORING SYSTEM illuminates a warning light if pressure in any mounted tire is significantly low.²

56.5"-LONG REAR LEAF SPRINGS help you maintain control while hauling a big payload or towing up to 6000 lbs.¹

HEAVY-DUTY SHOCKS are gas-charged, front and rear. They help stabilize ride and handling under heavy loading, while offering a civilized ride, loaded or unloaded.

BUILT FORD TOUGH FRONT SUSPENSIONS on all Ranger 4x4s come equipped with torsion bars to allow long wheel travel for enhanced off-road capability. Most Ranger 4x2s use front coil springs (not shown) to promote smooth on-road ride and handling.

ELECTRONIC SHIFT-ON-THE-FLY (ESOF) makes selecting the right drive as simple as turning a switch. It's standard on Ranger 4x4s.

FRONT TOW HOOKS available on all 4x4s give you a rugged connection point for assisting less-capable trucks.

3 STEEL SKID PLATES (front suspension, transfer case and fuel tank) are standard on SPORT 4x4 and FX4 OFF-ROAD.

FULLY BOXED FRONT FRAME RAILS provide a solid foundation for the engine and front suspension.

4-WHEEL ANTI-LOCK BRAKE SYSTEM (ABS) provides impressive stopping power and supports heavy hauling and towing.

Ranger XLT SuperCab 4x4 • Vista Blue • Other Available Equipment

RANGER STANDS STRONG

LEGENDARY CAPABILITY AND DURABILITY give you the confidence to tackle the big jobs. It all starts with Built Ford Tough[®] construction. From its rock-solid steel ladder frame to robust braking and suspension systems and double-wall cargo box, Ranger is designed to get your work done, mile after mile, year after year.



RANGER POWER

THE TOP-OF-THE-LINE 4.0L V6 (left) is an optional engine that delivers maximum towing, hauling and rock-crawling capability with 207 hp and 238 lb.-ft. of torque on tap. THE 2.3L DOHC I-4 (right) is a fuel economy champ that helps Ranger post one of the best mileage numbers of any pickup in North America.³

¹Properly equipped. ²Does not monitor spare tire pressure. ³4x2 with 2.3L engine and 5-speed manual transmission. Based on EPA-estimated mileage for 2009 Ranger compared with 2008/2009 model-year pickups.



Drive one.

09 RANGER



A CLASS-EXCLUSIVE¹ 7' PICKUP BOX makes your Ranger XL or XLT Regular Cab long on capacity (43.6 cu. ft.). It's the only 7' box available on a compact pickup.

7'

Top Left: Ranger XL Regular Cab 4x2 • Silver • Other Available Equipment

Top Right: Ranger XLT SuperCab 4x4 • Black • Other Available Equipment

RANGER OFFERS TOUGH CHOICES

LIKE EVERY FORD TRUCK, BUILT FORD TOUGH® gives Ranger a rugged foundation on which to build the capabilities of your choice. No bare-bones work truck, Ranger XL takes safety and security seriously, with the standard Personal Safety System® and Tire Pressure Monitoring System to instill confidence. If you'd like to step up a notch, Ranger XLT adds extras like a chrome H-bar grille and air conditioning. Capability and a dash of style are right here with Ranger XL and Ranger XLT. All you have to do is choose.

¹Class is Compact Pickups.



RANGER TOWING

NEW FOR 2009, A TRAILER HITCH RECEIVER is standard on all Ranger models. Class III capability comes standard when you choose a Ranger with the 4.0L V6.

RANGER VERSATILITY

THIS OPTIONAL BED EXTENDER lets you add usable bed space. Just open the tailgate and secure the extender in place. It also works as a bed partition when the tailgate is closed.

fordvehicles.com



Drive one.

09 RANGER



Ranger SPORT SuperCab 4x2 • Vista Blue • Other Available Equipment

RANGER SAYS TAKE A GOOD LOOK

IF YOU LIKE TO BE NOTICED, RANGER SPORT IS YOUR TRUCK. It's a fully capable Ranger that racks up style points big-time. SPORT features a unique grille, body-color trim, and a range of wheels to accent your choice of cab and driveline. An optional bedliner accessory can protect the cargo box and the gear you put back there. SPORT is a Built Ford Tough® Ranger that's ready to do big jobs, have big fun and look good wherever it goes.



AUXILIARY AUDIO INPUT — Premium Ranger Audio Systems* come equipped with an audio input jack so you can plug in your favorite tunes from an MP3 player or other compatible music source.

*Properly equipped.

fordvehicles.com



Drive one.

09 RANGER



Ranger FX4 OFF-ROAD SuperCab 4x4 • Grabber Orange • Other Available Equipment

RANGER LETS YOU GO CLIMB A ROCK

ROCK CLIMBING, MUD BOGGING, OR A 20% GRADE — they're all in a day's work for FX4 OFF-ROAD. This Ranger is backcountry-ready with Electronic Shift-On-the-Fly (ESOF), 3 skid plates, a limited-slip rear differential and Goodyear® Wrangler RT/S all-terrain tires as standard equipment. Ranger's compact size is a big advantage on tight trails, and its substantial capabilities give you an edge in all your adventures. Any way you look at it, this Ranger is an off-road favorite that's ready to go.



RANGER STYLE

TWO-TONE CLOTH SPORT BUCKETS WITH RED OR BLUE INSERTS are an FX4 OFF-ROAD exclusive. They're the signature look of a Ranger that's tough enough to go far beyond the road's end. This setup includes driver-side lumbar support and a center console with ample storage.

fordvehicles.com



Drive one.

09 RANGER



TAKE YOUR PICK

THERE ARE DOZENS OF WAYS TO TURN UP THE FUN on your Ranger. Choose hotter wheels, premium audio, or add power accessories to build your dream truck. Every Ford Ranger option is designed with style, functionality and your satisfaction in mind.

A 4-DOOR SUPERCAB gives rear passengers their own doors and jump seats. This optional cab style provides easy access, plus room to bring along a couple of friends or secure storage for your valuable gear.



- A. COOL WHEELS** are specially designed to give your Ranger that custom look, and engineered to deliver rigorous on-road and off-road service.
- B. THE AM/FM STEREO/6-DISC IN-DASH CD CHANGER WITH MP3/SAT CAPABILITY** adds the all-in-one convenience of a 6-disc changer to your Ranger audio system.
- C. THE PIONEER® 290-WATT SOUND SYSTEM** is a sonic powerhouse that features a 6-disc in-dash CD changer with MP3/SAT radio capability, AM/FM receiver/2-channel amp, and audio input jack. A center console-mounted 6½" subwoofer, 5¼" polypropylene mid-range speakers with separate ¾" soft-dome tweeters, and 6" x 8" dual-cone full-range speakers deliver maximum sound quality.

SIRIUS® SATELLITE RADIO² capability comes standard on FX4 OFF-ROAD and SPORT, optional on XL³ and XLT. It delivers over 130 channels of digital-quality programming coast to coast, including sports, news, talk, entertainment and 100% commercial-free music. Factory installation integrates seamlessly with Ranger audio systems. A 6-month subscription is included.



¹Except on SPORT. ²Compatible with all Ranger MP3 audio systems. Service not available in Alaska or Hawaii. See your Ford Dealer or contact SIRIUS at 1-888-539-7474 for more information. "SIRIUS," the SIRIUS dog logo and "The Best Radio on Radio" are registered trademarks of SIRIUS Satellite Radio Inc. ³With required audio system.



Drive one.

09 RANGER

Customize your Ranger

- A. Garmin® nüvi® Portable Navigation System¹
- B. Keyless entry keypad
- C. Taillamp surrounds
- D. Sliding rear window
- E. Cargo cage bed extender
- F. Bed mat
- G. Interior cargo organizer
- H. Trailer hitch balls/draw bars
- I. Chrome exhaust tip
- J. Hard tonneau cover by LeerTM
- K. Carpeted bedliner
- L. Bedliners
- M. Soft tonneau cover without snaps
- N. All-weather floor mats
- O. Remote start systems
- P. Bug deflector
- Q. Side step bars

Also available:

- Soft tonneau cover with snaps
- Bed-rail caps
- Electrochromic mirrors
- Vehicle security system
- Side window deflectors
- Premium carpeted floor mats
- Wheels

¹Ford Licensed Accessories.
Garmin is a registered trademark of Garmin Ltd.

Visit fordaccessories.com to use the Accessorizer,
learn complete accessory details and view purchase instructions.



Genuine Ford Accessories will be warranted for whichever provides you the greatest benefit: 12 months or 12,000 miles (whichever occurs first), or the remainder of your Bumper-to-Bumper 3-year/36,000-mile New Vehicle Limited Warranty. Contact your local Ford Dealer for details and a copy of the limited warranty. Ford Licensed Accessories (FLA) are warranted by the accessory manufacturer's warranty. Contact your Ford Dealer for details regarding the manufacturer's limited warranty and/or a copy of the FLA product limited warranty offered by the accessory manufacturer.





Drive one.

09 RANGER

Dimensions

EXTERIOR	REGULAR CAB	SUPERCAB
	4x2	4x2/4x4
Length –		
6' box	189.4"	203.6"
7' box	201.4"	—
Wheelbase –		
6' box	111.5"	125.7"/125.9"
7' box	117.5"	—
Overhang – Front	34.0"	34.0"
Overhang – Rear		
6' box	44.0"	44.0"/43.8"
7' box	49.9"	—
Width –		
Excluding mirrors	69.3"	69.4"
Including mirrors	81.3"	81.3"
Height –		
6' box	66.2"	66.3"/67.7"
7' box	66.2"	—
Minimum ground clearance	7.9"	8.0"
Ground to open tailgate height –		
6' box	29.7"	29.5"/31.9"
7' box	29.2"	—
Ramp breakover angle –		
6' box	24.4°	23.3°/18.6°
7' box	24.5°	—
Angle of approach –		
6' box	23.5°	23.8°/24.9°
7' box	24.3°	—
Angle of departure –		
6' box	24.6°	24.3°/27.4°
7' box	21.2°	—

INTERIOR	REGULAR CAB	SUPERCAB
	4x2	4x2/4x4
Front		
Head room	39.2"	39.2"
Shoulder room	54.5"	54.5"
Hip room	52.7"	52.7"
Leg room	42.4"	42.4"
Rear		
Head room	—	33.2"
Shoulder room	—	15.3"/14.1"
Hip room	—	19.4"/18.7"
Leg room	—	39.3"/39.1"
Cargo box	6'7"	6'
Volume (cu. ft.)	37.4/43.6	37.4
Length at floor	72.7"/84.6"	72.7"
Width at wheelhouse	40.5"	40.5"
Rear opening width at floor	54.4"	54.4"
Height	16.5"	16.5"

Cargo and load capacity limited by weight and weight distribution.

Standard Features

MECHANICAL	SAFETY/SECURITY	INTERIOR	EXTERIOR
<ul style="list-style-type: none"> • 90,000-mile tune-up interval¹ • 4-wheel Anti-lock Brake System (ABS) • Battery saver automatically deactivates interior lights • Body-on-frame construction • Electronic Brakeforce Distribution (EBD) • Front disc/rear drum brakes • Power rack-and-pinion steering • Suspension – Front: independent Short- and Long-Arm with stabilizer bar; rear: 2-stage leaf springs 	<ul style="list-style-type: none"> • Belt-Minder® front safety belt reminder • Personal Safety System® for driver and right-front passenger – Includes dual-stage front airbags²; safety belt pretensioners, safety belt energy-management retractors, safety belt usage sensors, driver-seat position sensor, crash severity sensor, restraint control module and Front-Passenger Sensing System • Safety belt height adjusters for front-outboard positions • SecuriLock® passive anti-theft ignition system • Side-intrusion door beams • Tire Pressure Monitoring System (excludes spare) 	<ul style="list-style-type: none"> • Audio system (varies by model) • Cupholders • Dome light • Front 60/40 split seat (except FX4 OFF-ROAD) • Gauge cluster with tachometer • Glove compartment • Grab handles for driver and front passenger • Power point (12V) • Smoker's Package includes ashcup and cigarette lighter • 4-spoke black urethane steering wheel 	<ul style="list-style-type: none"> • Cargo box tie-down hooks (4) • H-bar-style grille • Manual sideview mirrors • Raised power dome hood • Solar-tinted glass • Space-saver, temporary spare (excludes TPMS) • Stone guards/mudflaps (vary by model) • Tailgate with quick release • Windshield wipers – Intermittent with "courtesy swipe"

¹Under normal driving conditions with routine fluid and filter changes. ²Always wear your safety belt.



Drive one.

09 RANGER

Model Lineup



XL

- 2.3L DOHC I-4 engine (Regular Cab/SuperCab 4x2)
- 5-speed manual transmission with overdrive
- Black H-bar grille
- Black front and rear bumpers
- Manual sideview mirrors
- Black door handles and sideview mirror caps
- 15" 7-spoke silver-painted steel wheels with P225/70R15 all-season BSW tires
- Heavy-duty shock absorbers
- Personal Safety System with Front-Passenger Sensing System
- AM/FM stereo with clock
- Manual windows
- Black vinyl floor covering
- Black urethane steering wheel
- Vinyl 60/40 split seat (cloth on SuperCab)
- SecuriLock® passive anti-theft ignition system
- Tire Pressure Monitoring System
- Trailer tow receiver – Class III capability (when equipped with 4.0L V6)
- 2 skid plates (SuperCab 4x2)

4x4: 4.0L V6

- Electronic Shift-On-the-Fly (ESOF)
- P235/75R15 all-terrain OWL tires



XLT

Includes all the standard Ranger XL features, plus:

- 2.3L DOHC I-4 engine (Regular Cab/SuperCab 2-door 4x2)
- 4.0L V6 engine (SuperCab 4-door)
- Air conditioning
- Chrome H-bar grille
- Body-color front and rear bumpers
- Color-coordinated carpet and carpeted front floor mats
- AM/FM stereo/single-CD player with MP3/SAT radio capability
- Cloth 60/40 split seat
- Rear jump seats (SuperCab 4-door V6 only)

4x2:

- 15" 7-spoke silver-painted steel wheels with P225/70R15 all-season OWL tires

4x4: 4.0L V6

- Fog lamps
- Tow hooks
- 15" 7-spoke chrome-clad steel wheels with P235/75R15 all-terrain OWL tires
- Heavy-duty shock absorbers



SPORT

Includes all the standard Ranger XLT features, plus:

- 2.3L DOHC I-4 engine (Regular Cab 4x2)
- 4.0L V6 engine (all SuperCabs)
- Black horizontal-slat grille insert with body-color surround
- Body-color front and rear bumpers, wheel-lip moldings, door handles and sideview mirror caps
- Black rugged vinyl floor covering
- SIRIUS Satellite Radio
- Fog lamps
- Black side step bars (SuperCab)
- Heavy-duty shock absorbers

4x2:

- 15" split-spoke machined cast-aluminum wheels with P225/70R15 all-season OWL tires (Regular Cab) or P235/75R15 all-terrain OWL tires (SuperCab)
- 2 skid plates (SuperCab)

4x4: 4.0L V6

- 16" Y-spoke cast-aluminum wheels with P255/70R16 all-terrain OWL tires (SuperCab)
- Tow hooks
- 3 skid plates (SuperCab)



FX4 OFF-ROAD

Includes all the standard Ranger SPORT features, plus:

- 4.0L V6 engine
- Body-color H-bar grille
- Accent-color front and rear bumpers
- Limited-slip rear differential
- Carbon Black molded-in-color wheel-lip moldings
- Bed-rail and tailgate lip protectors
- Power sideview mirrors
- Black door handles and sideview mirror caps
- 3 skid plates
- Rancho®-branded heavy-duty gas shocks
- 16" Y-spoke cast-aluminum wheels with P255/70R16 all-terrain OWL tires
- Leather-wrapped tilt steering wheel with cruise control
- Power Equipment Group with remote keyless-entry system
- Black rugged vinyl floor covering with front slush-type floor mats
- Privacy glass
- Sport bucket seats with driver manual lumbar support, center floor console and storage
- Vinyl rear jump seats (4-door)



Drive one.

09 RANGER

Maximum Loaded Trailer Weight¹ (lbs.)

MANUAL TRANSMISSION			REGULAR CAB		SUPERCAB	
ENGINE	AXLE RATIO	GCWR	4x2 (6' Box/7' Box)	4x2	4x4	
2.3L DOHC I-4	3.73 or 4.10	4800	1580/1540	1420	—	
			1520 ² /—			
4.0L V6	3.55	7000	—	3400/3220 ²	—	
	3.73 or 4.10	7000	—	—	3140	

AUTOMATIC TRANSMISSION			REGULAR CAB		SUPERCAB	
ENGINE	AXLE RATIO	GCWR	4x2 (6' Box/7' Box)	4x2	4x4	
2.3L DOHC I-4	4.10	5500	2240/2220	2080	—	
			1960 ² /—			
4.0L V6	3.55	9500	6000 ³	5860/5680 ²	—	
	3.73 or 4.10	9500	—	—	5600	

Engines

	2.3L DOHC 16-VALVE I-4	4.0L 12-VALVE V6
Horsepower (hp @ rpm)	143 @ 5250	207 @ 5250
Torque (lb.-ft. @ rpm)	154 @ 3750	238 @ 3000

Maximum Payload¹ (lbs.)

REGULAR CAB		4x2	
ENGINE	BOX SIZE	MAX. GVWR	MAX. AVAILABLE PAYLOAD
2.3L DOHC I-4	6'	4300/4360 ²	1180
2.3L DOHC I-4/ 4.0L V6	7'	4320	1160

SUPERCAB		4x2		4x4	
ENGINE	BOX SIZE	MAX. GVWR	MAX. AVAILABLE PAYLOAD	MAX. GVWR	MAX. AVAILABLE PAYLOAD
2.3L DOHC I-4	6'	4760	1260	—	—
4.0L V6	6'	4840	1340	5140	1380
4.0L V6 ⁴	6'	5100	1600	5280	1520

2009 EPA-Estimated Fuel Economy (mpg)

ENGINE	TRANSMISSION	4x2		4x4	
		CITY	HIGHWAY	CITY	HIGHWAY
2.3L DOHC I-4	5-Speed Manual	21	26	—	—
	5-Speed Automatic	19	24	—	—
4.0L V6	5-Speed Manual	15	21	15	19
	5-Speed Automatic	16	21	14	18

¹Maximum capabilities shown are for properly equipped vehicles with required equipment and a 150-lb. driver. Weight of additional options, equipment, passengers and cargo must be deducted from this weight. For additional information, see your Ford Dealer.
 NOTE: Ranger does not have an electric brake wiring provision. Certain states require electric trailer brakes over a specified trailer weight. In those states, the Ranger maximum loaded trailer weight is limited to the state regulation. Check your state's trailer weight regulations. ²Ranger SPORT only. ³Requires 7-ft. box. ⁴With Payload Package #2.



Drive one.

COLORIZE YOUR RANGER

Exterior and Interior Selections



Vista Blue Metallic



Torch Red



Redfire Metallic



Dark Shadow Grey Metallic



Black



Grabber Orange



Silver Metallic



Oxford White

*FX4 OFF-ROAD standard two-tone paint lower portion is Dark Shadow Grey for all colors except Dark Shadow Grey Metallic. Two-tone Dark Shadow Grey Metallic upper exterior color will receive Black lower body color. †Limited production; Silver Metallic available late Fall 2008 on XLT, SPORT and FX4 OFF-ROAD; available entire year on XL.

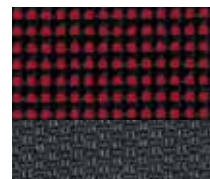
Ford uses clearcoat paint for beauty and protection. Colors shown are representative only. Not all colors are available on all models. See your dealer for actual paint/trim options. Vehicles shown may contain optional equipment.

	XL	XLT	SPORT	FX4 OFF-ROAD [†]
Vista Blue Metallic	■	■	■	■ ■
Torch Red	■	■	■	■ ■
Redfire Metallic		■	■	■ ■
Dark Shadow Grey Metallic	■	■	■	■ ■
Black	■	■	■	■ ■
Grabber Orange [‡]		■	■	■ ■
Silver Metallic [‡]	■	■	■	■ ■
Oxford White	■	■	■	■ ■

■ MEDIUM DARK FLINT ■ EBONY/RED ■ EBONY/BLUE ■ SOLID EBONY



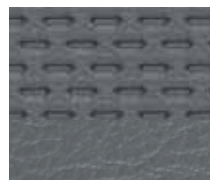
Medium Dark Flint Cloth



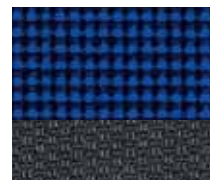
Ebony/Red Cloth



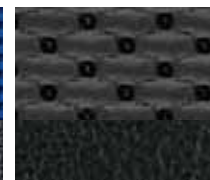
Medium Dark Flint Leather



Medium Dark Flint Vinyl



Ebony/Blue Cloth



Solid Ebony Leather

Comparisons based on 2008 competitive models (Class is Compact Pickups), publicly available information and Ford certification data at time of release. Some features discussed may be optional. Vehicles shown may contain optional equipment. Features shown may be offered only in combination with other options or subject to additional ordering requirements or limitations. Dimensions and capability ratings shown may vary due to optional features and/or production variability. Following release of this PDF, certain changes in standard equipment, options and the like, or product delays may have occurred which would not be included in these pages. Your Ford Dealer is the best source for up-to-date information. Ford Division reserves the right to change product specifications at any time without incurring obligations.

New Vehicle Limited Warranty. We want your Ford Ranger ownership experience to be the best it can be. So under this warranty, your new vehicle comes with 3-year/36,000-mile Bumper-to-Bumper Coverage, 5-year/60,000-mile Powertrain Warranty Coverage, 5-year/50,000-mile Safety Restraint Coverage, and 5-year/unlimited-mile Corrosion (Perforation) Coverage – all with no deductible. Please ask your Ford Dealer for a copy of this limited warranty.

Roadside Assistance. Covers your vehicle for 5 years or 60,000 miles, so you have the security of knowing that help may be only a phone call away should you run out of fuel, lock yourself out of the vehicle, or need towing. Your Ford Dealer can provide complete details on all of these advantages.

Ford Credit. Get the ride you want. Whether you plan to lease or finance, you'll find the choices that are right for you at Ford Credit. Ask your Ford Dealer for details or check us out at fordcredit.com.

Extended Service Plan. For a purchase or lease, the Ford Extended Service Plan (ESP) gives you "Peace-of-Mind" protection designed to cover key vehicle components and protect you from the cost of unexpected repairs. Ask your dealer for an ESP, the only service contract backed exclusively by Ford and honored at all Ford Lincoln Mercury dealerships.

Insurance Services. Get Ford Motor Company quality in your auto insurance. Our program offers industry-leading benefits and competitive rates. Call 1-877-367-3847, or visit us at fordvip.com for a no-obligation quote. Insurance offered by American Road Services Company (in CA, American Road Insurance Agency), a licensed agency and subsidiary of Ford Motor Company.





Drive one.

09 RANGER



QUALITY TRUCKS.

Ranger has a reputation for quality that has made it one of America's most popular compact trucks for years.



GREEN TRUCKS.

Ranger's 2.3L I-4 is unsurpassed in fuel economy by any pickup sold in North America.¹



SAFE TRUCKS.

Ranger's standard Personal Safety System[®] helps optimize airbag deployment to help protect everyone inside.



SMART TRUCKS.

A right-sized pickup that offers so much practicality, versatility and capability, Ford Ranger is the smart choice.



¹4x2 with 2.3L engine and 5-speed manual transmission. Based on EPA-estimated mileage for 2009 Ranger compared with 2008/2009 model-year pickups.



© 2008 Ford Motor Company

09RANWEBPDF

fordvehicles.com