



2010
BUILT
Ford
TOUGH

Specifications

fordvehicles.com



XL

AVAILABILITY

CAB:
Regular Cab ■ SuperCab ■ SuperCrew

ENGINE:
4.6L 2-valve V8 ■ 4.6L 3-valve V8 ■ 5.4L 3-valve V8 FFV

DRIVETRAIN:
4x2 ■ 4x4

STANDARD EQUIPMENT

- MECHANICAL: Tire Pressure Monitoring System (excludes spare); Easy Fuel™ capless fuel filler
- SAFETY/SECURITY: AdvanceTrac® with RSC® (Roll Stability Control™); Personal Safety System™; Safety Canopy® System; SOS Post-Crash Alert System™; Trailer Sway Control
- EXTERIOR: Argent-painted front and rear step bumpers; black bar-style grille with black surround; black front bumper upper fascia; black manual sideview mirrors (Regular Cab and SuperCab); black power sideview mirrors (SuperCrew); 17" grey styled-steel wheels
- INTERIOR: Vinyl 40/20/40 split front seats; vinyl 60/40 split flip-up rear seat (SuperCab and SuperCrew); solar-tinted glass with fixed rear window; air conditioning; AM/FM stereo with clock; visors with driver-side map strap and passenger-side mirror; urethane steering wheel; tachometer; vinyl floor covering; display center; manual windows (Regular Cab and SuperCab); power windows and door locks (SuperCrew); tilt steering wheel



STX

AVAILABILITY

CAB:
Regular Cab ■ SuperCab

ENGINE:
4.6L 2-valve V8 ■ 4.6L 3-valve V8

DRIVETRAIN:
4x2 ■ 4x4

STANDARD EQUIPMENT

Includes all XL features, plus:

- EXTERIOR: STX decals; body-color front and rear step bumpers, grille surround and front bumper upper fascia; 17" machined-aluminum wheels
- INTERIOR: Cloth 40/20/40 split front seats with driver manual lumbar; cloth 60/40 split flip-up rear seat (SuperCab); AM/FM stereo/single-CD player; auxiliary audio input jack; rear cupholders (SuperCab); MyKey™ owner controls feature



XLT

AVAILABILITY

CAB:
Regular Cab ■ SuperCab ■ SuperCrew

ENGINE:
4.6L 2-valve V8 ■ 4.6L 3-valve V8 ■ 5.4L 3-valve V8 FFV

DRIVETRAIN:
4x2 ■ 4x4

STANDARD EQUIPMENT

Includes all STX features, plus:

- EXTERIOR: Chrome front and rear step bumpers; chrome bar-style grille with chrome surround; remote keyless-entry system; power sideview mirrors; 17" machined-aluminum wheels with painted accents
- INTERIOR: Premium cloth 40/20/40 split front seats; premium cloth 60/40 split flip-up rear seat (SuperCab and SuperCrew); autolamp; power accessory delay; color-coordinated carpet and floor mats; cruise control; visors with covered mirrors; power windows (including 2nd-row on SuperCab and SuperCrew); power door locks; tripminder; outside temperature and compass display; rear cupholders (SuperCab and SuperCrew); fixed rear privacy window



FX2

AVAILABILITY

CAB:
SuperCab ■ SuperCrew

ENGINE:
4.6L 3-valve V8 ■ 5.4L 3-valve V8 FFV

DRIVETRAIN:
4x2

STANDARD EQUIPMENT

Includes all XLT features, plus:

- EXTERIOR: FX2 Sport decals; body-color front and rear step bumpers; Sterling Grey billet-style grille with body-color surround; fog lamps; body-color wheel-lip moldings; SecuriCode™ keyless-entry keypad; accent-color headlamps and taillamps; chrome exhaust tip; accent-color 6" angular running boards; body-color door handles; 18" machined-aluminum wheels with painted accents
- INTERIOR: Sport cloth front bucket seats with flow-through console and floor shifter; driver and right-front-passenger manual lumbar; 6-way power driver seat; Black leather-wrapped steering wheel; FX logo carpeted floor mats



FX4

AVAILABILITY

CAB:
SuperCab ■ SuperCrew

ENGINE:
5.4L 3-valve V8 FFV

DRIVETRAIN:
4x4

STANDARD EQUIPMENT

Includes all XLT features, plus:

- MECHANICAL: Electronic Shift-On-the-Fly (ESOF); electronic-locking rear axle; skid plates – 2 steel (front crossmember and transfer case), 1 composite (fuel tank); Trailer Tow Package
- EXTERIOR: FX4 OFF-ROAD decals; body-color front and rear step bumpers; black bar-style grille with body-color surround; fog lamps; Sterling Grey wheel-lip moldings; SecuriCode keyless-entry keypad; 18" machined cast-aluminum wheels
- INTERIOR: Sport cloth front bucket seats with flow-through console and floor shifter; driver and right-front-passenger manual lumbar; 6-way power driver seat; SIRIUS Satellite Radio; Black leather-wrapped steering wheel; Black rubber off-road floor mats; rear-window defroster

Vehicles shown with optional equipment.



LARIAT

AVAILABILITY

CAB:
SuperCab ■ SuperCrew

ENGINE:
5.4L 3-valve V8 FFV

DRIVETRAIN:
4x2 ■ 4x4

STANDARD EQUIPMENT

Includes all XLT features, plus:

- EXTERIOR: Chrome front/rear step bumpers and body-color wheel-lip moldings (with monotone paint); Pueblo Gold front/rear step bumpers and wheel-lip moldings (with two-tone paint); chrome 2-bar grille with Silver-painted mesh insert; power, heated sideview mirrors with memory, body-color caps, integrated turn-signal indicators and auto-dimming driver-side feature; body-color door handles; 18" bright-aluminum wheels
- INTERIOR: Leather-trimmed seats; 10-way power, heated front seats; memory driver seat; visors with lighted, covered vanity mirrors; Dual-zone Electronic Automatic Temperature Control; SIRIUS Satellite Radio; Ford SYNC®; color-coordinated, carpeted floor mats; message center; color-coordinated, leather-wrapped steering wheel with secondary audio controls; auto-dimming rearview mirror; power-adjustable pedals with memory; woodgrain-style trim; power-sliding rear privacy window with defrost



KING RANCH®

AVAILABILITY

CAB:
SuperCrew

ENGINE:
5.4L 3-valve V8 FFV

DRIVETRAIN:
4x2 ■ 4x4

STANDARD EQUIPMENT

Includes all LARIAT features, plus:

- EXTERIOR: KING RANCH® badges; Pueblo Gold front/rear bumpers and wheel-lip moldings; 2-bar grille with chrome surround and color-coordinated mesh insert; two-tone paint with Pueblo Gold lower accent color; power-fold, heated sideview mirrors with memory, chrome caps, integrated turn-signal indicators, security approach lamps and auto-dimming driver-side feature; color-coordinated box rail/tailgate moldings and platform running boards; Reverse Sensing System; Rear View Camera; 18" aluminum wheels with KING RANCH® logo
- INTERIOR: Chaparral leather-trimmed, 10-way power, heated and cooled front bucket seats; heated Chaparral leather-trimmed 60/40 split one-touch fold-up rear seat with folding armrest; Chaparral leather-wrapped steering wheel; Sony® AM/FM stereo/6-disc in-dash CD changer with MP3 capability and speed-compensated volume control; Universal Garage Door Opener; KING RANCH® woodgrain-style trim; front flow-through console with Chaparral leather-trimmed lid; unique KING RANCH® floor mats



PLATINUM

AVAILABILITY

CAB:
SuperCrew

ENGINE:
5.4L 3-valve V8 FFV

DRIVETRAIN:
4x2 ■ 4x4

STANDARD EQUIPMENT

Includes all LARIAT features, plus:

- EXTERIOR: PLATINUM badges; body-color front/rear bumpers and wheel-lip moldings; Satin-finish grille surround with chrome mesh insert; chrome front tow hooks (4x4); chrome door handles; power-deployable running boards; power-fold, heated sideview mirrors with memory, chrome caps, integrated turn-signal indicators, security approach lamps and auto-dimming driver-side feature; bright bodyside accent moldings; high-gloss Black B-pillar appliqué; chrome exhaust tip; satin-finish tailgate appliqué; rain-sensing windshield wipers; 20" polished-aluminum wheels
- INTERIOR: Unique leather-trimmed, 10-way power, heated and cooled front bucket seats; heated unique leather-trimmed 60/40 split one-touch fold-up rear seat with folding armrest; unique leather-wrapped steering wheel with real wood insert, power tilt column and memory; unique brushed-aluminum appliqué on center panel and console; Sony AM/FM stereo/6-disc in-dash CD changer with MP3 capability and speed-compensated volume control; visors with lighted, covered vanity mirrors and Universal Garage Door Opener; front flow-through console with unique leather-trimmed lid; unique scuff plates and instrument cluster face; Reverse Sensing System; Rear View Camera; Ambient Lighting



SVT RAPTOR

See fordvehicles.com for standard and optional features.

AVAILABILITY

CAB: SuperCab
ENGINE: 5.4L 3-valve V8 FFV ■ 6.2L 2-valve V8¹

DRIVETRAIN: 4x4

¹Available Winter 2010.



FORD HARLEY-DAVIDSON™ F-150

See fordvehicles.com for standard and optional features.

AVAILABILITY

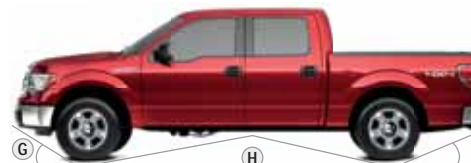
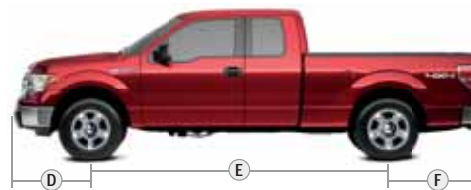
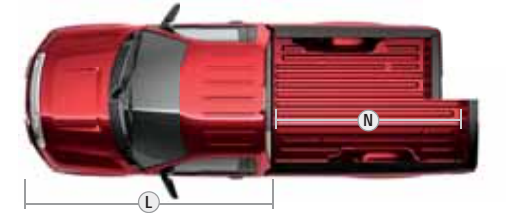
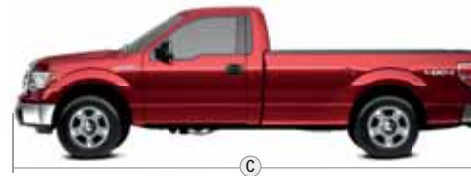
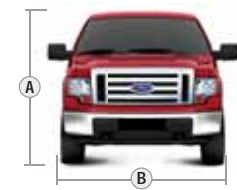
CAB: SuperCrew
ENGINE: 5.4L 3-valve V8 FFV
DRIVETRAIN: 4x2 ■ AWD

Vehicles shown with optional equipment.

DIMENSIONS

| | REGULAR CAB 4x2/4x4 | SUPERCAB 4x2/4x4 | SUPERCREW 4x2/4x4 | SVT RAPTOR SUPERCAB 4x4 |
|--------------------------------|------------------------|---------------------|----------------------|-------------------------------|
| EXTERIOR | | | | |
| A. Overall height | | | | |
| 5.5' box | — | — | 74.3"/76.2" | 78.4" |
| 6.5' box | 74.6"/76.0" | 71.5"/75.9" | 74.3"/76.4" | — |
| 8' box | 76.2"/75.8" | 75.9"/76.7" | — | — |
| B. Overall width | | | | |
| excluding mirrors | 78.9" | 78.9" | 78.9" | 86.3" |
| including mirrors | 97.0" | 97.0" | 97.0" | 97.0" |
| mirrors folded | 83.6" | 83.6" | 83.6" | 83.6" |
| C. Overall length | | | | |
| 5.5' box | — | — | 231.7" | 220.9" |
| 6.5' box | 213.1" | 231.7" | 243.7" | — |
| 8' box | 231.7" | 250.3" | — | — |
| D. Overhang — Front | 38.5" | 38.5" | 38.5" | 38.4" |
| E. Wheelbase | | | | |
| 5.5' box | — | — | 144.4" | 133.3" |
| 6.5' box | 125.8" | 144.5" | 156.6" | — |
| 8' box | 144.5" | 163.2" | — | — |
| F. Overhang — Rear | | | | |
| 5.5' box | — | — | 48.8" | 49.3" |
| 6.5' box | 48.8" | 48.8" | 48.7" | — |
| 8' box | 48.6" | 48.6" | — | — |
| G. Angle of approach | | | | |
| 5.5' box | — | — | 21.2°/25.0° | 30.0° |
| 6.5' box | 22.2°/24.3° | 21.1°/23.7° | 22.4°/25.5° | — |
| 8' box | 24.2°/23.4° | 25.5°/25.2° | — | — |
| H. Ramp breakover angle | | | | |
| 5.5' box | — | — | 15.2°/18.6° | 20.8° |
| 6.5' box | 17.7°/19.9° | 15.7°/18.0° | 14.5°/18.6° | — |
| 8' box | 19.3°/18.3° | 17.3°/18.7° | — | — |
| I. Angle of departure | | | | |
| 5.5' box | — | — | 17.7°/20.4° | 22.7° |
| 6.5' box | 18.8°/21.0° | 18.8°/20.7° | 18.1°/20.7° | — |
| 8' box | 21.9°/21.6° | 21.1°/22.1° | — | — |
| J. Ground clearance | | | | |
| 5.5' box | — | — | 7.8"/9.0" | 11.2" |
| 6.5' box | 8.6"/8.8" | 8.2"/8.7" | 8.3"/9.9" | — |
| 8' box | 9.9"/8.8" | 9.4"/10.0" | — | — |
| K. Loadfloor height | | | | |
| 5.5' box | — | — | 32.2"/34.2" | 36.4" |
| 6.5' box | 33.0"/34.8" | 33.2"/34.6" | 32.4"/34.6" | — |
| 8' box | 35.7"/35.4" | 34.9"/35.7" | — | — |
| L. Cab length | 126.4" | 145.0" | 156.7" | 145.2" |
| INTERIOR | | | | |
| 1st Row | | | | |
| Head room | 41.0" | 41.0" | 41.0" | 41.0" |
| Shoulder room | 66.6" | 66.6" | 65.9" | 65.9" |
| Hip room | 60.5" | 60.5" | 60.5" | 60.5" |
| Leg room | 41.4" | 41.4" | 41.4" | 41.4" |
| 2nd Row | | | | |
| Head room | — | 39.7" | 40.3" | 39.7" |
| Shoulder room | — | 66.8" | 65.6" | 65.7" |
| Hip room | — | 66.6" | 64.6" | 65.4" |
| Leg room | — | 33.4" | 43.5" | 33.4" |

| CARGO AREA | 5.5' BOX | 6.5' BOX | 8' BOX |
|---------------------------|-------------|-------------|-----------|
| Volume (cu. ft.) | 55.5 | 65.5 | 81.2 |
| M. Inside height | 22.4" | 22.4" | 22.4" |
| N. Length at floor | 67.0" | 78.8" | 97.4" |
| O. Width at wheelhouse | 50.0" | 50.0" | 50.0" |
| P. Maximum width at floor | 65.2" | 65.2" | 65.2" |





STANDARD FEATURES

MECHANICAL

90,000-mile tune-up interval¹
 Easy Fuel™ capless fuel filler
 Electronic Brakeforce Distribution (EBD)
 Fail-safe engine cooling system
 Gas-pressurized twin-tube shock absorbers
 Hood-open assist mechanisms
 Lightweight aluminum hood
 Maintenance-free 72-amp-hr, 750-CCA battery with battery saver
 Power 4-wheel vented-disc brakes with Anti-lock Brake System (ABS)
 Power rack-and-pinion steering
 Spare tire with underframe winch with safety catch
 Stabilizer bar – Front
 Stainless steel exhaust system (major components)
 Suspension – Front: long-spindle, double-wishbone coil-over-shock;
 rear: leaf springs
 Tire Pressure Monitoring System (excludes spare)
 Trailer tow – 4-pin connector

SAFETY/SECURITY

Personal Safety System™ for driver and right-front passenger includes dual-stage front airbags²; safety belt pretensioners, safety belt energy-management retractors, safety belt usage sensors, driver-seat position sensor, crash severity sensor, restraint control module and Front-Passenger Sensing System³
 Safety Canopy® System with side-curtain airbags² for all rows and rollover sensor
 Front-seat side airbags²
 AdvanceTrac® with RSC® (Roll Stability Control™)
 Alert chimes – Headlamps-on, key-in-ignition and safety belt
 Belt-Minder® safety belt reminder – Driver and right-front-passenger
 Brake/shift interlock
 Fuel pump inertia shutoff switch
 LATCH – Lower anchors and tether anchors for child-safety seats
 Safety belts – 3-point for all front-outboard-seating positions, all rear seat positions and Regular Cab front-center position
 Safety belt – 2-point front-center (SuperCab and SuperCrew)
 Securilock® passive anti-theft ignition system
 Side-intrusion door beams
 SOS Post-Crash Alert System™⁴
 Trailer Sway Control

¹Under normal driving conditions with routine fluid and filter changes.

²Always wear your safety belt and, in SuperCab and SuperCrew models, always secure children in the rear seat.

³Right-front-passenger seat only.

⁴SOS hardware may become damaged or the battery may lose power in a crash, which could prevent operation. Not all crashes will activate an airbag or safety belt pretensioner.

INTERIOR

Air conditioning – Manual
 Assist/grab handle – Right-front-passenger
 Assist/grab handles – Rear outboard positions (SuperCrew)
 Coat hooks – 2
 Cupholders – Front; 2 deployable under center seat (4x2 and ESOF 4x4 only) and 1 in each front-door map pocket
 Display center
 Front dome or map lights
 Front-door map pockets
 Gauges – Tachometer, fuel, voltmeter, oil pressure, engine coolant temperature, speedometer and odometer
 Glove compartment
 Horn – Dual-note
 Power points – Front (all models) and rear (in SuperCab and SuperCrew models)
 Tilt steering wheel

EXTERIOR

Cargo box lamp – Integrated into center high-mounted stop lamp
 Cargo box tie-downs – 4
 Headlamps – Aerodynamic clear-lens dual-beam halogen
 Stake-bed pockets
 Tailgate – Removable with key lock and Tailgate Assist
 Tow hooks – 2 in front (4x4 only)
 Windshield wipers – Intermittent

SVT RAPTOR FEATURES & OPTIONS

See fordvehicles.com for standard equipment

OPTIONAL EQUIPMENT

6.2L 2-valve V8 with 6-speed automatic overdrive and Tow/Haul Mode (available Winter 2010)
 Integrated Trailer Brake Controller
 Navigation System with Sony® audio (req. RAPTOR Luxury Package)
 Power moonroof
 Rear View Camera
 Stowable bed extender
 Tailgate Step

OPTIONAL PACKAGES

Exterior Graphics Package

Interior Color Accent Package – Includes Orange-accent leather-trimmed front seats and rear vinyl seats, and Orange-accent instrument panel center stack appliqué, door panel inserts and center console

RAPTOR Luxury Package – Includes unique heated front bucket seats with 10-way power; power-adjustable pedals; Dual-zone Electronic Automatic Temperature Control; Sony 6-disc in-dash CD changer; power, heated sideview mirrors with integrated turn-signal indicators and auto-dimming driver-side feature; and memory system for power driver seat, pedals and sideview mirrors

New Vehicle Limited Warranty. We want your Ford F-150 ownership experience to be the best it can be. So under this warranty, your new vehicle comes with 3-year/36,000-mile Bumper-to-Bumper Coverage, 5-year/60,000-mile Powertrain Warranty Coverage, 5-year/50,000-mile Safety Restraint Coverage, and 5-year/unlimited-mile Corrosion (Perforation) Coverage – all with no deductible. Please ask your Ford Dealer for a copy of this limited warranty.

Roadside Assistance. Covers your vehicle for 5 years or 60,000 miles, so you have the security of knowing that help may be only a phone call away should you run out of fuel, lock yourself out of the vehicle, or need towing. Your Ford Dealer can provide complete details on all of these advantages.

Ford Credit. Get the ride you want. Whether you plan to lease or finance, you'll find the choices that are right for you at Ford Credit. Ask your Ford Dealer for details or check us out at fordcredit.com.

Ford Extended Service Plan. For a purchase or lease, the Ford Extended Service Plan (ESP) gives you "Peace-of-Mind" protection designed to cover key vehicle components and protect you from the cost of unexpected repairs. Ask your dealer for a Ford ESP, the only service contract backed exclusively by Ford and honored at all Ford Lincoln Mercury dealerships.

Insurance Services. Get Ford Motor Company quality in your auto insurance. Our program offers industry-leading benefits and competitive rates. Call 1-877-367-3847, or visit us at fordvip.com for a no-obligation quote. Insurance offered by American Road Services Company (in CA, American Road Insurance Agency), a licensed agency and subsidiary of Ford Motor Company.

Comparisons based on 2009 competitive models (Class is Full-Size Pickups under 8500 lbs. GVWR), publicly available information and Ford certification data at time of release. Some features discussed may be optional. Vehicles shown may contain optional equipment. Features shown may be offered only in combination with other options or subject to additional ordering requirements or limitations. Dimensions and capability ratings shown may vary due to optional features and/or production variability. Following release of the PDF, certain changes in standard equipment, options and the like, or product delays may have occurred which would not be included in these pages. Your Ford Dealer is the best source for up-to-date information. Ford Division reserves the right to change product specifications at any time without incurring obligations.

SIRIUS is a registered trademark of SIRIUS XM Radio Inc. Subscriptions governed by SIRIUS Terms and Conditions at sirius.com/serviceterms. Service available in the 48 contiguous states and Washington, D.C.

Master Lock is a registered trademark of Master Lock Company LLC.

Sony is a registered trademark of Sony Corporation.

Windows is a registered trademark of Microsoft Corporation.

FEATURES & OPTIONS

| | | | | | XL |
|---|---|---|---|---|--|
| | | | | | STX |
| | | | | | XLT |
| | | | | | FX4 |
| | | | | | LARIAT |
| | | | | | MECHANICAL |
| ● | ● | ○ | – | – | 4.6L EFI 2-valve V8 with 4-speed automatic overdrive |
| ● | ● | ○ | – | – | 4.6L EFI 3-valve V8 with 6-speed automatic overdrive with Tow/Haul Mode (n/a with 4x2 Regular Cab 126" WB) |
| ● | – | ○ | ● | ● | 5.4L EFI SOHC 3-valve V8 FFV with electronic 6-speed automatic overdrive with Tow/Haul Mode (n/a with 4x2 Regular Cab 126" WB) |
| ● | ● | ○ | – | ● | Axle – Non-limited-slip rear (3.15, 3.31, 3.55 or 3.73 ratio) ¹ |
| ○ | ○ | ○ | – | ○ | Axle – Limited-slip rear (3.55 or 3.73 ratio) ¹ |
| – | – | – | ● | – | Axle – 3.73 electronic-locking rear |
| ● | ● | ● | – | ● | Fuel tank – 26-gallon capacity |
| ● | ● | ● | ● | ● | Fuel tank – 36-gallon capacity |
| | | | | | WHEELS & TIRES |
| ● | – | – | – | – | 17" grey styled-steel wheels |
| – | ● | – | – | – | 17" machined-aluminum wheels |
| – | – | ● | – | – | 17" machined-aluminum wheels with painted accents |
| ● | – | ● | – | – | 17" 7-lug steel wheels (req. Heavy-Duty Payload Package; Regular Cab and SuperCab only) |
| – | – | – | ● | – | 18" 7-spoke bright-aluminum wheels |
| – | – | ● | – | ● | 18" chrome-clad aluminum wheels (incl. with XLT and LARIAT Chrome Packages) |
| – | ● | – | ● | – | 18" machined cast-aluminum wheels (incl. with STX Décor Package) |
| – | – | ● | – | – | 18" machined-aluminum wheels with painted accents (incl. with FX2 Sport Package) |
| – | – | – | – | ● | 18" 7-spoke aluminum wheels with Pueblo Gold painted accents (incl. with KING RANCH® Package) |
| – | – | ● | – | ● | 20" chrome-clad aluminum wheels (req. XLT or LARIAT Chrome Package and 5.4L V8) |
| – | – | – | ○ | ○ | 20" 6-spoke machined-aluminum wheels – Includes sport-tuned shocks (n/a with Regular Cab 126" WB or SuperCab 133" WB) |
| – | – | ● | – | – | 20" 6-spoke premium painted-aluminum wheels (req. FX2 Sport Package and 5.4L engine) |
| – | – | – | – | ● | 20" polished-aluminum wheels (incl. with PLATINUM Package) |
| – | – | – | – | ○ | 20" premium painted-aluminum wheels (req. KING RANCH® Package) |
| – | – | – | – | ● | 22" polished forged-aluminum wheels with painted accents (incl. with Ford Harley-Davidson™ Package) |
| ● | – | ● | – | – | P235/70R17 all-season BSW tires (5) – 4x2 (Regular Cab and SuperCab) |
| ● | – | ● | – | – | P235/75R17 all-terrain BSW tires (5) – 4x4 (Regular Cab and SuperCab) |
| ● | ● | ● | – | – | P255/65R17 all-season OWL tires (4) – 4x2 (optional on XL and XLT Regular Cab and SuperCab; standard on SuperCrew) |
| ● | ● | ● | – | – | P265/70R17 all-terrain OWL tires (4) – 4x4 (optional on XL and XLT Regular Cab and SuperCab; standard on SuperCrew) |
| ● | – | ● | – | – | LT245/75R17E all-terrain BSW tires (5) – 4x2/4x4 (req. Heavy-Duty Payload and Max. Trailer Tow Packages; Regular Cab and SuperCab) |

| | | | | | XL |
|---|---|---|---|---|---|
| | | | | | STX |
| | | | | | XLT |
| | | | | | FX4 |
| | | | | | LARIAT |
| | | | | | WHEELS & TIRES (continued) |
| – | ● | ○ | – | ● | P265/60R18 all-season OWL tires (5) – 4x2 (incl. with FX2 Sport, STX Décor and XLT Chrome Packages) |
| – | ● | ● | ● | ● | P275/65R18 all-terrain OWL tires (4) – 4x4 (incl. with STX Décor and XLT Chrome Packages) |
| – | – | ○ | ○ | ○ | LT275/65R18C all-terrain OWL tires (4) – 4x4 (XLT req. XLT Chrome Package) |
| – | – | ○ | – | ○ | P275/55R20 all-season OWL tires (4) – 4x2 (SuperCab and SuperCrew; XLT req. 5.4L V8 and either XLT Chrome Package or FX2 Sport Package) |
| – | – | ○ | ○ | ○ | P275/55R20 all-terrain OWL tires (4) – 4x4 (SuperCab and SuperCrew; XLT req. XLT Chrome Package and 5.4L V8) |
| – | – | – | – | ● | P275/45R22 all-season BSW tires (4) – (V-rated; incl. with Ford Harley-Davidson™ Package) |
| | | | | | 4x4-ONLY FEATURES |
| ● | ● | ○ | – | – | Mechanical Shift-On-the-Fly (MSOF) transfer case (Regular Cab and SuperCab) |
| ● | ● | ○ | ● | ● | Electronic Shift-On-the-Fly (ESOF) transfer case (standard on SuperCrew; req. with 4.6L 3-valve and 5.4L 3-valve) |
| ○ | – | ○ | ● | ○ | Skid plates – Steel plates for front crossmember and transfer case; composite plate for fuel tank |
| | | | | | EXTERIOR |
| ○ | – | ○ | – | – | 8' box – Regular Cab (145" WB) |
| ● | – | ● | – | – | 8' box – SuperCab with Heavy-Duty Payload Package (163" WB) |
| ○ | ○ | ○ | – | – | 6.5' box – Regular Cab (126" WB) |
| ○ | ○ | ○ | ○ | ○ | 6.5' box – SuperCab (145" WB) |
| ○ | – | ○ | ○ | ○ | 6.5' box – SuperCrew (157" WB) |
| ○ | – | ○ | ○ | ○ | 5.5' box – SuperCrew (145" WB) |
| ● | ● | ● | ● | ● | Box Side Steps (6.5' or 8' box only) |
| ○ | ○ | ○ | ○ | ○ | Cargo Management System – Includes 2 dual-channel side rails and 4 tie-down cleats (6.5' box) |
| ○ | ○ | ○ | ○ | ○ | Cargo Management pickup box storage bins – 2 (req. Cargo Management System) |
| ○ | ● | ● | ● | ● | Fog lamps (XL req. XL Décor Group) |
| ○ | ○ | ○ | ○ | ○ | Integrated Trailer Brake Controller (req. Trailer Tow or Max. Trailer Tow Package; XL with XL Décor Group req. fog lamps; STX and XLT req. fog lamps) |
| – | – | ○ | ○ | ● | Rear View Camera – Includes camera mounted in tailgate (req. Reverse Sensing System) |
| ● | – | ● | ● | ● | Remote keyless entry with 2 fobs; illuminated entry with panic button (XL SuperCrew only) |
| – | – | ○ | ○ | ● | Reverse Sensing System (req. Trailer Tow or Max. Trailer Tow Package) |
| ● | – | ● | – | – | Running boards – Black platform (XL SuperCrew; XLT SuperCab and SuperCrew only) |
| – | ● | ○ | ○ | ○ | Running boards – 4" polished stainless steel tubular |

| | | | | | XL |
|---|---|---|---|---|--|
| | | | | | STX |
| | | | | | XLT |
| | | | | | FX4 |
| | | | | | LARIAT |
| | | | | | EXTERIOR (continued) |
| ○ | – | – | – | – | Running boards – 4" Black tubular (XL SuperCab and SuperCrew only) |
| – | ● | ○ | ○ | ○ | Running boards – 5" chrome tubular (STX SuperCab only; XLT SuperCab/SuperCrew) |
| – | – | ○ | ● | ● | SecuriCode™ keyless-entry keypad – Driver door-mounted |
| ● | ● | – | – | – | Sideview mirrors – Manual (XL Regular Cab and SuperCab only) |
| ● | – | ● | ● | – | Sideview mirrors – Power (XL SuperCrew only) |
| – | – | ● | ● | – | Sideview mirrors – Power, heated with integrated turn-signal indicators and auto-dimming driver-side feature |
| – | – | – | ● | ● | Sideview mirrors – Power, heated with memory, integrated turn-signal indicators, chrome caps and auto-dimming driver-side feature (incl. with FX4 Luxury Package) |
| – | – | – | – | ● | Sideview mirrors – Power, heated with memory, integrated turn-signal indicators, chrome caps and auto-dimming driver-side feature (incl. with LARIAT Chrome Package) |
| – | – | – | – | ● | Sideview mirrors – Power-fold, heated with memory, integrated turn-signal indicators, chrome caps, security approach lamps and auto-dimming driver-side feature (req. KING RANCH® or PLATINUM Package) |
| ● | – | – | – | – | Sideview mirrors – Manual glass/telescoping trailer tow (req. Max. Trailer Tow Package; XL Regular Cab and SuperCab only) |
| ● | – | ○ | ○ | – | Sideview mirrors – Power, heated glass/manual telescoping trailer tow with integrated turn-signal indicators and security approach lamps (req. Max. Trailer Tow Package; XL req. Power Equipment Group) |
| – | – | – | ○ | ○ | Sideview mirrors – Power, heated glass/manual telescoping trailer tow with memory, integrated turn-signal indicators, body-color caps and security approach lamps (FX4 req. FX4 Luxury Package; req. Max. Trailer Tow Package) |
| – | – | – | – | ○ | Sideview mirrors – Power, heated glass/manual telescoping trailer tow with memory, integrated turn-signal indicators, chrome caps and security approach lamps (req. KING RANCH®, PLATINUM or LARIAT Chrome Package; req. Max. Trailer Tow Package) |
| ○ | ○ | ○ | ○ | ○ | Stowable bed extender |
| ○ | ○ | ○ | ○ | ○ | Tailgate Step |
| – | – | ○ | – | ● | Two-tone paint (incl. with KING RANCH® Package; n/a with PLATINUM Package or Ford Harley-Davidson™ Package) |
| | | | | | SEATING |
| ● | – | – | – | – | Front vinyl 40/20/40 split seat (optional with XL Décor Group) |
| ○ | ● | – | – | – | Front cloth 40/20/40 split seat with driver manual lumbar (incl. with XL Décor Group) |
| – | – | ● | – | – | Front premium cloth 40/20/40 split seat with driver manual lumbar |
| – | – | ● | ● | – | Front sport cloth bucket seats with dual manual lumbar and flow-through console including rear air vents and floor shifter (XLT req. FX2 Sport Package) |

● Standard ● Select Availability ○ Optional – Not Available

¹See dealer for availability and restrictions.

FEATURES & OPTIONS

| XL | | | | | |
|---------------------|---|---|---|---|--|
| STX | | | | | |
| XLT | | | | | |
| FX4 | | | | | |
| LARIAT | | | | | |
| SEATING (continued) | | | | | |
| - | - | - | - | ● | Front leather-trimmed 40/20/40 split seat with driver-side memory, and 10-way power heated driver and right-front-passenger seats (10-way seat includes lumbar) |
| - | ○ | - | - | - | Front cloth bucket seats with center console and driver manual lumbar (SuperCab; 4x4 req. ESOF) |
| - | - | ○ | - | - | Front premium cloth bucket seats with driver manual lumbar and center console (SuperCab and SuperCrew; SuperCab 4x4 req. ESOF) |
| - | - | - | ○ | - | Front sport leather-trimmed bucket seats with heat, dual manual lumbar and flow-through console including rear air vents and floor shifter (incl. with FX4 Luxury Package) |
| - | - | - | - | ○ | Front leather-trimmed bucket seats, 10-way power, heated and cooled with driver-side memory and flow-through console including rear air vents (incl. with KING RANCH® and PLATINUM Packages) |
| - | - | ● | ● | - | 6-way power driver seat (SuperCab and SuperCrew; XLT req. Convenience Package) |
| ● | - | - | - | - | Rear vinyl 60/40 split flip-up seat (SuperCab and SuperCrew) |
| - | - | ● | ● | ● | Rear premium vinyl 60/40 split flip-up seat (SuperCab and FX4 SuperCrew) |
| ● | ● | ● | ● | - | Rear cloth 60/40 split flip-up seat (SuperCab; one-touch flip-up on SuperCrew) |
| - | - | - | ● | ● | Rear leather-trimmed 60/40 split one-touch flip-up seat with folding armrest (SuperCrew; incl. with FX4 Luxury Package) |
| INTERIOR | | | | | |
| ● | ● | ● | ● | - | Air conditioning – Manual |
| - | - | - | ● | ● | Air conditioning – Dual-zone Electronic Automatic Temperature Control (incl. with FX4 Luxury Package) |
| ● | - | - | - | - | AM/FM stereo with clock |
| ● | ● | ● | ● | ● | AM/FM stereo/single-CD player with MP3 capability, auxiliary audio input jack, speed-compensated volume control, information display with compass, and clock (incl. with XL Plus Package) |
| - | - | - | ● | ● | AM/FM stereo/6-disc in-dash CD changer with MP3 capability, auxiliary audio input jack, speed-compensated volume control and information display with compass (incl. with FX4 Plus Package, FX4 Luxury Package and LARIAT Plus Package) |
| - | - | - | ○ | ○ | Sony® AM/FM stereo/6-disc in-dash CD changer with MP3 capability, auxiliary audio input jack, speed-compensated volume control and information display with compass |
| - | - | - | ● | ○ | Navigation System with 8" in-dash screen and Sony single-CD/DVD player with MP3, DVD-Audio and DVD-Video capabilities; internal hard drive for map and points of interest storage and nearly 10-GB jukebox; SIRIUS Travel Link™ (incl. traffic, weather, fuel information and more) capability; includes subwoofer, speed-compensated volume control, steering wheel-mounted audio and Navigation System controls and auto-dimming rearview mirror with microphone (FX4 req. FX4 Luxury Package) |

| XL | | | | | |
|----------------------|---|---|---|---|---|
| STX | | | | | |
| XLT | | | | | |
| FX4 | | | | | |
| LARIAT | | | | | |
| INTERIOR (continued) | | | | | |
| - | ○ | ○ | ○ | ● | SIRIUS® Satellite Radio – Includes integrated satellite receiver, roof-mounted antenna and 6-month trial subscription (Regular Cab and SuperCab 4x4 req. ESOF; n/a with 4.6L 2-valve 4x4) |
| - | ● | ○ | ○ | ● | Ford SYNC® with 911 Assist™ plus Traffic, Directions and Information – Includes steering wheel-mounted audio/SYNC controls and auto-dimming rearview mirror with microphone (req. cruise control and audio system with CD player) |
| ● | ● | ● | ● | ● | Cruise control – Steering wheel-mounted |
| ● | ● | ● | - | - | Cupholders – Floor consolette (MSOF 4x4 only) |
| ● | ● | ● | ● | ● | Cupholders – Rear passenger (SuperCab and SuperCrew) |
| ● | - | ● | ● | ● | Fade-to-off interior lighting (XL SuperCrew only) |
| ● | ● | ○ | - | - | Floor covering – Vinyl |
| ○ | ○ | ● | - | ● | Floor covering – Color-coordinated carpet with carpeted front and rear floor mats |
| - | - | - | ● | - | Floor covering – Color-coordinated carpet with Black rubber off-road front and rear floor mats |
| ○ | ○ | ○ | - | ○ | Floor mat – Full coverage rubber (XL and STX req. carpet) |
| ● | ● | ● | ● | ● | Interior rear dome light (Regular Cab and SuperCab) |
| ● | - | ● | ● | ● | Interior dome light with front map lights (SuperCrew) |
| - | - | ● | ● | ● | Interior front map lights (XLT SuperCab and SuperCrew only) |
| - | - | - | - | ● | Message center/trip computer – Includes display center features plus distance-to-empty, average fuel economy, multiple language display choices and temperature readout options |
| ● | ● | ● | ● | ● | MyKey™ owner controls feature (incl. on XL Plus Package) |
| - | - | ● | ● | ● | Outside temperature and compass display |
| ● | - | ● | ● | ● | Overhead console with 2 storage bins and map lights |
| - | - | ● | ● | ● | Power accessory delay |
| - | - | ● | ● | - | Power-adjustable pedals |
| - | - | - | - | ● | Power-adjustable pedals with memory |
| ● | ● | ● | ● | ● | Power door locks with autolock (XL SuperCrew only) |
| ● | ○ | ● | ● | ● | Power Equipment Group – Includes power door locks with key fob, windows and sideview mirrors; illuminated entry and autolamp (standard XL SuperCrew) |
| - | - | - | ○ | ○ | Power moonroof – Includes one-touch-open/-close and overhead console with single storage bin |
| ● | ● | - | - | - | Rear window – Fixed with solar-tinted glass |
| - | - | ● | - | - | Rear window – Fixed with privacy glass |
| - | ○ | ○ | ● | - | Rear window – Fixed with privacy glass and defroster |
| - | ○ | ● | - | - | Rear window – Manual-sliding with privacy glass (n/a with defroster) |
| - | - | ● | ○ | ● | Rear window – Power-sliding with privacy glass and defroster (req. XLT Convenience Package on XLT SuperCab and SuperCrew) |
| ● | ● | - | - | - | Steering wheel – Urethane, Black |

| XL | | | | | |
|----------------------|---|---|---|---|---|
| STX | | | | | |
| XLT | | | | | |
| FX4 | | | | | |
| LARIAT | | | | | |
| INTERIOR (continued) | | | | | |
| - | - | ● | - | - | Steering wheel – Urethane, color-coordinated |
| - | - | - | ● | - | Steering wheel – Leather-wrapped, Black |
| - | - | - | - | ● | Steering wheel – Leather-wrapped, color-coordinated |
| - | ● | ● | ● | ● | Steering wheel-mounted audio controls |
| ● | ● | - | - | - | Windows – 1st-row manual (Regular Cab and SuperCab) |
| ● | ● | ● | ● | ● | Windows – 1st-row power with one-touch-down driver-window feature (XL SuperCrew) |
| ● | ● | - | - | - | Windows – 2nd-row fixed (SuperCab) |
| ● | ● | ● | ● | ● | Windows – 2nd-row power (SuperCab and SuperCrew; XL SuperCrew only) |
| PACKAGES | | | | | |
| ● | - | ● | - | - | Heavy-Duty Payload Package – Increases GVWR to 8200 lbs. for improved payload and towing; 17" 7-lug steel wheels; LT245/75R17E all-terrain BSW tires; heavy-duty shock absorbers and frame; upgraded springs and radiator; auxiliary transmission oil cooler; rear axle with 9.75" gear set and 3.73 limited-slip gear ratio (Regular Cab and SuperCab with 5.4L V8 only; req. Max. Trailer Tow Package) |
| ● | - | ● | ● | ○ | Max. Trailer Tow Package (req. for towing over 5000 lbs.) – Includes Class IV trailer hitch receiver; 7-pin wiring harness; upgraded radiator; auxiliary transmission oil cooler; Trailer Brake Controller; upgraded rear bumper; upgraded rear springs; heavy-duty front eye bushing; and trailer tow mirrors (XL Regular Cab and SuperCab; restrictions apply – see dealer for details) |
| ● | - | ● | - | - | Snow Plow Prep Package – Available with 4x4 only (req. Heavy-Duty Payload Package) and includes upgraded springs (Regular Cab and SuperCab; restrictions apply – see dealer for details) |
| ○ | ○ | ○ | ● | ● | Trailer Tow Package (req. for towing over 5000 lbs.) – Includes Class IV trailer hitch receiver; 7-pin wiring harness; upgraded radiator; and auxiliary transmission oil cooler |
| ○ | - | - | - | - | XL Décor Group – Includes chrome front/rear bumpers and cloth 40/20/40 split front seat with driver manual lumbar |
| ○ | - | - | - | - | XL Plus Package – Includes AM/FM stereo with single-CD player; auxiliary audio input jack; cruise control; and MyKey |
| - | ○ | - | - | - | STX Décor Package – Includes 18" machined cast-aluminum wheels; P265/60R18 all-season OWL tires (4x2) or P275/65R18 all-terrain OWL tires (4x4); and 5" chrome tubular running boards (SuperCab) or 4" polished stainless steel tubular running boards (Regular Cab) |
| - | ○ | - | - | - | STX Plus Package – Includes fog lamps and cruise control |

● Standard ● Select Availability ○ Optional – Not Available

FEATURES & OPTIONS

| XL | | | | | |
|-----------------------------|---|---|---|---|---|
| STX | | | | | |
| XLT | | | | | |
| FX4 | | | | | |
| LARIAT | | | | | |
| PACKAGES (continued) | | | | | |
| — | — | ● | — | — | XLT Chrome Package — Includes chrome billet-style grille; chrome front tow hooks (4x4); 18" chrome-clad aluminum wheels; P265/60R18 all-season OWL tires (4x2) or P275/65R18 all-terrain OWL tires (4x4); chrome door pulls with black bezels; 5" chrome tubular running boards; chrome exhaust tip; and color-coordinated, leather-wrapped steering wheel (SuperCab and SuperCrew) |
| — | — | ○ | — | — | XLT Convenience Package — Includes power, heated sideview mirrors with integrated turn-signal indicators and auto-dimming driver-side feature; auto-dimming rearview mirror; fog lamps; 6-way power driver seat (SuperCab and SuperCrew only); and power-adjustable pedals |
| — | — | ● | — | — | FX2 Sport Package — See description on model comparison page (4x2 SuperCab and SuperCrew only) |
| — | — | — | ○ | — | FX4 Luxury Package — Includes Dual-zone Electronic Automatic Temperature Control; steering wheel with secondary audio/climate controls; heated front seats; memory driver seat; power-adjustable pedals with memory; Reverse Sensing System; body-color door handles with SecuriCode™ keyless-entry keypad; FX4 sport leather-trimmed, 10-way power front bucket seats; front flow-through console and floor shifter; auto-dimming rearview mirror with microphone; power, heated sideview mirrors with memory and body-color caps; AM/FM stereo/6-disc in-dash CD changer; power-sliding rear privacy window with defrost; and SYNC® (SuperCab and SuperCrew) |
| — | — | — | ○ | — | FX4 Plus Package — Includes AM/FM stereo/6-disc in-dash CD changer with MP3 capability; auxiliary audio input jack; power, heated sideview mirrors with integrated turn-signal indicators and auto-dimming driver-side feature; auto-dimming rearview mirror; power-adjustable pedals; and Reverse Sensing System |
| — | — | — | — | ○ | LARIAT Chrome Package — Includes chrome mesh grille insert; 6" chrome angular running boards; body-color door handles with chrome straps and SecuriCode keyless-entry keypad; 18" chrome-clad aluminum wheels; chrome exhaust tip; chrome front tow hooks (4x4); and power, heated sideview mirrors with memory, integrated turn-signal indicators, chrome caps and auto-dimming driver-side feature |
| — | — | — | — | ○ | LARIAT Plus Package — Includes AM/FM stereo/6-disc in-dash CD changer with MP3 capability; auxiliary audio input jack; Universal Garage Door Opener; Reverse Sensing System; and Rear View Camera |
| — | — | — | — | ● | Ford Harley-Davidson™ Package — See description on fordvehicles.com (SuperCrew only) |
| — | — | — | — | ● | KING RANCH® Package — See description on model comparison page (SuperCrew only) |
| — | — | — | — | ● | PLATINUM Package — See description on model comparison page (SuperCrew only) |

| XL | | | | | |
|---|---|---|---|---|--|
| STX | | | | | |
| XLT | | | | | |
| FX4 | | | | | |
| LARIAT | | | | | |
| CUSTOM ACCESSORIES/PRE-INSTALLED | | | | | |
| ○ | ○ | ○ | ○ | ○ | Power Code™ Remote Start System (req. Power Equipment Group; n/a with PLATINUM Package, SVT RAPTOR or Ford Harley-Davidson™ Package) |
| ○ | ○ | ○ | ○ | ○ | Chrome bug shield (n/a with PLATINUM Package, SVT RAPTOR or Ford Harley-Davidson™ Package) |
| FORD WORK SOLUTIONS™ | | | | | |
| ○ | ○ | ○ | — | — | In-dash computer featuring Windows® CE operating system with touch screen (n/a with SYNC or SIRIUS Satellite Radio; deletes standard radio) |
| ○ | ○ | ○ | — | — | Crew Chief™ (n/a with SYNC or in-dash computer) |
| ○ | ○ | ○ | — | — | Tool Link™ (req. in-dash computer; n/a with Cargo Management System, SYNC, or satellite radio) |
| ○ | ○ | ○ | ○ | ○ | Cable Lock by Master Lock® |
| 3RD-PARTY UPFIT PACKAGE | | | | | |
| ● | — | ● | — | — | MidBox Prep Package — Includes 145" WB Regular Cab with 5.5' box or 163" WB SuperCab with 5.5' box; via ship-thru process, truck is upfitted with MidBox between cab and pickup box |

● Standard ● Select Availability ○ Optional — Not Available

PAYLOAD PACKAGES

| REGULAR CAB 4x2 | | | |
|-----------------|--------------|---------------------|-------------|
| WHEELBASE | ENGINE | MAX. PAYLOAD (LBS.) | GVWR (LBS.) |
| 126" | 4.6L 2-valve | 1710 | 6450 |
| 145" | 4.6L 2-valve | 1890 | 6750 |
| | 4.6L 3-valve | 1980 | 6850 |
| | 5.4L 3-valve | 2060 | 7050 |
| | 5.4L 3-valve | 3030 ¹ | 8200 |

| SUPERCAB 4x2 | | | |
|--------------|--------------|-------------------|------|
| 145" | 4.6L 2-valve | 1600 | 6700 |
| | 4.6L 3-valve | 1680 | 6800 |
| | 5.4L 3-valve | 1800 | 7050 |
| | 5.4L 3-valve | 2030 ² | 7500 |
| 163" | 5.4L 3-valve | 2660 ¹ | 8200 |

| SUPERCREW 4x2 | | | |
|---------------|--------------|-------------------|------|
| 145" | 4.6L 2-valve | 1610 | 6800 |
| | 4.6L 3-valve | 1680 | 6900 |
| | 5.4L 3-valve | 1750 | 7100 |
| | 5.4L 3-valve | 1870 ² | 7350 |
| 157" | 4.6L 2-valve | 1470 | 6800 |
| | 4.6L 3-valve | 1540 | 6900 |
| | 5.4L 3-valve | 1670 | 7100 |
| | 5.4L 3-valve | 1990 ² | 7550 |

| REGULAR CAB 4x4 | | | |
|-----------------|--------------|-------------------|------|
| 126" | 4.6L 2-valve | 1640 | 6650 |
| | 4.6L 3-valve | 1710 | 6750 |
| | 5.4L 3-valve | 1660 | 6800 |
| 145" | 4.6L 2-valve | 1850 | 6950 |
| | 4.6L 3-valve | 1950 | 7050 |
| | 5.4L 3-valve | 1970 | 7200 |
| | 5.4L 3-valve | 2740 ¹ | 8200 |

| SUPERCAB 4x4 | | | |
|-------------------|--------------|-------------------|------|
| 133" ³ | 5.4L 3-valve | 1020 | 6950 |
| 145" | 4.6L 2-valve | 1480 | 6900 |
| | 4.6L 3-valve | 1550 | 7000 |
| | 5.4L 3-valve | 1670 | 7200 |
| | 5.4L 3-valve | 1960 ² | 7700 |
| 163" | 5.4L 3-valve | 2350 ¹ | 8200 |

| SUPERCREW 4x4 | | | |
|---------------|--------------|-------------------|------|
| 145" | 4.6L 3-valve | 1420 | 7000 |
| | 5.4L 3-valve | 1510 | 7200 |
| | 5.4L 3-valve | 1910 ² | 7675 |
| 157" | 4.6L 3-valve | 1430 | 7150 |
| | 5.4L 3-valve | 1540 | 7350 |
| | 5.4L 3-valve | 1810 ² | 7700 |

¹Requires Heavy-Duty Payload Package. ²Requires Max. Trailer Tow Package. ³SVT RAPTOR only. **Note:** All figures are subject to change.



CONVENTIONAL TOWING — Maximum Loaded Trailer Weight Ratings (lbs.)

| ENGINE | AXLE RATIO | MAX. GCWR (LBS.) | REGULAR CAB | | REGULAR CAB | | SUPERCAB | | SUPERCAB | | | SUPERCREW | | SUPERCREW | |
|--|------------|------------------|-------------|---------------------|---------------------|---------|---------------------|-------------------|---------------------|---------------------|---------|-----------|---------------------|---------------------|---------|
| | | | 4x2 | | 4x4 | | 4x2 | | 4x4 | | | 4x2 | | 4x4 | |
| | | | 126" WB | 145" WB | 126" WB | 145" WB | 145" WB | 163" WB | 133" WB | 145" WB | 163" WB | 145" WB | 157" WB | 145" WB | 157" WB |
| 4.6L 2-Valve V8 with 4-Speed Automatic | 3.55 | 10,400 | 5400 | — | — | — | — | — | — | — | — | — | — | — | — |
| | | 10,600 | — | 5500 | — | — | — | 5300 | — | — | — | — | 5200 | 5100 | — |
| | 3.73 | 10,900 | 5900 | — | 5700 | — | — | — | — | — | — | — | — | — | — |
| 4.6L 3-Valve V8 with 6-Speed Automatic | 3.31 | 11,100 | — | 6000 | — | 5800 | 5800 | — | — | 5500 | — | 5700 | 5600 | — | — |
| | | 13,100 | — | 8000 | — | — | — | — | — | — | — | — | — | — | — |
| | 3.55 | 13,500 | — | — | — | — | 8100 | — | — | — | — | 8100 | 8000 | — | — |
| | | 12,900 | — | — | 7700 | — | — | — | — | — | — | — | — | — | — |
| | | 13,100 | — | — | — | 7700 | — | — | — | — | — | — | — | — | — |
| | | 13,500 | — | — | — | — | — | — | — | 7900 | — | — | — | 7700 | 7600 |
| | 3.73 | 13,600 | — | 8400 | — | — | — | — | — | — | — | — | — | — | — |
| | | 14,900 | — | — | — | — | 9500 | — | — | — | — | 9400 | 9300 | — | — |
| | | 13,300 | — | — | 8000 | — | — | — | — | — | — | — | — | — | — |
| | | 13,600 | — | — | — | 8200 | — | — | — | — | — | — | — | — | — |
| 5.4L 3-Valve V8 with 6-Speed Automatic | 3.15 | 15,100 | — | — | — | — | — | — | — | 9400 | — | — | — | 9300 | 9200 |
| | | 13,200 | — | 8000 | — | — | — | — | — | — | — | — | — | — | — |
| | 3.31 | 14,000 | — | — | — | — | 8600 | — | — | — | — | 8500 | 8400 | — | — |
| | | 13,000 | — | — | 7700 | — | — | — | — | — | — | — | — | — | — |
| | | 13,200 | — | — | — | 7700 | — | — | — | — | — | — | — | — | — |
| | 3.55 | 14,000 | — | — | — | — | — | — | — | 8300 | — | — | — | 8100 | 8000 |
| | | 13,900 | — | — | 8600 | — | — | — | — | — | — | — | — | — | — |
| | | 15,000 | — | 9800 | — | 9500 | — | — | — | — | — | — | — | — | — |
| | | 15,200 | — | — | — | — | 9800 | — | — | — | — | — | — | — | — |
| | | 15,300 | — | — | — | — | — | — | — | — | — | 9800 | 9700 | — | — |
| | | 15,400 | — | — | — | — | — | — | — | 9700 | — | — | — | — | — |
| | 3.73 | 15,500 | — | — | — | — | — | — | — | — | — | — | — | 9600 | 9500 |
| | | 13,900 | — | — | 8600 | — | — | — | — | — | — | — | — | — | — |
| | | 15,000 | — | — | — | 9500 | — | — | — | — | — | — | — | — | — |
| | | 15,400 | — | — | — | — | — | — | — | 9700 | — | — | — | — | — |
| | | 15,500 | — | — | — | — | — | — | — | — | — | — | — | 9600 | 9500 |
| | | 16,700 | — | 11,300 ¹ | — | — | — | — | — | — | — | — | — | — | — |
| 16,900 | | — | — | — | — | 11,300 | — | — | — | — | 11,300 | — | — | — | |
| 17,000 | | — | — | — | 11,300 ¹ | — | — | — | — | — | — | 11,300 | — | — | |
| 4.10 | 17,100 | — | — | — | — | — | 11,300 ¹ | — | 11,200 ³ | 11,100 ¹ | — | — | 11,200 ³ | 11,100 ³ | |
| | 12,300 | — | — | — | — | — | — | 6000 ² | — | — | — | — | — | — | |

Note: Maximum loaded trailer weights shown. The combined weight of the towing vehicle (including hitch, passengers and cargo) and the loaded trailer must not exceed the Gross Combination Weight Rating (GCWR). Note: See RV and Trailer Towing Guide for requirements, restrictions and 5th-wheel towing.

POWERTRAINS

| ENGINE | TRANSMISSION | HORSEPOWER (hp @ rpm) | TORQUE (lb.-ft. @ rpm) | 2010 EPA-ESTIMATED FUEL ECONOMY ⁴ | | | |
|-----------------------|-----------------------------|-----------------------|------------------------|--|--------|--------|--------|
| | | | | 4x2 | | 4x4 | |
| | | | | CITY | HWY. | CITY | HWY. |
| 4.6L 2-valve V8 | 4-speed auto. with Tow/Haul | 248 @ 4750 | 294 @ 4000 | 15 mpg | 19 mpg | 14 mpg | 18 mpg |
| 4.6L 3-valve V8 | 6-speed auto. with Tow/Haul | 292 @ 5700 | 320 @ 4000 | 15 mpg | 21 mpg | 14 mpg | 20 mpg |
| 5.4L 3-valve V8 (gas) | 6-speed auto. with Tow/Haul | 310 @ 5000 | 365 @ 3500 | 14 mpg | 20 mpg | 14 mpg | 18 mpg |
| 5.4L 3-valve V8 (E85) | 6-speed auto. with Tow/Haul | 320 @ 5200 | 390 @ 3500 | 10 mpg | 14 mpg | 10 mpg | 13 mpg |

¹Requires Heavy-Duty Payload Package. ²SVT RAPTOR only. ³Requires Max. Trailer Tow Package. ⁴Actual mileage may vary with driving habits.



EXTERIOR COLORS



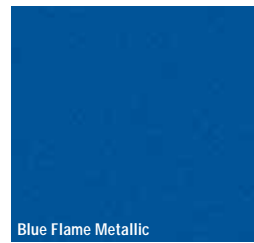
Oxford White



Tuxedo Black Metallic



Vermillion Red



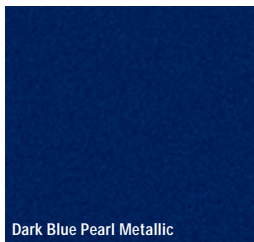
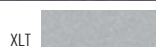
Blue Flame Metallic



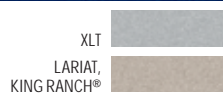
Ingot Silver Metallic



Sterling Grey Metallic



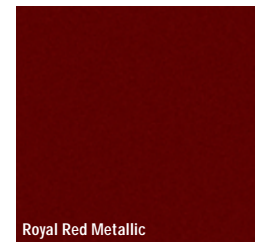
Dark Blue Pearl Metallic



Pueblo Gold Metallic



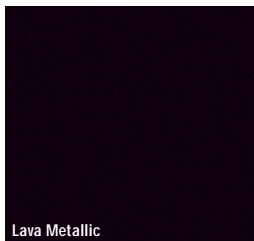
Red Candy Metallic
Tinted Clearcoat



Royal Red Metallic



White Platinum Metallic Tri-Coat



Lava Metallic



Molten Orange Metallic Tri-Coat

Two-Tone Accent Colors



Ingot Silver Metallic



Pueblo Gold Metallic

| | Monotone Exterior | Ingot Silver Two-Tone Exterior |
|--|-------------------|--------------------------------|
| XL | | |
| Oxford White | ● | |
| Tuxedo Black Metallic | ● | |
| Vermillion Red | ● | |
| Blue Flame Metallic | ● | |
| Ingot Silver Metallic | ● | |
| Sterling Grey Metallic | ● | |
| STX | | |
| Oxford White | ● | |
| Tuxedo Black Metallic | ● | |
| Vermillion Red | ● | |
| Blue Flame Metallic | ● | |
| Ingot Silver Metallic | ● | |
| Sterling Grey Metallic | ● | |
| XLT | | |
| Oxford White | ● | ● |
| Tuxedo Black Metallic | ● | ● |
| Vermillion Red | ● | ● |
| Blue Flame Metallic | ● | ● |
| Ingot Silver Metallic | ● | |
| Sterling Grey Metallic | ● | ● |
| Dark Blue Pearl Metallic | ● | ● |
| Pueblo Gold Metallic | ● | |
| Red Candy Metallic Tinted Clearcoat ¹ | ● | ● |
| Royal Red Metallic | ● | |
| FX2/FX4 | | |
| Oxford White | ● | |
| Tuxedo Black Metallic | ● | |
| Vermillion Red | ● | |
| Blue Flame Metallic | ● | |
| Ingot Silver Metallic | ● | |
| Sterling Grey Metallic | ● | |
| Red Candy Metallic Tinted Clearcoat ¹ | ● | |

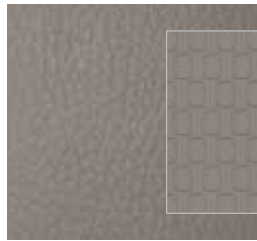
¹Additional-cost option.

INTERIORS:

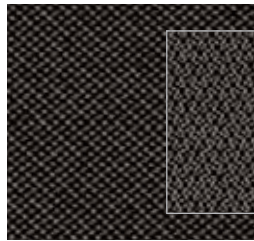
● Camel/Tan ● Medium Stone/Stone ● Black/Black

Colors shown are representative only. Not all colors are available on all models. See your dealer for actual paint/trim options.

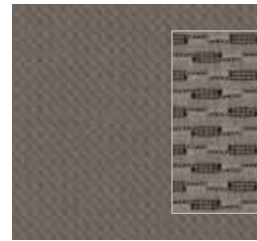
INTERIOR COLORS



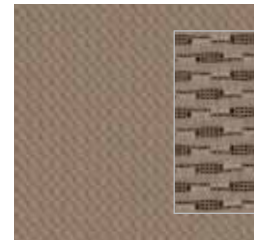
Vinyl – Medium Stone
Standard on XL



Cloth – Medium Stone
Optional on XL, Standard on STX



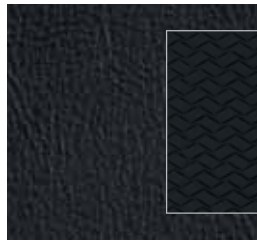
Premium Cloth – Medium Stone
Standard on XLT



Premium Cloth – Camel
Standard on XLT



Sport Cloth – Black
Standard on FX2 and FX4



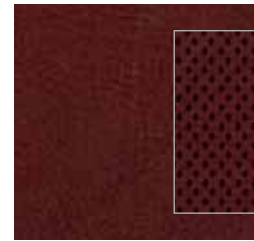
Sport Leather – Black
Optional on FX2 and FX4



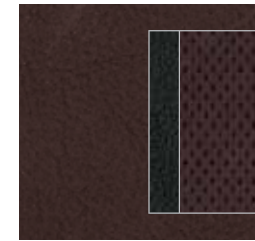
Leather – Camel
Standard on LARIAT



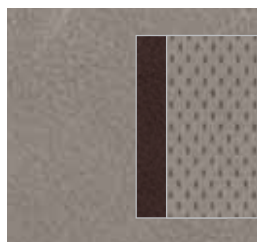
Leather – Black
Standard on LARIAT



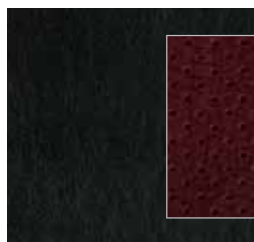
Leather – Chaparral
Standard on KING RANCH®



Leather – Sienna Brown
Standard on PLATINUM



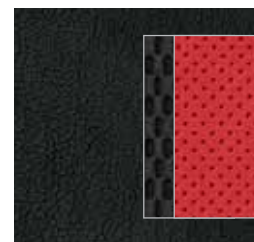
Leather – Medium Stone
Standard on PLATINUM



Leather – Lava/Black insert
Standard on Ford Harley-Davidson™



Leather/Cloth – Black
Standard on SVT RAPTOR



Leather/Cloth – Orange/Black insert
Optional on SVT RAPTOR

| | Monotone Exterior | Pueblo Gold Two-Tone Exterior |
|--|-------------------|-------------------------------|
| LARIAT | | |
| Oxford White | ● ● | ● ● |
| Tuxedo Black Metallic | ● ● | ● ● |
| Ingot Silver Metallic | | ● |
| Dark Blue Pearl Metallic | ● ● | ● ● |
| Red Candy Metallic Tinted Clearcoat ¹ | ● ● | ● ● |
| Royal Red Metallic | ● ● | ● ● |
| White Platinum Metallic Tri-Coat ¹ | ● ● | ● ● |
| KING RANCH® | | |
| Oxford White | | ● |
| Tuxedo Black Metallic | | ● |
| Dark Blue Pearl Metallic | | ● |
| Royal Red Metallic | | ● |
| White Platinum Metallic Tri-Coat ¹ | | ● |
| PLATINUM | | |
| Tuxedo Black Metallic | ● ● | |
| Ingot Silver Metallic | ● ● | |
| Sterling Grey Metallic | ● ● | |
| Red Candy Metallic Tinted Clearcoat ¹ | ● ● | |
| White Platinum Metallic Tri-Coat ¹ | ● ● | |
| FORD HARLEY-DAVIDSON™ | | |
| Tuxedo Black Metallic | ● | |
| Lava Metallic | ● | |
| SVT RAPTOR | | |
| Oxford White | ● | |
| Tuxedo Black Metallic | ● ● | |
| Blue Flame Metallic | ● | |
| Molten Orange Metallic Tri-Coat ¹ | ● ● | |

¹Additional-cost option.

INTERIORS:

- Camel/Tan ● Medium Stone/Stone ● Black/Black
- Chaparral/Camel ● Sienna Brown/Black
- Lava/Black ● Orange/Black

WHEELS

17" Grey Styled-Steel
Standard on XL



17" Machined-Aluminum
Standard on STX



17" Machined-Aluminum
with Painted Accents
Standard on XLT



17" 7-Lug Steel
Included with Heavy-Duty
Payload Package



17" Painted Cast-Aluminum
with Machined Finish
Standard on SVT RAPTOR



18" Machined-Aluminum
with Painted Accents
Standard on FX2



18" Machined Cast-Aluminum
Standard on FX4,
Included with STX Décor Package



18" Chrome-Clad Aluminum
Included with XLT and
LARIAT Chrome Packages



18" 7-Spoke Bright-Aluminum
Standard on LARIAT



18" 7-Spoke Aluminum
with Pueblo Gold Painted Accents
Standard on KING RANCH®



20" 6-Spoke
Premium Painted-Aluminum
Optional on FX2



20" 6-Spoke Machined-Aluminum
Optional on FX4 and LARIAT



20" Chrome-Clad Aluminum
Optional on XLT and
LARIAT Chrome Packages



20" Premium Painted-Aluminum
Optional on KING RANCH®



20" Polished-Aluminum
Standard on PLATINUM



22" Polished Forged-Aluminum
with Painted Accents
Standard on Ford Harley-Davidson™ F-150