

2010  
**FOCUS** 

**Specifications**

[fordvehicles.com](http://fordvehicles.com)

# Specs

## DIMENSIONS & CAPACITIES

Exterior	Sedan	Coupe
Wheelbase	102.9"	102.9"
Length	175.0"	175.0"
Height	58.6"	58.6"
Width – Excluding mirrors	67.9"	67.9"
Width – Including mirrors	78.4"	78.4"

### Interior

Front		
Head room	39.2"	39.2"
Shoulder room	53.4"	53.5"
Hip room	50.4"	50.4"
Leg room	41.7"	41.7"

### Rear

Head room	38.3"	38.3"
Shoulder room	53.6"	53.7"
Hip room	50.9"	48.3"
Leg room	36.1"	36.1"

### Capacities

Seating	5	5
Passenger volume (cu. ft.)	93.4	93.3
Luggage volume (cu. ft.)	13.8	13.8
Total interior volume (cu. ft.)	107.2	107.1
Fuel capacity (gal.)	13.5	13.5

## HORSEPOWER, TORQUE & EPA-ESTIMATED FUEL ECONOMY

### 2.0L Duratec® I-4 Engine

Horsepower	140 @ 6000 rpm
Torque (lb.-ft.)	136 @ 4250 rpm
Horsepower (coupe models with manual)	143 @ 6000 rpm
Torque (lb.-ft.; coupe models with manual)	136 @ 4250 rpm
5-speed manual	24 mpg city/35 hwy.
4-speed automatic	24 mpg city/34 hwy.

### 2.0L Duratec 20E PZEV I-4 Engine¹

Horsepower	136 @ 6000 rpm
Torque (lb.-ft.)	133 @ 4250 rpm
5-speed manual	24 mpg city/35 hwy.
4-speed automatic	24 mpg city/34 hwy.

Dimensions may vary by trim level.

Cargo and load capacity limited by weight and weight distribution.

¹Standard on models in CA, CT, MA, ME, NY, PA, RI and VT; available on retail orders in AZ, DE, MD, NH, NV, OH, OR and WV. ²Always wear your safety belt and secure children in the rear seat.

## STANDARD

### Mechanical

2.0L Duratec I-4 engine or 2.0L Duratec 20E PZEV I-4 engine
5-speed manual transmission
Anti-lock Brake System (ABS)
European-inspired suspension – Front: independent MacPherson strut, stabilizer bar; rear: independent Control Blade™
Power front disc and rear drum brakes

### Safety & Security

Personal Safety System™ for driver and front passenger includes dual-stage front airbags², safety belt pretensioners, safety belt energy-management retractors, safety belt usage sensors, driver-seat position sensor, crash severity sensor, restraint control module and Front-Passenger Sensing System
Front-seat side airbags²
Side-curtain airbags²
3-point safety belts for all 5 seating positions
AdvanceTrac® electronic stability control
Battery saver
Belt-Minder® front safety belt reminder
Child-safety rear door locks (sedan only)
LATCH – Lower anchors and tether anchors for child-safety seats
MyKey™ owner controls feature
Remote keyless-entry system with trunk release (2 key fobs)
SecuriLock® passive anti-theft ignition system
Tire Pressure Monitoring System (excludes spare)

### Seating

5-person seating
Front bucket seats with adjustable head restraints
60/40 split-folding rear seats

### Interior

Air conditioning
AM/FM stereo/single-CD player with MP3 capability, clock and 4 speakers
Auxiliary audio input jack
Courtesy lights with theater-dimming feature
Cupholders (2 front, 1 rear)
Front and rear floor mats
Front-door bins and integrated bottle holders
Full-length center floor console with padded armrest
Illuminated entry
Map pocket on front-passenger seatback
Message center with odometer and instant fuel economy display
Power door locks
Power points (2, 12-volt)
Tilt steering column
Visor vanity mirrors

### Exterior

Rear-window defroster
Solar-tinted glass
Windshield wipers – 2-speed intermittent

**New Vehicle Limited Warranty.** We want your Ford Focus ownership experience to be the best it can be. So under this warranty, your new vehicle comes with 3-year/36,000-mile Bumper-to-Bumper Coverage, 5-year/60,000-mile Powertrain Warranty Coverage, 5-year/50,000-mile Safety Restraint Coverage, and 5-year/unlimited-mile Corrosion (Perforation) Coverage – all with no deductible. Please ask your Ford Dealer for a copy of this limited warranty.

**Roadside Assistance.** Covers your vehicle for 5 years or 60,000 miles, so you have the security of knowing that help may be only a phone call away should you run out of fuel, lock yourself out of the vehicle, or need towing. Your Ford Dealer can provide complete details on all of these advantages.

**Ford Credit.** Get the ride you want. Whether you plan to lease or finance, you'll find the choices that are right for you at Ford Credit. Ask your Ford Dealer for details or check us out at [fordcredit.com](http://fordcredit.com).

**Ford Extended Service Plan.** For a purchase or lease, the Ford Extended Service Plan (ESP) gives you "Peace-of-Mind" protection designed to cover key vehicle components and protect you from the cost of unexpected repairs. Ask your dealer for a Ford ESP, the only service contract backed exclusively by Ford and honored at all Ford Lincoln Mercury dealerships.

**Insurance Services.** Get Ford Motor Company quality in your auto insurance. Our program offers industry-leading benefits and competitive rates. Call 1-877-367-3847, or visit us at [fordvip.com](http://fordvip.com) for a no-obligation quote. Insurance offered by American Road Services Company (in CA, American Road Insurance Agency), a licensed agency and subsidiary of Ford Motor Company.

Comparisons based on 2009 competitive models (class is Compact Coupes and Sedans), publicly available information and Ford certification data at time of release. Some features discussed may be optional. Vehicles shown may contain optional equipment. Features shown may be offered only in combination with other options or subject to additional ordering requirements or limitations. Dimensions shown may vary due to optional features and/or production variability. Following release of the PDF, certain changes in standard equipment, options and the like, or product delays may have occurred which would not be included in these pages. Your Ford Dealer is the best source for up-to-date information. Ford Division reserves the right to change product specifications at any time without incurring obligations.



## FOCUS S SEDAN

Equipped with all standard features, plus:

### Rapid Spec 100A:

15" steel wheels with silver-painted covers  
P195/60R15 tires (low rolling resistance)  
Cloth seats  
Black door handles  
Black manual sideview mirrors  
Chrome 2-bar grille  
Halogen headlamps

### Available Options

4-speed automatic transmission  
SIRIUS Satellite Radio with 6-month subscription



## FOCUS SE SEDAN

Equipped with all standard S Sedan features, plus:

### Rapid Spec 200A:

15" aluminum-alloy wheels  
Perimeter alarm  
SIRIUS Satellite Radio with 6-month subscription  
Power sideview mirrors  
Power windows with one-touch-down driver-window feature

### Available Option Groups

#### Rapid Spec 201A: Driver's Group Package:

leather-wrapped steering wheel with cruise and secondary audio controls, and auto-dimming rearview mirror + Ford SYNC® voice-activated, in-vehicle communications and entertainment system

#### Rapid Spec 202A: SYNC & Sound Package:

Premium AM/FM stereo/single-CD player with MP3 capability, 8 speakers, 8" subwoofer and 190 watts  
+ **Driver's Group Package**

### Available Options & Package

4-speed automatic transmission

**SE Sedan Appearance Package:** 15" alloy wheels with unique finish, decklid spoiler and fog lamps

Ambient Lighting  
Cruise control  
Power moonroof



## FOCUS SEL SEDAN

Equipped with all standard SE Sedan features, plus:

### Rapid Spec 300A:

16" Euroflange aluminum-alloy wheels  
P205/50R16 tires  
Enhanced European-inspired front and rear suspensions with rear stabilizer bar  
Leather-trimmed seats with heated front row  
Ambient Lighting

**Driver's Group Package:** leather-wrapped steering wheel with cruise and secondary audio controls, and auto-dimming rearview mirror + SYNC voice-activated, in-vehicle communications and entertainment system

Instrument cluster includes metallic instrument panel appliqué with bright cluster rings, release handles and register accents; metallic console top plate; and performance cluster  
Chrome door handles  
Chrome exhaust tip  
Fog lamps  
Power, heated, chrome-capped sideview mirrors

### Available Option Group

**Rapid Spec 301A: Moon & Tune Package:** power moonroof with shade, and Premium AM/FM stereo/single-CD player with MP3 capability, 8 speakers, 8" subwoofer and 190 watts

### Available Option

4-speed automatic transmission



## FOCUS SES SEDAN

Equipped with all standard SE Sedan features, plus:

### Rapid Spec 400A:

17" premium painted dark stainless aluminum wheels  
P215/45R17 tires  
Performance suspension with larger rear stabilizer bar  
Ambient Lighting

**Driver's Group Package:** leather-wrapped steering wheel with cruise and secondary audio controls, and auto-dimming rearview mirror + SYNC voice-activated, in-vehicle communications and entertainment system

Instrument cluster includes metallic instrument panel appliqué with bright cluster rings, release handles and register accents; metallic console top plate; and performance cluster  
Body-color door handles  
Chrome exhaust tip  
Dark chrome 2-bar grille  
Dark chrome headlamps and taillamps  
European-inspired front fascia with integrated fog lamps  
Power, heated, body-color sideview mirrors  
Decklid spoiler

### Available Option Group

**Rapid Spec 401A: Moon & Tune Package:** power moonroof with shade, and Premium AM/FM stereo/single-CD player with MP3 capability, 8 speakers, 8" subwoofer and 190 watts

### Available Options

4-speed automatic transmission  
Leather-trimmed seats with heated front row





## FOCUS SE COUPE

Equipped with all standard features, plus:

### Rapid Spec 200A:

16" aluminum-alloy wheels  
P205/50R16 tires  
Enhanced European-inspired front and rear suspensions with front and rear stabilizer bars  
Perimeter alarm  
SIRIUS Satellite Radio with 6-month subscription  
Body-color door handles  
Chrome exhaust tip  
Dark chrome 2-bar grille  
Dark chrome headlamps and taillamps  
European-inspired front fascia with integrated fog lamps  
Power windows with one-touch-down driver-window feature  
Power, heated body-color sideview mirrors  
Decklid spoiler  
Sport-tuned exhaust (manual transmission only)

### Available Option Groups

**Rapid Spec 201A: Driver's Group Package:** leather-wrapped steering wheel with cruise and secondary audio controls, and auto-dimming rearview mirror + Ford SYNC® voice-activated, in-vehicle communications and entertainment system

**Rapid Spec 202A: SYNC & Sound Package:** Premium AM/FM stereo/single-CD player with MP3 capability, 8 speakers, 8" subwoofer and 190 watts + **Driver's Group Package**

### Available Options

4-speed automatic transmission  
Ambient Lighting  
Cruise control  
Power moonroof



## FOCUS SES COUPE

Equipped with all standard SE Coupe features, plus:

### Rapid Spec 400A:

17" premium painted dark stainless aluminum wheels  
P215/45R17 tires  
Performance suspension with larger rear stabilizer bar  
Ambient Lighting

**Driver's Group Package:** leather-wrapped steering wheel with cruise and secondary audio controls, and auto-dimming rearview mirror + SYNC voice-activated, in-vehicle communications and entertainment system

Instrument cluster includes metallic instrument panel appliqué with bright cluster rings, release handles and register accents; metallic console top plate; and performance cluster

High-mounted rear spoiler

### Available Option Group

**Rapid Spec 401A: Moon & Tune Package:** power moonroof with shade, and Premium AM/FM stereo/single-CD player with MP3 capability, 8 speakers, 8" subwoofer and 190 watts

### Available Options

4-speed automatic transmission with 4.2:1 final drive ratio  
Leather-trimmed seats with heated front row

## Wheels



**15" Steel with Silver-Painted Cover**  
Standard on S Sedan



**15" Aluminum-Alloy**  
Standard on SE Sedan



**15" Alloy with Unique Finish**  
Standard on SE Sedan Appearance Package



**16" Aluminum-Alloy**  
Standard on SE Coupe



**16" Euroflange Aluminum-Alloy**  
Standard on SEL Sedan



**17" Premium Painted Dark Stainless Aluminum**  
Standard on SES Coupe and SES Sedan

SIRIUS is a registered trademark of SIRIUS XM Radio Inc. Subscriptions governed by SIRIUS Terms and Conditions at [sirius.com/service/terms](http://sirius.com/service/terms).

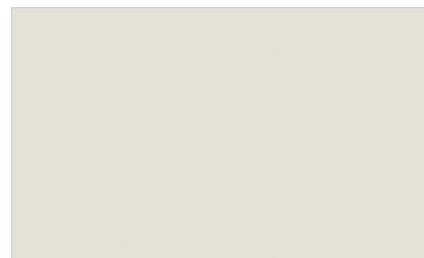
## Exterior colors



Blue Flame Metallic



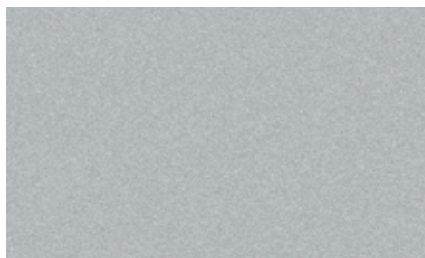
Sangria Red Metallic



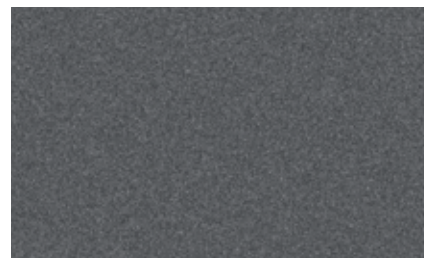
White Suede



Natural Neutral Metallic



Ingot Silver Metallic



Sterling Grey Metallic



Black

Colors shown are representative only. Not all colors are available on all models.  
See your dealer for actual paint/trim options.

### Interior Colors

#### S Sedan

Blue Flame Metallic	●
Sangria Red Metallic	●
White Suede	●
Natural Neutral Metallic	●
Sterling Grey Metallic	●
Black	●

#### SE Sedan, SEL Sedan

Blue Flame Metallic	●	●
Sangria Red Metallic	●	●
White Suede	●	●
Natural Neutral Metallic	●	●
Ingot Silver Metallic	●	●
Sterling Grey Metallic	●	●
Black	●	●

#### SES Sedan

Blue Flame Metallic	●	●
Sangria Red Metallic	●	●
Ingot Silver Metallic	●	●
Sterling Grey Metallic	●	●
Black	●	●

#### SE Coupe

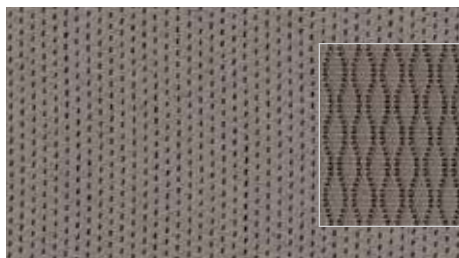
Blue Flame Metallic	●	●
Sangria Red Metallic	●	●
Ingot Silver Metallic	●	●
Sterling Grey Metallic	●	●
Black	●	●

#### SES Coupe

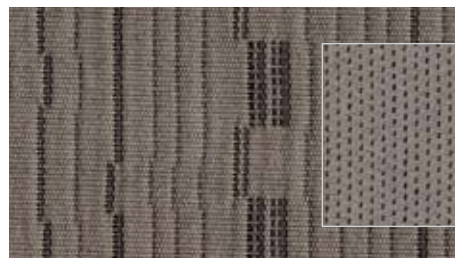
Blue Flame Metallic	●	●
Sangria Red Metallic	●	●
Ingot Silver Metallic	●	●
Sterling Grey Metallic	●	●
Black	●	●

**INTERIORS:** ● Medium Stone ● Charcoal Black

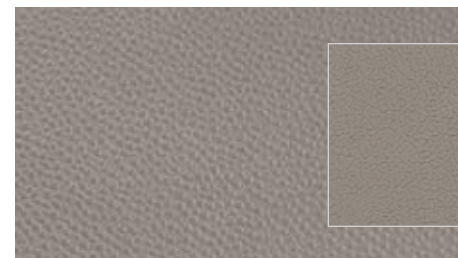
## Interior colors



**Cloth – Medium Stone**  
 Standard on S and SES



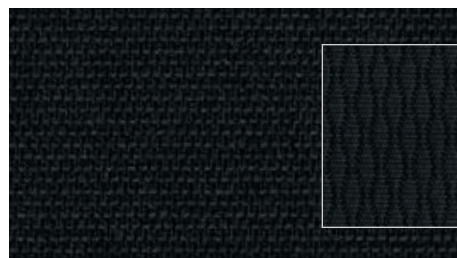
**Cloth – Medium Stone**  
 Standard on SE



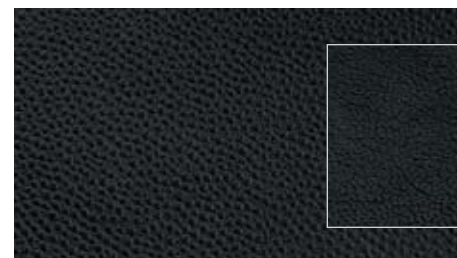
**Leather – Medium Stone**  
 Standard on SEL, Available on SES



**Cloth – Charcoal Black**  
 Standard on SE



**Cloth – Charcoal Black**  
 Standard on SES



**Leather – Charcoal Black**  
 Standard on SEL, Available on SES