



SPECIFICATIONS

DIMENSIONS & CAPACITIES

Exterior	
Wheelbase	112.9"
Length	202.9"
Height	60.7"
Width – Excluding mirrors	76.2"
Width – Including mirrors	85.7"
Interior	
Front	
Head room	39.0"
Shoulder room	57.9"
Hip room	56.3"
Leg room	41.9"
Rear	
Head room	37.8"
Shoulder room	56.9"
Hip room	55.8"
Leg room	38.1"
Cargo Volume	
Passenger volume (cu. ft.)	102.2
Luggage capacity (cu. ft.)	20.1
Total interior volume (cu. ft.)	122.3
Fuel capacity (gal.)	
FWD	20.0
AWD	19.0

HORSEPOWER, TORQUE & 2010 EPA-ESTIMATED FUEL ECONOMY

3.5L Duratec® V6 Engine	
Horsepower	263 @ 6250 rpm
Torque (lb.-ft.)	249 @ 4500 rpm
6-speed automatic	18 mpg city/28 hwy.
6-speed SelectShift Automatic™	
FWD	18 mpg city/27 hwy.
AWD	17 mpg city/25 hwy.
3.5L EcoBoost™ V6 Engine	
Horsepower	365 @ 5500 rpm ¹
Torque (lb.-ft.)	350 @ 3500 rpm ¹
6-speed SelectShift Automatic	
AWD	17 mpg city/25 hwy.

Dimensions may vary by trim level.
Cargo and load capacity limited by weight and weight distribution.
¹Figures achieved using premium unleaded gasoline.

STANDARD

Mechanical	
3.5L Duratec V6 engine	
4-wheel disc Anti-lock Brake System (ABS)	
Brake and Engine Actuated Traction Control	
Front-wheel drive (FWD)	
Safety & Security	
Personal Safety System™ for driver and front passenger includes dual-stage front airbags ² , safety belt pretensioners, safety belt energy-management retractors, safety belt usage sensors, driver-seat position sensor, crash severity sensor, restraint control module and Front-Passenger Sensing System	
Front-seat side airbags ²	
Safety Canopy® System with side-curtain airbags ² and rollover sensor	
3-point safety belts for all seating positions	
AdvanceTrac® electronic stability control	
Battery saver	
Belt-Minder® front safety belt reminder	
Child-safety rear door locks	
Emergency trunk release	
Illuminated entry	
LATCH – Lower anchors and tether anchors for child-safety seats	
MyKey™ owner controls feature	
Remote keyless entry with integrated keyhead transmitter remotes (2)	
SecuriCode™ invisible keypad	
SecuriLock® passive anti-theft ignition system	
Side-intrusion door beams	
SOS Post-Crash Alert System™ ³	
Tire Pressure Monitoring System (excludes spare)	

Seating

Front bucket seats
6-way power driver seat with manual lumbar adjustment
2-way manual front-passenger seat
60/40 split-folding rear seatbacks

Interior

2nd-row reading lights
Accessory delay for power features
Auxiliary audio input jack
Driver and front-passenger seatback map pockets
Dual sliding sun visors with illuminated vanity mirrors
Front and rear carpeted floor mats
Front center floor console with armrest and storage
Front overhead console with dome light and map light
Power door locks
Power points (3)
Power windows with one-touch-up/-down driver-window feature
Steering wheel-mounted cruise and audio controls
Tilt/telescoping steering wheel

Exterior

Easy Fuel™ capless fuel filler
Rear-window defroster
Solar-tinted glass
Wiper-activated halogen headlamps with autolamp

²Always wear your safety belt and secure children in the rear seat. ³SOS hardware may become damaged or the battery may lose power in a crash, which could prevent operation. Not all crashes will activate an airbag or safety belt pretensioner.

New Vehicle Limited Warranty. We want your Ford Taurus or Taurus SHO ownership experience to be the best it can be. So under this warranty, your new vehicle comes with 3-year/36,000-mile Bumper-to-Bumper Coverage, 5-year/60,000-mile Powertrain Warranty Coverage, 5-year/50,000-mile Safety Restraint Coverage, and 5-year/unlimited-mile Corrosion (Perforation) Coverage – all with no deductible. Please ask your Ford Dealer for a copy of this limited warranty.

Roadside Assistance. Covers your vehicle for 5 years or 60,000 miles, so you have the security of knowing that help may be only a phone call away should you run out of fuel, lock yourself out of the vehicle, or need towing. Your Ford Dealer can provide complete details on all of these advantages.

Ford Credit. Get the ride you want. Whether you plan to lease or finance, you'll find the choices that are right for you at Ford Credit. Ask your Ford Dealer for details or check us out at fordcredit.com.

Ford Extended Service Plan. For a purchase or lease, the Ford Extended Service Plan (ESP) gives you "Peace-of-Mind" protection designed to cover key vehicle components and protect you from the cost of unexpected repairs. Ask your dealer for a Ford ESP, the only service contract backed exclusively by Ford and honored at all Ford Lincoln Mercury dealerships.

Insurance Services. Get Ford Motor Company quality in your auto insurance. Our program offers industry-leading benefits and competitive rates. Call 1-877-367-3847, or visit us at fordvip.com for a no-obligation quote. Insurance offered by American Road Services Company (in CA, American Road Insurance Agency), a licensed agency and subsidiary of Ford Motor Company.

Comparisons based on 2009 competitive models (Standard 5-Passenger Large Car class), publicly available information and Ford certification data at time of release. Some features discussed may be optional. Vehicles shown may contain optional equipment. Features shown may be offered only in combination with other options or subject to additional ordering requirements or limitations. Dimensions shown may vary due to optional features and/or production variability. Following release of the PDF, certain changes in standard equipment, options and the like, or product delays may have occurred which would not be included in these pages. Your Ford Dealer is the best source for up-to-date information. Ford Division reserves the right to change product specifications at any time without incurring obligations.



TAURUS SE

Equipped with all standard features, plus:

Rapid Spec 100A:

- 6-speed automatic transmission
- 17" painted sparkle silver aluminum wheels
- P235/60R17 all-season tires
- Day/night rearview mirror
- AM/FM stereo/single-CD player with MP3 capability and 6 speakers
- Message center
- Black, power sideview mirrors
- Twin chrome-tipped exhaust



TAURUS SEL

Equipped with all standard SE features, plus:

Rapid Spec 200A:

- 6-speed SelectShift Automatic™ transmission with paddle shifters
- 18" painted sparkle silver aluminum wheels
- P235/55R18 all-season tires
- Anti-theft perimeter alarm
- Auto-dimming rearview mirror
- Dual-zone Electronic Automatic Temperature Control
- Leather-wrapped shift knob
- Leather-wrapped steering wheel
- Message center with compass
- Outside temperature display
- SIRIUS® Satellite Radio with 6-month subscription
- Body-color, power, heated sideview mirrors and security approach lamps
- Supplemental Park Lamps

Available Option Groups

- Rapid Spec 201A:** Ford SYNC® voice-activated communications and entertainment system + Reverse Sensing System
- Rapid Spec 202B:** SYNC + Reverse Sensing System + Ambient Lighting + Intelligent Access with Push-Button Start + power-adjustable pedals + Sony® Sound System with AM/FM stereo/6-disc in-dash CD changer, MP3 capability, 12 speakers and 390 watts + 19" premium painted sparkle silver aluminum wheels with P225/45R19 V-rated all-season tires + Rear View Camera

Available Options

- All-Wheel Drive (AWD)
- Leather-trimmed seats with heated front seats and 6-way power front-passenger seat with manual lumbar
- Multi-contour Active Motion™ massaging front seats (requires leather-trimmed seats)
- Power moonroof (requires SYNC)
- Red Candy Metallic Tinted Clearcoat paint
- White Platinum Metallic Tri-Coat paint



TAURUS LIMITED

Equipped with all standard SEL features, plus:

Rapid Spec 300B:

- 19" chrome-clad aluminum wheels
- P255/45R19 V-rated all-season tires
- 10-way power driver and front-passenger seats with driver-side memory feature
- Ambient Lighting
- Auto-dimming rearview mirror with microphone
- Leather-trimmed seats with perforated inserts
- Leather-wrapped steering wheel with wood accent
- Power windows with global open and one-touch-up/-down for driver and front passenger
- Premium Sound System with AM/FM stereo/6-disc in-dash CD changer, MP3 capability and 6 speakers, plus additional center speaker
- SYNC
- Universal Garage Door Opener
- Chrome-accented, power, heated sideview mirrors with memory and security approach lamps
- Rear View Camera
- Reverse Sensing System

Available Option Groups

- Rapid Spec 301B:** Heated and cooled driver and front-passenger seats + heated rear seats + rear-window power sunshade
- Rapid Spec 302B:** Intelligent Access with Push-Button Start + power-adjustable pedals with memory + Sony Sound System + auto-dimming driver-side sideview mirror + Auto High Beam headlamps + BLIS® (Blind Spot Information System) with Cross Traffic Alert + rain-sensing windshield wipers
- Rapid Spec 303B:** Heated and cooled driver and front-passenger seats + heated rear seats + rear-window power sunshade + Intelligent Access with Push-Button Start + power-adjustable pedals with memory + Sony Sound System + auto-dimming driver-side sideview mirror + Auto High Beam headlamps + BLIS (Blind Spot Information System) with Cross Traffic Alert + rain-sensing windshield wipers

Available Options

- All-Wheel Drive (AWD)
- Adaptive Cruise Control and Collision Warning with Brake Support (requires BLIS with Cross Traffic Alert)
- Multi-contour Active Motion massaging front seats (requires heated and cooled driver and front-passenger seats)
- Hard drive-based, voice-activated Navigation System featuring SIRIUS Travel Link™ (with introductory 6-month subscription) and nearly 10 gigabytes of digital storage for pictures and music; includes AM/FM stereo/single-CD/DVD, and MP3 capability (requires BLIS with Cross Traffic Alert)
- Power moonroof (requires "LIMITED" branded front floor mats)
- Red Candy Metallic Tinted Clearcoat paint
- White Platinum Metallic Tri-Coat paint



TAURUS SHO

Equipped with all standard Limited features, plus:

Rapid Spec 400B:

- 3.5L EcoBoost™ V6 engine
- 19" premium painted Luster-nickel aluminum wheels
- P255/45R19 V-rated all-season tires
- All-Wheel Drive (AWD)
- Dual exhaust with chrome tips
- Painted brake calipers
- Sport-tuned suspension
- Leather-trimmed seats with perforated Miko Suede inserts
- Aluminum brake and accelerator pedal covers
- "SHO" branded front floor mats
- Intelligent Access with Push-Button Start
- Body-color, power, heated sideview mirrors with memory, security approach lamps and auto-dimming driver side
- High-Intensity Discharge (HID) headlamps with autolamp
- Rear spoiler
- Rear View Camera

Available Option Groups

- Rapid Spec 401B:** Power moonroof + Sony Sound System with 12 speakers and 390 watts + heated and cooled driver and front-passenger seats
- Rapid Spec 402B:** Power moonroof + Sony Sound System with 12 speakers and 390 watts + heated and cooled driver and front-passenger seats + heated rear seats + rear-window power sunshade + power-adjustable pedals with memory + Auto High Beam headlamps + BLIS (Blind Spot Information System) with Cross Traffic Alert + rain-sensing windshield wipers

Available Options & Packages

- 20" premium painted-aluminum wheels with P245/45R20 V-rated all-season tires
- Adaptive Cruise Control and Collision Warning with Brake Support (requires power moonroof)¹
- Hard drive-based, voice-activated Navigation System featuring SIRIUS Travel Link (with introductory 6-month subscription) and nearly 10 gigabytes of digital storage for pictures and music; includes AM/FM stereo/single-CD/DVD, and MP3 capability (requires power moonroof)
- Multi-contour Active Motion massaging front seats (requires power moonroof)
- SHO Performance Package:** performance brake pads, sport-calibrated steering, electronic stability control "Sport Mode," 3.16:1 final drive ratio, 20" premium painted Luster-nickel aluminum wheels with P245/45R20 Y-rated Performance Summer Tire Compound and tire sealant/inflation kit (not available with Rear View Camera)
- Red Candy Metallic Tinted Clearcoat paint
- White Platinum Metallic Tri-Coat paint

¹Not available with SHO Performance Package.

Microsoft is a registered trademark of Microsoft Corporation.
The Bluetooth word mark is a trademark of the Bluetooth SIG, Inc.
SIRIUS is a registered trademark of SIRIUS XM Radio Inc. Subscriptions governed by SIRIUS Terms and Conditions at sirius.com/serviceterms.

Sony is a registered trademark of Sony Corporation.

EXTERIOR COLORS



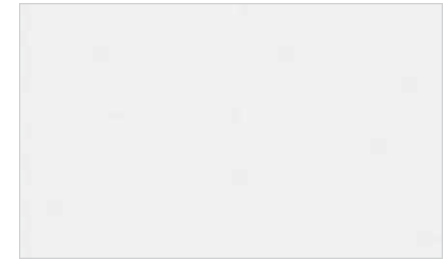
Cinnamon Metallic



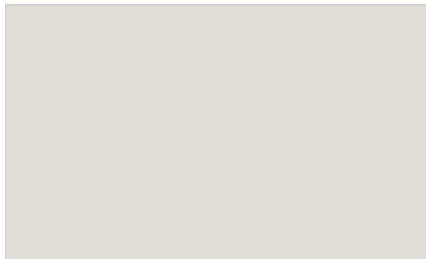
Red Candy Metallic Tinted Clearcoat



Gold Leaf Metallic



White Platinum Metallic Tri-Coat



White Suede



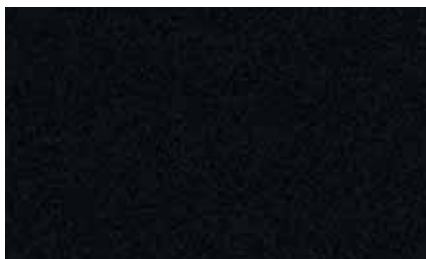
Ingot Silver Metallic



Steel Blue Metallic



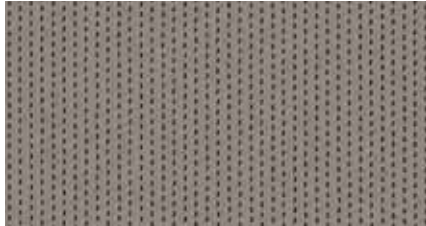
Atlantis Green Metallic



Tuxedo Black Metallic

Colors shown are representative only. Not all colors are available on all models. See your dealer for actual paint/trim options.

INTERIOR COLORS



Cloth - Light Stone
Standard on SE



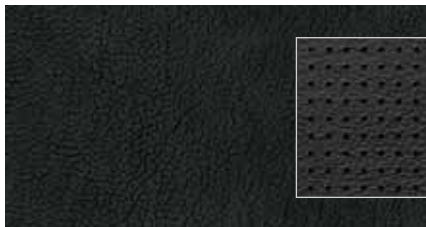
Tech Pattern accents



Leather - Light Stone
Optional on SEL



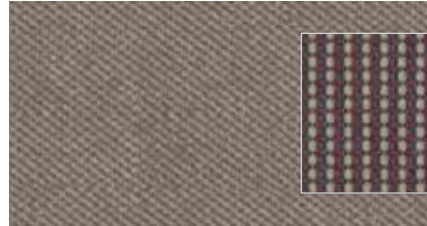
Brown Oliver Ash accents



Leather - Charcoal Black with perforated
Charcoal Black inserts
Standard on Limited



Black Oliver Ash accents



Cloth - Light Stone with Light Stone inserts
Standard on SEL



Brown Oliver Ash accents



Leather - Charcoal Black
Optional on SEL



Textured Oval accents



Leather - Charcoal Black
with perforated Charcoal Black Miko Suede inserts
Standard on SHO



Aluminum accents



Cloth - Charcoal Black with Charcoal Black inserts
Standard on SEL



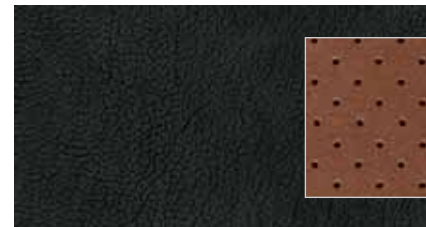
Textured Oval accents



Leather - Light Stone
with perforated Light Stone inserts
Standard on Limited



Brown Oliver Ash accents



Leather - Charcoal Black
with perforated Umber Miko Suede inserts
Standard on SHO



Aluminum accents

	Interior Colors
SE	
Cinnamon Metallic	●
White Suede	●
Ingot Silver Metallic	●
Steel Blue Metallic	●
Tuxedo Black Metallic	●

SEL	
Cinnamon Metallic	● ●
Red Candy Metallic Tinted Clearcoat	● ●
Gold Leaf Metallic	●
White Platinum Metallic Tri-Coat	● ●
White Suede	●
Ingot Silver Metallic	● ●
Steel Blue Metallic	● ●
Tuxedo Black Metallic	● ●

Limited	
Cinnamon Metallic	● ●
Red Candy Metallic Tinted Clearcoat	● ●
Gold Leaf Metallic	●
White Platinum Metallic Tri-Coat	● ●
White Suede	●
Ingot Silver Metallic	● ●
Steel Blue Metallic	● ●
Tuxedo Black Metallic	● ●

SHO	
Cinnamon Metallic	● ● ●
Red Candy Metallic Tinted Clearcoat	● ● ●
White Platinum Metallic Tri-Coat	● ● ●
Ingot Silver Metallic	● ● ●
Steel Blue Metallic	● ● ●
Atlantis Green Metallic	● ● ●
Tuxedo Black Metallic	● ● ●

INTERIORS: ● Light Stone ● Charcoal Black ● Charcoal Black with Umber inserts

WHEELS

17" Painted Sparkle Silver Aluminum
Standard on SE



18" Painted Sparkle Silver Aluminum
Standard on SEL



19" Premium Painted Sparkle Silver Aluminum
Optional on SEL



19" Chrome-Clad Aluminum
Standard on Limited



19" Premium Painted Luster-Nickel Aluminum
Standard on SHO



20" Premium Painted Luster-Nickel Aluminum
Optional on SHO