

2012 **ESCAPE+HYBRID**



Drive one.



Lots of fun – not lots of fill-ups.

Already dreaming up your next road trip? Perfect. Grab the keys to your new Escape and get going. The standard 2.5L Duratec® I-4 engine gives you 28 mpg hwy.¹ Or you can get the best mileage of any SUV in America² – 34 mpg city on Escape Hybrid. If you're headed for roads less traveled, Intelligent 4WD is just your thing.³ Imagine taking calls without picking up your phone.³ Summoning songs without touching your media player.³ Escape can even steer you into those tricky parallel parking spots downtown.³ Seriously. This may be your best trip ever. The 2012 Ford Escape.

XLT. Toreador Red Metallic. Available equipment.

¹EPA-estimated 23 city/28 hwy/25 combined mpg for Escape FWD with 2.5L I-4 and 5-speed manual; 21 city/28 hwy/23 combined mpg for Escape FWD with 2.5L I-4 and 6-speed automatic. ²EPA-estimated 34 city/31 hwy/32 combined mpg for Escape Hybrid FWD. Actual mileage will vary. Excluding vehicles built for Mazda. ³Available feature.



2012 **ESCAPE+HYBRID** ford.com



Conserves resources like no other SUV.¹



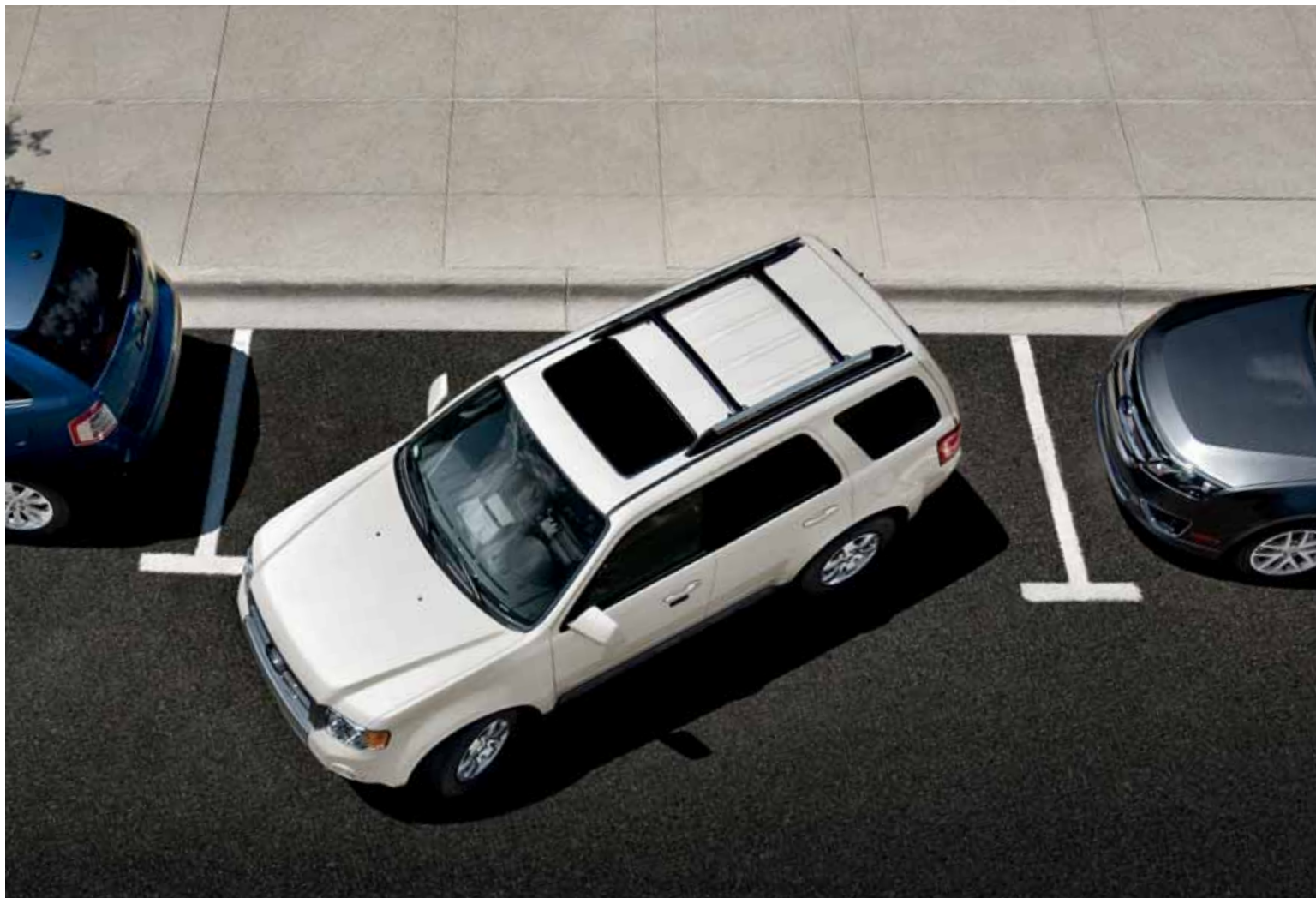
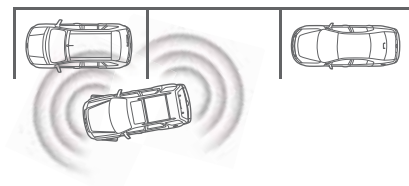
Escape Hybrid doesn't have to use any gas to operate at speeds of up to 44 mph or when it's stopped in traffic. Plus, the powertrain automatically recharges itself, so it never needs to be plugged in. The 2.5L i-VCT Atkinson-cycle I-4 engine works with the electric traction motor to create plenty of horsepower: 177 net. When passing or merging, the hybrid drive mode even gives you an extra power boost to ensure a lively performance. It doesn't get any better than the most fuel-efficient SUV in America.¹

Hybrid Limited. Lime Squeeze Metallic. Available equipment.

¹EPA-estimated 34 city/31 hwy/32 combined mpg for Escape Hybrid FWD. Actual mileage will vary. Excluding vehicles built for Mazda.



2012 **ESCAPE+HYBRID** ford.com



Steers you into the sweet spot.

That's right. First, active park assist¹ uses ultrasonic sensors to help you locate the perfect parallel parking spot. Then, you take your hands off the wheel and your Escape steers itself into place. You simply follow system prompts to shift gears and control the brake and accelerator pedals. The vehicle can be parked in as little as 24 seconds. Available exclusively on Escape Limited and Hybrid Limited.

Limited. White Suede. Available equipment.

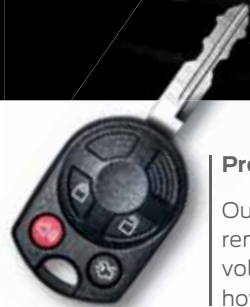
¹Available feature.



2012 **ESCAPE+HYBRID** ford.com

Comforts body and mind.

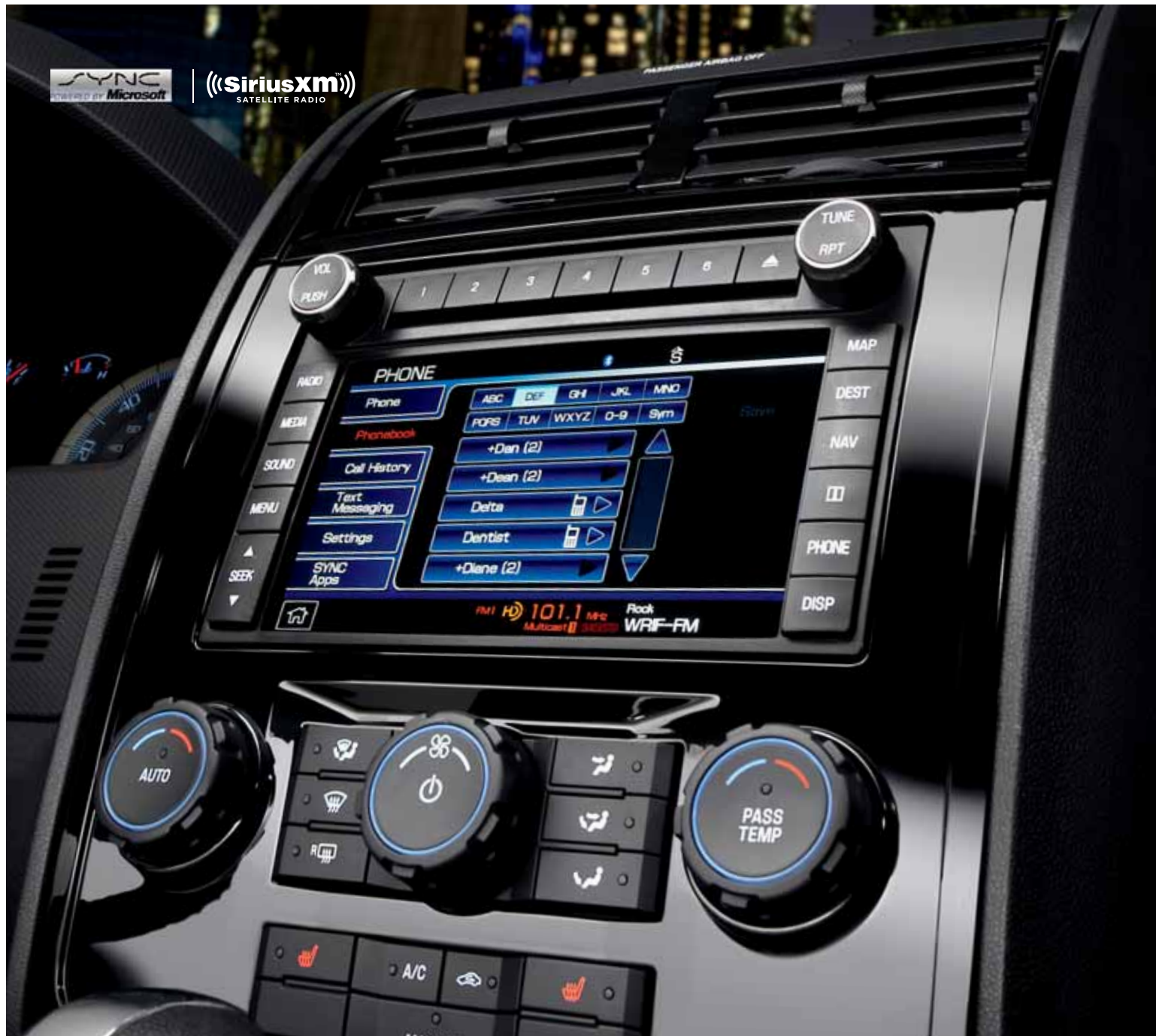
Escape seats up to 5 adults in fully supportive style. Another reason to feel good in here: The seat cushions contain environmentally friendly soy-based foam that helps conserve limited resources and reduce CO₂ emissions. Supple leather trim (shown) with heated front seats, plus gleaming chrome and Black accents, are standard on Escape Limited and Hybrid Limited. No matter which model you choose, Escape is bound to be the perfect fit for your adventures.



Promotes smart driving.

Our exclusive MyKey® allows you to program ignition keys with reminders to buckle up, drive at appropriate speeds, keep the audio volume low and much more. It's perfect for teaching young drivers how to behave on the road – even when you're not with them.





Hands control the wheel. Voice controls the rest.

Stay connected to calls, music and more with SYNC.

No more searching for your phone. No device on your ear. Connect to your world with voice-activated Ford SYNC.¹ Once paired, SYNC recognizes your phone and automatically transfers your contacts to support voice calling. It also plays music from your phone, MP3, USB or iPod.[®] And thanks to Bluetooth[®] streaming audio,¹ smartphone users can listen to Pandora[®] internet radio too. Just touch a button on the steering wheel and say things like "Call Melissa," or "Play genre: Pop." SYNC also offers 911 Assist,[™] and with an activated SYNC Services account you get business searches,¹ turn-by-turn driving directions¹ and more. Personalize your experience at SyncMyRide.com.

Full-color, voice-activated travel guide with SiriusXM.

The Navigation System² includes a 6-month trial subscription to SiriusXM Satellite Radio, Traffic and Travel Link³ to bring you over 130 channels of unique content, plus live infotainment services. Get continuously updated traffic information, plus check local fuel prices, weather reports, movie listings, sports scores and more. This system features a vibrant 6.5" LCD touch screen with interactive maps you can zoom and scroll. Of course, it also responds to voice commands for hands-free control. Play DVDs while Escape is in Park and store nearly 10 gigs of your digital music.

Limited. Charcoal Black leather trim. Available equipment.

¹Available feature. Requires compatible mobile device. Driving while distracted can result in loss of vehicle control. Only use mobile phones and other devices, even with voice commands, when it is safe to do so. Traffic alerts and turn-by-turn directions available in select markets. Text message and data rates may apply. ²Available feature. ³SiriusXM Satellite Radio, Traffic and Travel Link subscriptions sold separately or as a package after trial expires. SiriusXM Traffic and Travel Link service available in select markets. Subscriptions are governed by SiriusXM Customer Agreement; see www.siriusxm.com.



Drive one.

2012 **ESCAPE+HYBRID** ford.com

Powers you to places others only imagine.



Gas engines sip and zip.

Whether you pair it with the 5-speed manual transmission or the 6-speed automatic,¹ the standard 2.5L Duratec® I-4 engine delivers a remarkable 28 mpg hwy.² It also supplies a spirited 171 horsepower and 171 lb.-ft. of torque.

The 3.0L Duratec V6 engine¹ is flex fuel capable, so you can run it on gasoline, E85 (85% ethanol and 15% gasoline), or any blend of the two. Mated to an efficient 6-speed automatic transmission, it cranks out 240 horsepower and tows up to 3,500 lbs. when properly equipped.

Easy Fuel keeps it clean.

Our industry-first Easy Fuel® capless fuel filler, standard on all models, automatically seals shut when you remove the fuel nozzle. There's no messy cap to deal with or lose. You just gas up and go. It also helps reduce evaporative emissions.

4WD maximizes grip.

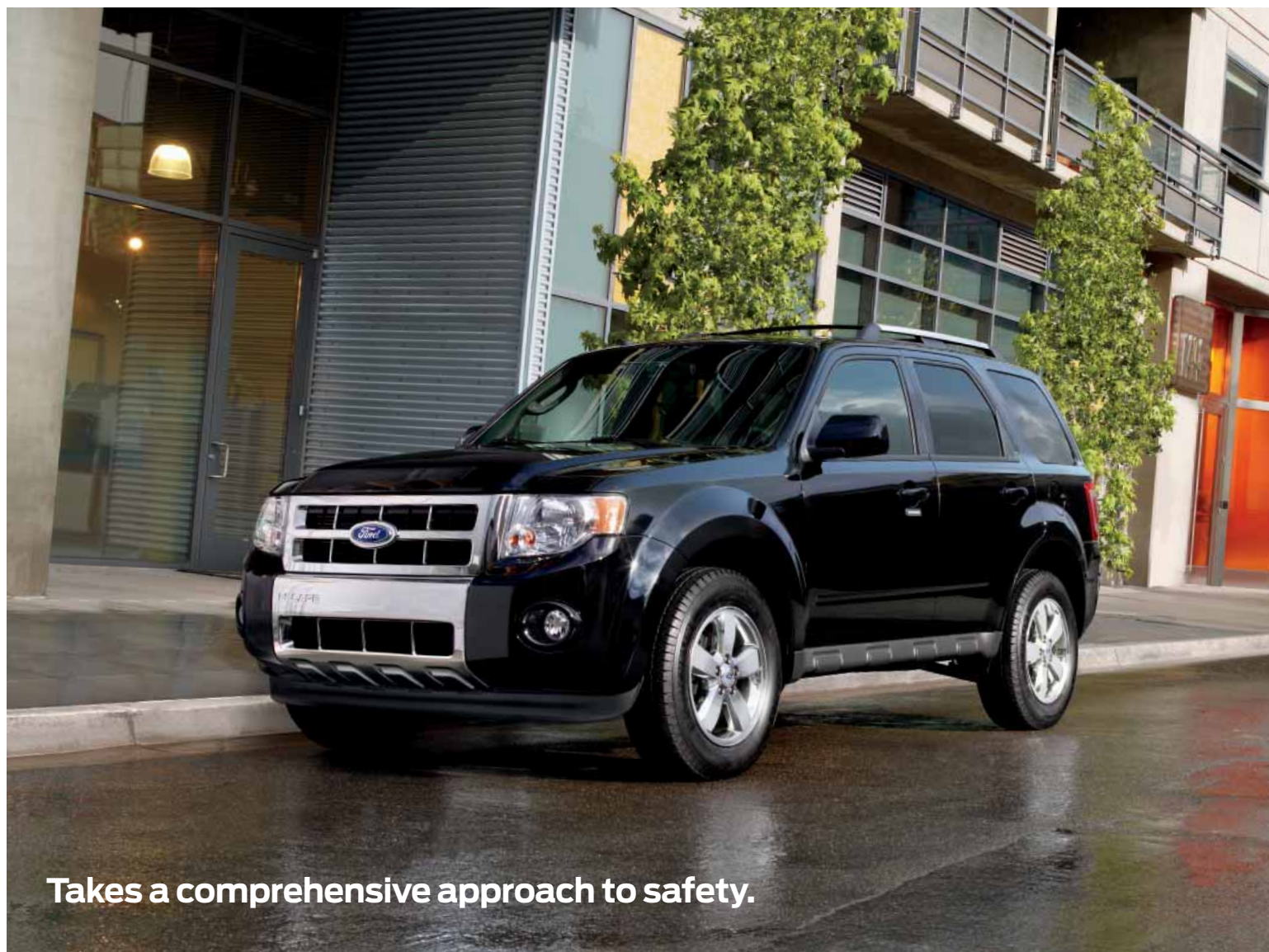
Every Escape is naturally nimble thanks to a fully independent suspension and outstanding clearance. Add our Intelligent 4WD¹ and let the all-terrain adventures begin. Always on and always working, it automatically monitors traction 200 times per second (much faster than any person could) and adjusts torque distribution as needed.

XLT. Ingot Silver Metallic. Available equipment.

¹Available feature. ²EPA-estimated 23 city/28 hwy/25 combined mpg for Escape FWD with 2.5L I-4 and 5-speed manual; 21 city/28 hwy/23 combined mpg for Escape FWD with 2.5L I-4 and 6-speed automatic.



2012 **ESCAPE+HYBRID** ford.com



Takes a comprehensive approach to safety.

Masters challenging moments.

Our standard AdvanceTrac® with RSC® (Roll Stability Control™) uses 2 gyroscopic sensors to help keep all 4 wheels firmly planted! It automatically helps avoid skidding and fishtailing, and is particularly beneficial in inclement weather.

Personalizes your protection.

The advanced Personal Safety System™ uses sensors to optimize deployment of the dual-stage front airbags in certain frontal collisions. Front-seat side airbags deploy in certain side-impact collisions. And our Safety Canopy® System increases protection with a rollover sensor and side-curtain airbags.

Clears up blind spots.

Each standard sideview mirror features an integrated convex blind spot mirror that helps alert you to vehicles and objects nearby so you can avoid them.

Reminds you to buckle up.

The Belt-Minder® system sounds a persistent alert to encourage those in front to buckle up for safety on every ride.

Sends an SOS for you.

Our SOS Post-Crash Alert System™ can automatically flash the hazard lights and sound the horn after an airbag has deployed or a safety belt pretensioner has activated in certain collisions.² No subscription required.

Directly contacts 911.

Ford SYNC®³ with 911 Assist™ uses your phone to call 911 in the event of airbag deployment or fuel pump shutoff.⁴ If needed, it can even give the operator an urgent message for you.

Limited. Black. Available equipment.

¹Remember that even advanced technology cannot overcome the laws of physics. It's always possible to lose control of a vehicle due to inappropriate driver input for the conditions. ²SOS hardware may become damaged or the battery may lose power in a crash, which could prevent operation. Not all crashes will activate an airbag or safety belt pretensioner. ³Available feature. ⁴The vehicle's electrical system (including the battery), the wireless service provider's signal and a connected mobile phone must all be available and operating for 911 Assist to function properly. These systems may become damaged in a crash. The paired mobile phone must be connected to SYNC, and the 911 Assist feature enabled, in order for 911 to be dialed.



2012 **ESCAPE+HYBRID** ford.com

Lots of ways to make it yours.



Take advantage of versatile standards to make your life easier. Store your stuff out of sight. Even transport your bike inside. You can also add options to help entertain your rear-seat passengers, show off your style, warm up your vehicle from afar and so much more. Create the Escape you want, just the way you want it.

Center floor console
Dual head restraint DVD by INVISION™^{1,2}
17" chrome-clad aluminum wheels¹
Power Code™ Remote Start System¹
67.2 cu. ft. of cargo space

¹Available feature. ²Ford Licensed Accessory.

custom
accessories 

fordaccessories.com



Create a more meaningful driving experience: Connect with Ford Custom Accessories for authentic personalization possibilities. The cost of select accessories – ordered and paid for at the time you buy or lease your Escape – can be rolled into your monthly payment. Warranty coverage works in your favor that way too. See your dealer for details.

XLT in Toreador Red Metallic customized with smoked hood and side window deflectors, molded splash guards, black step bars, roof cross bars, roof-mounted cargo box by THULE®¹ and rear spoiler

Interior light kit

All-weather floor mats

Rear spoiler

Keyless entry keypad

custom
accessories 

¹Ford Licensed Accessory.

ESCAPE Standard Features

Mechanical

4-wheel independent suspension
90,000-mile tune-up interval¹
Electric power-assisted steering
Front and rear stabilizer bars
Front-wheel drive (FWD)
Power front disc/rear drum brakes with Anti-Lock Brake System (ABS)

Seating

Front bucket seats
60/40 split-fold rear bench seat with tip-fold-flat latches

Interior

2 powerpoints (1 in each row)
Air conditioning
Auxiliary audio input jack
Covered visor vanity mirrors
Cruise control
Floor console with removable interior bins and 4 cupholders
Illuminated Entry System
Power door locks with child-safety rear door locks
Power windows with one-touch-down driver's side window feature
Rear floor air ducts
Tachometer
Tilt steering column

Exterior

Easy Fuel[®] capless fuel filler
Liftgate with flip-up glass
Power sideview mirrors with integrated blind spot mirrors and manual fold-away design
Rear-window defroster
Solar-tinted glass
Windshield wipers – Front: variable-intermittent with washer; rear: 2-speed with washer

Safety & Security

3-point safety belt restraint system for all seating positions
Adjustable head restraints at all 5 seating positions
AdvanceTrac[®] with RSC[®] (Roll Stability Control[™])
Belt-Minder[®] front safety belt reminder
Brake/shift interlock (with automatic transmission)
Front height-adjustable shoulder safety belts
Front-seat side airbags²
Integrated keyhead transmitter remotes (2)
LATCH (Lower Anchors and Tether Anchors for Children) for rear seating positions
MyKey[®]
Personal Safety System[™] with dual-stage front airbags²
Safety Canopy[®] System with side-curtain airbags² and rollover sensor
SecuriLock[®] Passive Anti-Theft System
Side-intrusion door beams
SOS Post-Crash Alert System[™]
Tire Pressure Monitoring System (excludes spare)



XLS

Equipment Group 100A
Includes all standard features, plus:

Mechanical

2.5L Duratec[®] I-4 engine
5-speed manual transmission

Seating

Cloth seats

Interior

AM/FM stereo/single-CD player with 4 speakers

Exterior

16" cast-aluminum wheels with P235/70R16 all-season BSW tires
Black door handles and sideview mirrors
Chrome upper grille, body-color lower grille



XLT

Equipment Group 200A
Includes select XLS features, plus:

Mechanical

6-speed automatic transmission

Seating

6-way power driver's seat
Premium-grade cloth seats

Interior

Auto-dimming rearview mirror
Compass and outside temperature display
Front and rear color-keyed carpeted floor mats
Illuminated visor vanity mirrors
Leather-wrapped steering wheel with secondary audio controls
Overhead console with dual storage bins
SiriusXM Satellite Radio with 6-month trial subscription

Exterior

Automatic headlamps
Black roof side rails
Front fog lamps
Privacy glass (rear doors, quarter windows and rear window)
SecuriCode[™] keyless entry keypad

Horsepower, Torque & EPA-Estimated Fuel Economy³

Gas-Powered Escape

2.5L Duratec I-4 Engine 5-speed manual (XLS) 6-speed automatic FWD (XLS, XLT, Limited) 4WD (XLT, Limited)	Horsepower: 171 @ 6,000 rpm 23 city/28 hwy/25 combined mpg	Torque (lb.-ft.): 171 @ 4,500 rpm
3.0L Duratec V6 FFV Engine 6-speed automatic FWD (XLT, Limited) 4WD (XLT, Limited)	Horsepower: 240 @ 6,550 rpm 19 city/25 hwy/21 combined mpg 18 city/23 hwy/20 combined mpg	Torque: 223 @ 4,300 rpm

Gas-Electric-Powered Escape Hybrid

2.5L i-VCT Atkinson-Cycle I-4 Engine Permanent-Magnet AC-Synchronous Electric Motor (Hybrid, Hybrid Limited) Electronically controlled continuously variable transmission (eCVT) FWD 4WD	Net horsepower: 177 Horsepower: 155 @ 6,000 rpm Horsepower: 94 @ 5,000 rpm 34 city/31 hwy/32 combined mpg 30 city/27 hwy/29 combined mpg	Torque: 136 @ 4,500 rpm
---	--	-------------------------

¹Under normal driving conditions with routine fluid and filter changes. ²Always wear your safety belt and secure children in the rear seat. ³Fuel economy when operating on E85 will yield different values than gasoline. See fueleconomy.gov for more information.

Comparisons based on 2011/2012 competitive models (class is Small Utility), publicly available information and Ford certification data at time of release. Some features discussed may be optional. Vehicles shown may contain optional equipment. Features shown may be offered only in combination with other options or subject to additional ordering requirements or limitations. Dimensions shown may vary due to optional features and/or production variability. Following release of the PDF, certain changes in standard equipment, options and the like, or product delays may have occurred which would not be included in these pages. Your Ford Dealer is the best source for up-to-date information. Ford Division reserves the right to change product specifications at any time without incurring obligations.



ESCAPE Standard Features



Limited

Equipment Group 300A
Includes select XLT features, plus:

Seating
Heated front bucket seats
Leather-trimmed seats
Interior
AM/FM stereo/single-CD player with 6 speakers
Ambient lighting
Black center stack finish
Chrome finish on door handles, air vent bezels and shifter knob insert
Ford SYNC® voice-activated, in-vehicle connectivity system
Lockable wet trunk
Retractable cargo area cover
Exterior
16" bright-machined aluminum wheels
Body-color door handles and heated sideview mirrors
Chrome upper and lower grilles, liftgate garnish and roof-rail inserts
Roof-rail crossbars

Hybrid

Equipment Group 500A
Includes select XLT features, plus:

Mechanical
2.5L i-VCT Atkinson-cycle I-4 engine
Permanent-magnet AC-synchronous electric motor
330-volt nickel-metal-hydride (NiMH) battery pack
Electronically controlled continuously variable transmission (eCVT)
Regenerative Braking System
Interior
110-volt AC power outlet
Dual-zone electronic automatic temperature control
SYNC
Exterior
16" unique cast-aluminum wheels
Body-color upper and lower grilles

Hybrid Limited

Equipment Group 501A
Includes select Hybrid features, plus:

Seating
Heated front bucket seats
Leather-trimmed seats
Interior
AM/FM stereo/single-CD player with 6 speakers
Ambient lighting
Chrome finish on door handles, air vent bezels and shifter knob insert
Black center stack finish
Power moonroof
Retractable cargo area cover
Universal garage door opener
Exterior
16" bright-machined aluminum wheels
Body-color door handles and heated sideview mirrors
Chrome upper and lower grilles, liftgate garnish and roof-rail inserts
Rear view camera
Reverse Sensing System
Roof-rail crossbars

Exterior Dimensions	Escape/Hybrid FWD (4WD)
Wheelbase	103.1"
Length	174.7"
Height – Excluding options	67.9" (67.8")/67.7"
Width – Excluding mirrors	71.1"
Width – Including mirrors	81.3"
Width – Mirrors folded	77.9"
Liftover height	29.6"/29.4" (29.5")/(29.6")
Overhang – Front	33.7"
Overhang – Rear	37.8"
Ramp breakover angle	19.0° (18.9°)/18.7°
Angle of approach	19.4°/19.5° (19.3°)/(19.6°)
Angle of departure	28.3°/27.8° (27.7°)

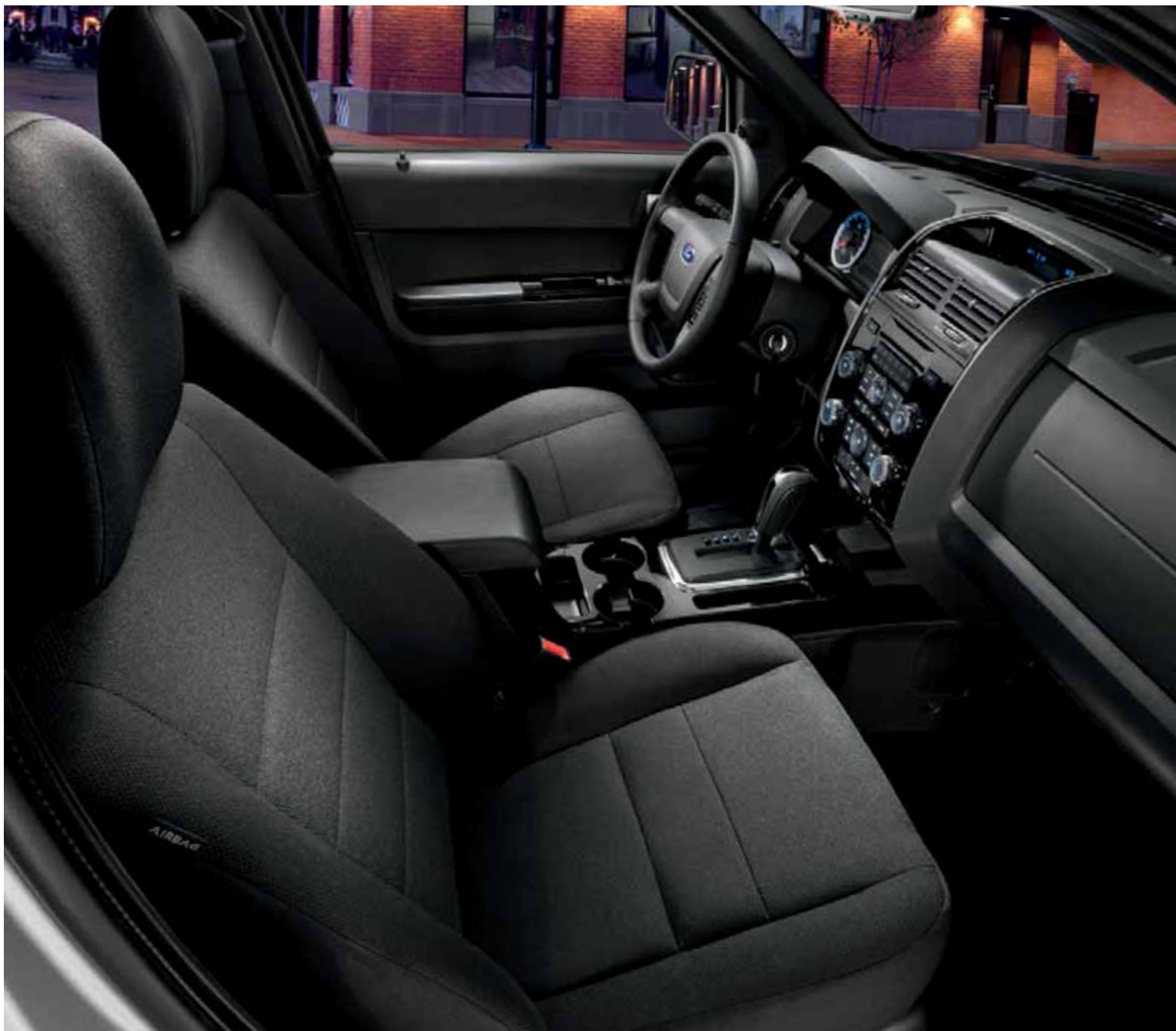
Interior Dimensions	Front/Rear
Head room	40.4"/39.2"
Shoulder room	56.6"/55.9"
Hip room	53.3"/49.1"
Leg room	41.6"/35.6"

Cargo Volume (cu. ft.)	Escape/Hybrid
Behind front seats	67.2/66.4
Behind rear seats	31.4/30.9
Fuel Tank (gal.)	17.5/15.1

Dimensions may vary by trim level. iPod is a registered trademark of Apple Inc. All rights reserved. The Bluetooth word mark is a trademark of the Bluetooth SIG, Inc. Sirius U.S. Satellite Service available in the 48 contiguous U.S.A. and D.C. Sirius, XM and all related marks and logos are trademarks of Sirius XM Radio Inc. Microsoft is a registered trademark of Microsoft Corporation. INVISION is a trademark of Audiovox Corporation. Power Code is a trademark of Code Systems, Inc. THULE is a registered trademark of Thule Sweden AB. HD Radio is a proprietary trademark of iBiquity Digital Corp.



XLS+XLT



XLT. Sport Appearance Package.¹ Premium Charcoal Black cloth trim. Available equipment. || XLT. Premium Stone cloth trim. || XLT. Overhead console. || XLT. Single-CD player. || XLT. Sport Appearance Package.¹ Ingot Silver Metallic. || XLS. Blue Flame Metallic.



¹Available feature.



2012 **ESCAPE+HYBRID** ford.com

XLS+XLT

XLS

Available Equipment Groups

Equipment Group 101A – 6-speed automatic transmission

Equipment Group 102A – 6-speed automatic transmission + **Cargo Package** includes roof side rails with crossbars, retractable cargo area cover and lockable wet trunk

Available Options

Dual head restraint DVD by INVISION™¹

Ford SYNC® voice-activated, in-vehicle connectivity system (n/a with 100A)

Front and rear all-weather floor mats

Front and rear color-keyed carpeted floor mats

Power Code™ Remote Start System (n/a with 100A)

Vehicle Security System (n/a with Power Code Remote Start System)

XLT

Available Equipment Groups

Equipment Group 201A – **Sun & SYNC Package** includes power moonroof and SYNC

Equipment Group 202A – **Sun & SYNC Package + Cargo Package**

Equipment Group 203A – **Sun & SYNC Package + Cargo Package + Leather Package** includes leather-trimmed seats, heated driver and front-passenger seats, and ambient lighting

Available Packages

Sport Appearance Package includes high-gloss Black grille, lower front appliqué, heated sideview mirrors and liftgate spoiler; blacked-out headlamp treatment; 17" premium Black wheels with machined-finish outer rings and P225/65R17 all-season BSW tires; body-color door handles and rocker moldings; premium Charcoal Black cloth seating (Charcoal Black leather when ordered with 203A); Black interior accents; chrome finish on interior door handles, air vent bezels and shifter knob insert²

Trailer Tow Prep Package includes Class II 3,500-lb. receiver and trailer wiring harness with 4-pin connector (V6 only)

Available Options

17" chrome-clad aluminum wheels with P225/65R17 all-season BSW tires (n/a with Sport Appearance Package)

Dual head restraint DVD by INVISION¹

3.0L Duratec® V6 flex fuel engine

Front and rear all-weather floor mats

Integrated side step bars (n/a with Sport Appearance Package)

Intelligent 4WD (includes OWL tires)

Power Code Remote Start System

Premium Sound System with single-CD player, clock and 7 speakers (including an 8" subwoofer) with 320 watts

SYNC

Vehicle Security System (n/a with Power Code Remote Start System)

Available Ford Custom Accessories

Visit fordaccessories.com to shop the complete collection

Exteriors

XLS

White Suede	1
Ingot Silver Metallic	1
Sterling Gray Metallic	1
Gold Leaf Metallic	1
Toreador Red Metallic	1
Lime Squeeze Metallic	1
Blue Flame Metallic	1
Steel Blue Metallic	1
Black	1

XLT

White Suede	2	3		5	6
Ingot Silver Metallic	2		4	5	7
Sterling Gray Metallic	2		4	5	7
Gold Leaf Metallic		3	4		6 7
Toreador Red Metallic	2	3	4	5	6 7
Lime Squeeze Metallic	2		4	5	7
Blue Flame Metallic	2		4	5	7
Steel Blue Metallic	2	3	4	5	6 7
Black	2	3	4	5	6 7

Interiors

Exterior Colors

	White Suede
	Ingot Silver Metallic
	Sterling Gray Metallic
	Gold Leaf Metallic
	Toreador Red Metallic
	Lime Squeeze Metallic
	Blue Flame Metallic
	Steel Blue Metallic
	Black



16" Cast-Aluminum
Standard on XLS and XLT

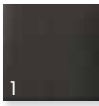
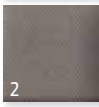
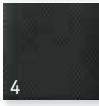


17" Chrome-Clad Aluminum
Optional on XLT



17" Premium Black with
Machined-Finish Outer Ring
Included on XLT Sport
Appearance Package

Interior Colors

	1	Greystone Cloth Standard
	2	Premium Stone Cloth Standard
	3	Premium Camel Cloth Standard
	4	Premium Charcoal Black Cloth Standard
	5	Stone Leather Optional (requires Leather Package)
	6	Camel Leather Optional (requires Leather Package)
	7	Charcoal Black Leather Optional (requires Leather Package)



¹Ford Licensed Accessory. ²Available with Ingot Silver Metallic, Sterling Gray Metallic, Toreador Red Metallic, Steel Blue Metallic or Black exterior colors. Includes roof side rails only when ordered with Cargo Package or Sun & SYNC Package. Not available with 17" chrome-clad aluminum wheels or integrated side step bars.

Colors are representative only. See your dealer for actual paint/trim options.



Limited



Charcoal Black leather trim. Available equipment. | Retractable cargo area cover. | Lockable wet trunk. | Ford SYNC® | Heated front seats. | Black.



Drive one.

2012 **ESCAPE+HYBRID** ford.com

Limited

Available Equipment Groups

Equipment Group 301A – **Moon & Tune Package** includes power moonroof and Premium Sound System with single-CD player, clock and 7 speakers (including an 8" subwoofer) with 320 watts

Equipment Group 302A – **Limited Luxury Package** includes dual-zone electronic automatic temperature control, Reverse Sensing System, rear view camera and universal garage door opener
+ Moon & Tune Package

Available Package

Trailer Tow Prep Package includes Class II 3,500-lb. receiver and trailer wiring harness with 4-pin connector (V6 only)

Available Options

17" chrome-clad aluminum wheels with P225/65R17 all-season BSW tires

Active park assist (available only with 302A)

Cargo area protector

Dual head restraint DVD by INVISION™¹

3.0L Duratec® V6 flex fuel engine

Front and rear all-weather floor mats

Integrated side step bars

Intelligent 4WD

Power Code™ Remote Start System

Vehicle Security System (n/a with Power Code Remote Start System)

Voice-activated Navigation System with nearly 10-gigabyte hard drive, single-disc Premium Sound System, HD Radio™ Technology and SiriusXM Traffic and Travel Link services with 6-month trial subscription (n/a with 300A)

Available Ford Custom Accessories

Visit fordaccessories.com to shop the complete collection

Exteriors

	Interiors	
White Suede	1	2
Ingot Silver Metallic		2
Sterling Gray Metallic	1	2
Gold Leaf Metallic	1	2
Toreador Red Metallic	1	2
Steel Blue Metallic	1	2
Black	1	2



16" Bright-Machined Aluminum
Standard



17" Chrome-Clad Aluminum
Optional

Exterior Colors

	White Suede
	Ingot Silver Metallic
	Sterling Gray Metallic
	Gold Leaf Metallic
	Toreador Red Metallic
	Steel Blue Metallic
	Black

Interior Colors

	Camel Leather Standard
	Charcoal Black Leather Standard



¹Ford Licensed Accessory.

Colors are representative only. See your dealer for actual paint/trim options.



Hybrid+Hybrid Limited



Hybrid Limited. Stone leather trim. Available equipment. || Hybrid Limited. Rear view camera. Navigation System.¹ || 330-volt battery pack. || 110-volt AC power outlet.
|| Hybrid Limited. Ambient lighting. || Hybrid Limited. Steel Blue Metallic.



¹Available feature.



2012 **ESCAPE+HYBRID** ford.com

Hybrid+Hybrid Limited

Hybrid

Available Options

Black roof-rail crossbars
Cargo area protector
Dual head restraint DVD by INVISION™ ¹
Integrated side step bars
Intelligent 4WD
Power Code™ Remote Start System
Power moonroof with sunshade and mini-overhead console
Vehicle Security System (n/a with Power Code Remote Start System)
Voice-activated Navigation System with nearly 10-gigabyte hard drive, single-disc Premium Sound System, HD Radio™ Technology, Hybrid Energy Flow and Power & Efficiency monitors, and SiriusXM Traffic and Travel Link services with 6-month trial subscription

Hybrid Limited

Available Options

Active park assist
Cargo area protector
Dual head restraint DVD by INVISION ¹
Integrated side step bars
Intelligent 4WD
Power Code Remote Start System
Vehicle Security System (n/a with Power Code Remote Start System)
Voice-activated Navigation System with nearly 10-gigabyte hard drive, single-disc Premium Sound System, HD Radio Technology, Hybrid Energy Flow and Power & Efficiency monitors, and SiriusXM Traffic and Travel Link services with 6-month trial subscription

Available Ford Custom Accessories

Visit fordaccessories.com to shop the complete collection

Exteriors

	1	2
White Suede	1	2
Ingot Silver Metallic	1	2
Lime Squeeze Metallic	1	2
Steel Blue Metallic	1	2
Black	1	2



16" Unique Cast-Aluminum
Standard on Hybrid



16" Bright-Machined Aluminum
Standard on Hybrid Limited

Exterior Colors

	White Suede
	Ingot Silver Metallic
	Lime Squeeze Metallic
	Steel Blue Metallic
	Black

Interior Colors

	Premium Stone Cloth Standard on Hybrid
	Stone Leather Standard on Hybrid Limited



¹Ford Licensed Accessory.

Colors are representative only. See your dealer for actual paint/trim options.



Drive one.



QUALITY, GREEN, SAFE AND SMART.

ford.com

New Vehicle Limited Warranty. We want your Ford Escape or Escape Hybrid ownership experience to be the best it can be. Under this warranty, your new vehicle comes with 3-year/36,000-mile bumper-to-bumper coverage, 5-year/60,000-mile Powertrain Warranty coverage, 5-year/50,000-mile safety restraint coverage, and 5-year/unlimited-mile corrosion (perforation) coverage – all with no deductible. Escape Hybrid is also covered by an 8-year/100,000-mile Hybrid Limited Warranty (10-year/150,000-mile Hybrid Battery Limited Warranty in CA, CT, ME, MA, NJ, NY, RI and VT; see dealer for details). Please ask your Ford Dealer for a copy of these limited warranties. □ **Roadside Assistance.** Covers your vehicle for 5 years or 60,000 miles, so you have the security of knowing that help may be only a phone call away should you run out of fuel, lock yourself out of the vehicle or need towing. Your Ford Dealer can provide complete details on all of these advantages. □ **Ford Credit.** Get the ride you want. Whether you plan to lease or finance, you'll find the choices that are right for you at Ford Credit. Ask your Ford Dealer for details or check us out at fordcredit.com. □ **Ford Extended Service Plan.** For a purchase or lease, the Ford Extended Service Plan (ESP) gives you "Peace-of-Mind" protection designed to cover key vehicle components and protect you from the cost of unexpected repairs. Ask your dealer for a Ford ESP, the only service contract backed exclusively by Ford and honored at all Ford Lincoln dealerships. □ **Insurance Services.** Get Ford Motor Company quality in your auto insurance. Our program offers industry-leading benefits and competitive rates. Call 1-877-367-3847, or visit us at fordvip.com for a no-obligation quote. Insurance offered by American Road Services Company (in CA, American Road Insurance Agency), a licensed agency and subsidiary of Ford Motor Company. □ **Genuine Ford Accessories** will be warranted for whichever provides you the greatest benefit: 12 months or 12,000 miles (whichever occurs first), or the remainder of your Bumper-to-Bumper 3-year/36,000-mile New Vehicle Limited Warranty. Ford Licensed Accessories (FLA) are warranted by the accessory manufacturer's warranty. FLA are fully designed and developed by the accessory manufacturer and have not been designed or tested to Ford Motor Company engineering requirements. Contact your Ford Dealer for details and/or a copy of all limited warranties.

