



2013
VOLT



Seven billion people. One road.

Movement is the universal language of personal freedom. Our founder Louis Chevrolet spoke it fluently. As a Swiss immigrant, he came to America with a dream of racing cars. He wished for everyone — not just the rich or entitled — to experience the exhilaration he felt behind the wheel.

In 1911, he began building his first car. One hundred years later, a new Chevrolet is sold every 6.6 seconds. That amounts to 4.76 million vehicles in more than 140 countries — more than Louis Chevrolet could ever have imagined.

The depth of our heritage and passion is evident in everything we do here at Chevrolet. It's ingrained in the bold design, spirited performance, proven durability and exceptional value our drivers enjoy. It empowers us to be leaders in innovation. And it inspires us to continuously raise the bar — today, tomorrow and into what promises to be a bright future.

Currently, we are pioneering new propulsion technologies to meet the demanding energy and environmental needs of a global automotive brand. We're also employing alternative energy sources and investing in fuel-saving technologies to help reduce our carbon footprint with the goal of reducing 8 million metric tons of carbon dioxide emissions over the next few years.

Our global reach is expanding, yet our mission remains the same. We want every customer to feel like family — no matter where you are in the world. And no matter where you're going, we want you to enjoy the ride in a Chevrolet.

From the vision of one to the journey of many, Chevy Runs Deep.

Volt shown in Viridian Joule
(extra-cost color) with available features.



The 2012 Chevrolet Volt was recognized by J.D. Power and Associates as the “Highest Ranked Vehicle Appeal among Compact Cars, Two Years in a Row.”¹ The Automotive Performance, Execution and Layout (APEAL) Study looked at the exterior styling, seating and storage space, comfort, convenience and other factors.

¹ The Chevrolet Volt received the highest numerical score among compact cars in the proprietary J.D. Power and Associates 2011 and 2012 Automotive Performance, Execution and Layout (APEAL) Study.[™] Study based on responses from 74,759 new-vehicle owners, measuring 233 models and measures opinions after 90 days of ownership. Proprietary study results are based on experiences and perceptions of owners surveyed February–May 2012. Your experiences may vary. Visit jdpower.com.

HAPPIEST DRIVERS ON THE PLANET



Volt owners are changing the world, one car at a time. And they're having fun along the way. Recently, a group of Michigan area Volt owners were invited to take a gas-free lap around the racetrack on Belle Isle in Detroit. Just another day in the life of a Chevy Volt owner.

THERE ARE MILES AND MILES OF REASONS WHY VOLT OWNERS QUICKLY BECOME VOLT ENTHUSIASTS. BY CHARGING REGULARLY, VOLT OWNERS ARE AVERAGING ABOUT ONE MONTH OR 900 MILES BETWEEN FILL-UPS. WHAT'S NOT TO LOVE?



Elissa, Westland, MI

"This is the first car I have been TOTALLY in love with in every way, shape and form. On a day-to-day basis I am not using gas. I am never at the gas station unless I want some coffee! As a matter of fact, I am taking my savings so I can go to Hawaii."



Noble, Alexandria, VA

"My Volt is the best vehicle I have ever driven. I bought the car because of its efficiency. I bought the car because I could eliminate gas! from my budget, and it's been 4,000 miles since my last trip to the gas station! I absolutely love my Chevy Volt."



Eric, West Nyack, NY

"Almost every day I walk into the office and somebody asks me a question about my Volt. What really blows them away is when I tell them I almost never go to the gas station, despite the fact that they see me driving to work every day. I fill up my Volt maybe once every couple of months! And that feels absolutely wonderful."



Priya, Los Angeles, CA

"Volt is an awesome car. The body style and the interior design and everything is really cool, but more than anything, I love the gas mileage. I am probably going to the gas station about once a month! ... probably less."

Volt shown in Viridian Joule (extra-cost color)
with available features.

CONFIDENCE TO GO THE DISTANCE



IT'S ELECTRIC WHEN YOU WANT IT, GAS WHEN YOU NEED IT

With two sources of energy for propulsion, Volt is unique in the world of electric vehicles. This built-in-America¹ wonder lets you drive gas-free and tailpipe-emissions-free for an EPA-estimated 38 miles. Then enjoy the spontaneity of extending your range, thanks to the gas-powered electric generator that turns on – seamlessly – so you can go up to 380 total miles with a full charge and a full tank of gas.²



900 MILES BETWEEN FILL-UPS

That's right. By charging regularly, Volt owners are averaging 900 miles or about one month between fill-ups.² Since 2010, Volt owners have driven more than 130 million miles, with over 80 million of those miles being electric. And this number is growing every day. Compared to the average new vehicle sold in the United States, Volt owners can save over \$1,300 a year in fuel costs³ without sacrificing driving freedom. See the latest statistics at chevy.com/volt.



TRACK YOUR EFFICIENCY AT MYVOLT.COM

MyVolt.com is your personal website. It's where you can go to check battery charging status, remote start your Volt, and lock and unlock your doors. You can also view your fuel efficiency history, download data, and share information via Facebook® and Twitter.

¹ Volt is assembled in Hamtramck, MI, from U.S. and globally sourced parts. ² EPA-estimated 98 MPGe (electric); 35 MPG city/40 highway (gas). Actual mileage may vary. ³ Based on EPA estimates. Visit fuelconomy.gov for details.



Volt interior shown with available Pebble Beige leather-appointed seats with suede inserts.

THE LUXURY OF TECHNOLOGY



INSIDE YOUR COMFORT ZONE

Volt surrounds you with the luxury of high-tech comforts. It is thoughtfully engineered to constantly connect with you, putting efficiency data, driving mode selections and even music choices at your fingertips. In Chevrolet Volt, everything comes together in an engaging way — with zippy performance and intuitive control.



Volt shown in Silver Ice Metallic
with available features.

PROWESS WITH PURPOSE



AERODYNAMICS TO MAXIMIZE EFFICIENCY

Chevrolet Volt designers used extensive wind tunnel testing to shape everything from the unique closed front grille to the side view mirrors and rear spoiler. This attention to detail gives Volt an extremely low drag coefficient and allows it to slice through the air for maximum efficiency.



A MODERN LOOK THAT TURNS HEADS

Volt is changing minds about dependency on gas — and turning heads with its good looks. The smooth exterior shape of Volt is designed with a purpose — it contributes to the quick and agile performance. These stylish and functional details allow Volt to travel an EPA-estimated 38 miles gas-free and tailpipe-emissions-free!¹

¹EPA-estimated 38-mile all-electric range based on 98 MPGe (electric); 35 MPG city/40 highway (gas). Actual mileage may vary.

COMMAND PERFORMANCE



THE EXHILARATION OF ELECTRIC PROPULSION

Volt boasts a test-track top speed of 100 mph — and the acceleration is quick, smooth and powerful. With no traditional transmission to soak up power, 273 lb.-ft. of low-end torque shoots directly to the tires. In other words, prepare to launch. No wonder owners love how fun Volt is to drive.

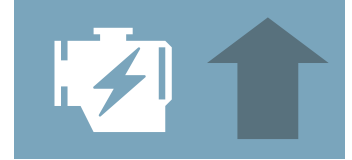
Volt shown in Crystal Red Tintcoat
(extra-cost color) with available features.

CHOOSE YOUR ROAD — THEN CHOOSE YOUR DRIVING MODE



NORMAL MODE

Drive your Volt like a conventional car, only more efficiently. Volt always starts in Normal mode, which is the most efficient for the majority of driving scenarios. And as always, it's electric when you want it, gas when you need it.



HOLD MODE

Hold mode puts the battery's charge on hold — saving it for later. This mode is ideal for those with routes that begin with highway driving, allowing drivers to save their EV (electric) range for stop-and-go city traffic.



SPORT MODE

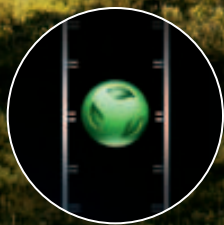
Sport mode delivers heightened responsiveness and feedback. Select Sport mode if you desire more aggressive acceleration, although the car's efficiency may be reduced slightly compared to Normal mode.



MOUNTAIN MODE

If you are about to drive Volt in high altitudes on mountainous terrain, switch to Mountain mode. Mountain mode helps Volt maintain a power reserve for climbing long, steep grades.

ENJOY EFFICIENCY



EFFICIENCY GAUGE FOR INSTANT FEEDBACK

Driving a Volt means fewer tailpipe emissions and less dependence on gas. The Efficiency Gauge gives you an at-a-glance readout of just how efficiently you are driving. Keeping the ball green and in the center of the gauge (see above) means you're maximizing economy.



TIRES WITH AN ANTI-FRICTION MISSION

Low rolling resistance (LRR) tires are key in the world of driving efficiency. Goodyear® Assurance® Fuel Max® tires are classified as LRR and help Volt get up to one more all-electric mile when compared to ordinary tires.



YES, EVEN THE SPEAKERS ARE EFFICIENT

Your ears will be amazed. The available Bose® Energy Efficient Series sound system is 30% smaller, 40% lighter and uses 50% less energy than comparable Bose systems. And it still delivers the level of performance you expect from Bose.



Volt shown in Silver Ice Metallic
with available features.

ADVANCED AMENITIES



INTEGRATE YOUR PHONE, YOUR MUSIC AND MORE

Go ahead — use your connections. Standard Chevrolet MyLink¹ Radio is designed to be as easy to use as possible. Chevrolet MyLink helps you enjoy hands-free instant access to the music library and contacts on your smartphone. Use touch controls or voice commands to access Pandora[®] Internet Radio and Stitcher SmartRadio,^{TM2} and keep your music library organized with Gracenote.[®] Make and receive calls effortlessly while driving using voice recognition — most Bluetooth^{®3}-enabled phones can be fully integrated. You can select radio stations and choose music from your mobile device, all with the sound of your voice. And rely on the available Chevrolet MyLink¹ Radio with Navigation to follow real-time traffic reports through a 3-month trial of SiriusXM NavTraffic.⁴ If you're searching for even more flexibility, choose OnStar^{®5} Turn-by-Turn Navigation, which enables you to download directions from MapQuest[®] through eNav. OnStar is standard for the first three years.



INTERACTIVE SCREENS

The configurable screen in front of the steering wheel takes the place of a traditional instrument cluster. To the driver's right, the 7-inch diagonal color touch-screen can show energy usage and power flow, as well as efficiency feedback on your driving style.

iPhone and iPod are trademarks of Apple Inc., registered in the U.S. and other countries. App Store is a service mark of Apple Inc.

¹ MyLink functionality varies by model. Full functionality requires compatible Bluetooth and smartphone, and USB connectivity for some devices. ² Data plan rates apply. ³ Go to gm.com/bluetooth to find out which phones are compatible with the vehicle. ⁴ If you subscribe after your trial period, subscriptions are continuous until you call SiriusXM to cancel. See SiriusXM Customer Agreement for complete terms at siriusxm.com. Other fees and taxes will apply. All fees and programming are subject to change. For more information about NavTraffic, visit siriusxm.com/navtraffic. XM satellite service is available only in the 48 contiguous United States and Washington, D.C. ⁵ Visit onstar.com for coverage map, details and system limitations. Services vary by model and conditions.

ALWAYS READY TO REPORT



MYCHEVROLET MOBILE APP

Schedule a service appointment online. View the Owner's Manual. Even create a reminder — with a photo and a mark on the map — of where your Volt is parked. The myChevrolet¹ mobile app adds function to your smartphone and convenience to your day.



ONSTAR REMOTELINK MOBILE APP

From your smartphone, check battery level and charge mode, plus verify that the car is plugged in or schedule a charging time. Get a text or email when the battery is fully charged. You can even turn your Volt on to precondition the interior and monitor your tire pressure from anywhere you get cell service. Use RemoteLink^{TM2} to unlock your doors or contact an OnStar Advisor, who is available to help 24/7. Volt comes standard with OnStar³ for the first three years.



VOLT DRIVER CHALLENGE⁴ MOBILE APP (VoltDC)

It's more than an app — it's a tool to help you track the efficiency of your Volt and set goals to maximize it. Accomplish efficiency streaks to earn achievements and even land a spot on the leaderboard. Then share your results with other owners or your social network. It's all in the name of gallons saved. Available late 2012.

¹ Requires iPhone or Android platform. ² Available on select iPhone, Android and BlackBerry devices. Services vary by phone, vehicle and conditions. Requires active OnStar subscription which is standard for the first three years. ³ Visit onstar.com for coverage map, details and system limitations. Services vary by model and conditions. ⁴ Available on select iPhone and Android devices. Requires active OnStar subscription, which is standard for the first three years.



An uncovered look at the 288-cell lithium-ion battery pack.

THE BEAUTY OF THE BATTERY



A NO-WORRIES WARRANTY

Designed and tested for the long haul, the Volt battery is backed by an 8-year/100,000-mile Battery and Voltec™ Component Limited Warranty.¹



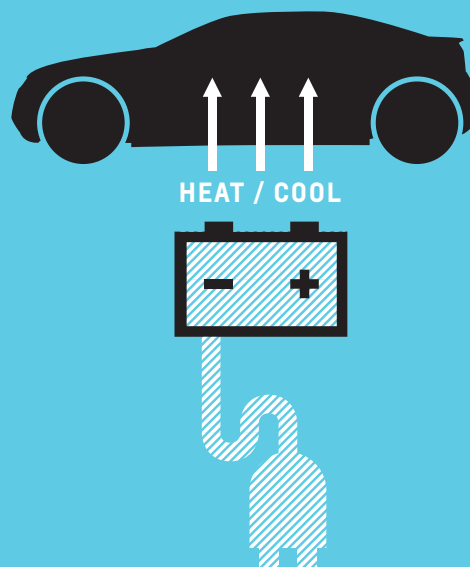
WHAT KIND OF BATTERY DOES VOLT HAVE?

A 16.5-kWh lithium-ion battery pack shaped like a T allows great space efficiency within the Volt design. The battery pack is engineered to be lightweight yet durable, powerful and efficient.

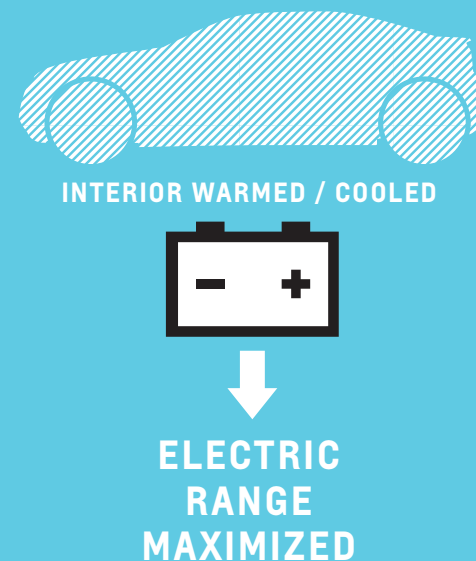
USE YOUR ENERGY WISELY

While you're plugged in, Volt can tap into grid power to heat up or cool down the cabin in preparation for your drive. In cold weather, this also helps warm the battery to an ideal temperature. And because you're using grid power, you can increase your comfort while maximizing your electric driving range. You don't even have to go out in the elements to do it — simply start Volt remotely from your key fob, or use the OnStar RemoteLink² mobile app from your smartphone.

BEFORE DRIVING



WHILE DRIVING



¹ Whichever comes first. See dealer for warranty details. ² Available on select iPhone, Android and BlackBerry devices. Services vary by phone, vehicle and conditions. Requires active OnStar subscription, which is standard for the first three years.

CHAMPION THE CHARGE



HOW TO CHARGE VOLT

You just plug it in. A 120V portable charging unit comes standard. Plug it into an electrical outlet¹ and fully charge the battery in 10–16 hours, depending on charging level and outside temperature. The available professionally installed 240V charging station speeds up charging time to about 4 hours.



HOW VOLT CAPTURES ENERGY

This car would never let perfectly good energy go to waste. Under normal driving conditions, when you use the brakes or even just coast off-throttle, a process called regenerative braking helps some of the recaptured energy be converted into electricity and stored in the battery.



HOW YOUR SMARTPHONE HELPS YOU CHARGE

Use the OnStar RemoteLink² mobile app to view the battery's charge level. Plus, you can program a charging schedule based on times of day when electricity rates are lowest. According to the U.S. Department of Energy, lower rates are usually from around 9 p.m. to 6 a.m. Some utility companies offer lower electricity rates for vehicles charging during off-peak periods.³

¹ Using the portable 120V charge cord will take approximately 16 hours at the 8-amp default setting, and can be reduced to 10 hours at the 12-amp setting. ² Available on select iPhone, Android and BlackBerry devices. Services vary by phone, vehicle and conditions. Requires active OnStar subscription, which is standard for the first three years. ³ To take advantage of a reduced off-peak rate plan, you must sign up through your utility company. Not all utilities offer off-peak rate plans at this time.



PLUG AND PLAY

FIND A CHARGING STATION — WHEREVER YOUR DAY TAKES YOU

Charging Volt doesn't only have to happen overnight in your garage. Thanks to an increase in the number of charging stations across the country, it is now more convenient to charge your Volt.

According to the U.S. Department of Energy, there are more than 10,000 available charging stations nationwide — the most of any alternative fueling station type. Charging stations can now be found at airports, hotels, restaurants, shopping malls, pharmacies, farmers markets and movie theaters.

Cities across the nation are adding charging stations to their infrastructures. Several states are initiating "electric highway" projects to install charging stations along interstate highways.

You'll also find many websites, including that of the Department of Energy (energy.gov), offering maps and search functions to quickly and easily locate the nearest charging station.

And of course, Volt is electric when you want it, gas when you need it, so you can use gas to extend your range between charges.

PROVEN SAFETY TECHNOLOGY



Volt shown in Silver Ice Metallic
with available features.



5-STAR OVERALL VEHICLE SCORE FOR SAFETY

The 2012 Volt received the highest overall score possible from NHTSA: a 5-star Overall Vehicle Score¹ for safety. Eight air bags come standard² and the cabin is reinforced with high-strength steel throughout, making Volt safe and strong.



FEATURES THAT HELP VOLT AVOID COLLISIONS

Volt is your copilot for safe driving. An available rear vision camera helps you see obstacles in your way as you back up at low speeds. Available Forward Collision Alert warns you when you are approaching a vehicle ahead of you too quickly, and Lane Departure Warning conveys when you are leaving your lane without using a turn signal. The standard StabiliTrak[®] Electronic Stability Control System with Traction Control helps you maintain your course in adverse conditions. And because Volt is so quiet, it includes a driver-activated pedestrian-friendly alert.



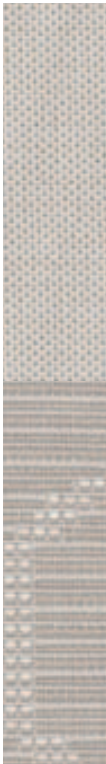
ONSTAR ADDS PEACE OF MIND

If your Volt is in a collision, vehicle sensors can automatically send an alert to an OnStar³ Advisor, who is immediately connected into your vehicle. Using GPS, the Advisor can locate your Volt and request that emergency help be sent right away – even if you are unable to respond. OnStar is standard for the first three years.

¹ Government 5-Star Safety Ratings are part of the National Highway Traffic Safety Administration's (NHTSA's) New Car Assessment Program (www.SaferCar.gov). ² Always use safety belts and the correct restraint for your child's age and size. Even in vehicles equipped with the Passenger Sensing System, children are safer when properly secured in a rear seat in the appropriate infant, child or booster seat. Never place a rear-facing infant restraint in the front seat of any vehicle equipped with a passenger air bag. See the Owner's Manual and the child safety seat instructions for more safety information. ³ Visit onstar.com for coverage map, details and system limitations. Services vary by model and conditions. OnStar acts as a link to existing emergency service providers.



Jet Black Premium Cloth
(standard)



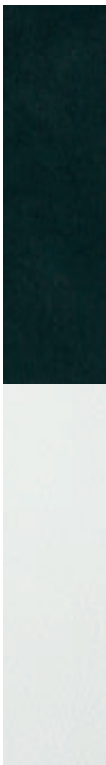
Pebble Beige
Premium Cloth
(standard)



Jet Black Leather Appointments
(available)



Jet Black/Spice Red
Leather Appointments
(available)



Jet Black/Ceramic White
Leather Appointments
(available)



Pebble Beige
Leather Appointments
with Suede Inserts
(available)



Black



Blue Topaz Metallic¹



Silver Topaz Metallic¹



Viridian Joule^{1,2}



Crystal Red Tintcoat^{1,2}



Cyber Gray Metallic



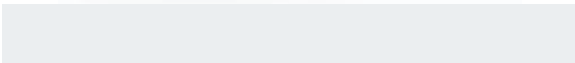
Silver Ice Metallic



White Diamond Tricoat²



Summit White



17" Painted-Aluminum Wheel
(standard)



17" Polished-Aluminum Wheel
(available)



17" Sport Alloy Wheel
with Black Inserts
(available)

¹ Not available with Jet Black/Spice Red interior. ² Extra-cost color.

SPECIFICATIONS

■ STANDARD

□ AVAILABLE

EXTERIOR	
Headlamps: Bifunctional halogen projector with Automatic Exterior Lamp Control	■
Mirrors: Heated, power-adjustable, body-color, manual-folding; with integrated turn signal indicators	■
Spoiler: Rear	■
POWERTRAIN	
Battery: Propulsion, lithium-ion (16.5 kWh) Rechargeable Energy Storage System; includes liquid thermal management system with active control	■
Drive mode control switch: Normal, Sport, Mountain and Hold modes	■
Electric drive: Voltec with 149 hp (111 kW) motoring power, 273 lb.-ft. (370 N•m) of motoring torque, 74 hp (55 kW) generator power	■
Engine: Range extender, 1.4L internal combustion with 83 hp (62 kW); requires premium fuel	■
Steering: Electric Power Steering (EPS) assist, variable for low-speed to high-speed maneuvers	■
Suspension: Front, MacPherson strut and rear semi-independent, compound crank	■
SAFETY & SECURITY	
Air bags: ¹ Dual-stage frontal, side-impact and knee for driver and front passenger (includes Passenger Sensing System); roof rail-mounted head-curtain side-impact for front and rear seating positions	■
Brakes: 4-wheel antilock disc with electro-hydraulic power, StabiliTrak and a regenerative system on front brakes	■
Daytime running lamps: LED illumination	■
Enhanced Safety Package 1: Auto-dimming inside rearview mirror, Rear Park Assist and rear vision camera	□
Enhanced Safety Package 2: Front Park Assist, Forward Collision Alert and Lane Departure Warning	□ ²
LATCH (Lower Anchors and Top tethers for CHildren) system	■
OnStar: ³ Directions & Connections Plan (standard for the first three years), includes Automatic Crash Response and Turn-by-Turn Navigation	■
Pedestrian-friendly alert: Driver-activated horn chirp using turn signal lever button	■
StabiliTrak Electronic Stability Control System with Traction Control and Brake Assist	■
Theft-deterrent system: Theft-deterrent alarm with immobilizer	■

INTERIOR	
Automatic climate control: Single-zone	■
Bluetooth® wireless technology ⁴ for select phones	■
Comfort Package: Heated driver and front passenger seats and leather-wrapped steering wheel	□ ⁵
Display: Center 7-inch diagonal LCD touch-screen	■
Door locks: Power-programmable with delayed locking feature and lockout protection	■
Door trim: Premium with layered graphics	□ ⁶
Floor mats: Carpeted front and rear	■
Instrumentation: 7-inch diagonal digital reconfigurable LCD screen, includes Driver Information Center	■
Keyless access: Passive unlock and lock on all doors and liftgate	■
Keyless entry: Remote with extended range	■
Keyless ignition: Engaged with electric push-button start	■
Mirror: Rearview, manual day/night	■
Rearview, auto-dimming	□ ²
MyVolt.com Vehicle Connectivity powered by OnStar ³	■
OnStar RemoteLink mobile app ⁷	■

Premium Trim Package: Leather-appointed seat trim, leather-wrapped steering wheel, heated driver and front passenger seats and removable rear seat armrest with storage	□ ⁸
Remote vehicle starter system	■
Steering wheel: Tilt and telescoping	■
Windows: Power with express-down on all, driver express-up with anti-pinch override	■

SEATING	
Driver and front passenger buckets with reclining seatbacks and adjustable head restraints	■
Front and rear, leather-appointed seat trim	□ ⁹
Heated seats: Driver and front passenger; includes auto-heated seats (selectable automatic activation)	□ ¹⁰
Rear seat with 40/40 split-folding seatback	■

AUDIO SYSTEMS	
6-speaker sound system	■
Auxiliary audio input jack for iPod®/MP3 player	■
Bose® Energy Efficient Series sound system	□
Chevrolet MyLink ¹¹ Radio: 7-inch diagonal color touch-screen, AM/FM/SiriusXM ¹² stereo, CD/MP3 player, voice recognition, Bluetooth® audio streaming, ⁴ Pandora® Internet Radio and Stitcher SmartRadio™ compatibility, and Gracenote® (Playlist+, Album Art)	■
Chevrolet MyLink ¹¹ Radio with Navigation: Includes Chevrolet MyLink Radio features plus GPS navigation system with three trial months of SiriusXM NavTraffic ¹²	□ ¹³
SiriusXM Satellite Radio ¹² with three trial months	■
SiriusXM Travel Link ¹² with three trial months: Weather forecasts, fuel prices and movie listings	■
USB port ¹⁴	■
WHEELS	
17" painted-aluminum	■
17" polished-aluminum	□
17" Sport Alloy with black inserts	□
Tires: Goodyear® Assurance® Fuel Max,® all-season low rolling resistance 215/55R-17	■

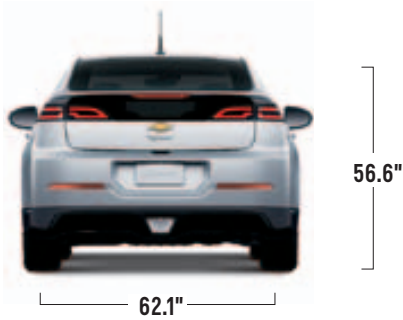
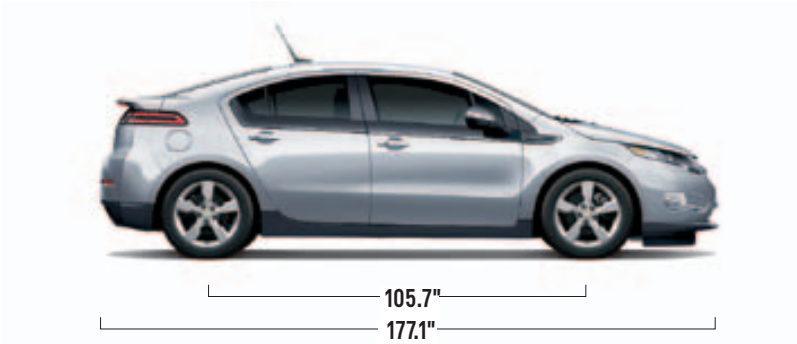
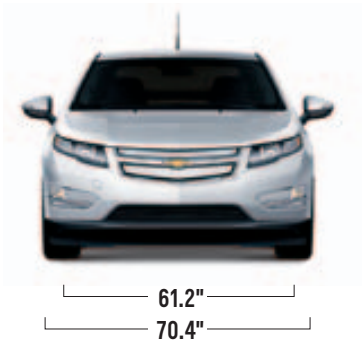
1 Always use safety belts and the correct restraint for your child's age and size. Even in vehicles equipped with the Passenger Sensing System, children are safer when properly secured in a rear seat in the appropriate infant, child or booster seat. Never place a rear-facing infant restraint in the front seat of any vehicle equipped with a passenger air bag. See the Owner's Manual and the child safety seat instructions for more safety information. **2** Requires available Enhanced Safety Package 1. **3** Visit onstar.com for coverage map, details and system limitations. Services vary by model and conditions. OnStar acts as a link to existing emergency service providers. **4** Go to gm.com/bluetooth to find out which phones are compatible with the vehicle. **5** Requires Premium Cloth seats. **6** Requires available leather-appointed seats in Jet Black/Spice Red. **7** Available on select iPhone, Android and BlackBerry devices. Services vary by phone, vehicle and conditions. Requires active OnStar subscription which is standard for three years. **8** Requires available leather-appointed seats. **9** Requires available Premium Trim Package. **10** Requires available Comfort Package or Premium Trim Package. **11** MyLink functionality varies by model. Full functionality requires compatible Bluetooth and smartphone, and USB connectivity for some devices. Data plan rates apply. **12** If you subscribe after your trial period, subscriptions are continuous until you call SiriusXM to cancel. See SiriusXM Customer Agreement for complete terms at siriusxm.com. Other fees and taxes will apply. All fees and programming are subject to change. For more information about NavTraffic, visit siriusxm.com/navtraffic. For more information about Travel Link, visit siriusxm.com/travellink. XM satellite service is available only in the 48 contiguous United States and Washington, D.C. **13** Requires available Bose Energy Efficient Series sound system. **14** Not compatible with all devices.

MAXIMUM CAPACITIES

EPA-ESTIMATED COMBINED FUEL ECONOMY	98 MPGe/37 MPG gas
FUEL TANK (APPROXIMATE)	9.3 gallons

PASSENGER VOLUME	90.3 cubic feet/seats 4
CARGO VOLUME ¹	10.6 cubic feet

DIMENSIONS



DEALER-INSTALLED ACCESSORIES

PERSONALIZE YOUR VOLT AT CHEVY.COM/ACCESSORIES



All-Weather Floor Mats



Door Sill Plate



Available 240-Volt
Fast-Charging Station

The Chevrolet home charging provider, SPX, offers Volt owners a one-stop shopping experience for a variety of charging stations and installation options, as well as information on special programs and incentives. Visit homecharging.spx.com/volt or call 877-805-EVSE (3873) for more information.

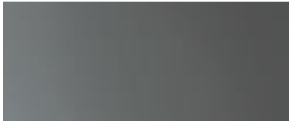
DOOR TRIM OPTIONS



Ceramic White
Accompanies Available
Jet Black/Ceramic White
Leather Appointments



Frosted Nickel
Accompanies Jet Black Premium
Cloth and Available Jet Black
Leather Appointments



Dark Argent
Accompanies Pebble Beige
Premium Cloth



Dark Argent/Pebble Beige Suede
Accompanies Available
Pebble Beige Premium
Leather Appointments
with Suede Inserts



Spice Red with Layered Graphics
Accompanies Available
Jet Black/Spice Red
Leather Appointments

¹ Cargo and load capacity limited by weight and distribution.

WARRANTY INFORMATION

100,000-MILE/5-YEAR TRANSFERABLE POWERTRAIN LIMITED WARRANTY. Every 2013 Chevrolet passenger car, light-duty pickup truck, SUV and crossover comes with a 100,000-mile/5-year (whichever comes first) transferable Powertrain Limited Warranty. Plus, you get 100,000 miles/5 years (whichever comes first) of the 24/7 Roadside Assistance Program, the Courtesy Transportation Program, and much more. See dealer for details.

NEW VEHICLE LIMITED WARRANTY. GM vehicles registered in the USA are covered for 36,000 miles/3 years (whichever comes first). The complete vehicle is covered, including tires, towing to your nearest Chevrolet dealership and cosmetic corrosion resulting from defects. Repairs will be made to correct any vehicle defect, and most warranty repairs will be made at no charge. In addition, rust-through corrosion will be covered for 100,000 miles/6 years (whichever comes first). See dealer for details.

CHEVROLET OWNER CENTER (GMOWNERCENTER.COM/CHEVY). Register your vehicle with the Chevrolet Owner Center and receive benefits such as online access to your vehicle Owner's Manual, maintenance schedule reminders, service history tracking, warranty and service information, safety information, special offers and privileges, and news and events.

BATTERY LIMITED WARRANTY. Volt battery and Voltec components are covered for 100,000 miles/8 years (whichever comes first). The Volt battery warranty covers 161 battery components in addition to the thermal management system, charging system and electric drive components. See dealer for details.

IMPORTANT INFORMATION

ENGINES. Chevrolet products are equipped with engines produced by GM Powertrain or other suppliers to GM worldwide. The engines in Chevrolet products may also be used in other GM makes and models.

ASSEMBLY. Chevrolet vehicles and their components are assembled or produced by different operating units of General Motors, its subsidiaries or suppliers to GM worldwide. We sometimes find it necessary to produce Chevrolet vehicles with different or differently sourced components than originally scheduled. Since some options may be unavailable when your vehicle is assembled, we suggest you verify that your vehicle includes the equipment you ordered and that, if there were changes, they are acceptable to you.

ONSTAR. OnStar services require vehicle electrical system (including battery), wireless service and GPS satellite signals to be available and operating for features to function properly. OnStar acts as a link to existing emergency service providers. Subscription Service Agreement required. Call 1-888-4ONSTAR (1-888-466-7827) or visit onstar.com for OnStar Terms and Conditions, Privacy Policy, details and system limitations.

A NOTE ON CHILD SAFETY. Always use safety belts and the correct restraint for your child's age and size. Even in vehicles equipped with the Passenger Sensing System, children are safer when properly secured in a rear seat in the appropriate infant, child or booster seat. Never place a rear-facing infant restraint in the front seat of any vehicle equipped with a passenger air bag. See the Owner's Manual and child safety seat instructions for more safety information.

IMPORTANT WORDS ABOUT THIS CATALOG. We have tried to make this catalog comprehensive and factual. We reserve the right, however, to make changes at any time, without notice, in prices, colors, materials, equipment, specifications, models and availability. Specifications, dimensions, measurements, ratings and other numbers in this catalog and other printed materials provided at the dealership or affixed to vehicles are approximations based on design and engineering drawings, prototypes and laboratory tests. Your vehicle may differ due to variations in manufacture and equipment. Since some information may have been updated since the time of printing, please check with your Chevrolet dealer for complete details. Chevrolet reserves the right to lengthen or shorten the model year for any product for any reason or to start and end model years at different times. Certain vehicle features may lose their usefulness over time due to obsolescence from technological changes. Unless otherwise noted, all claims based on GM Compact Car segment and latest available competitive information. Excludes other GM vehicles.

SPARE TIRE INFORMATION. There is no standard jack or spare tire in the 2013 Chevrolet Volt. Your vehicle has a tire sealant and compressor kit that uses a liquid tire sealant to temporarily seal up to a one-quarter-inch puncture in the tread area of the tire. After using the tire inflator kit, it is recommended that you take the tire to an authorized retailer for inspection and repair as soon as possible, but at least within 100 miles of driving. The tire sealant cannot seal and inflate sidewall damage, punctures larger than one-quarter inch, or a tire that has unseated from the wheel. The sealant can only be used on one tire and for one time before its expiration date.

CHEVY.COM. Offers shopping tools such as Chevy vehicle information, Build and Price, Find a Vehicle, Request Info, Email Sign-Up, Compare Vehicles, Financial Tools...and much more.

OWNER SERVICES. Chevrolet is committed to enhancing the ownership experience through a wide array of programs. For more information about 24-hour Roadside Assistance, Courtesy Transportation, Customer Assistance, Chevy Safety, GM Mobility, Chevrolet Owner Center, marketing and incentives, as well as services for GM Card members, visit chevy.com.

GMMOBILITY.COM (1-800-323-9935). GM Mobility™ offers financial assistance for eligible adaptive equipment to make automotive travel easier for persons with disabilities or special transportation needs. To learn more about special GM Mobility offers, visit gmmobility.com.

GMCARDMEMBERSERVICES.COM. Did you know about the family of reward credit cards that can help you get a great deal on a new GM car, light-duty truck, SUV or crossover? With a GM reward card, you accrue earnings on every credit card purchase to use toward the purchase or lease of an eligible new GM vehicle. With three cards to choose from, you're sure to find one that suits you best.

ECOLOGIC WINDOW LABEL. As part of our Ecologic™ initiative for environmental responsibility, every 2013 Chevrolet vehicle features a new Ecologic window label detailing some of its fuel-saving technologies, responsible manufacturing processes and end-of-life recyclability. Visit chevrolet.com/ecologic for more information.

GM, the GM Logo, Chevrolet, the Chevrolet Logo, and the slogans, emblems, vehicle model names, vehicle body designs and other marks appearing in this catalog are the trademarks and/or service marks of General Motors, its subsidiaries, affiliates or licensors. ©2012 OnStar. All rights reserved. Sirius, XM and all related marks and logos are trademarks of SiriusXM Radio Inc. Bose is a registered trademark of the Bose Corp. The Bluetooth word mark is a registered trademark owned by Bluetooth SIG, Inc., and any use of such mark by Chevrolet is under license. ©2012 General Motors. All rights reserved. September 2012

OWNERSHIP EXTRAS



chevy.com/warranty



chevy.com/accessories



onstar.com



siriusxm.com



1-888-VOLT-4-YOU



facebook.com/chevrolet



twitter.com/chevyvolt



youtube.com/chevrolet



Volt shown in Black
with available features.



chevy.com