

14EXPLORER



Go Further



Terrain-conquering capability **AND**
class-leading highway mpg.¹

XLT, 2.0L EcoBoost. Sunset Metallic. Available equipment.

¹Class is Large Utilities vs. 2013 competitors. EPA-estimated rating: 20 city/28 hwy/23 combined mpg, 2.0L EcoBoost[®], FWD. Actual mileage will vary.

14EXPLORER
ford.com





Explorer Sport. Get in and break out.

A grin-inducing 365 hp and 350 lb.-ft. of torque – best in its class among V6 engines.¹ An EPA-estimated rating of 22 mpg hwy.² This seriously exhilarating set of numbers comes courtesy of our twin-turbocharged, direct-injected 3.5L EcoBoost® V6 engine. For precise control, Sport also features our 6-speed SelectShift® automatic transmission with racing-inspired paddle shifters. “SPORT” 20" wheels, “EXPLORER” lettering atop its Ebony Black grille, blackout-treatment headlamps and taillamps, an Ebony Black liftgate appliqué, and a well appointed, uniquely leather-trimmed interior establish its signature style. All of it rides on a fully independent sport-tuned suspension with an upgraded front strut tower support, and wider wheels for top-of-the-line performance. Explorer Sport is a standout. Inside and out.



CLASS-BEST V6

350 LB.-FT.¹

365 HP¹

TWIN



TURBOS



PADDLE SHIFTERS

Sport. Ingot Silver Metallic. Available equipment.

¹Class is Large Utilities vs. 2013 competitors. Figures achieved using 93-octane premium unleaded fuel.
²EPA-estimated rating: 16 city/22 hwy/18 combined mpg, 3.5L EcoBoost, 4WD. Actual mileage will vary.

Stay calm and tow steady.

High winds, steep grades and other common towing challenges are no match for Explorer. To help you maintain control of both the vehicle and the trailer, standard trailer sway control automatically reduces engine speed and selectively applies the brakes if trailer sway is detected.¹ Standard hill start assist is particularly useful at traffic lights and on boat launch ramps. It helps prevent the vehicle from rolling downhill when you transition from the brake to the accelerator, whether you're negotiating an incline in Drive or in Reverse. Pairing the Class III Trailer Tow Package with the 3.5L EcoBoost^{®2} or the standard 3.5L Ti-VCT V6 engine empowers Explorer to tow up to 5,000 lbs.³

5,000 LBS.



MAX. TOWING³

CONTROLS



SWAY

HILL START



ASSIST

*Limited. Dark Side Metallic.
Available equipment.*

¹Remember that even advanced technology cannot overcome the laws of physics. It's always possible to lose control of a vehicle due to inappropriate driver input for the conditions. ²Available feature. ³When properly equipped.

14 EXPLORER
ford.com





Turn the dial and keep going.

Challenging conditions? Simple solution: Just turn the dial to match the scene outside. Our highly capable Terrain Management System™¹ is paired with Intelligent 4WD¹ to give you seamless shift-on-the-fly confidence. It's one more way Explorer inspires adventure.



Mud, Rut
Lets the tires spin a bit if needed to help keep you on the go.



Snow, Gravel, Grass
Optimizes traction and control on a wide array of slippery surfaces.



Sand
Allows aggressive wheel spin to help you stay on top.

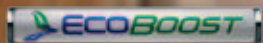


Normal
Ideal for everyday driving on wet or dry paved roads.



Hill Descent Control™
Regulates your speed on steep declines with push-button ease.

¹Available feature.



Power up and experience more.

With our state-of-the-art 2.0L EcoBoost® I-4 engine,¹ Explorer has the best highway fuel economy of any non-hybrid engine in its class.² A 6-speed automatic transmission helps this turbocharged, direct-injection powerhouse deliver plentiful low-end torque for acceleration and passing. The 2.0L is also rated for outstanding fuel economy while cruising. So it's spirited and smart, responding to your changing driving style as needed. Make the most of every drive with EcoBoost.

CLASS-BEST
EPA-ESTIMATED RATING



28 MPG HWY²

TURBOCHARGED



270 LB.-FT.³

240 HP³



Limited. Tuxedo Black Metallic. Available equipment.

¹Available feature. ²EPA-estimated rating of 20 city/28 hwy/23 combined mpg, 2.0L EcoBoost, FWD. Class is Large Utilities vs. 2013 competitors. Actual mileage will vary. ³Figures achieved using 93-octane premium unleaded fuel.

Speak and it listens.

Voice-activated Ford SYNC®¹ with 911 Assist® delivers hands-free calls, music and more in response to simple voice commands. Once paired, it can download your contacts and play music from your phone, MP3, USB or iPod®. Just touch a button on the steering wheel and say things like "Call: The cabin" or "Play playlist: Road trip." SYNC AppLink™² lets you control Pandora®, iHeartAuto™, MLB.com At Bat® and select other apps by voice too. SYNC. Say the word.

SYNC
POWERED BY **Microsoft**



Limited. Charcoal Black leather trim. SYNC with MyFord Touch®. Available equipment.

¹Available feature. Driving while distracted can result in loss of vehicle control. Only use mobile phones and other devices, even with voice commands, when it is safe to do so. Not all features are compatible with all phones. ²SYNC AppLink is available on select models and compatible with select smartphone platforms. SYNC AppLink is not compatible with MyFord Touch. Commands may vary by phone and AppLink software.

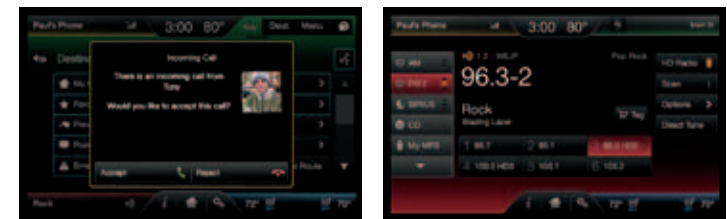
14EXPLORER
ford.com





Touch and it responds.

Via the 8" LCD touch screen on SYNC^{®1} with MyFord Touch^{®1} Simple graphics make it easy to control your phone, entertainment, navigation² and climate. SiriusXM Satellite Radio² includes a 6-month trial subscription that brings you over 130 channels including commercial-free music, sports, news, talk, comedy and entertainment. Pair it with the voice-activated Navigation System,² which includes SiriusXM Traffic and Travel Link as part of the trial, and you'll have the ability to look up fuel prices, check local and national weather, and get detailed information on traffic speed, accidents, construction and road closings. The 12-speaker Audio System from Sony^{®2} features HD Radio[™] Technology and even lets you "Tag" songs for purchase later at the iTunes[®] Store.



¹Available feature. Driving while distracted can result in loss of vehicle control. Only use SYNC/MyFord Touch/other devices, even with voice commands, when it is safe to do so. Some features may be locked out while the vehicle is in gear. Not all features are compatible with all phones. ²Available feature.

14 EXPLORER
ford.com





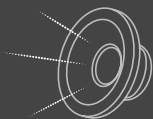
Gather up to 7 and treat them well.

You and your family will travel in style and luxury inside Explorer Limited. Standard leather-trimmed seating features environmentally friendly, supportive, soy-based foam in the seat cushions and seat backs to help conserve limited resources and reduce CO₂ emissions. Up front, 10-way power heated and cooled seats¹ take your comfort to extremes, while heated outboard seats are standard in the 2nd row on Limited this year. A dual-panel moonroof¹ fills the cabin with light. Featuring the most 2nd-row head room in its class² and unsurpassed 3rd-row leg room, this graceful and carefully crafted space is sure to please one and all.

HEATED



STEERING¹



SONY® AUDIO¹

80.7 CU. FT. MAX. CARGO

Limited. Charcoal Black leather trim with perforated inserts. Available equipment.

¹Available feature. ²Class is Large Utilities vs. 2013 competitors.

14 EXPLORER
ford.com





Equip it to go and do what you like.

Bulky sports equipment? No problem thanks to the flexible seating inside Explorer. With the standard 2nd-row 60/40 split seat and the class-exclusive PowerFold^{®1} 3rd-row seat folded flat, you can pack up to 80.7 cu. ft. of gear in back. And even with all rows occupied, you can still stow 21.0 cu. ft.² of cargo in the extra-deep space behind the 3rd-row seat. Treat 2nd-row riders to comfy bucket seats¹ with a pass-through to the 3rd row. Or add the 2nd-row center console¹ for more storage. A power liftgate¹ eases access. And a 110-volt power outlet¹ recharges all sorts of devices. Your needs change. Explorer adapts.

¹Available feature. ²Including rear seat well.

14 EXPLORER
ford.com





Let it assist you here and there.

With its advanced technologies,¹ Explorer can help you parallel park, avoid collisions and more. Class-exclusive² active park assist¹ helps you find a spot, then steers the vehicle into place as you control the gear shifter, and brake and accelerator pedals. BLIS[®] (Blind Spot Information System) with cross-traffic alert¹ uses lights embedded in the sideview mirrors³ to warn of traffic detected in blind spots as you're driving forward or traffic nearing either side of the vehicle as you're slowly backing up. Adaptive cruise control and collision warning with brake support¹ flashes a warning on the windshield, sounds an alarm, and preps the braking system to help if a potential front-end collision is detected. The Lane-Keeping System¹ detects lane markings with a forward-facing camera and shudders the steering wheel to prompt you to steer back toward center if needed – a friendly reminder.

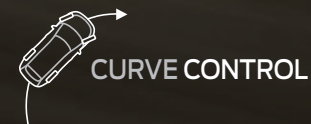
Lane-Keeping System does not control steering. Driver-assist features are supplemental and do not replace the driver's judgment.

¹Available feature. ²Class is Large Utilities vs. 2013 competitors. ³BLIS replaces standard integrated blind spot mirrors.



Relax and travel confidently.

Explorer has earned a "Top Safety Pick" from the Insurance Institute for Highway Safety (IIHS) 3 years in a row (2011-2013). And it's no wonder. In addition to 7 standard airbags, Explorer offers inflatable rear safety belts¹ in its 2nd-row outboard seating positions – the first of their kind in automotive production. Standard Curve Control helps reduce the vehicle's speed by up to 10 mph in approximately 1 second if it senses you're taking a curve too quickly.² Please turn the page for a comprehensive list of Safety & Security features engineered into every 2014 Explorer.



XLT. Deep Impact Blue Metallic.

¹Available feature. ²Remember that even advanced technology cannot overcome the laws of physics. It's always possible to lose control of a vehicle due to inappropriate driver input for the conditions.



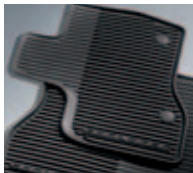
XLt in Ruby Red Metallic Tinted Clearcoat customized with smoked hood and side window deflectors, molded splash guards, roof-mounted crossbars, and cargo box by THULE®¹

Dual headrest DVD by INVISION™¹

All-weather floor mats

Remote Access

Cargo security shade, cargo area protector and rear bumper protector



Exterior

Full vehicle cover¹
Hood protector¹
Locking fuel plug
Racks and carriers¹
Sportz® Tents¹
Trailer towing accessories
Wheel lock kits

Interior

Ash cup/coin holders
Cargo organizers and protectors
Carpeted floor mats
Interior light kit

Electronics

Bumper-mounted warning sensor systems¹
Keyless entry keypad
Portable DVD rear-seat entertainment systems¹
Remote start systems
Vehicle Security System



accessories.ford.com

¹Ford Licensed Accessory.

Explorer Specifications

Standard Features

Mechanical

4-wheel disc Anti-Lock Brake System (ABS)
18.6-gallon fuel tank
Cruise control
Easy Fuel® capless fuel filler
Electric power-assist steering
Hill start assist
Independent front and rear suspension
Trailer sway control

Seating

1st-row bucket seats
2nd-row 60/40 split fold-flat seat with fore/aft adjustable 40 section
3rd-row 50/50 split fold-flat seat

Interior

1st-, 2nd- and 3rd-row dome/map lights
1st-row center console with armrest and storage
12-volt powerpoints (2 in 1st row, 1 in 2nd row and 1 in rear cargo area)
Accessory delay for power features
Adjustable driver and front-passenger sun visors with covered vanity mirrors
Air conditioning with auxiliary rear controls
Cabin air filter

Cargo area hooks

Front-passenger (1) and B-pillar (2) assist handles
Load floor tie-down hooks
Overhead console with sunglasses holder
Power door locks
Power windows
Rear-window defroster
Steering wheel-mounted cruise, audio, and 5-way MyFord® controls (2)
Tilt/telescoping steering column

Exterior

Automatic headlamps
Bi-functional projector-beam halogen headlamps
Dual chrome exhaust tips
LED taillamps
Power sideview mirrors with integrated blind spot mirrors
Privacy glass (rear doors, rear quarter windows and liftgate window)
Rear spoiler
Roof-mounted antenna
Windshield wipers – Front: speed-sensitive, variable-intermittent with washer; rear: 2-speed with washer

Safety & Security

Personal Safety System™ for driver and front passenger includes dual-stage front airbags²; safety belt pretensioners, safety belt energy-management retractors, safety belt usage sensors, driver's seat position sensor, crash severity sensor, restraint control module and Front-Passenger Sensing System
AdvanceTrac® with RSC® (Roll Stability Control™) and Curve Control
Autolock
Battery saver with headlamps-off delay
Belt-Minder® front safety belt reminder
Child-safety rear door locks
Front height-adjustable shoulder safety belts
Front-passenger knee airbag²
Front-seat side airbags²
Illuminated Entry System
LATCH – Lower Anchors and Tether Anchors for Children (2nd-row outboard and 3rd-row passenger-side seating positions)
MyKey®
Safety Canopy® System with side-curtain airbags² and rollover sensor
SecuriLock® Passive Anti-Theft System
SOS Post-Crash Alert System™ unlocks doors, flashes hazard lights and sounds horn after airbag deployment or safety belt pretensioner activation in certain collisions³
Tire Pressure Monitoring System (excludes spare)

Engines/EPA-Estimated Ratings & Dimensions

3.5L Ti-VCT V6

290 hp @ 6,500 rpm
255 lb.-ft. of torque @ 4,000 rpm
6-speed SelectShift® automatic
FWD 17 city/24 hwy/20 combined mpg
4WD 17 city/23 hwy/19 combined mpg

2.0L EcoBoost® I-4

240 hp @ 5,500 rpm⁴
270 lb.-ft. of torque @ 3,000 rpm⁴
6-speed automatic
FWD 20 city/28 hwy/23 combined mpg

3.5L EcoBoost V6

365 hp @ 5,500 rpm⁴
350 lb.-ft. of torque @ 3,500 rpm⁴
6-speed SelectShift automatic
4WD 16 city/22 hwy/18 combined mpg

Exterior

Wheelbase 112.6"
Length 197.1"
Height 70.4"
Width – Excluding mirrors 78.9"
Width – Including mirrors 90.2"
Width – Mirrors folded 82.5"
Liftover height 31.3"

Interior

1st/2nd/3rd Row
Head room 41.4"/40.5"/37.8"
Shoulder room 61.3"/61.0"/50.8"
Hip room 57.3"/56.7"/40.7"
Leg room 40.6"/39.8"/33.2"

Capacities (cu. ft.)

Passenger volume 151.7
Cargo volume behind 1st row 80.7
Cargo volume behind 2nd row 43.8
Cargo volume behind 3rd row⁵ 21.0
Fuel tank (gal.) 18.6
Max. towing (lbs.)⁶ 5,000

²Always wear your safety belt and secure children in the rear seat. ³SOS hardware may become damaged or the battery may lose power in a crash, which could prevent operation. Not all crashes will activate an airbag or safety belt pretensioner. ⁴Figures achieved using 93-octane premium unleaded fuel. ⁵Including rear seat well. ⁶Maximum weight shown is for properly equipped vehicle with required equipment and a 150-lb. driver. Weight of additional options, equipment, passengers and cargo must be deducted from this weight. For additional information, see your Ford Dealer.

14EXPLORER
ford.com





XLT. Charcoal Black leather trim. Available equipment.

XLT. Heated sideview mirrors with LED turn signal indicators and security approach lamps.

XLT. Satin Silver-finish grille.

Class-exclusive MyKey.[®]

Explorer

Equipment Group 100A

Includes all standard features, plus:

Mechanical

3.5L Ti-VCT V6 engine
6-speed SelectShift[®] automatic transmission
58-amp-hr battery
175-amp alternator
Front-wheel drive (FWD)

Seating

1st-row bucket seats with 2-way adjustable head restraints and 6-way power driver's seat with manual lumbar
Cloth seats

Interior

1st- and 2nd-row carpeted floor mats
1st- and 2nd-row door-sill scuff plates with embossed Explorer logo
AM/FM stereo/single-CD player with MP3 capability and 6 speakers
Manual day/night rearview mirror
MyFord[®] with 4.2" color LCD displays in instrument cluster and center stack, and media hub with auxiliary audio input jack
Power windows with one-touch-down driver's side window feature

Exterior

17" steel wheels with 5-spoke wheel covers and P245/65R17 all-season BSW tires
Black door handles, sideview mirrors, roof-rack side rails, lower bodyside cladding and wheel-lip moldings
Foundry Gray-painted grille
Remote Keyless Entry System with 2 integrated keyhead transmitter remotes

Available Options & Package

2.0L EcoBoost[®] I-4 engine with 6-speed automatic transmission (n/a with Intelligent 4WD, Trailer Tow Package or SelectShift automatic transmission)
All-weather floor mats
Ash cup/coin holder with lighter element
Cargo security shade
Class III Trailer Tow Package includes engine oil cooler and 7-/4-pin wiring harness (n/a with 2.0L EcoBoost engine)
Ford SYNC[®] voice-activated, in-vehicle connectivity system includes USB port in media hub (requires SiriusXM Satellite Radio)
Intelligent 4WD with Terrain Management System[™] and Hill Descent Control[™] (n/a with 2.0L EcoBoost engine)
Rear bumper protector
Rear cargo well protector
Roof-rail crossbars
SiriusXM Satellite Radio
Splash guards

XLT

Equipment Group 200A

Includes all Explorer features, plus:

Mechanical

200-amp alternator
Perimeter alarm

Seating

6-way power front-passenger seat with manual lumbar
Unique cloth seats

Interior

Illuminated visor vanity mirrors
Leather-wrapped steering wheel and shift knob
Power windows with front one-touch-up/-down feature
SiriusXM Satellite Radio with 6-month trial subscription
SYNC voice-activated, in-vehicle connectivity system (includes USB port in media hub)

Exterior

18" painted aluminum wheels with P245/60R18 all-season BSW tires
Black lower bodyside cladding with chrome accents
Chrome door handles
Fog lamps
Gloss Black heated sideview mirrors with LED turn signal indicators and security approach lamps
Reverse Sensing System
Satin Silver-finish grille
SecuriCode[™] invisible keypad
Silver roof-rack side rails

Available Equipment Groups

Equipment Group 201A – Auto-dimming rearview mirror + Premium Audio System with 9 speakers + rear view camera + dual-zone electronic automatic temperature control + **Driver Connect Package** includes SYNC with MyFord Touch[®] voice-activated, in-vehicle connectivity system, which includes SYNC Services¹ for Traffic, Directions and Information; two 4.2" LCD configurable displays in instrument cluster; 8" LCD touch screen in center stack; and media hub with 2 USB ports, SD card reader and audio/video input jacks

Equipment Group 202A – Includes all content of 201A + **Comfort Package** includes leather-trimmed seating surfaces; 10-way power, heated driver's seat; and 6-way power, heated front-passenger seat

Available Options & Packages

2.0L EcoBoost I-4 engine with 6-speed automatic transmission (n/a with 20" wheels, Intelligent 4WD, Trailer Tow Package or SelectShift automatic transmission)
20" polished aluminum wheels (requires 201A or 202A; n/a with 2.0L EcoBoost engine)
2nd-row bucket seats (requires 202A)
2nd-row center console (requires 2nd-row bucket seats and 202A)
All-weather floor mats
Ash cup/coin holder with lighter element
BLIS[®] Plus Inflatable Rear Safety Belt Package includes BLIS (Blind Spot Information System) with cross-traffic alert, and inflatable rear safety belts in 2nd-row outboard seating positions (requires 201A or 202A)
Cargo security shade
Class III Trailer Tow Package includes engine oil cooler and 7-/4-pin wiring harness (n/a with 2.0L EcoBoost engine)
Dual headrest DVD by INVISION^{™2}
Dual-panel moonroof (requires 201A or 202A)
Intelligent 4WD with Terrain Management System and Hill Descent Control (n/a with 2.0L EcoBoost engine)
Power liftgate (requires 201A or 202A)
Rear bumper protector
Rear cargo well protector
Roof-rail crossbars
Splash guards
Voice-activated Navigation System with integrated SiriusXM Traffic and Travel Link with 6-month trial subscription³ (requires 202A)
Wheel lock kit (requires 201A or 202A and 20" wheels)



17" Steel with 5-Spoke Wheel Covers
Standard: **Explorer**



18" Painted Aluminum
Standard: **XLT**



20" Polished Aluminum
Available: **XLT**

¹SYNC Services varies by trim level and model year and may require a subscription. Traffic alerts and turn-by-turn directions available in select markets. Message and data rates may apply. Ford Motor Company reserves the right to change or discontinue this product service at any time without prior notification or incurring any future obligation. ²Ford Licensed Accessory. ³SYNC Services is not available with optional Navigation System with SiriusXM Traffic and Travel Link.

Limited

Equipment Group 300A
Includes all XLT features, plus:

Mechanical

- 72-amp-hr battery
- Intelligent Access with push-button start
- Remote Start System

Seating

- 1st-row heated bucket seats with 4-way adjustable head restraints, 10-way power driver's seat (including power lumbar and recline) with memory feature, and 6-way power front-passenger seat with manual lumbar
- 2nd-row 60/40 split fold-flat seat with heated outboard seats, armrest and dual cupholders with fore/aft adjustable 40 section
- Leather-trimmed seating surfaces

Interior

- 1st- and 2nd-row door-sill scuff plates with bright Explorer logo
- 110-volt power outlet
- Ambient lighting
- Audio System from Sony® with 12 speakers and HD Radio™ Technology
- Auto-dimming rearview mirror
- Cargo net
- Dual-zone electronic automatic temperature control
- High-gloss Black center stack accents
- MyFord Touch® with two 4.2" LCD configurable displays in instrument cluster; 8" LCD touch screen in center stack; and media hub with 2 USB ports, SD card reader and audio/video input jacks
- Olive Ash Dark Brown wood-appearance instrument panel appliqué
- Power-adjustable pedals with memory
- Rear view camera
- SYNC voice-activated, in-vehicle connectivity system with SYNC Services¹ for Traffic, Directions and Information
- Universal garage door opener

Exterior

- 20" painted aluminum wheels with P255/50R20 all-season BSW tires
- Body-color grille
- Body-color, power-folding, heated sideview mirrors with LED turn signal indicators, security approach lamps and driver's side memory

Available Equipment Groups

Equipment Group 301A – Voice-activated Navigation System with integrated SiriusXM Traffic and Travel Link with 6-month trial subscription² + power liftgate + heated steering wheel + power-tilt/-telescoping steering column + **Luxury Seating Package** includes PowerFold® 3rd-row seat, perforated leather-trimmed seats, heated and cooled driver and front-passenger seats, and 10-way power front-passenger seat with power lumbar

Equipment Group 302A – Includes all content of 301A + active park assist + Lane-Keeping System + rain-sensing wipers + HID headlamps with auto high beams + **BLIS® Plus Inflatable Rear Safety Belt Package** includes BLIS (Blind Spot Information System) with cross-traffic alert and inflatable rear safety belts in 2nd-row outboard seating positions

Equipment Group 303A – Includes all content of 302A + 2.0L EcoBoost® I-4 engine with 6-speed automatic transmission

Available Options & Packages

- 2.0L EcoBoost I-4 engine with 6-speed automatic transmission (n/a with 302A, Intelligent 4WD, Trailer Tow Package or SelectShift® automatic transmission)
- 20" polished aluminum wheels (requires 301A, 302A or 303A)
- 2nd-row bucket seats
- 2nd-row center console (requires 2nd-row bucket seats)
- Adaptive cruise control and collision warning with brake support (requires 301A, 302A or 303A)
- All-weather floor mats
- Ash cup/coin holder with lighter element
- BLIS Plus Inflatable Rear Safety Belt Package**
- Cargo security shade
- Class III Trailer Tow Package** includes engine oil cooler and 7-/4-pin wiring harness (n/a with 2.0L EcoBoost engine)
- Dual headrest DVD by INVISION™³
- Dual-panel moonroof
- Intelligent 4WD with Terrain Management System™ and Hill Descent Control™ (n/a with 2.0L EcoBoost engine)
- Power liftgate (300A only)
- Rear bumper protector
- Rear cargo well protector
- Roof-rail crossbars
- Splash guards
- Voice-activated Navigation System with integrated SiriusXM Traffic and Travel Link with 6-month trial subscription² (300A only)
- Wheel lock kit



Charcoal Black leather trim with perforated inserts. Equipment Group 301A.⁴

Intelligent Access with push-button start.

Rear view camera.

Rain-sensing wipers.⁴



20" Painted Aluminum
Standard



20" Polished Aluminum
Available

¹SYNC Services varies by trim level and model year and may require a subscription. Traffic alerts and turn-by-turn directions available in select markets. Message and data rates may apply. Ford Motor Company reserves the right to change or discontinue this product service at any time without prior notification or incurring any future obligation. ²SYNC Services is not available with optional Navigation System with SiriusXM Traffic and Travel Link. ³Ford Licensed Accessory. ⁴Available feature.

Sport

Equipment Group 400A
Includes all XLT Equipment Group 202A features, plus:

- Mechanical**
- 3.5L EcoBoost® V6 engine
- 6-speed SelectShift® automatic transmission with paddle shifters
- Intelligent 4WD with Terrain Management System™ and Hill Descent Control™
- Sport-tuned suspension

- Seating**
- 1st-row heated bucket seats with 4-way adjustable head restraints, 10-way power driver's seat (including power lumbar and recline) and 6-way power front-passenger seat with manual lumbar
- 2nd-row 60/40 split fold-flat seat with armrest and dual cupholders with fore/aft adjustable 40 section
- Leather-trimmed seating surfaces

- Interior**
- 1st- and 2nd-row carpeted floor mats with unique badging
- 1st-row illuminated door-sill scuff plates
- Audio System from Sony® with 12 speakers and HD Radio™ Technology
- Cargo net
- Dark Galvano instrument panel and door-trim appliqué

- Exterior**
- 20" machined aluminum wheels with painted pockets and P255/50R20 all-season BSW tires
- Black lower bodyside cladding and roof-rack side rails
- Blackout treatment for headlamps and taillamps
- "EXPLORER" hood badge
- "SPORT" liftgate badge
- Unique Ebony Black-painted grille and liftgate appliqué

Available Equipment Group
Equipment Group 401A – Voice-activated Navigation System with integrated SiriusXM Traffic and Travel Link with 6-month trial subscription¹
+ power liftgate + power-adjustable pedals with memory + power-tilt/-telescoping steering column + heated and cooled driver and front-passenger seats + driver's seat memory feature + 10-way power front-passenger seat with power lumbar + Intelligent Access with push-button start + Remote Start System + ambient lighting + universal garage door opener + 110-volt power outlet + **BLIS® Plus Inflatable Rear Safety Belt Package** includes BLIS (Blind Spot Information System) with cross-traffic alert and inflatable rear safety belts in 2nd-row outboard seating positions

- Available Options & Packages**
- 2nd-row bucket seats
- 2nd-row center console (requires 2nd-row bucket seats)
- Adaptive cruise control and collision warning with brake support (requires 401A)
- All-weather floor mats
- Ash cup/coin holder with lighter element
- BLIS Plus Inflatable Rear Safety Belt Package**
- Cargo security shade
- Class III Trailer Tow Package** includes 7-/4-pin wiring harness
- Dual headrest DVD by INVISION™²
- Dual-panel moonroof
- P265/45ZR20 summer-only tires
- Power liftgate
- Rear bumper protector
- Rear cargo well protector
- Roof-rail crossbars
- Splash guards
- Voice-activated Navigation System with integrated SiriusXM Traffic and Travel Link with 6-month trial subscription¹
- Wheel lock kit



Charcoal Black leather trim with Sienna perforated inserts. Equipment Group 401A³ Available equipment.
"EXPLORER" hood badge. Ebony Black-painted grille.
Blackout-treatment taillamps. "SPORT" liftgate badge.
20" machined aluminum wheels with painted pockets.



20" Machined Aluminum with Painted Pockets
Standard

¹SYNC Services is not available with optional Navigation System with SiriusXM Traffic and Travel Link. ²Ford Licensed Accessory. ³Available feature.

Exteriors



White Platinum Metallic Tri-coat



Oxford White



Ingot Silver Metallic



Sterling Gray Metallic



Ruby Red Metallic Tinted Clearcoat



Sunset Metallic



Kodiak Brown Metallic



Deep Impact Blue Metallic

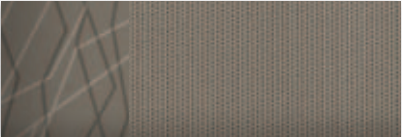


Dark Side Metallic

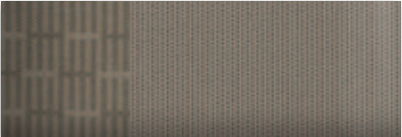


Tuxedo Black Metallic

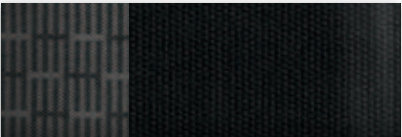
Interiors



1 Medium Light Stone Cloth



2 Medium Light Stone Cloth



3 Charcoal Black Cloth



4 Medium Light Stone Leather



5 Charcoal Black Leather



6 Medium Light Stone Leather with Perforated Inserts



7 Charcoal Black Leather with Pecan Perforated Inserts



8 Charcoal Black Leather with Perforated Inserts

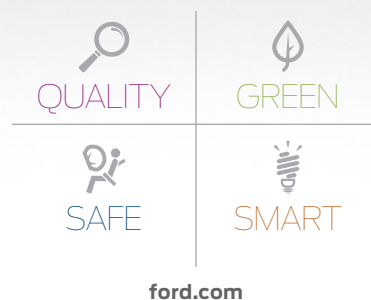


9 Charcoal Black Leather with Sienna Perforated Inserts

Exteriors	Interiors									
	Explorer	XLT				Limited				Sport
White Platinum Metallic Tri-coat ¹		2	3	4	5	4	5	6	7	8
Oxford White	1	2	3	4	5					
Ingot Silver Metallic	1	2	3	4	5	4	5	6	8	8
Sterling Gray Metallic		2	3	4	5	4	5	6	7	8
Ruby Red Metallic Tinted Clearcoat ¹	1	2	3	4	5	4	5	6	8	8
Sunset Metallic		2	3	4	5	4	5	6	8	
Kodiak Brown Metallic		2	3	4	5	4	5	6	7	8
Deep Impact Blue Metallic	1	2	3	4	5	4	5	6	7	8
Dark Side Metallic		2	3	4	5	4	5	6	8	
Tuxedo Black Metallic	1	2	3	4	5	4	5	6	7	8

4, 5 Requires Comfort Package on XLT 6, 7, 8 Requires Luxury Seating Package on Limited

¹Additional charge.
Colors are representative only. See your dealer for actual paint/trim options.



New Vehicle Limited Warranty. We want your Ford Explorer ownership experience to be the best it can be. Under this warranty, your new vehicle comes with 3-year/36,000-mile bumper-to-bumper coverage, 5-year/60,000-mile Powertrain Warranty coverage, 5-year/60,000-mile safety restraint coverage, and 5-year/unlimited-mile corrosion (perforation) coverage – all with no deductible. Please ask your Ford Dealer for a copy of this limited warranty. **Roadside Assistance.** Covers your vehicle for 5 years or 60,000 miles, so you have the security of knowing that help may be only a phone call away should you run out of fuel, lock yourself out of the vehicle or need towing. Your Ford Dealer can provide complete details on all of these advantages. **Ford Credit.** Get the ride you want. Whether you plan to lease or finance, you'll find the choices that are right for you at Ford Credit. Ask your Ford Dealer for details or check us out at fordcredit.com. **Ford Extended Service Plan.** For a purchase or lease, the Ford Extended Service Plan (ESP) gives you "Peace-of-Mind" protection designed to cover key vehicle components and protect you from the cost of unexpected repairs. Ask your dealer for a Ford ESP, the only service contract backed exclusively by Ford and honored at all Ford Lincoln dealerships. **Insurance Services.** Get Ford Motor Company quality in your auto insurance. Our program offers industry-leading benefits and competitive rates. Call 1-877-367-3847, or visit us at fordvip.com for a no-obligation quote. Insurance offered by American Road Services Company (in CA, American Road Insurance Agency), a licensed agency and subsidiary of Ford Motor Company. **Genuine Ford Accessories** will be warranted for whichever provides you the greatest benefit: 12 months or 12,000 miles (whichever occurs first), or the remainder of your Bumper-to-Bumper 3-year/36,000-mile New Vehicle Limited Warranty. Ford Licensed Accessories (FLA) are warranted by the accessory manufacturer's warranty. FLA are fully designed and developed by the accessory manufacturer and have not been designed or tested to Ford Motor Company engineering requirements. Contact your Ford Dealer for details and/or a copy of all limited warranties.

Comparisons based on 2013 competitive models (class is Large Utilities), publicly available information and Ford certification data at time of release. Some features discussed may be optional. Vehicles shown may contain optional equipment. Features shown may be offered only in combination with other options or subject to additional ordering requirements or limitations. Dimensions shown may vary due to optional features and/or production variability. Following release of the PDF, certain changes in standard equipment, options and the like, or product delays may have occurred which would not be included in these pages. Your Ford Dealer is the best source for up-to-date information. Ford Division reserves the right to change product specifications at any time without incurring obligations. **HD Radio** is a proprietary trademark of iBiquity Digital Corp. **iHeartAuto** is a trademark owned by Clear Channel Broadcasting, Inc. All third party uses are authorized under license. **INVISION** is a trademark of Audiovox Corporation. **iPod** and **iTunes** are trademarks of Apple Inc., registered in the U.S. and other countries. **Major League Baseball** trademarks and copyrights are used with permission of MLB Advanced Media, L.P. All rights reserved. **Microsoft** is a registered trademark of Microsoft Corporation. **PANDORA**, the **PANDORA** logo, and the **Pandora** trade dress are trademarks or registered trademarks of Pandora Media, Inc. Used with permission. **SiriusXM** Satellite Radio, **SiriusXM** Traffic and **Travel Link** subscriptions sold separately or as a package after trial period. See **SiriusXM** Customer Agreement for complete terms at siriusxm.com. Fees and programming subject to change. **Sirius** satellite service is available only to those at least 18 years of age in the 48 contiguous USA, DC, and Puerto Rico (with coverage limitations). **Sirius**, **XM** and all related marks and logos are trademarks of **Sirius XM** Radio Inc. **Sony** is a registered trademark of the Sony Corporation. **THULE** is a registered trademark of Thule Sweden AB.

Follow Ford:



facebook.com/fordexplorer



twitter.com/FordExplorer



youtube.com/fordexplorer



gplus.to/FordMotorCompany