

Ranger

1

0

0

2

- Ranger
- Exterior Features
- Interior Features
- Colors
- Comparisons
- Dimensions
- Engine
- Towing/Payload



RANGER EDGE
SUPERCAB 4X4



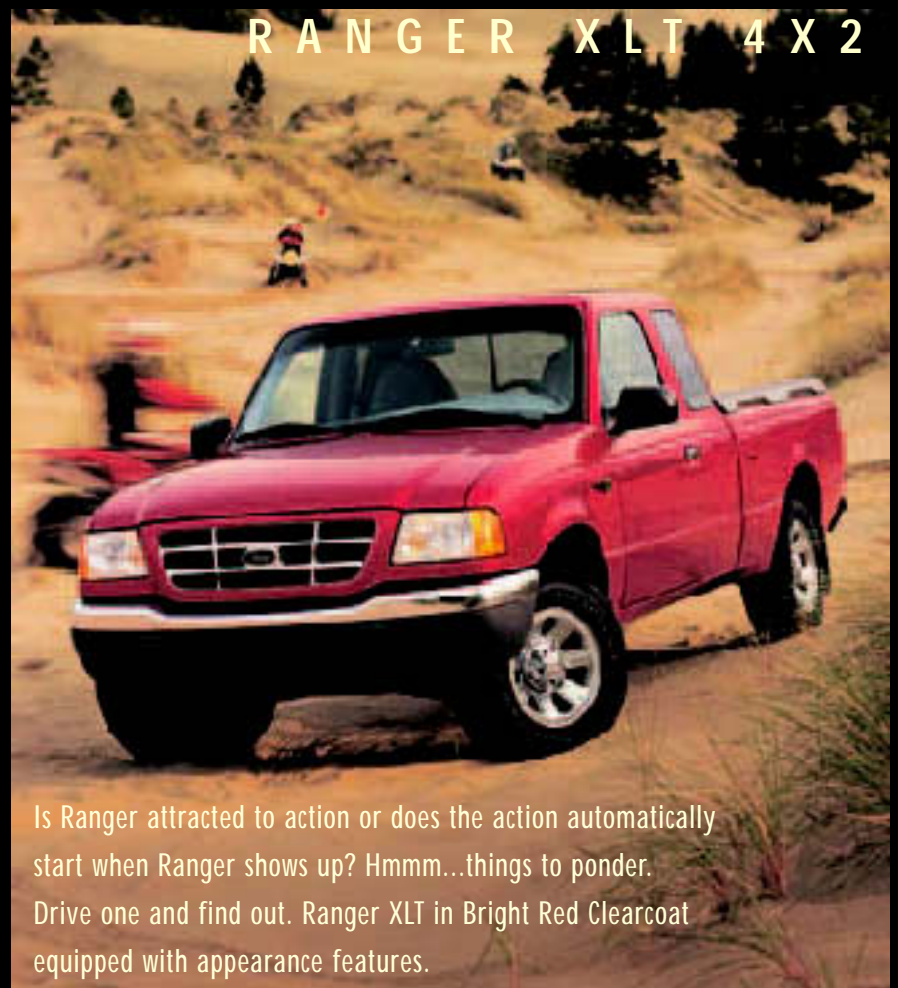
Recipe for freedom. Take one Ranger. Put sand or rock under its feet. Stir gently. And wham. Freedom is just over the next rise. Ranger Edge seen above decked out in muscular SuperCab 4x4 form in shocking Chrome Yellow.

RANGER XLT 4X4



Back roads. Dirt roads. No roads. Ranger XLT drivers set their own pace. Blistering though it is. Ranger XLT SuperCab 4x4 shown with optional dealer-installed hard tonneau cover, in Woodland Green Clearcoat Metallic, getting its paws all wet.

RANGER XLT 4X2



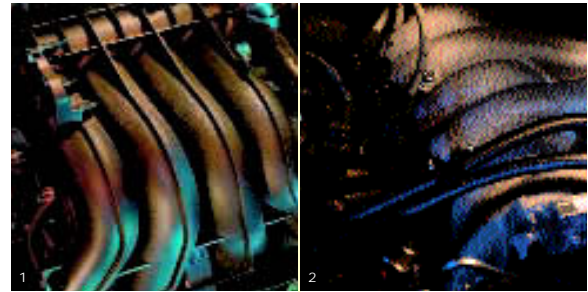
Is Ranger attracted to action or does the action automatically start when Ranger shows up? Hmmm...things to ponder. Drive one and find out. Ranger XLT in Bright Red Clearcoat equipped with appearance features.

RANGER

EXTERIOR FEATURES



1. YOU'LL NEVER BE IN THE FOG WITH THESE GUYS UP FRONT. STANDARD ON EDGE OR XLT 4X4.
2. THIS IS TRICKY. LOWER THE TAILGATE. FLIP OVER THE OPTIONAL BED EXTENDER AND VOILA...YOU'VE ADDED ONTO THE BACK PORCH.
3. AVAILABLE BED RAIL COVERS HELP PROTECT THE EDGE OF THE BED WHEN YOU'RE TOSSING IN YOUR GEAR.
4. THE NEW WAVE IN FUEL DELIVERY SYSTEMS IS NO FUEL AT ALL. BATTERY POWERED, RANGER EV CAN TRAVEL OVER 70 MILES ON JUST ONE CHARGE. (EPA ESTIMATED 38 KW-HR/MI CITY/44 KW-HR/MI HIGHWAY)



1. RANGER XL'S STANDARD 2.5L DOHC I4 CRANKS OUT A STRONG 119 HP.
2. CHASE DOWN THE ACTION WITH RANGER'S OPTIONAL 150-HP 3.0L V6.
3. BRING IT ON, WITH THE NEW OPTIONAL 207-HP 4.0L SOHC V6.



These 15-inch argnet steel wheels make Ranger the hub of excitement in any surroundings.



15-inch painted silver steel wheels with bright center ornament set a shining example for work and play.



16-inch 5-spoke aluminum wheels are the standard for extreme fun and good looks.



15-inch chrome steel wheels. Think of it as part of our highway beautification program.



15-inch silver aluminum wheels. Turn heads wherever you take them.

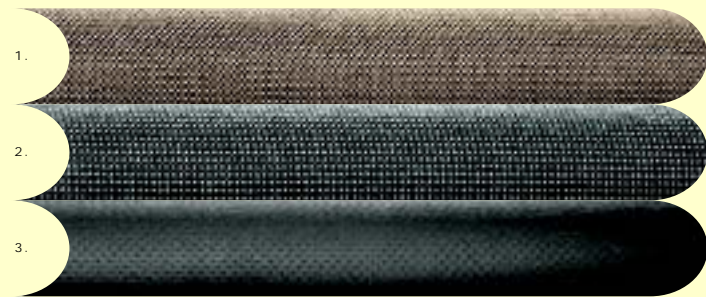
See your Ford dealer for tire and wheel availability

RANGER

INTERIOR FEATURES



1. MUSICAL OPTIONS: A 6-DISC IN-DASH CD PLAYER.
2. STANDARD WITH EDGE: RANGER EVEN GIVES YOU CONVENIENCE FROM THE GROUND UP WITH ITS WASHABLE TEXTURED VINYL FLOORING. EASY CLEANUP AFTER YOU'VE COME IN FROM PLAYING.
3. XLT'S CONVENIENT FLIP OPEN CONSOLE IS THE PERFECT HIDEAWAY PLACE FOR A BUNCH OF YOUR STUFF.
4. RANGER'S OPTIONAL IN-DASH SINGLE CD PLAYER. TURN IT UP.
5. ANOTHER GREAT OPTION: CLIMATE CONTROLS ARE BOLD, SIMPLE AND WELL...COOL.



1. MEDIUM PRAIRIE TAN CLOTH INTERIOR.
2. DARK GRAPHITE CLOTH INTERIOR.
3. DARK GRAPHITE VINYL INTERIOR.

| EXTERIOR COLOR/INTERIOR TRIM | MEDIUM PRAIRIE TAN | DARK GRAPHITE |
|--|--------------------|---------------|
| RANGER XL | | |
| Oxford White Clearcoat | - | • |
| Bright Red Clearcoat | - | • |
| Black Clearcoat | - | • |
| RANGER EDGE | | |
| Chrome Yellow Clearcoat | - | • |
| Oxford White Clearcoat | • | • |
| Bright Red Clearcoat | • | • |
| Bright Island Blue Clearcoat Metallic | • | • |
| Black Clearcoat | • | • |
| RANGER XLT | | |
| Silver Frost Clearcoat Metallic | - | • |
| Oxford White Clearcoat | • | • |
| Harvest Gold Clearcoat Metallic | • | - |
| Bright Red Clearcoat | • | • |
| Deep Wedgewood Blue Clearcoat Metallic | - | • |
| Bright Island Blue Clearcoat Metallic | • | • |
| Toreador Red Clearcoat Metallic | • | • |
| Woodland Green Clearcoat Metallic | • | - |
| Black Clearcoat | • | • |



1. COMFORTABLE, SUPPORTIVE. RANGER EDGE CLOTH/VINYL 60/40 SPLIT BENCH SEAT.
2. CLEAN, FUNCTIONAL INSTRUMENT DESIGN: THE PERFECT PLACE FOR KEEPING TABS ON YOUR EXHILARATION RATE.

RANGER

EXTERIOR COLORS



TOREADOR RED
CLEARCOAT METALLIC



SILVER FROST
CLEARCOAT METALLIC



OXFORD WHITE
CLEARCOAT



DEEP WEDGEWOOD BLUE
CLEARCOAT METALLIC



BRIGHT RED
CLEARCOAT



WOODLAND GREEN
CLEARCOAT METALLIC



BRIGHT ISLAND BLUE
CLEARCOAT METALLIC



HARVEST GOLD
CLEARCOAT METALLIC



CHROME YELLOW
CLEARCOAT METALLIC
(AVAILABLE ONLY ON RANGER EDGE)



BLACK
CLEARCOAT

Comparisons

RANGER OPTIONAL FEATURES

| Some items are not available on all models or may require additional features. See your dealer for specific model availability and restrictions. | XL | Edge | XLT |
|--|----|------|-----|
| 4-Speed Automatic Transmission | • | | • |
| 5-Speed Automatic Transmission | • | • | • |
| Limited Slip Rear Axle (4x4 only) | | • | • |
| Bed Extender (NA w/Hard Tonneau Cover or Flareside) | | • | • |
| Step Bars | | • | • |
| Hard Tonneau Cover w/Bedliner (Styleside only, replaces Bed Rail Covers) | | • | • |
| Trailer Tow Class III | | • | • |
| 4 Cab Doors | | • | • |
| Air Conditioning | • | | |
| Electronic AM/FM Stereo CD Player w/Clock | • | | |
| Electronic AM/FM Stereo 6 CD Player w/Clock | | | • |
| Tilt Steering/Speed Control | | • | • |
| Power Equipment Group: Power Windows/Locks/Mirrors, Remote Keyless Entry | | • | • |
| Door Trim Map Pockets | | • | • |
| Leather-Wrapped Steering Wheel: Included w/Tilt Steering/Speed Control | | | • |

EDGE REGULAR CAB

| Standard Equipment Group | Enhanced Equipment Groups |
|--|--|
| 4x2 3.0L V6 Styleside Standard Group (322A) • All Edge Standard Equipment plus: • 6' Styleside Box • Bed Rail Covers • 15" Silver Styled Steel Wheels | 4x4 3.0L V6 Styleside Plus Group (326A) • 4x2 3.0L V6 Styleside Standard Group (322A) plus: • 5-Speed Automatic Transmission • Select Drive Transfer Case • Heavy Duty Gas Shocks • 16" 5-Spoke Cast Aluminum Wheels • P245/75R16 All-Terrain OWL Tires • Electronic AM/FM Stereo In-Dash 6 CD Player w/Clock • Tilt Steering Wheel with Speed Control |
| 4x2 3.0L V6 Flareside Plus Group (324A) • All Edge Standard Equipment plus: • 6' Flareside Box • 15" Silver Cast Aluminum Wheels • Electronic AM/FM Stereo In-Dash 6 CD Player w/Clock • Tilt Steering Wheel with Speed Control | 4x4 3.0L V6 Flareside Plus Group (328A) • 4x2 3.0L V6 Flareside Plus Group (324A) plus: • 5-Speed Automatic Transmission • Select Drive 2-Speed Transfer Case • Heavy Duty Gas Shocks • 16" 5-Spoke Cast Aluminum Wheels • P245/75R16 All-Terrain OWL Tires • Step Bars |

XLT 4X2 REGULAR CAB

| Standard Equipment Groups | Enhanced Equipment Groups |
|---|--|
| 2.5L I4 Styleside Standard Group (331A) • All XLT Standard Equipment | 2.5L I4 Styleside Appearance Group (333A) • All XLT Standard Equipment • 15" Chrome Styled Steel Wheels • P225/70R15 All-Season OWL Tires • Bed Rail Covers |
| 2.5L I4 Flareside Standard Group (343A) • All XLT Standard Equipment | 2.5L I4 Flareside Appearance Group (344A) • 2.5L I4 Styleside Appearance Group (333A) except Bed Rail Covers |
| 3.0L V6 Styleside Standard Group (332A) • All XLT Standard Equipment • Tilt Steering w/Leather-Wrapped Steering Wheel | 3.0L V6 Styleside Appearance Group (336A) • All XLT Standard Equipment • 5-Speed Automatic Transmission • 15" Chrome Styled Steel Wheels • P225/70R15 All-Season OWL Tires • Electronic AM/FM Stereo Dual Media w/Clock • Power Equipment Group • Bed Rail Covers |
| 3.0L V6 Styleside Standard Group (341A) • All XLT Standard Equipment • 7' Cargo Box: Max Payload 1640 lbs., GVWR 4820 • 5-Speed Automatic Transmission • 20 Gallon Fuel Tank • Tilt Steering/Speed Control • Leather-Wrapped Steering Wheel | 3.0L V6 Flareside Appearance Group (347A) • All XLT Standard Equipment • 5-Speed Automatic Transmission • 15" Chrome Styled Steel Wheels • P225/70R15 All-Season OWL Tires • Electronic AM/FM Stereo Dual Media w/Clock • Power Equipment Group • Tilt Steering/Speed Control • Leather-Wrapped Steering Wheel |

Following the publication of the catalog, certain changes in standard equipment, options and the like, or product delays, may have occurred which would not be included in these pages. Your Ford Dealer is your best source for up-to-date information. Ford Division reserves the right to change product specifications at any time without incurring obligation.

XL 4X2 REGULAR CAB

| Standard Equipment Groups |
|--|
| 2.5L I4 2-Door Styleside Standard Group (312A) • All XL Standard Equipment Plus: • 6' Cargo Box • 15" Argent Styled Steel Wheels • P225/70R15 All-Season BSW Tires |
| 3.0L V6 2-Door Styleside Standard Group (314A) • All XL Standard Equipment Plus: • 6' Cargo Box • 15" Argent Styled Steel Wheels • P225/70R15 All-Season BSW Tires |
| 3.0L V6 2-Door Styleside Standard Group (316A) • All XL Standard Equipment Plus: • 7' Cargo Box: Max. Payload 1640 lbs., GVWR 4820 lbs. • 15" Argent Styled Steel Wheels • P225/70R15 All-Season BSW Tires |

XL 4X2 SUPER CAB

| Standard Equipment Groups |
|--|
| 3.0L V6 2-Door Styleside Standard Group (361A) • All XL Standard Equipment Plus: • 6' Cargo Box • 15" Argent Styled Steel Wheels • P225/70R15 All-Season BSW Tires • Cloth Vinyl 60/40 Split Bench Seat |

EDGE SUPER CAB

| Standard Equipment Groups | Enhanced Equipment Groups |
|---|--|
| 4x2/2-Door 3.0L V6 SC Styleside Standard Group (371A) • Regular Cab 4x2 3.0L V6 Styleside Standard Group (322A) • Vinyl Rear Jump Seats | 4x2/2-Door 3.0L V6 SC Styleside Plus Group (372A) • Super Cab 4x2 3.0L V6 Styleside Standard Group (371A) • 5-Speed Automatic Transmission • 15" Silver Cast Aluminum Wheels • Tilt Steering Wheel with Speed Control • Electronic AM/FM Stereo In-Dash 6 CD Player w/Clock |
| 4x4/4-Door 3.0L V6 Styleside Standard Group (376A) • Super Cab 4x2 3.0L V6 Styleside Standard Group (371A) • 4-Cab Doors • Axle 8.8" w/4.10 Ratio • Select Drive 2-Speed Transfer Case • Heavy Duty Gas Shocks • Sliding Rear Window • Cloth Rear Jump Seats | 4x4/4-Door 4.0L V6 SC Styleside Plus Group (377A) • Super Cab 4x2 3.0L V6 Styleside Plus Group (372A) • 4-Cab Doors • 16" 5-Spoke Cast Aluminum Wheels • P245/75R16 All-Terrain OWL Tires • Axle 8.8" w/4.10 Ratio • Select Drive 2-Speed Transfer Case • Heavy Duty Gas Shocks • Sliding Rear Window • Step Bars • Door Trim Map Pockets • Power Equipment Group |
| 4x2/2-Door 3.0L V6 SC Flareside Plus Group (374A) • Super Cab 4x2 3.0L V6 Styleside Plus Group (372A) | 4x4/4-Door 4.0L V6 SC Flareside Plus Group (378A) • Super Cab 4x4 4.0L V6 Styleside Plus Group (377A) |

XLT 4X2 SUPER CAB

| Standard Equipment Groups | Enhanced Equipment Groups |
|---|--|
| 3.0L V6 2-Door Styleside Standard Group (381A) • All XLT Standard Equipment | 3.0L V6 2-Door Flareside Appearance Group (385A) • Super Cab 3.0L V6 Styleside Appearance Group (382A) except Bed Rail Covers |
| 3.0L V6 2-Door Styleside Appearance Group (382A) • All XLT Standard Equipment Plus: • 5-Speed Automatic Transmission • 15" Chrome Styled Steel Wheels • P225/70R15 All-Season OWL Tires • Sliding Rear Window • Tilt Steering w/Leather-Wrapped Steering Wheel • Bed Rail Covers | 4.0L V6 4-Door Styleside Appearance Group (387A) • Super Cab 3.0L V6 Styleside Appearance Group (382A) Plus: • Electronic AM/FM Stereo Dual Media w/Clock • Power Equipment Group |
| | 4.0L V6 4-Door Flareside Appearance Group (388A) • Super Cab 3.0L V6 Styleside Appearance Group (382A) except Bed Rail Covers and Wheel Lip Moldings |

XLT 4X4 SUPER CAB 4-DOOR

| | |
|--|---|
| 3.0L V6 Styleside Standard Group (392A) • All XLT Standard Equipment Plus: • Select Drive 2-Speed Transfer Case • Heavy Duty Shocks • 15" Silver Cast Aluminum Wheels • P235/75R15 All-Terrain OWL Tires • Bed Rail Covers • Fog Lamps • Honeycomb Grille • Mud Flaps | 3.0L V6 Styleside Off-Road Group (391A) • Super Cab 4x4 3.0L V6 Styleside Standard Group (392A) Plus: • 5-Speed Automatic Transmission • 16" 5-Spoke Cast Aluminum Wheels • P245/75R16 All-Terrain OWL Tires • Bulge Shocks • Skid Plates • Sliding Rear Window • Electronic AM/FM Stereo Dual Media w/Clock • Tilt Steering w/Leather-Wrapped Wheel |
| 4.0L V6 Styleside Standard Group (393A) • Super Cab 4x4 3.0L V6 Styleside Standard Group (392A) Plus: • Sliding Rear Window • Tilt Steering w/Leather-Wrapped Steering Wheel | 4.0L V6 Styleside Off-Road Group (394A) • Super Cab 4x4 3.0L V6 Styleside Off-Road Group (391A) Plus: • Power Equipment Group • Step Bars |
| 3.0L V6 Flareside Standard Group (395A) • Super Cab 4x4 3.0L V6 Styleside Standard Group (392A) except Bed Rail Covers and Wheel Lip Moldings. Plus: • 5-Speed Automatic Transmission • Sliding Rear Window • Tilt Steering w/Leather-Wrapped Steering Wheel | 3.0L V6 Flareside Off-Road Group (397A) • Super Cab 4x4 3.0L V6 Styleside Off-Road Group (391A) except Bed Rail Covers and Wheel Lip Moldings |
| | 4.0L V6 Flareside Off-Road Group (398A) • Super Cab 4x4 3.0L V6 Flareside Off-Road Group (397A) Plus: • Power Equipment Group |

RANGER XL



STANDARD EQUIPMENT

Ranger XL comes standard with a truckload of features that'll have you smiling in no time.

- Driver and front passenger airbags w/manual passenger deactivation switch*
- 4-wheel anti-lock brake system (ABS)
- SecurILock™ passive anti-theft system
- Intermittent speed sensitive wipers
- 4-pin trailer tow wiring harness
- Quick release tailgate
- Rear step bumper
- Solar tint glass
- Floor consolelet w/dual cup holders
- 12 volt powerpoint
- Tachometer
- Cargo tie-down hooks (4)
- Electronic AM/FM stereo w/clock
- Mud flaps
- 60/40 Vinyl split bench seat
- Gas shocks
- Full-size temporary spare tire w/steel wheel
- 5-Speed manual transmission

Vehicle shown with Styleside Standard Group (312A) *Always wear your safety belt and deactivate passenger airbag when using a rear facing child safety seat.

RANGER EDGE



STANDARD EQUIPMENT

Including all that XL offers as standard, the Edge models add (or replace) the following standard equipment:

- Color keyed front and rear step bumper
- Fog lamps
- Mud Flaps
- P235/75R15 All-Terrain OWL tires
- Electronic AM/FM stereo w/single CD player, 4-speaker and digital clock
- Cloth/vinyl 60/40 split bench seat
- Manual styled mirrors
- Honeycomb grille
- Textured vinyl floor covering
- Passenger grab handle
- Front tow hooks
- Wheel lip moldings and bed rail covers (Styleside only)

EQUIPMENT AT NO EXTRA CHARGE

- Air Conditioning to help you keep your cool...wherever you may be.

Vehicle shown with 4x4 4-door Flareside Plus Group (376A)

RANGER XLT



STANDARD EQUIPMENT

Building up from the Edge Standard Equipment, Ranger XLT adds (or replaces) the following:

- Chrome grille (4x2 bars/4x4 honeycomb)
- 15" Painted silver styled steel wheels (4x2)
- 15" Cast aluminum wheels (4x4)
- P225/70R15 All-Season BSW tires (4x2)
- P235/75R15 All-Terrain OWL tires (4x4)
- Courtesy lights (cargo box and map)
- Door panel map pockets
- Color keyed carpeting
- Cloth 60/40 split bench seat
- Electronic AM/FM stereo CD player w/clock
- Chrome bumpers
- Platinum wheel lip moldings (4x4 styleside only)
- Front tow hooks (4x4 only)

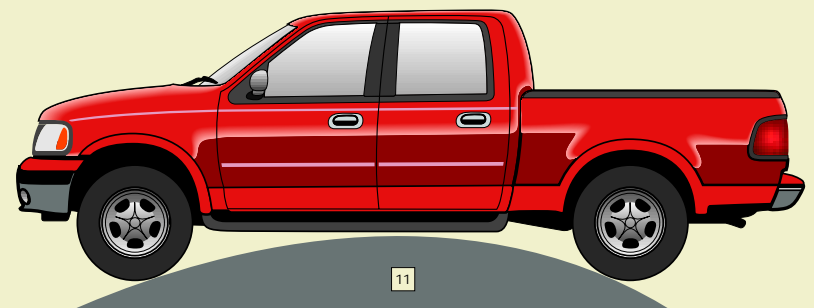
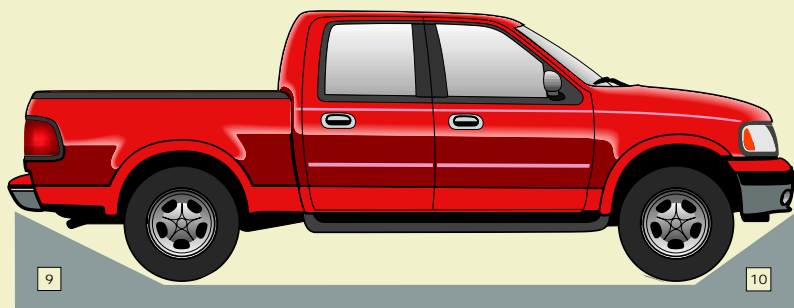
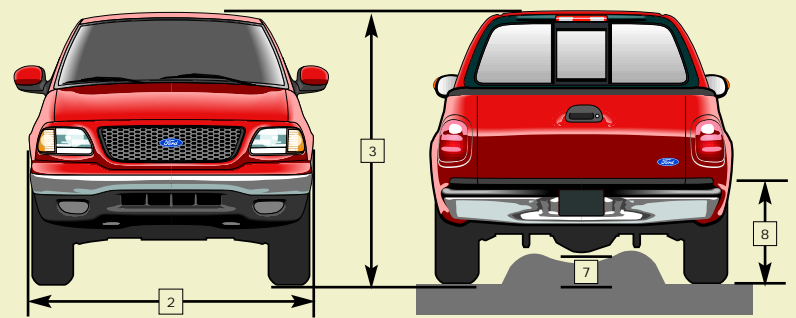
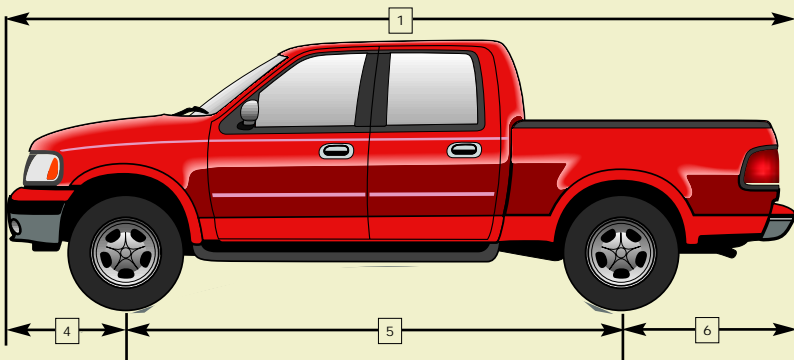
EQUIPMENT AT NO EXTRA CHARGE




- Air Conditioning is also included on all XLT's to keep you comfortable under the heat of the day.

Vehicle shown with 4x4 Super Cab 4-door Flareside "Off-Road" Group (397A)

| DIMENSIONS | RANGER REG. CAB STYLE/SIDE | RANGER SUPERCAB STYLE/SIDE |
|---|----------------------------|----------------------------|
| 1 Overall Length - Inches 4x2 4x4 | 187.5" 188.7" | 202.9" 201.7" |
| 2 Overall Width - Inches 4x2 4x4 | 69.4" 70.3" | 69.4" 70.3" |
| 3 Overall Height - Inches (empty) 4x2 4x4 | 64.9" 67.6" | 64.8" 67.5" |
| 4 Front Overhang - Inches 4x2 4x4 | 33.3" 33.3" | 33.3" 33.3" |
| 5 Wheelbase - Inches 4x2 4x4 | 112.0" 112.0" | 126.0" 126.0" |
| 6 Rear Overhang - Inches 4x2 4x4 | 42.6" 43.8" | 43.9" 42.5" |
| 7 Axle Clearance - Inches (empty) 4x2 4x4 | 6.7" 7.4" | 12.4" 15.6" |
| 8 Load Floor Height - Inches (empty) 4x2 4x4 | 28.5" 31.3" | 27.9" 31.0" |
| 9 Angle of Departure - Degrees (empty) 4x2 4x4 | 16.6° 21.1° | 16.6° 22.6° |
| 10 Angle of Approach - Degrees (empty) 4x2 4x4 | 18.2° 28.2° | 18.2° 30.8° |
| 11 Ramp Breakover Angle - Degrees (empty) 4x2 4x4 | 15.3° 15.7° | 14.5° 16.0° |

Dimensions are for reference only, all wheelbases and box styles/lengths are not represented, see dealer for complete details on all models.



| ENGINES | SPECIFICATIONS | RANGER |
|--|---------------------|------------------|
|  <p>2.5L DOHC I4</p> | Compression Ratio: | 9.37:1 |
| | Horsepower SAE net: | 119 @ 5,000 rpm |
| | Torque SAE net: | 146 @ 3,000 rpm |
|  <p>3.0L OHV V6</p> | Compression Ratio: | 9.14:1 |
| | Horsepower SAE net: | 150 @ 4,750 rpm* |
| | Torque SAE net: | 190 @ 3,650 rpm* |
|  <p>4.0L SOHC V6</p> | Compression Ratio: | 9.7:1 |
| | Horsepower SAE net: | 207 @ 5,250 rpm |
| | Torque SAE net: | 238 @ 3,000 rpm |

*Based on 2000 model year. **With automatic transmission. 235 hp @ 2600 rpm, 1800 rpm w/ manual transmission (275 hp @ 2800 rpm, torque 520 ft. lbs. @1600 w/ manual transmission - late availability).

Built Ford Tough can be best defined by our engines, which have always been able to stand up to the demands of everyday life. And our wide range of gasoline engines, from a 2.5L I4 to the 6.8L V10, put out the muscle you need when you need it the most.

Or maybe you need a diesel that can flat-out handle the big work. The available 7.3L PowerStroke® is not only the largest diesel in the Super Duty F-250/350 class, as well as E-Series, it's turbocharged, handling virtually any task you throw its way.

MAXIMUM PAYLOAD CAPABILITIES

Ranger

Regular Cab – 4x2



1,640 lbs.

Regular Cab – 4x4



1,540 lbs.

SuperCab – 4x2



1,580 lbs.

SuperCab – 4x4



1,500 lbs.

MAXIMUM TOWING CAPABILITIES *

Ranger

Regular Cab – 4x2



6,070 lbs.

Regular Cab – 4x4



5,820 lbs.

SuperCab – 4x2



5,885 lbs.

SuperCab – 4x4



5,620 lbs.

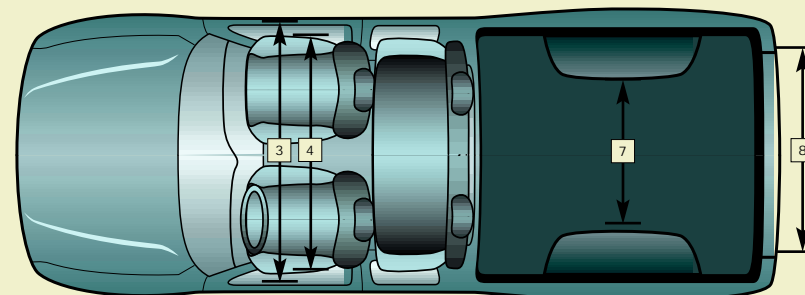
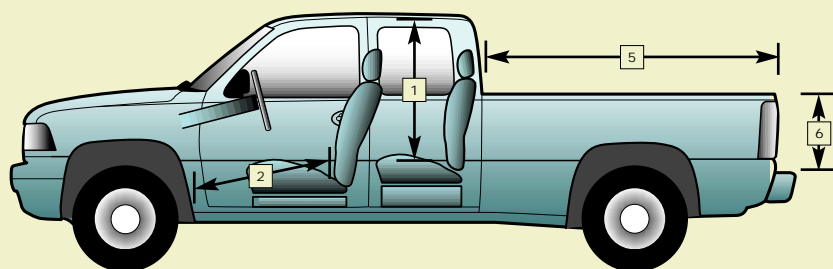
INTERIOR DIMENSIONS

| | RANGER REGULAR CAB | RANGER SUPERCAB |
|-------------------------|--------------------------|--------------------|
| Adult seating capacity | 3 | 5 |
| 1 Head room - Front | 39.2" | 39.2" |
| Second row | - | 35.6 |
| 2 Leg room - Front | 42.4" | 42.2" |
| Second row | - | 40.3" |
| 3 Shoulder room - Front | 54.5" | 53.8" |
| Second row | - | 15.3" |
| 4 Hip room - Front | 52.7" | 52.7" |
| Second row | - | 19.8" |

BOX/CARGO DIMENSIONS

| | | |
|---------------------------------|-----------|-------|
| 5A Nominal Box Length* - SWB/L | 6'7" | 6' |
| 5B Cargo Length | | |
| 6 Cargo Height* to rail/ceiling | 16.5" | 16.5" |
| 7 Width at Wheelwells* | 40.4" | 40.4" |
| 8 Tailgate opening width* | 52.0" | 52.0" |
| Box Volume* - SWB/LWB (cu. ft.) | 37.3/43.4 | 37.3 |
| Door opening height: rear | - | - |
| Door opening width: rear | - | - |

*Box dimensions for Pickup Trucks based on Styleside only.



FORD TRUCKS ARE DESIGNED TO ENSURE BOTH DRIVERS AND PASSENGERS ENJOY COMFORTABLE, USEABLE SPACE NO MATTER WHAT SIZE INTERIOR.

- 1. HEAD ROOM IS MEASURED FROM THE SEAT TO THE HEADLINER.
- 2. LEG ROOM IS MEASURED FROM THE HIP POINT TO UNDEPRESSED ACCELERATOR.
- 3. SHOULDER ROOM REFLECTS DISTANCE FROM DOOR TO DOOR AT SILL.
- 4. HIP ROOM CAPTURES DISTANCE DOOR TO DOOR AT SEAT LEVEL.
- 5A. NOMINAL BOX LENGTH MEASURES THE NOMINAL LENGTH OF THE PICKUP BOX.
- 5B. CARGO LENGTH MEASURES THE DISTANCE FROM THE BACK OF THE 1ST ROW SEAT TO THE FRONT OF THE REAR CARGO DOOR CLOSED.

- 6. CARGO HEIGHT: IN PICK-UP MEASURES FLOOR TO RAIL HEIGHT. IN E-SERIES VANS/WAGONS IT MEASURES FLOOR TO CEILING.
- 7. WIDTH AT WHEEL WELLS IS THE DISTANCE BETWEEN THE REAR WHEEL INTRUSIONS IN THE CARGO AREA.
- 8. TAILGATE OPENING IS THE HORIZONTAL DISTANCE MEASURED AT THE FLOOR WHEN THE TAILGATE IS OPEN.
- BOX VOLUME MEASURES THE CUBIC CAPACITY OF THE CARGO AREA. FORD TRUCKS ARE KNOWN FOR THEIR ABILITY TO WORK AT MAXIMUM CAPACITY UNTIL THE JOB IS DONE. AND SOME NOW FEATURE THE OPTIONAL BOX-EXTENDER THAT ROTATES TO LENGTHEN THE BOX BY ALMOST TWO FEET. THE BIGGER THE BOX, THE QUICKER THE JOB IS DONE.

FORD CREDIT'S RED CARPET LEASE.

MANY LEASE MANAGERS HAVE COMPLETED MANY HOURS OF TRAINING IN A RED CARPET LEASE PROGRAM DESIGNED TO MAKE US THE BEST IN THE BUSINESS. WE THINK YOU'LL FIND A RED CARPET LEASE IS THE BEST WAY TO LEASE.

UNDER THE NEW VEHICLE LIMITED WARRANTY, YOU'LL RECEIVE BUMPER-TO-BUMPER NO-DEDUCTIBLE COVERAGE ON YOUR NEW FORD VEHICLE FOR 3 YEARS/36,000 MILES. YOU'LL ALSO RECEIVE UNLIMITED-MILEAGE, NO-DEDUCTIBLE CORROSION PERFORATION COVERAGE FOR FIVE YEARS. ASK YOUR FORD DEALER FOR A COPY OF THIS WARRANTY.

DURING ITS 3-YEAR/36,000-MILE LIMITED WARRANTY PERIOD, EVERY NEW FORD VEHICLE INCLUDES THE ASSURANCE AND SUPPORT OF A 24-HOUR EMERGENCY ROADSIDE ASSISTANCE PROGRAM. ROADSIDE ASSISTANCE INCLUDES SUCH SERVICES AS FUEL DELIVERY, TIRE CHANGES, JUMP STARTS, AND HELP WHEN YOU ARE LOCKED OUT OF YOUR VEHICLE. ASK YOUR FORD DEALER FOR COMPLETE DETAILS ABOUT THIS PROGRAM.

COMPLETE INFORMATION ON OUR VEHICLE LINEUP IS AVAILABLE ON OUR WEB SITE. TO GET MORE INFORMATION BEFORE YOU VISIT YOUR FORD DEALER, PLEASE VISIT US AT WWW.FORDVEHICLES.COM.

LIKewise, TO GET DETAILS ON VARIOUS FINANCING OPTIONS AVAILABLE ON YOUR NEW FORD VEHICLE, PLEASE VISIT OUR WEB SITE AT WWW.FORDCREDIT.COM.

DOING SO CAN GIVE YOU A HEAD START BEFORE TALKING TO YOUR FORD DEALER ABOUT FINANCING YOUR NEW FORD VEHICLE.

