

CROWN VICTORIA

1

SAFETY

EXTERIOR

EXTERIOR FEATURES

INTERIOR

COLORS AND ACCESSORIES

2





Six Technologies Designed For Enhanced Protection



Our standard Personal Safety System includes (clockwise from upper left) dual-stage front airbags, crash severity sensor, safety belt usage sensors, driver seat position sensor, safety belt energy management retractors and safety belt pretensioners.

If we only designed cars for drivers, our job might be a little easier. When developing a new model, we think very carefully about how that car will affect the people who ride in it. A newborn on her way home from the hospital. The elderly neighbor who needs a lift to the grocery store. Or a friend just going along for the ride. We incorporate truly innovative safety features to make sure you're as confident driving with others as you are driving by yourself. Because of this commitment, Taurus, Windstar, and Crown Victoria all share some very important features. For example, in 2000 they achieved a Five-Star Government Front Crash Test Rating for the driver and front passenger—the highest rating bestowed by the federal government. And Ford's own Personal Safety System tailors safety to drivers and front passengers with innovations like dual-stage front airbags. Special sensors can determine just how much energy should be used to deploy the airbags, depending on the severity of the accident. Now, more than ever, you can really take pleasure in driving. Remember, always wear your safety belt and secure children in the rear seat.

CROWN VICTORIA SAFETY & SECURITY FEATURES	CROWN VICTORIA	
	VICTORIA	LX
Personal Safety System	●	●
Dual-Stage Airbags - Driver and Right Front Passenger*	●	●
Child Safety Door Locks (rear doors)	●	●
Anti-Lock Braking System (power 4-wheel disc)	○	○
All-Speed Electronic Traction Control	○	○
SecuriLock™ Passive Anti-Theft System	●	●
Front Safety Belt Pretensioners	●	●
Front Safety Belt Energy Management Retractors	●	●

Standard ● Optional ○
 *Always wear your safety belt and secure children in the rear seat.

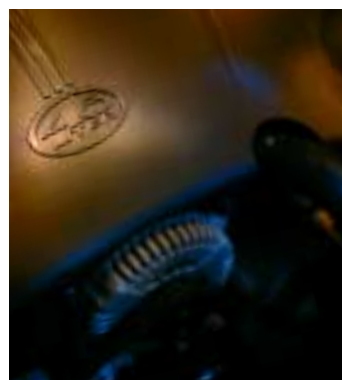


The kind of *pure,*
smart luxury you
never have to *justify.*

EXTERIOR / PERFORMANCE



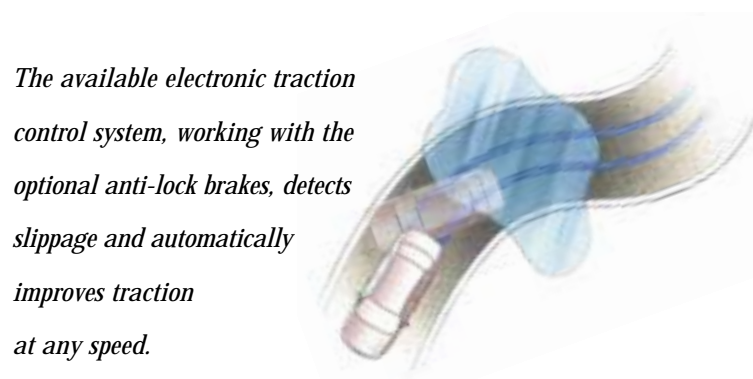
Crown Victoria shown in Silver Frost Clearcoat Metallic.



The 4.6-liter single-overhead cam V8 engine keeps plenty of horsepower in reserve for the times when passing with confidence is a must.



Crown Victoria LX featuring the optional Comfort Plus Group shown in Silver Frost Clearcoat Metallic.



The available electronic traction control system, working with the optional anti-lock brakes, detects slippage and automatically improves traction at any speed.



A little "beep" reassures you that you've locked the car, when you use the remote keyless entry, standard on LX. No more freezing trips out to the garage in your robe and slippers to make sure.

**CROWN VICTORIA
EXTERIOR FEATURES**

	CROWN VICTORIA	LX
Solar Tinted Glass	•	•
Dual Remote Control Side Power Mirrors	•	•
Deluxe Wheel Covers	•	-
Cross-Spoke Chrome Locking Wheel Covers	-	•
Rear Window Defroster	•	•
Stainless Steel Exhaust	•	•
Fuel Tank - 19 gallon	•	•

**CROWN VICTORIA
PERFORMANCE FEATURES**

	CROWN VICTORIA	LX
4.6L SEFI V8 Electronically Controlled Automatic Overdrive Transmission	•	•
Front Stabilizer Bar	•	•
Front Suspension (short/long arm)	•	•
Rear Suspension (Watt's linkage)	•	•
Handling and Performance Package - revised springs, shocks, stabilizer bar P225/60TRx16 BSW "Touring" Tires, 16" lacy-spoke aluminum wheels, rear air springs, dual exhaust	○	○
P225/60SR16 BSW Tires	•	•
P225/60SR16 WSW Tires	○	○

Standard • Optional ○



CROWN VICTORIA



CROWN VICTORIA LX

MAJOR STANDARD FEATURES

Crown Victoria comes standard with a great many features including air conditioning, electronic AM/FM stereo with cassette, power windows/door locks/mirrors, rear window defroster and speed control.

Crown Victoria LX includes power driver's seat, remote keyless entry, visors with illuminated mirrors, driver's seat power lumbar and cross-spoke chrome locking wheel covers.



Crown Victoria LX shown with optional Medium Parchment leather-trimmed seats.



Deluxe wheel covers are standard. And they reflect very high standards, indeed.



12-spoke aluminum wheels are included in the optional LX Comfort Group. After all, luxury touches shouldn't be confined.



Cross-spoke chrome locking wheel covers are standard on LX models. They'll add elegance to whatever place they're parked.



16" lacy-spoke aluminum wheels help bring out the best in Crown Victoria. They're included in the optional LX Comfort Plus and Handling and Performance groups.

**CROWN VICTORIA
INTERIOR FEATURES**

	CROWN VICTORIA	LX
Power Adjustable Pedals	○	○
Air Conditioning	●	●
Power Door Locks/Windows	●	●
Rear Window Defroster	●	●
Speed Control	●	●
Remote Keyless Entry	○	●
Tilt Steering	●	●
Woodgrain Instrument Panel Applique	●	●
Digital Clock in Radio	●	●
Light/Décor Group Visors w/illuminated vanity mirrors, dual beam map/dome light, dual bodyside paint stripes	-	●
LX Comfort Group Electronic automatic temperature control, 12-spoke aluminum wheels, power passenger seat w/lumbar, electronic auto dim mirror w/compass, leather-wrapped steering wheel	-	○
LX Comfort Plus Group Electronic instrumentation, leather seating surfaces, premium electronic AM/FM stereo cassette, 16" lacy-spoke cast aluminum wheels	-	○
Power Driver's Seat	○	●
Cloth Split Bench	●	-
Cloth Split Bench - Luxury Includes power driver's seat recliner and power lumbar	-	●
Leather-Trimmed Split Bench Includes driver/passenger power recliners, power lumbar and vinyl head restraints	-	○
Electronic AM/FM Stereo Cassette	●	●
Electronic AM/FM Stereo w/single CD player	○	○
6-disc CD Changer, Trunk Mounted	-	○
Universal Garage Door Opener	-	○
Floor Mats, Front and Rear	○	○

Standard ● Optional ○

Following publication of the catalog, certain changes in standard equipment, options and the like, or product delays, may have occurred which would not be included in these pages. Your Ford Dealer is the best source for up-to-date information. Ford Division reserves the right to change product specifications at any time without incurring obligations.



1

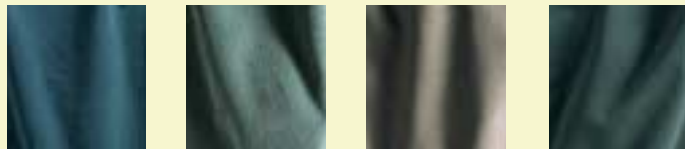


2



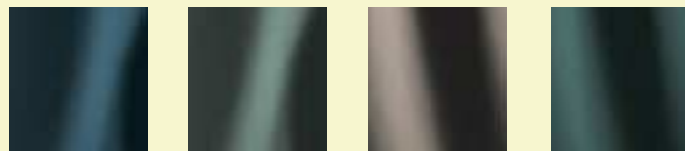
3

1. A TOUCH OF LUXURY WRAPS AROUND YOU IN CROWN VICTORIA.
2. WITH A SIMPLE PUSH OF A BUTTON, THE AVAILABLE POWER ADJUSTABLE PEDALS HELP MAKE DRIVING MORE COMFORTABLE. AND WHEN THAT DRIVE GETS SLIPPERY, THE REASSURANCE OF THE OPTIONAL ALL-SPEED TRACTION CONTROL CAN BE FOUND AGAIN WITH A SIMPLE PUSH OF A BUTTON.
3. A CLEAN, MODERN, EASY TO READ LOOK IS ACHIEVED THROUGH ELECTRONIC INSTRUMENTATION, OFFERED AS PART OF THE LX COMFORT PLUS GROUP.



4

4. CLOTH SEATING DESIGNED TO ENDURE...BOTH FUNCTIONALLY AND STYLISTICALLY.



5

5. AVAILABLE LUXURY LEATHER-TRIMMED SEATS ARE A TREAT EVERY TIME YOU SLIDE BEHIND THE WHEEL.



1



2



3



4



5

1. CROWN VICTORIA HASN'T FORGOTTEN THAT AN INSTRUMENT PANEL IS MEANT TO BE CLEAR AND EASY TO USE. AFTER ALL, YOU WANT TO LOOK AT THE ROAD. NOT BUTTONS.
2. ELECTRONIC AUTOMATIC TEMPERATURE CONTROL PROVIDES A CONSTANT TEMPERATURE AND COMFORT.*
3. THE PREMIUM ELECTRONIC AM/FM STEREO/CASSETTE SOUND SYSTEM MAKES EVEN THE TRAFFIC REPORT EASY TO LISTEN TO.**
4. THIS AUTO-DIM REARVIEW MIRROR HELPS TAKE THE GLARE AWAY FROM REFLECTED LIGHTS.*
5. THE TRUNK-MOUNTED 6-DISC CD CHANGER (OPTIONAL ON LX) GIVES YOU HOURS OF UNREPEATED MUSIC.

*INCLUDED IN THE OPTIONAL LX COMFORT GROUP

**INCLUDED IN THE OPTIONAL LX COMFORT PLUS GROUP

COLORS AND ACCESSORIES



CROWN VICTORIA IN ARIZONA BEIGE
CLEARCOAT METALLIC



CROWN VICTORIA IN LIGHT BLUE
CLEARCOAT METALLIC



CROWN VICTORIA LX IN SILVER FROST
CLEARCOAT METALLIC



CROWN VICTORIA LX IN VIBRANT WHITE
CLEARCOAT



CROWN VICTORIA LX IN BLACK
CLEARCOAT



CROWN VICTORIA LX IN DEEP WEDGEWOOD BLUE
CLEARCOAT METALLIC

DEALER ACCESSORIES



1



2



3



4

1. The personal golf caddy helps keep golf bags from rattling around in the trunk.
2. More storage? You bet. This back-of-seat, multi-pocket organizer keeps things neat.
3. Trunk organizer has a place for everything.
4. Out of sight. Out of mind. Our cargo cover keeps things hidden.

See your dealer for availability.



CROWN VICTORIA IN SPRUCE GREEN
CLEARCOAT METALLIC



CROWN VICTORIA IN TOREADOR RED
CLEARCOAT METALLIC



CROWN VICTORIA LX IN TROPIC GREEN
CLEARCOAT METALLIC



CROWN VICTORIA IN CHESTNUT
CLEARCOAT METALLIC

EXTERIOR COLOR/ INTERIOR TRIM

	Dark Denim Blue	Light Graphite	Medium Parchment	Dark Charcoal
Vibrant White Clearcoat	•	•	•	•
Silver Frost Clearcoat Metallic	•	•	-	•
Chestnut Clearcoat Metallic	-	-	•	-
Arizona Beige Clearcoat Metallic	-	-	•	-
Toreador Red Clearcoat Metallic	-	•	•	•
Light Blue Clearcoat Metallic	•	•	-	-
Tropic Green Clearcoat Metallic	-	•	•	•
Spruce Green Clearcoat Metallic	-	•	•	•
Deep Wedgewood Blue Clearcoat Metallic	•	•	-	-
Black Clearcoat	-	•	•	•

Please note that both Crown Victoria models are available in all exterior colors. Vehicles shown may include optional equipment.

Designing, building and servicing cars and trucks that meet our customers' needs is only part of the Ford equation. Making those vehicles and the facilities they are designed and built in as environmentally responsible as possible is a corporate objective that we take very seriously.

As our environmental pledge says;

"Our actions will demonstrate that we care about preserving the environment for future generations."



Ford Credit's Red Carpet Lease
Many lease managers have completed many hours of training in a Red Carpet Lease program designed to make us the best in the business. We think you'll find a Red Carpet Lease is the best way to lease.

Under the New Vehicle Limited Warranty, you'll receive bumper-to-bumper no-deductible coverage on your new Ford vehicle for 3-years/36,000-miles. You'll also receive unlimited-mileage, no-deductible corrosion perforation coverage for five years. Ask your Ford Dealer for a copy of this warranty.

During its 3-year/36,000-mile limited warranty period, every new Ford vehicle includes the assurance and support of a 24-hour emergency Roadside Assistance program. Roadside Assistance includes such services as fuel delivery, tire changes, jump starts, and help when you are locked out of your vehicle. Ask your Ford Dealer for complete details about this program.

Complete information on our vehicle lineup is available on our web site. To get more information before you visit your Ford Dealer, please visit us at www.fordvehicles.com.

Likewise, to get details on various financing options available on your new Ford vehicle, please visit our web site at www.fordcredit.com. Doing so can give you a head start before talking to your Ford Dealer about financing your new Ford vehicle.

