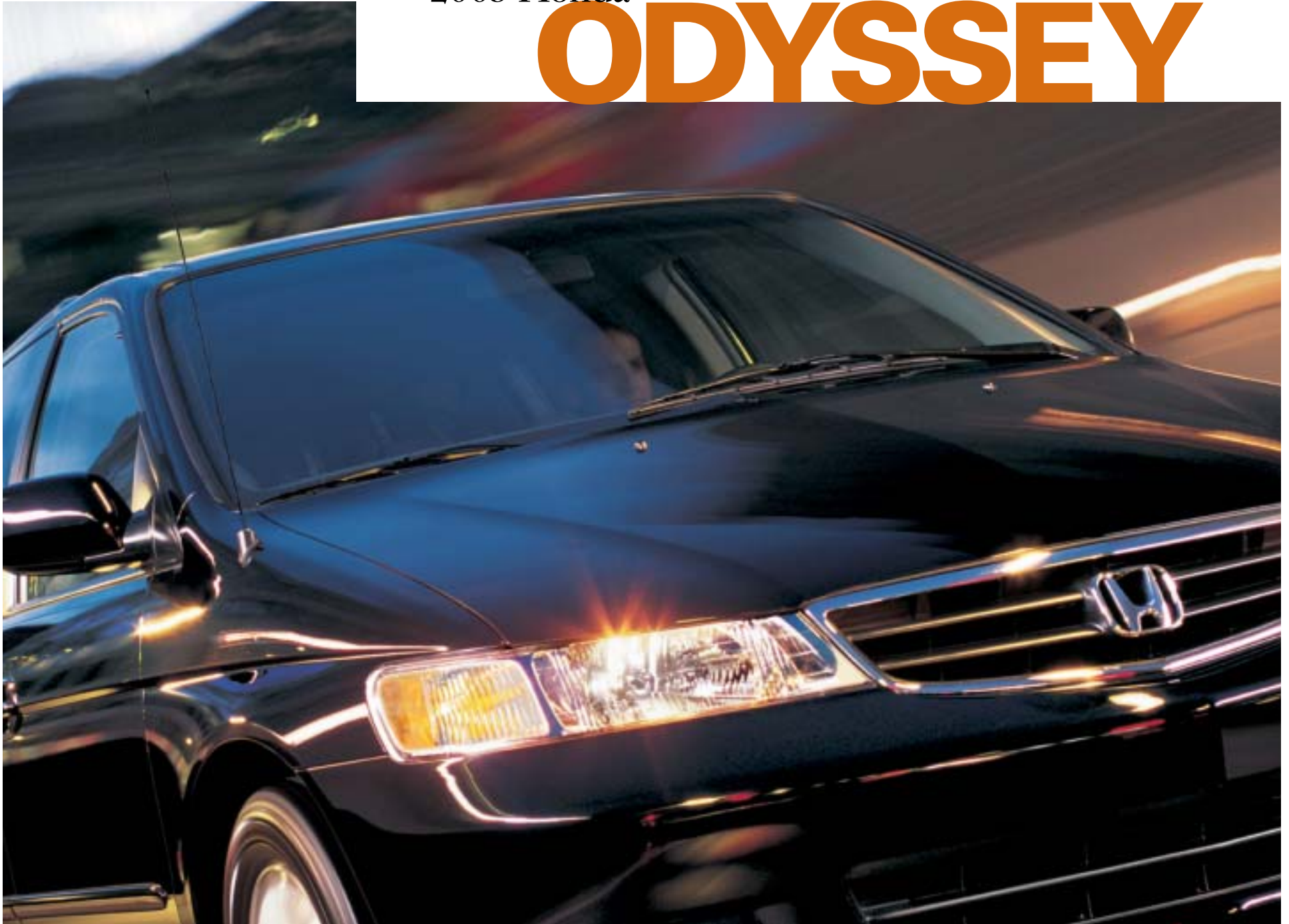


2003 Honda

# ODYSSEY



# MOVE YOURSELF

While you may want a minivan for the obvious reasons—seating capacity and cargo space—there are lots of other reasons to want an Odyssey. To begin with, it earned a **quadruple 5-star** rating from the NHTSA\*, the highest possible rating for frontal and side-impact protection. And for the fourth year in a row, *Automobile Magazine* has named it “**Best Minivan.**” That puts it in a class of one. Which would make Odyssey a safe buy for any family. So if it can please the critics and impress governments, we’re confident Odyssey’s combination of power, handling, safety and versatility can earn a few stars from your family as well.

\*National Highway Traffic Safety Administration frontal crash test: March 1999; side crash test: April 2002.



# SWIFTLY

What separates the Odyssey from all other minivans is the **driving** experience. That's true with every Honda, but responsive handling and good reserves of power are things you don't usually associate with a minivan. Motivated by a **240-hp** SOHC VTEC® V-6 engine and a smooth-shifting 5-speed automatic transmission, Odyssey brings you the kind of performance usually reserved for sporty sedans. With the **4-wheel independent** suspension and precise steering, Odyssey can move you in ways you never expected in a minivan.



Odyssey EX shown in Sandstone Metallic.

## ODYSSEY LX

- 240-hp, 3.5-liter, 24-valve VTEC V-6
- 5-speed automatic transmission
- 4-wheel independent suspension
- Anti-lock braking system (ABS)
- Traction Control System (TCS)
- Dual-stage front airbags (SRS) and front side airbags
- Retractable 3rd-row Magic Seat™
- Front/rear air conditioning
- Immobilizer Theft-Deterrent System

## ODYSSEY EX

All LX features, plus:

- Dual power sliding doors
- Automatic climate control
- AM/FM/CD<sup>1</sup> audio system w/6 speakers
- Driver's seat w/8-way power adjustment
- HomeLink® remote system<sup>2</sup>
- Security system with remote entry
- Steering wheel-mounted audio controls
- 16" alloy wheels
- Roof rails

- Available leather trim package: leather-trimmed interior and heated front seats
- Available Honda Satellite-Linked Navigation System™\*
- Available Honda DVD Entertainment System\*

\*The factory-installed navigation system and DVD Entertainment System are only available separately on EX models with leather. See dealer for details.

# REFINED PERFORMER



Odyssey provides the sort of power, handling and response **unexpected** in a vehicle that can carry seven comfortably. Whether empty or fully loaded, the smooth-revving **3.5-liter V-6** with a 5-speed automatic transmission has the torque to quickly step up to highway speeds and the power reserves to confidently pass slower-moving traffic.

Odyssey EX shown in Starlight Silver Metallic.

# POWER

Odyssey's 240-hp V-6 is just one in a long line of jewel-like engines. The all-aluminum design helps reduce the overall weight of the vehicle, which in turn improves **fuel economy.**<sup>4</sup> While already a model of smoothness, vibration is further filtered out by hydraulic engine mounts. Power and 242 lb.-ft. of torque are delivered to the front wheels through the smooth-shifting **5-speed automatic** transmission. And the Honda Grade Logic Control System selects the gear ratio that's just right in hilly driving.



**The power of efficiency.** Plenty of power isn't the only story from this engine. Odyssey's V-6 is equipped with an SOHC valvetrain and **4 valves per cylinder** for maximum breathing ability. For peak power as well as low-speed response, it also has **variable valve timing and lift electronic control (VTEC)**. All this technology contributes to excellent fuel economy.<sup>4</sup> And the Odyssey's first tune-up isn't scheduled until 105,000 miles.\*

\*Does not apply to fluid and filter changes. See your owner's manual for details.



**Racing improves your Honda.** For over four decades, Honda engineers have gone through an exciting apprenticeship program—racing. In the **pressure of competition**, they learn to come up with clever innovations that ultimately help improve your Honda.



**Precision and stability.** Odyssey faces almost any road with confidence. Standard features include big 4-wheel disc brakes with an **anti-lock braking system (ABS)** plus Electronic Brake Distribution (EBD). Accurate handling is courtesy of the power rack-and-pinion steering.



Odyssey EX shown in Redrock Pearl.



**Take all your toys.** With its power and agility, Odyssey adds a thrill to everyday driving. But on weekends and vacations, it's also a capable ally. Rated at **3,500 lbs.** towing capacity,<sup>3</sup> you can easily take your favorite toys. And with **242 lb.-ft. of torque,** you've got enough motivation at your command to even handle steep terrain.

# ELEGANTLY SPACIOUS



Odyssey EX interior shown in Ivory Leather.



Odyssey's **generous** interior space can easily accommodate seven comfortably. There's plenty of elbow and legroom, and the expansive glass area gives all passengers a great view of the world. **Clever touches** like grocery bag hooks help keep cargo secure, and an available leather-trimmed interior in the EX model makes any trip more pleasant.

# PRACTICAL



Fantasia 2000. © Disney, Inc.

**Movies, music and more.** Honda vehicles have always been entertaining to drive. But the **Honda DVD Entertainment System** with remote (available on select EX models) takes fun to a new level. The system features a ceiling-mounted **7-inch LCD screen** that flips out of the way when not in use. For convenience, the system can be operated by separate controls in the front and the rear as well as by remote control. For the benefit of rear passengers, two sets of **wireless headphones** are standard as are three jacks for wired headphones. Best of all, front-seat occupants can listen to the audio system while those in back can separately enjoy a DVD or CD, or play a video game.



**We'll keep your seat warm.** The driver and front passenger of EX models with leather option will enjoy the **heated seats**. The heat is activated by a button on each front door. In all EX models, the driver's seat features 8-way power adjustment plus a lumbar-support feature you can adjust by hand.





### Versatile seating and leather.

Odyssey seating can be quickly altered to handle whatever configuration you need. You can easily carry people and cargo in a variety of combinations. And the **leather-trimmed** seating available in the EX isn't just luxurious to sit on and look at, it also cleans up easily.



**Easy come, easy go.** The standard dual **power sliding doors** on the EX provide easy access for all. For added convenience, the driver can remotely open both doors from the driver's seat. And with EX's **remote entry system**, the doors can be unlocked and opened from up to 50 feet away.



**At work, play or anything in between.** With its remarkable versatility, you'll be hard-pressed to find a weekend challenge that Odyssey can't meet. With just the front seats in place, you've got **146 cu. ft.** of cargo space to handle big projects. The low liftover height and wide-opening rear liftgate make loading easy. For those mid-sized errands where you don't need the entire carpeted and flat load floor, the second-row **sliding seats** can be pushed together, pulled apart or removed altogether. And for small, take-along items, Odyssey offers **ample storage areas** and seatback pockets. At the rear, cargo netting securely holds a variety of items while in transit.

**Poof! It's gone.** One of Odyssey's most versatile and innovative interior features is the standard retractable third-row **Magic Seat**. When it's not needed to carry passengers, the seat folds and swings back into the cargo well, where it lies flush with the floor, creating a wide, flat cargo area.



**Easy as one, two, tray.** Located between the front seats, the retractable center **tray table** provides a convenient surface for games or snacks. A sliding extension feature lets the second-row passengers use the tray as well.

**Guided by satellites.** With the Honda Satellite-Linked Navigation System (available on EX with leather) your map-folding skills are no longer needed. This system uses **global positioning satellites** (GPS) to pinpoint your location throughout most of the U.S. Using its onboard inertial guidance system, **DVD-based data** bank and satellite information, the system will give you turn-by-turn directions to your chosen destination using voice and visual prompts.\*

\*Only major streets, roads and highways are mapped outside major metropolitan areas. See the navigation system owner's manual for the current detailed coverage areas.



**Clear the way.** You can operate as many as three different items with the **HomeLink remote system** that comes standard on EX models. So you can open a garage door or an electric gate safely from inside your Odyssey.



Odyssey EX interior shown in Fern Leather with available Honda Satellite-Linked Navigation System.

While Odyssey's interior is a **great place** to spend a lot of time, it won't take more than a few seconds to be impressed by its amenities. There are **11 beverage holders**, plus lots of storage spaces for small take-along items. To make everyone at home, all three rows of seats have **air-conditioning** vents and map lights. The EX even has an automatic climate control system you can set and forget. The system will hold the preset temperature even in changing weather.

# RELIABLY SOLID

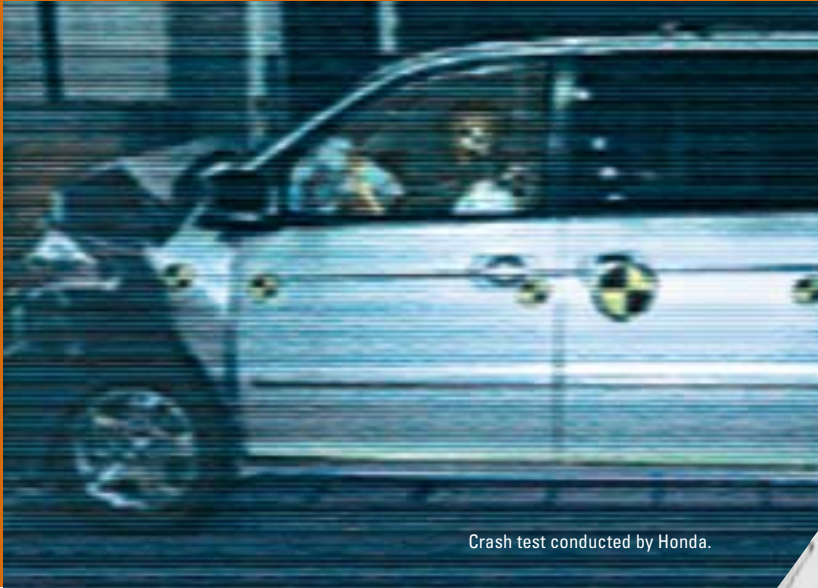


Odyssey EX shown in Sage Brush Pearl.

Odyssey's structural **rigidity** is one of its most beautiful features. This sturdy backbone is the core of Odyssey's crashworthiness. Thanks to the use of high-tensile-strength steel in strategic areas throughout the chassis, the **solid unit-body** construction provides the passenger cabin with outstanding resistance to frontal-, rear- and side-impact intrusion.

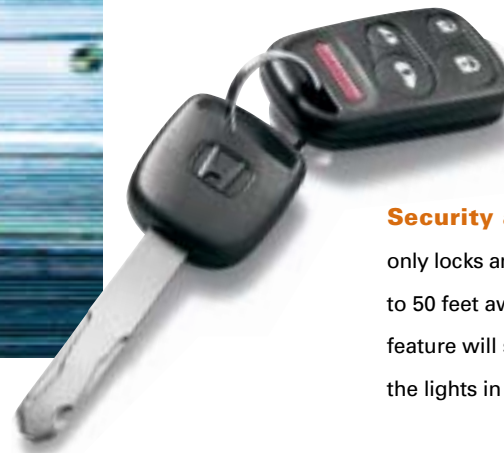
# SECURE

**Programmed for optimal safety.** Advanced Finite Element Modeling helped structural engineers design the **four-ring safety-shell** body to better resist impact intrusion. The computer system also helped them create the **front and rear crush zones** and the sturdy **steel side-impact door beams**. Both of these occupant-protection systems are designed to help absorb and dissipate impact energy before reaching the rigid cell of the passenger compartment. Extensive crash testing was then used to confirm the soundness of the safety systems.



Crash test conducted by Honda.

In the world of the National Highway Traffic Safety Administration, receiving a 5-star rating is the equivalent of a coronation. The 2003 Honda Odyssey has earned no less than a **quadruple 5-star** rating, the highest possible rating for frontal- and side-impact protection.\* And Odyssey's new front airbag system (SRS)<sup>†</sup> fully complies with the federal government's **2004 advanced airbag standards** as well.



**Security alert.** The EX's key fob not only locks and unlocks the doors from up to 50 feet away, but the **panic-button** feature will sound the horn and activate the lights in an emergency.

**Multi-layered safety.** The Odyssey comes with dual-stage, dual-threshold **front airbags** and **front side airbags**. The front airbags will deploy at one of two rates and thresholds, based on impact severity and seat-belt usage. All seven seats come with standard **3-point seat belts** and head restraints. For young passengers, the Odyssey has a third-row child-seat tether anchor. And a second-row **LATCH** (Lower Anchors and Tethers for Children) system helps ensure correct installation of compatible child seats.

\*National Highway Traffic Safety Administration frontal crash test: March 1999; side crash test: April 2002.

†Honda reminds you and your passengers to always buckle up.



**Grip stability.** Using the sensors of the anti-lock braking system (ABS) to detect impending wheel spin, the standard **Traction Control System (TCS)** automatically applies the brakes to enhance stability. You'll find this especially useful when starting off or traveling at lower speeds on uneven, wet or slippery surfaces.



Odyssey EX shown in Sandstone Metallic.

For decades, Honda has been a leader and an **innovator** in creating environmentally conscious technology. From pioneering stratified-charge engines of the 1970s to our current designs, concern for the planet has always been a top priority. So it's no surprise that for 2003, every Honda vehicle meets or surpasses federal **LEV** (Low-Emission Vehicle) standards. And that includes the truly **inspiring** 240-hp Honda S2000. But we don't stop there. Honda is still the only automaker to have two gas/electric hybrids on the market in the U.S.

## Specifications and Features

Engineering	LX	EX
Engine Block/Cylinder Head	Aluminum-Alloy V-6	Aluminum-Alloy V-6
Displacement (cc)	3471	3471
Horsepower @ rpm (SAE net)	240 @ 5500	240 @ 5500
Torque (lb.-ft. @ rpm)	242 @ 4500	242 @ 4500
Compression Ratio	10.0:1	10.0:1
Valve Train	24-Valve SOHC VTEC®	24-Valve SOHC VTEC®
Fuel System	Multi-Point Fuel Injection	Multi-Point Fuel Injection
Emissions Rating	LEV	LEV
Direct Ignition System with Immobilizer	•	•
105,000 Mile Tune-Up Interval*	•	•
Transmission		
5-Speed Automatic Transmission	•	•
Final Drive Ratio	4.2:1	4.2:1
Body/Suspension/Chassis		
Unit-Body Construction	•	•
MacPherson Strut Front/Multi-Link Double Wishbone Rear Suspension	•	•
Stabilizer Bar (mm, front)	22.0	22.0
Variable-Assist Power Rack-and-Pinion Steering	•	•
Turning Diameter, Curb-to-Curb (ft.)	37.7	37.7
Power-Assisted Ventilated Front Disc/Solid Rear Disc Brakes with ABS	•	•
Traction Control System (TCS)	•	•
Electronic Brake Distribution System (EBD)	•	•
Wheels	16" w/Full Covers	16" Alloy
All-Season Tires	P225/60 R16 98T M+S	P225/60 R16 98T M+S
Interior Measurements		
Headroom (in., front/middle/rear)	41.2/40.0/38.9	41.2/40.0/38.9
Legroom (in., front/middle/rear)	41.0/40.0/38.1	41.0/40.0/38.1
Shoulder Room (in., front/middle/rear)	62.6/64.5/61.7	62.6/64.5/61.7
Hiproom (in., front/middle/rear)	57.8/67.0/49.1	57.8/67.0/49.1
Cargo Volume (cu. ft., behind 1st/2nd/3rd row)	146.1/88.5/38.1	146.1/88.5/38.1
Passenger Volume (cu. ft.)	170.7	170.7
Exterior Measurements		
Wheelbase (in.)	118.1	118.1
Length (in.)	201.2	201.2
Height (in.)	68.5	69.7
Width (in.)	75.6	75.6
Track (in., front/rear)	66.1/66.1	66.1/66.1
Curb Weight (lbs.)	4310	4365
Towing Capacity (lbs.)	3500 <sup>3</sup>	3500 <sup>3</sup>
EPA Mileage Estimates/Fuel Capacities		
5-Speed Automatic (City/Highway) <sup>1</sup>	18/25	18/25
Fuel (gal.)	20.0	20.0
Required Fuel	Regular Unleaded	Regular Unleaded
Exterior Features		
Dual Sliding Doors	•	Power
Two-Speed/Variable Intermittent Windshield Wipers	•	•
Intermittent Rear Window Wiper/Washer	•	•
Security System with Remote Entry	Accessory	•
Dual Power Mirrors	•	Body-Colored
Heat-Rejecting Glass	•	•
Rear Privacy Glass	•	•
Roof Rails	•	•
Rear Roofline Spoiler with Integrated Brakelight	•	•
Multi-Reflector Halogen Headlights	•	w/Auto-Off
5-Mph Impact-Absorbing Body-Colored Bumpers	•	•

\*Does not apply to fluid and filter changes. See your owner's manual for details. <sup>1</sup>Based on 2002 EPA mileage estimates. Final 2003 EPA mileage estimates were not available at time of printing. Use for comparison purposes only. Actual mileage may vary.

<sup>1</sup>CD player replaces cassette. <sup>2</sup>HomeLink® is a registered trademark of Prince Corporation, a wholly owned subsidiary of Johnson Controls™. <sup>3</sup>Requires surge-type or electric trailer brakes, load-distribution hitch and transmission oil cooler. Refer to the owner's manual for additional towing information. <sup>4</sup>Based on 2002 EPA mileage estimates. Use for comparison purposes only. Actual mileage may vary. <sup>5</sup>Nighthawk Black Pearl available fall 2002 on EX with leather only. **3-Year/36,000-Mile Limited Warranty:** Ordinary maintenance or adjustments, parts subject to normal wear and replacement, and certain items are excluded. See your Honda dealer for the terms and conditions of this limited warranty. **Always use seat belts and appropriate child seats. Children are safest in the second- and third-row seats.** Some features mentioned herein are not available in all areas. See your Honda dealer for details. Some vehicles may be shown with optional equipment. Available = Optional. Specifications, features, illustrations and equipment shown in this brochure are based upon the latest available information at the time of printing. Although descriptions are believed correct, accuracy cannot be guaranteed. American Honda Motor Co., Inc., reserves the right to make changes at any time, without notice or obligation, in colors, specifications, accessories, materials and models. ©2002 American Honda Motor Co., Inc.

Exterior/Interior Colors	LX	EX
Taffeta White/Fern	•	•
Havasu Blue Metallic/Fern	•	•
Starlight Silver Metallic/Quartz	•	•
Redrock Pearl/Quartz	•	•
Sage Brush Pearl/Fern	•	•
Evergreen Pearl/Ivory	•	•
Sandstone Metallic/Ivory	•	•
Midnight Blue Pearl/Quartz	•	•
Nighthawk Black Pearl <sup>5</sup> /Quartz		(w/Leather)
Comfort & Convenience		
Front and Rear Air Conditioning with Air-Filtration System	•	Automatic
Power Windows with Auto-Up/Down Driver's Window	•	•
Power Rear Quarter-Windows	•	•
Power Door and Tailgate Locks	•	•
Cruise Control	•	•
Honda Satellite-Linked Navigation System™		Available (w/Leather)*
Honda DVD Entertainment System		Available (w/Leather)*
HomeLink® Remote System	•	•
Steering Wheel-Mounted Audio Controls	•	•
Retractable Center Tray Table with Sliding Extension	•	•
Sunglasses Holder	•	•
Map Lights (front, 2nd and 3rd row)	•	•
Adjustable Steering Column	•	•
Beverage Holders (front, 2nd and 3rd row) (11 total)	•	•
Seatback Pockets (front row)	Passenger Side	•
Passenger-Assist Grips with Coat Hooks (2nd row)	•	•
Remote Fuel Filler Door Release	•	•
Rear Window Defroster with Timer	•	•
Floor Mats	•	•
Cargo Area Grocery-Bag Hooks	•	•
Rear Cargo Net	Accessory	•
Seating		
Driver's Seat Adjustment	Manual Height	8-Way Power
Leather-Trimmed Seats and Door-Panel Inserts (front and 2nd row)		Available
Heated Front Seats		(w/Leather)
Driver's Seat with Manual Lumbar Support		•
Convertible 2nd-Row Bucket Seats	•	•
Retractable Fold-Down 3rd-Row Magic Seat™	•	•
Audio System		
AM/FM/Cassette Audio System with 4 Speakers	•	•
AM/FM/CD Audio System with 6 Speakers		•
Instrumentation		
Door-/Tailgate-Open Indicator Light	•	•
Low-Fuel/Low-Oil Pressure Indicator Lights	•	•
Tachometer	•	•
Maintenance Interval Indicator	•	•
Safety		
3-Point Seat Belts at All Seating Positions	•	•
Front 3-Point Seat Belts with Automatic Tensioning System	•	•
Adjustable Seat Belt Anchors (front and 2nd row)	•	•
Dual-Stage Front Airbags (SRS)	•	•
Front Side Airbags with Passengers-Side Occupant Position Detection System (OPDS)	•	•
Side-Impact Door Beams	•	•
Lower Anchors and Tethers for Children (LATCH) (2nd row)	•	•
Child-Seat Tether Anchors (3rd row)/Child-Proof Rear Door Locks	•	•

\*\*The factory-installed navigation system and DVD Entertainment System are only available separately on EX models with leather. See dealer for details.



Odyssey LX shown in Havasu Blue Metallic.



**Customize your Odyssey.** Your Honda dealer can install a number of accessories when you purchase your Odyssey. These include an air deflector, a cargo tray to protect the interior and a cargo cover to keep things out of sight. See your dealer for full details.

**Other available accessories:**

- 16" Machine-Finished Alloy Wheels
- Rearview Camera (Navigation System)
- Back-Up Sensors
- Fog Lights
- Subwoofer
- VHS or DVD Video System (i-VES)
- Armrest Console
- Trailer Hitch
- Wood-Grain Trim Kit
- Protection Package
- Cross Bars/Roof Rack and Attachments

**HONDA**

**Financial Services**

Whether you buy or lease a Honda, **Honda Financial Services** can assist you with the process. Ask your dealer which lease or purchase plan best suits your needs.

**HONDA**

**Care**

**Honda Care™** is a comprehensive and affordable vehicle and travel protection plan that is backed by Honda reliability, service and parts. See your dealer for details.



Accord Sedan



Civic Sedan



Civic Hybrid



S2000



Accord Coupe



Civic Coupe



Civic Si



Insight



Element (Winter 2002; prototype shown.)



CR-V



Pilot