



↗ 03 COROLLA

Corolla LE shown in Mineral Green Opalescent with available aluminum alloy wheels.

THE NEW COROLLA. IT JUST WANTS TO HAVE FUN.

With its thoroughly new exterior and redesigned interior, the 2003 Corolla is all about having fun. But don't worry, it's still a great value. So, whether you're in the market for something sporty or sophisticated, this year's Corolla lineup will hook you up.

LOOKING GOOD. BEING SAFE. IT'S NOT EITHER/OR.

Corolla offers both. New features, like multi-stage air bags SRS¹ that deploy differently depending on the strength of impact, provide added peace of mind. Also available are side-impact air bags SRS.¹ And, of course, you'll still find our impressive list of regular Corolla safety features. It's a beautiful thing, safety and fun coexisting harmoniously.

¹See Standard Features more information on Toyota's dual front and available front seat-mounted side-impact air bag Supplemental Restraint Systems (SRS).

STANDARD FEATURES
CE

- Aerodynamic multi-reflector halogen headlamps with Daytime Running Lights (DRL)
- Power remote-controlled outside mirrors
- Black protective body side moldings
- Color-keyed outside door handles
- P185/65R15 tires on steel wheels with full wheel covers
- Defroster-linked CFC-free air conditioning with air filter
- Intermittent windshield wipers
- Power steering
- Tilt steering wheel
- Driver and front passenger air bag Supplemental Restraint System (SRS)¹
- Digital clock
- Covered center console with storage
- Fabric-trimmed 4-way adjustable front seats
- Front and rear dual cup holders
- 60/40 split fold-down rear seat
- Two 12-volt auxiliary power outlets
- Heavy-duty electric rear window defogger
- Instrumentation: black speedometer, tachometer with LCD odometer and twin tripmeters, and coolant temperature, fuel level and outside temperature gauges
- Remote trunk-release with cancel feature
- Trunk lamp
- Remote hood and fuel-filler door releases
- Deluxe AM/FM ETR/CD with 4 speakers



CE 15" steel wheel
with full wheel cover

S

(In addition to/in place of all CE Standard Features)

- Aerodynamic multi-reflector halogen headlamps with smoked lenses
- Integrated fog lamps
- Color-keyed front and rear underbody spoilers, side rocker panel moldings and rear mudguards
- Color-keyed protective body side moldings
- Color-keyed power remote-controlled outside mirrors
- P195/65R15 tires on steel wheels with full wheel covers
- Leather-wrapped steering wheel
- Power door locks
- Chrome-accented door handles, shift lever and shifter surround
- Interior mirror-mounted maplights
- Instrumentation: white silhouette speedometer, tachometer with LCD odometer and twin tripmeters, and coolant temperature, fuel level and outside temperature gauges
- Driver's seat height adjuster



S 15" steel wheel
with full wheel cover



Available 15" aluminum alloy wheel

LE

(In addition to/in place of all CE Standard Features)

- Color-keyed protective body side moldings
- Color-keyed power remote-controlled outside mirrors
- Variable intermittent windshield wipers with mist cycle
- P195/65R15 tires on steel wheels with full wheel covers
- Wood-grain-style interior trim with chrome-accented door handles and shift lever
- Power windows and door locks
- Interior mirror-mounted maplights
- Multifunction remote keyless entry with lock, unlock and panic features
- Instrumentation: silhouette speedometer; tachometer with LCD odometer and twin tripmeters, and coolant temperature, fuel level and outside temperature gauges
- Driver's seat height adjuster



LE 15" steel wheel
with full wheel cover



Available 15" aluminum alloy wheel

¹The Toyota driver, front passenger and front seat-mounted side-impact air bags are Supplemental Restraint Systems (SRS). The driver and front passenger air bags are designed to inflate in a severe frontal collision. The side-impact air bags are designed to inflate in severe side-impact collisions. In all other accidents, the air bags will not inflate. To decrease the risk of injury from a deploying air bag, always wear seatbelts, sit upright in the middle of the seat as far back as possible from the air bag modules and do not lean against the door. Do not put objects in front of an air bag or around the seat-back. Do not use rearward-facing child seats in any front passenger seat. The force of a deploying air bag SRS may cause serious injury or death. Please see your Owner's Manual for further instructions.

OPTIONAL PACKAGES
CE

- 4-wheel Anti-lock Brake System (ABS) with Electronic Brake-force Distribution (EBD)
- Front seat-mounted side-impact air bag Supplemental Restraint System (SRS)¹
- Cruise control
- Power door locks
- Deluxe 3-in-1 AM/FM ETR/Cassette/CD with 4 speakers

AVAILABLE PACKAGE

- **All-Weather Guard Package** — includes windshield molding, anti-chipping tape, heavy-duty heater and rear heater duct

S

- 4-wheel Anti-lock Brake System (ABS) with Electronic Brake-force Distribution (EBD)
- Front seat-mounted side-impact air bag Supplemental Restraint System (SRS)¹
- Cruise control
- Power tilt/slide moonroof with sunshade
- Deluxe 3-in-1 AM/FM ETR/Cassette/CD with 4 speakers
- Deluxe AM/FM ETR/CD with 6 speakers

AVAILABLE PACKAGES

- **Sport Plus Package** — includes aluminum alloy wheels and color-keyed rear spoiler
- **Power Package** — includes power windows and remote keyless entry
- **All-Weather Guard Package** — includes windshield molding, anti-chipping tape, heavy-duty heater and rear heater duct

XLE

- Aluminum alloy wheels
- 4-wheel Anti-lock Brake System (ABS) with Electronic Brake-force Distribution (EBD)
- Front seat-mounted side-impact air bag Supplemental Restraint System (SRS)¹
- Cruise control
- Power tilt/slide moonroof with sunshade
- Deluxe AM/FM ETR/CD with 6 speakers
- Deluxe 3-in-1 AM/FM ETR/Cassette/CD with 6 speakers

AVAILABLE PACKAGES

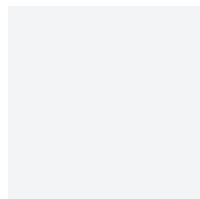
- **Leather Trim Package** — includes Pebble Beige leather-trimmed seats and headrests, door trim and steering wheel; chrome-accented parking brake and shift lever; cruise control; and auto-dimming electrochromic rearview mirror² with maplights and compass
- **All-Weather Guard Package** — includes windshield molding, anti-chipping tape, heavy-duty heater and rear heater duct

¹The Toyota driver, front passenger and front seat-mounted side-impact air bags are Supplemental Restraint Systems (SRS). The driver and front passenger air bags are designed to inflate in a severe frontal collision. The side-impact air bags are designed to inflate in severe side-impact collisions. In all other accidents, the air bags will not inflate. To decrease the risk of injury from a deploying air bag, always wear seatbelts, sit upright in the middle of the seat as far back as possible from the air bag modules and do not lean against the door. Do not put objects in front of an air bag or around the seat-back. Do not use rearward-facing child seats in any front passenger seat. The force of a deploying air bag SRS may cause serious injury or death. Please see your Owner's Manual for further instructions.

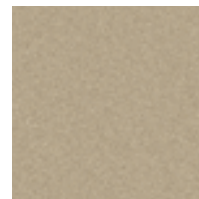
²Includes manual day/night mirror with maplights when equipped with available power tilt/slide moonroof.



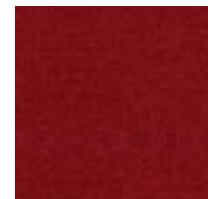
Lunar Mist Metallic with Stone or Pebble Beige¹ (CE/LE) or Charcoal (S) interior



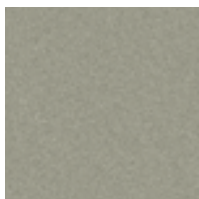
Super White with Stone or Pebble Beige (CE/LE) or Charcoal (S) interior



Sandrifit Metallic² with Pebble Beige interior



Impulse Red Pearl with Stone or Pebble Beige (CE/LE) or Charcoal (S) interior



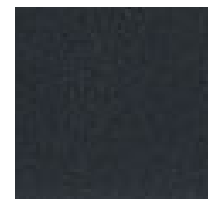
Mineral Green Opalescent² with Stone or Pebble Beige interior



Moonshadow Metallic with Stone or Pebble Beige¹ (CE/LE) or Charcoal (S) interior



Indigo Ink Pearl with Stone or Pebble Beige (CE/LE) or Charcoal (S) interior



Black Sand Pearl with Stone or Pebble Beige (CE/LE) or Charcoal (S) interior

¹Available on LE models with Leather Trim Package only.

²Not available on Corolla S.

SPECIFICATIONS
Mechanical/Performance

Engine	All-aluminum 1.8-liter DOHC 16-valve VVT-i 4-cylinder
130 hp @ 6,000 rpm; 125 lb.-ft. @ 4,200 rpm	
Transmission	
Standard	5-speed manual transmission
Available	4-speed automatic electronically controlled transmission (ECT)
Body construction	Unitized body
Drivetrain	Front engine, front-wheel drive
Suspension	Independent MacPherson strut front, torsion beam rear suspension with front and rear stabilizer bars
Steering	Engine speed-sensing power-assisted rack-and-pinion
Turning circle diameter, curb to curb (ft.)	34.2
Brakes	Power-assisted ventilated front disc/rear drum
4-wheel Anti-lock Brake System (ABS) with Electronic Brake-force Distribution (EBD)	Available

Exterior Dimensions

Overall height	57.5/57.7 (LE, S)
Overall width	66.9
Overall length	178.3
Wheelbase	102.4
Track (front/rear)	58.3/57.5
Ground clearance	5.7

Interior Dimensions

Head room	39.1/37.1 (37.8/37.0) ³
Shoulder room	53.1/53.5
Hip room	51.9/46.2
Leg room	41.3/35.4
Seating capacity	5

Weights and Capacities

	CE	S	LE
Curb weight (lbs.) Manual/Automatic	2,502/2,568	2,524/2,590	2,524/2,590
EPA passenger volume (cu. ft.)	90.3	90.3/88.5 ³	90.3/88.5 ³
Luggage capacity (cu. ft.)	13.6	13.6	13.6
Towing capacity (lbs.) ⁴	1,500	1,500	1,500
Fuel tank (gals.)	13.2	13.2	13.2

Tires

Size	P185/65R15	P195/65R15	P195/65R15
Type	All-Season	All-Season	All-Season
Spare	Temporary	Temporary	Temporary

Mileage Estimates (estimated mpg city/highway)⁵

Manual	32/40	32/40	32/40
Automatic	30/39	30/39	30/39

³ With available power moonroof.

⁴ Do not exceed the Gross Combined Weight Rating for your vehicle. See your Toyota dealer for GCWR limits and additional required equipment.

⁵ Preliminary mileage estimates determined by Toyota. Final EPA mileage estimates not available at time of printing. See your Toyota dealer for details.

Some vehicles are shown with available equipment. Seatbelts should be worn at all times. For details on vehicle specifications, standard features and available equipment in your area, contact your Toyota dealer. A vehicle with particular equipment may not be available at the dealership. Ask your Toyota dealer to help locate a specifically equipped vehicle. Specifications, standard features and available equipment are based upon information available at the time of printing, are subject to change without notice, are for mainland U.S.A. vehicles only and may differ in the state of Hawaii and in other regions.

1-800-GO-TOYOTA

Have you logged 100,000, 200,000 or more miles on your Toyota with the original engine, transmission and drivetrain? If you have, give us a call at 1-800-GO-TOYOTA and tell us your story. toyota.com

©2001 Toyota Motor Sales, U.S.A., Inc.