

SPECIAL FEATURE HIGHLIGHTS

LOW-MAINTENANCE FEATURES

- Alero offers a number of features to save you time and money throughout your ownership period:
- Maintenance-free battery\*
  - Maintenance-free steel timing chain (2.2-liter DOHC 4-cylinder engine)
  - 100,000-mile tune-up interval\*
  - Long-life fluids, including coolant, brake fluid and automatic transmission fluid that will last up to 100,000 miles or more (excludes normal maintenance)
  - Long-life stainless steel exhaust system\*
  - 5-mph bumpers

SPECIFICATIONS

POWERTRAIN	DOHC 4-CYLINDER	V6 ENGINE
Engine displacement	2.2 liters (134 cu. in.)	3.4 liters (207 cu. in.)
Horsepower	140 @ 5600 rpm	170 @ 4800 rpm
Torque (lb.-ft.)	150 @ 4000 rpm	200 @ 4000 rpm
Fuel injection	Sequential port	Sequential port
Transmission	5-speed manual or 4-speed automatic	4-speed automatic
Transaxle ratio	3.94 (manual) 3.91 (automatic)	3.05 (automatic)
EPA estimated fuel economy	26 city/33 highway (manual) 24 city/33 highway (automatic)	20 city/29 highway

INTERIOR DIMENSIONS	SEDAN	COUPE
Headroom front/rear (in.)	38.3/37.5	38.3/37.0
Legroom front/rear (in.)	42.1/36.3	42.1/36.2
Shoulder room front/rear (in.)	53.6/55.4	53.6/52.4
Hiproom front/rear (in.)	50.9/51.4	50.9/50.8

CAPACITIES	SEDAN	COUPE
Passengers	5	5
Trunk volume (cu. ft.)	14.6	14.6
Fuel Tank (approx. gal.)	14	14

EXTERIOR DIMENSIONS	SEDAN	COUPE
Wheelbase (in.)	107.0	107.0
Length (in.)	186.7	186.7
Width (in.)	70.1	70.1
Height (in.)	54.5	54.5
Curb weight (lb., GL model)	3008	2950
Track width, front/rear (in.)	59.1/59.3	59.1/59.3
Turning circle, 15-inch/16-inch tires (ft.)	35.1/35.8	35.1/35.8



15-inch bolt-on wheel  
Standard on GX



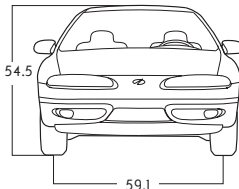
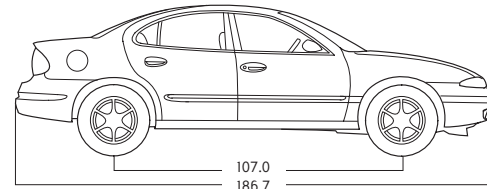
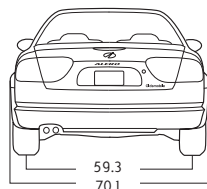
15-inch aluminum wheel  
Available on GX (with Sport Package)  
Standard on GLI



16-inch aluminum wheel  
Standard on GL2



16-inch polished wheel  
Standard on GLS



A Word About This Catalog

We have tried to make this catalog comprehensive and factual. We reserve the right, however, to make changes at any time, without notice, to the information contained in this catalog. Since information may have been updated since the time of printing, please check with your Oldsmobile dealer for complete details. Oldsmobile reserves the right to lengthen or shorten the model year for any product for any reason, or to start and end model years at different times. Some photos in this catalog show vehicles with optional equipment.

The GM Card®

For information or to apply for the GM Mastercard®, call 1-800-8GM-CARD.

SmartLease By GMAC

For information about SmartLease, SmartBuy or any of the other quality GMAC financing options, see your Oldsmobile dealer, call 1-800-32-SMART, or visit our Web site at [www.gmacfs.com](http://www.gmacfs.com).

Accelerate Your College Savings.

Uprromise is a revolutionary college savings accelerator that can help you save thousands of dollars for college. Through Uprromise, America's most trusted companies contribute a portion of your everyday spending into a college savings account for your children, grandchildren or any other child you wish to support. For complete details on the GM-Uprromise program, go to <http://upromise.gm.com>. Enrollment is simple and absolutely free.

The GM Mobility Program

Oldsmobile recognizes the importance of mobility to everyone's life and, therefore, offers financial assistance to persons with disabilities through the General Motors Mobility Program. This program can provide up to \$1,000 reimbursement toward the cost of eligible aftermarket adaptive equipment for drivers and passengers. For details and free resource information, call: 1-800-323-9935 (TTY users: 1-800-833-9935).

A Note On Child Safety

Always use safety belts and proper child restraints, even with air bags. Children are safer when properly secured in a rear seat. Never place a rear-facing infant restraint in the front seat of any vehicle equipped with an active air bag. See your vehicle Owner's Manual and child safety seat instructions for more safety information.

New Vehicle Limited Warranty

This warranty is for GM vehicles registered in the USA. See your Oldsmobile dealer for terms and conditions.

- Covered for 3 years/36,000 miles (whichever comes first):
- The complete vehicle • Tires • Towing to your nearest Oldsmobile dealership • Cosmetic corrosion resulting from defects • Repairs made to correct any vehicle defect • No charge for most warranty repairs
- Covered for 6 years/100,000 miles (whichever comes first):
- Rust-through corrosion

Corrosion Protection

Oldsmobile vehicles are designed and built to resist corrosion. All body and sheet metal components are warranted against rust-through corrosion for six years or 100,000 miles, whichever comes first. Application of additional rust-inhibiting materials is not required under the corrosion coverage and none is recommended. See your Oldsmobile dealer for terms of this limited warranty.

An Important Note About Alterations and Warranties

Installations or alterations to the original equipment vehicle (or chassis) as distributed by General Motors are not covered by the General Motors New Vehicle Limited Warranty. The special body

company, assembler, equipment installer or upfitter is solely responsible for warranties on the body or equipment and any alterations (or any effect of the alterations) to any of the parts, components, systems or assemblies installed by GM. General Motors is not responsible for the safety or quality of design features, materials or workmanship of any alterations by such suppliers.

Assembly

Oldsmobiles and their components are assembled or produced by different operating units of General Motors, its subsidiaries or suppliers to GM Worldwide. We sometimes find it necessary to produce Oldsmobiles with different or differently sourced components than originally scheduled. Since some options may be unavailable when your vehicle is assembled, we suggest that you verify that your vehicle includes the equipment you ordered or, if there are changes, that they are acceptable to you.

Engines

Oldsmobiles are equipped with engines produced by different operating units of GM, its subsidiaries or suppliers to GM Worldwide.

Bumper-To-Bumper Limited Warranty

For three years or 36,000 miles (whichever comes first), the GM Bumper-to-Bumper Limited Warranty covers your new Alero for repairs, including parts and labor, to correct any defect in materials or workmanship, including tires. With this limited warranty, there's no deductible. The complete vehicle is covered during the warranty period, except adjustment and normal maintenance items. All body sheet metal components are warranted against rust-through corrosion for six years or 100,000 miles, whichever comes first. There is also no deductible for rust-through repairs. Application of additional rust-inhibiting materials is not required or recommended. See your Oldsmobile dealer for the terms of this limited warranty.

Owner Aftercare

Throughout our 3-year/36,000 mile (whichever comes first) Bumper-to-Bumper Limited Warranty, we also offer Courtesy Transportation, free trip routing and 24-hour roadside assistance by calling 1-800-442-OLDS. At Oldsmobile, we're committed to your satisfaction long after the purchase of your car. See your Oldsmobile dealer for complete terms and conditions of these programs.

Owner Center at My GMLink

The Owner Center at My GMLink is a complimentary service for GM owners within MyGMLink.com, a one-stop resource to enhance your GM ownership experience. Exclusive member benefits include online service reminders, vehicle maintenance tips, online owner's manual, special privileges and more. Sign up today at [www.mygmlink.com](http://www.mygmlink.com).

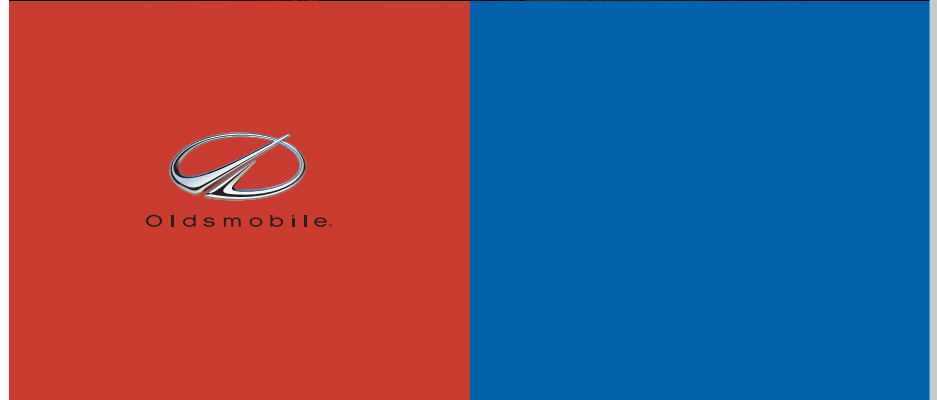
GM Protection Plan

Every new 2003 Oldsmobile comes with the confidence of a 5 year/60,000 mile GM Protection Plan, or you can choose additional cash in lieu of the GMP. Take delivery by 10/01/04. GM Protection Plan Major Guard® coverage for 5 years/60,000 miles (whichever comes first) effective from the date of delivery and 0 miles. Excludes normal maintenance. Some restrictions apply. See dealer for complete details of Major Guard and cash alternative. In Florida, coverage is provided under Oldsmobile 60-month/60,000 mile limited warranty. See Florida dealer for complete limited warranty details.

Need More Information?

Visit our Web site at [www.alero.com](http://www.alero.com). For information on any other Oldsmobile product, visit us at [www.oldsmobile.com](http://www.oldsmobile.com) or call 1-800-255-6537.

©2003 GM Corp. All rights reserved. Printed in the USA 07/03. Alero, Bravada, Silhouette, PassLock, Delco, DEX-COOL, GMAC, GM Protection Plan, GM Protection Plan Major Guard, Major Guard, The GM Card, Oldsmobile emblem, the Oldsmobile nameplate and SMARTLEASE are registered trademarks of General Motors Corp. GM Protection Plan is a service mark of General Motors Corp. The XM name is a trademark of XM Satellite Radio Inc.



Alero adds an altogether more exhilarating

dimension to everyday driving. With its roomy

interior and impressive list of standard

equipment, Alero requires no sacrifices in

your quest for comfort, versatility, safety

and value in one fun-to-drive package.

\* Maintenance needs vary with different uses and driving conditions. See Owner's Manual for more information.

# INSIDE "ALERO"

## STANDARD FEATURES COUPE AND SEDAN, ALL MODELS

### POWERTRAIN/CHASSIS AND SUSPENSION

- Front-wheel drive
- Rigid body structure
- 4-wheel independent suspension
- Power rack-and-pinion steering
- Touring suspension

### SAFETY AND SECURITY

- Safety cage construction with side-impact protection
- Dual frontal air bags\*\*\*
- 3-point outboard safety belts
- LATCH system for child restraints
- Brake/transmission shift interlock (automatic transmission)
- Daytime running lamps with automatic lamp control
- Pulse wipers
- Front, side and electric-rear window defoggers
- Automatic power door locks with lockout prevention feature
- Rear-door child security locks (sedan only)
- Full interior courtesy lighting with illuminated entry/exit
- PASSLock theft-deterrent system
- Battery-rundown protection
- Emergency trunk release

### DRIVER CONTROLS

- Driver-oriented controls with dash-mounted ignition and hazard switches
- Full instrumentation
- Adjustable steering column
- Center floor console
- Power trunk release
- Backlit switches
- Reminder chimes

### SEATING AND TRIM

- Contoured, reclining front bucket seats
- 70/30 split-folding rear seat

### COMFORT AND CONVENIENCE

- Air conditioning (CFC-free)
- Rear seat heat ducts
- Cruise control
- Solar-coated tinted glass with UV protection
- Extensive interior storage
- Front and rear cupholders
- Easy-entry feature (coupe only)
- Last-door-closed locking feature
- 12 volt auxiliary power outlet
- Sun visors with covered vanity mirrors
- Ashtray and lighter
- AM/FM stereo with CD

### EXTERIOR

- Rust-resistant and dent-resistant steel body panels
- 5-mph bumpers
- Rear window grid radio antenna
- Stainless steel exhaust system

## MODEL-SPECIFIC FEATURES, COUPE AND SEDAN

✓ = Standard A = Available

### POWERTRAIN AND CHASSIS

- 2.2 liter DOHC 4-cylinder SFI engine with electronically controlled 4-speed automatic transmission
- 3.4 liter 170 hp V6 SFI engine with electronically controlled 4-speed automatic transmission
- 5-speed manual transmission
- Engine block heater

### SAFETY AND SECURITY

- Brakes, front disc/rear drum
- Brakes, front disc/rear disc
- Antilock brake system with traction control
- Remote keyless entry system with panic button
- Foglamps

### SEATING AND TRIM

- Cloth-trimmed seating areas
- Leather-appointed seating areas
- Driver's seat with power height adjustment
- 6-way power driver's seat
- Leather-wrapped steering wheel and shift knob

### AVAILABLE EQUIPMENT PACKAGES

- GX Sport Package: 5-speed manual transmission, leather-wrapped steering wheel and shift knob, 15-inch aluminum wheels, rear decklid spoiler
- Sun & Sound Package: Power sunroof, AM/FM stereo/CD/cassette, 200-watt amplifier with 8-speaker Premium Sound system

	GX MODEL	GLI MODEL	GLZ MODEL	GLS MODEL
2.2 liter DOHC 4-cylinder SFI engine with electronically controlled 4-speed automatic transmission	✓	✓		
3.4 liter 170 hp V6 SFI engine with electronically controlled 4-speed automatic transmission		A	✓	✓
5-speed manual transmission	A <sup>1</sup>			
Engine block heater	A	A	A	A
Brakes, front disc/rear drum	✓	✓		
Brakes, front disc/rear disc			✓	✓
Antilock brake system with traction control	A	A	✓	✓
Remote keyless entry system with panic button		✓	✓	✓
Foglamps		✓	✓	✓
Cloth-trimmed seating areas	✓	✓	✓	
Leather-appointed seating areas				✓
Driver's seat with power height adjustment		✓	✓	
6-way power driver's seat		A	A	✓
Leather-wrapped steering wheel and shift knob	A <sup>2</sup>	✓	✓	✓
GX Sport Package: 5-speed manual transmission, leather-wrapped steering wheel and shift knob, 15-inch aluminum wheels, rear decklid spoiler	A			
Sun & Sound Package: Power sunroof, AM/FM stereo/CD/cassette, 200-watt amplifier with 8-speaker Premium Sound system		A	A	A

### COMFORT AND CONVENIENCE

- Power windows with driver's auto-down
- Power outside rearview mirrors
- Map pockets in front doors
- Carpeted front and rear floor mats
- Rearview mirror w/ reading light
- AM/FM stereo/CD player with 6-speaker sound system
- AM/FM stereo/CD player, RDS, auto-tone control, speed-compensated volume with 6-speaker sound system
- AM/FM stereo/CD/cassette, RDS, auto-tone control, speed-compensated volume with 200-watt, 8-speaker sound system\*\*
- XM Satellite Radio (activation and service fees extra)\*

### EXTERIOR

- 15-inch bolt-on wheel covers
- 15-inch aluminum wheels
- 16-inch painted aluminum wheels
- 16-inch polished aluminum wheels
- Rear decklid spoiler
- Power sunroof with sliding glass panel (requires Sun & Sound Package)
- P215/60R15 radial touring tires
- Performance suspension with P225/50R16 Goodyear Eagle RS-A radial performance tires
- P225/50R16 Goodyear Eagle LS radial touring tires
- Gold package: Gold-tinted front and rear emblems, Alero and Oldsmobile lettering on rear panel. (Not available with Sterling or Steel Gray exterior colors.)

	GX MODEL	GLI MODEL	GLZ MODEL	GLS MODEL
Power windows with driver's auto-down		✓	✓	✓
Power outside rearview mirrors		✓	✓	✓
Map pockets in front doors		✓	✓	✓
Carpeted front and rear floor mats	A	A	✓	✓
Rearview mirror w/ reading light				✓
AM/FM stereo/CD player with 6-speaker sound system	✓			
AM/FM stereo/CD player, RDS, auto-tone control, speed-compensated volume with 6-speaker sound system		✓	✓	✓
AM/FM stereo/CD/cassette, RDS, auto-tone control, speed-compensated volume with 200-watt, 8-speaker sound system**	A	A	A	A
XM Satellite Radio (activation and service fees extra)*	A	A	A	A
15-inch bolt-on wheel covers	✓			
15-inch aluminum wheels	A <sup>2</sup>	✓		
16-inch painted aluminum wheels				✓
16-inch polished aluminum wheels			✓	
Rear decklid spoiler	A <sup>2</sup>	A	✓	✓ <sup>3</sup>
Power sunroof with sliding glass panel (requires Sun & Sound Package)		A	A	A
P215/60R15 radial touring tires	✓	✓		
Performance suspension with P225/50R16 Goodyear Eagle RS-A radial performance tires			✓	A
P225/50R16 Goodyear Eagle LS radial touring tires				✓
Gold package: Gold-tinted front and rear emblems, Alero and Oldsmobile lettering on rear panel. (Not available with Sterling or Steel Gray exterior colors.)		A	A	A

<sup>1</sup> Pewter only

<sup>2</sup> Requires GX Sport Package

<sup>3</sup> Standard on Coupe, available on Sedan.

\*XM Satellite Radio available only in the 48 contiguous states. Visit [www.gmmradio.com](http://www.gmmradio.com) for details.

\*\*Included as part of the XM digital satellite sound system.

\*\*\*Always use safety belts and proper child restraints, even with air bags. Children are safer when properly secured in a rear seat. See the Owner's Manual for more safety information.

## EXTERIOR COLORS/INTERIOR COLOR AVAILABILITY



**BRIGHT RED**  
GX COUPE, GL, GLS



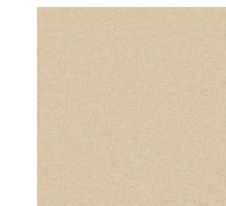
**BLACK ONYX**  
ALL



**STERLING**  
ALL



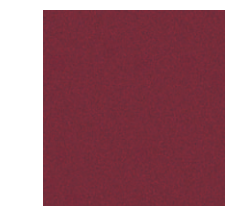
**ARCTIC WHITE**  
ALL



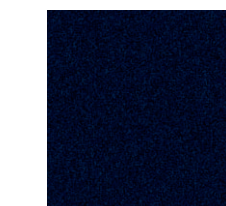
**SANDSTONE**  
GL, GLS



**STEEL GRAY**  
GL, GLS

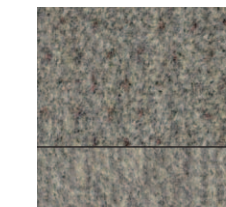


**SPORT RED**  
GX SEDAN, GL, GLS

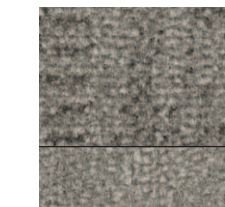


**INDIGO**  
ALL

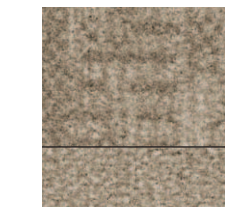
## INTERIOR COLORS



**PEWTER CLOTH**  
GX



**PEWTER CLOTH**  
GL



**NEUTRAL CLOTH**  
GL



**PEWTER LEATHER**  
GLS



**NEUTRAL LEATHER**  
GLS

**ALERO**



**INSIDE "ALERO"**