



# ↗ 04 COROLLA

Corolla LE shown in Mineral Green Opalescent with available aluminum alloy wheels.

FUN IS SURE TO FOLLOW.

A good time was had by all. There's more than one way to have fun. The Corolla S, with its aerodynamic halogen headlamps with smoked lenses, integrated fog lamps, and front and rear underbody spoilers, is bound to appeal to those who are always on the guest list. Then there's the Corolla LE. With a multi-function remote keyless entry, wide P195/65R15 tires and color-keyed power mirrors, windows and door locks, it has all the bells and whistles, without being loud. Don't forget the affordable Corolla CE with its 16-valve VVT-i engine. Sort of like a season pass, it's a lot of fun for not a lot of money. Somewhere there's a barrel of disgruntled monkeys.

Five friends and an available Deluxe 6-speaker stereo. If the neighbors complain, change lanes. Corolla's for everyone who likes to have a good time. With its spacious cabin, air conditioning, 60/40 split fold-down rear seat, front and rear dual cup holders, and available leather-trimmed seats, there won't be any shortage of friends who want to come along for the ride. Add to the mix the standard AM/FM CD with four speakers and things could get pretty lively in here.

**MODEL GRADE FEATURES**

EXTERIOR	CE	S	LE		CE	S	LE
Aerodynamic multi-reflector halogen headlamps with Daytime Running Lights (DRL)	S	-	S	Black protective body side moldings	S	-	-
Aerodynamic multi-reflector halogen headlamps with Daytime Running Lights (DRL) and smoked lenses	-	S	-	Color-keyed protective body side moldings	-	S	S
Integrated fog lamps	-	S	-	Color-keyed outside door handles	S	S	S
Intermittent windshield wipers	S	S	-	Color-keyed front and rear underbody spoilers, side rocker panel and rear mudguards	-	S	-
Variable intermittent windshield wipers with mist cycle	-	-	S	15" steel wheels with P185/65R15 tires and full wheel covers	S	-	-
Power remote-controlled outside mirrors	S	-	-	15" steel wheels with P195/65R15 tires and full wheel covers	-	S	S
Color-keyed power remote-controlled outside mirrors	-	S	S	15" aluminum alloy wheels with P195/65R15 tires	-	0	0
INTERIOR	CE	S	LE		CE	S	LE
Instrumentation: black speedometer, tachometer with LCD odometer and twin tripmeters, and coolant temperature, fuel level and outside temperature gauges	S	-	-	Chrome-accented door handles, shift lever and shifter surround	-	S	P
Instrumentation: red-illuminated white silhouette speedometer, tachometer with LCD odometer and twin tripmeters, and coolant temperature, fuel level and outside temperature gauges	-	S	-	Interior mirror-mounted maplights	-	S	S
Instrumentation: white silhouette speedometer, tachometer with LCD odometer and twin tripmeters, and coolant temperature, fuel level and outside temperature gauges	-	-	S	Power door locks	0	S	S
Digital clock	S	S	S	Power windows	-	P	S
Tilt steering wheel	S	S	S	Covered center console with storage	S	S	S
Leather-wrapped steering wheel	-	S	P	Front and rear dual cup holders	S	S	S
Defroster-linked CFC-free air conditioning with air filter	S	S	S	Fabric-trimmed 4-way adjustable front seats	S	S	S
Deluxe AM/FM CD with four speakers	S	S	S	Driver's seat height adjuster	-	S	S
Deluxe 3-in-1 AM/FM Cassette/CD with four speakers	0	0	-	60/40 split fold-down rear seat	S	S	S
Deluxe AM/FM CD with six speakers	-	0	0	Wood-grain-style interior trim	-	-	S
Deluxe 3-in-1 AM/FM Cassette/CD with six speakers	-	-	0	Two 12V power outlets	S	S	S
				Heavy-duty electric rear window defogger	S	S	S
				Remote trunk-release with cancel feature	S	S	S
				Remote hood and fuel-filler door releases	S	S	S
				Trunk lamp	S	S	S
				Multi-function remote keyless entry with lock, unlock and panic features	-	P	S

S = Standard      0 = Optional      - = Not Available      P = Feature is available only as part of an option package.

**CE**



CE 15" steel wheel with full wheel cover

**S**



S standard 15" steel wheel with full wheel cover  
S available 15" aluminum alloy wheel

**LE**



LE standard 15" steel wheel with full wheel cover  
LE available 15" aluminum alloy wheel

## AVAILABLE PACKAGES AND OPTIONS

### CE PACKAGE

All-Weather Guard Package — includes windshield molding, anti-chipping tape, heavy-duty heater and rear heater duct

### S PACKAGE

Sport Plus Package — includes 15" aluminum alloy wheels with P195/65R15 tires and color-keyed rear spoiler

Power Package — includes power windows and remote keyless entry

All-Weather Guard Package — includes windshield molding, anti-chipping tape, heavy-duty heater and rear heater duct

### LE PACKAGE

All-Weather Guard Package — windshield molding, heavy-duty heater and rear-seat heater ducts

### CE OPTIONS

- 4-wheel Anti-lock Brake System (ABS) with Electronic Brake-force Distribution (EBD)
- Front seat-mounted side airbags<sup>1</sup>
- Cruise control
- Power door locks
- Deluxe 3-in-1 AM/FM Cassette/CD with four speakers

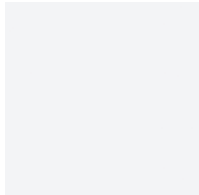
### S OPTIONS

- 4-wheel Anti-lock Brake System (ABS) with Electronic Brake-force Distribution (EBD)
- Front seat-mounted side airbags<sup>1</sup>
- Cruise control
- Power door locks
- Deluxe 3-in-1 AM/FM Cassette/CD with four speakers

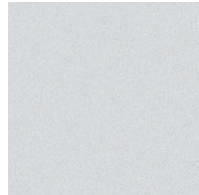
### LE OPTIONS

- 4-wheel Anti-lock Brake System (ABS) with Electronic Brake-force Distribution (EBD)
- Front seat-mounted side airbags<sup>1</sup>
- Cruise control
- Power tilt/slide moonroof with sunshade
- Deluxe AM/FM CD with six speakers
- Deluxe 3-in-1 AM/FM Cassette/CD with six speakers
- 15" aluminum alloy wheels with P195/65R15 tires

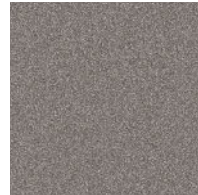
## COLORS



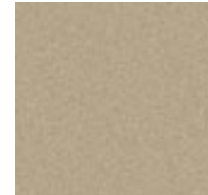
Super White with Stone or Pebble Beige (CE/LE) or Charcoal (S) interior



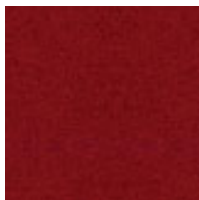
Lunar Mist Metallic with Stone or Pebble Beige<sup>7</sup> (CE/LE) or Charcoal (S) interior



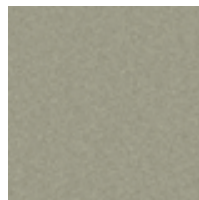
Moonshadow Metallic with Stone or Pebble Beige<sup>7</sup> (CE/LE) or Charcoal (S) interior



Desert Sand Mica<sup>8</sup> with Pebble Beige interior



Impulse Red Pearl with Stone or Pebble Beige (CE/LE) or Charcoal (S) interior



Mineral Green Opalescent<sup>8</sup> with Stone or Pebble Beige interior



Indigo Ink Pearl with Stone or Pebble Beige (CE/LE) or Charcoal (S) interior



Black Sand Pearl with Stone or Pebble Beige (CE/LE) or Charcoal (S) interior

<sup>1</sup>The Toyota driver, front passenger and front seat-mounted side airbags are Supplemental Restraint Systems (SRS). The driver and front passenger airbags are designed to deploy in severe (usually frontal) collisions where the magnitude and duration of the forward deceleration of the vehicle exceeds the design threshold level. The side airbags are designed to inflate in severe side-impact collisions. In all other accidents, the airbags will not inflate. To decrease the risk of injury from a deploying airbag, always wear seatbelts, sit upright in the middle of the seat as far back as possible from the airbag modules and do not lean against the door. Do not put objects in front of an airbag or around the seatback. Do not use rearward-facing child seats in any front passenger seat. The force of a deploying SRS airbag may cause serious injury or death. Please see your Owner's Manual for further instructions.

<sup>2</sup> Available on LE models with Leather Trim Package only.

<sup>3</sup> Not available on Corolla S.

**SPECIFICATIONS**

	CE	S	LE
<b>Mechanical/Performance</b>			
Engine	All-aluminum 1.8-liter DOHC 16-valve VVT-i 4-cylinder		
130 hp @ 6,000 rpm; 125 lb.-ft. @ 4,200 rpm			
Transmission			
Standard	5-speed manual transmission		
Available	4-speed automatic electronically controlled transmission (ECT) with overdrive		
Body construction	Unitized body		
Drivetrain	Front engine, front-wheel drive		
Suspension	Independent MacPherson strut front, torsion beam rear suspension with front and rear stabilizer bars		
Steering	Engine speed-sensing power-assisted rack-and-pinion		
Turning circle diameter, curb to curb (ft.)	36.1	36.1	36.1
Brakes	Power-assisted ventilated front disc/rear drum		
4-wheel Anti-lock Brake System (ABS) with Electronic Brake-force Distribution (EBD)	Available	Available	Available
<b>Exterior Dimensions</b>			
Overall height	58.5	58.5	58.5
Overall width	66.9	66.9	66.9
Overall length	178.3	178.3	178.3
Wheelbase	102.4	102.4	102.4
Track (front/rear)	58.3/57.5	58.3/57.5	58.3/57.5
Ground clearance	5.7	5.7	5.7
<b>Interior Dimensions</b>			
Head room	39.1/37.1	39.1/37.1 (37.8/37.0) <sup>1</sup>	39.1/37.1 (37.8/37.0) <sup>1</sup>
Shoulder room	53.1/53.5	53.1/53.5	53.1/53.5
Hip room	51.9/46.2	51.9/46.2	51.9/46.2
Leg room	41.3/35.4	41.3/35.4	41.3/35.4
Seating capacity	5	5	5
<b>Weights and Capacities</b>			
Curb weight (lbs.) manual/automatic	CE 2,502/2,568	S 2,524/2,590	LE 2,524/2,590
EPA passenger volume (cu. ft.)	90.3	90.3/88.5 <sup>1</sup>	90.3/88.5 <sup>1</sup>
Luggage capacity (cu. ft.)	13.6	13.6	13.6
Towing capacity (lbs.) <sup>2</sup>	1,500	1,500	1,500
Fuel tank (gal.)	13.2	13.2	13.2
<b>Tires</b>			
Size	P185/65R15	P195/65R15	P195/65R15
Type	All-Season	All-Season	All-Season
Spare	Temporary	Temporary	Temporary
<b>Mileage Estimates (estimated mpg city/highway)<sup>3</sup></b>			
Manual	32/40	32/40	32/40
Automatic	29/38	29/38	29/38

<sup>1</sup> With available power moonroof.

<sup>2</sup> Before towing, confirm your vehicle and trailer are compatible, hooked up properly and you have all necessary additional equipment. Do not exceed any Weight Ratings and review all instructions and cautions from your trailer hitch manufacturer and Toyota vehicle Owner's Manual.

<sup>3</sup> 2004 preliminary mileage estimates determined by Toyota. Final EPA mileage estimates not available at time of printing. Actual mileage may vary.

Some vehicles are shown with available equipment. Seatbelts should be worn at all times. For details on vehicle specifications, standard features and available equipment in your area, contact your Toyota dealer. A vehicle with particular equipment may not be available at the dealership. Ask your Toyota dealer to help locate a specifically equipped vehicle. Specifications, standard features and available equipment are based upon information available at the time of printing, are subject to change without notice, are for mainland U.S.A. vehicles only and may differ in the state of Hawaii and in other regions.

1-800-GO-TOYOTA

Have you logged 100,000, 200,000 or more miles on your Toyota with the original engine, transmission and drivetrain? If you have, give us a call at 1-800-GO-TOYOTA and tell us your story. [toyota.com](http://toyota.com)

©2003 Toyota Motor Sales, U.S.A., Inc.