



# 04 SEQUOIA

4x4 Limited shown in Silver Sky Metallic with available color-keyed rear spoiler

SURROUNDED BY SPACE, YOU'LL SUDDENLY FEEL CLOSE.

## 04 MODEL GRADES

### Features you'll find on the SR5 include:

- 4.7-liter 240-hp DOHC i-FORCE V8
- Vehicle Stability Control (VSC)<sup>1</sup> + Traction Control (TRAC)
- Vehicle Stability Control (VSC)<sup>1</sup> + 4-wheel Traction Control (TRAC)<sup>2</sup>
- Anti-lock Brake System (ABS) with Brake Assist<sup>3</sup>
- Available 4-wheel drive
- 5-link rear suspension
- Power outside mirrors
- Power-down rear window with electric defroster
- Deluxe 3-in-1 AM/FM Cassette/CD with six speakers
- Available rear-seat DVD entertainment system

### Features you'll find on the Limited include:

- Leather trim on the front captain's chairs, second- and third-row seats, doors and steering wheel
- Dual front and rear defroster-linked CFC-free digital automatic climate control<sup>4</sup>
- Steering wheel-mounted audio controls
- 17" aluminum alloy wheels

<sup>1</sup>See Available Packages and Options section footnote 3 for more information on Toyota's Vehicle Stability Control (VSC).

<sup>2</sup>4-wheel-drive models only.

<sup>3</sup>See Available Packages and Options section footnote 2 for more information on Toyota's Brake Assist.

<sup>4</sup>Available on SR5, standard on Limited.

**MODEL GRADE FEATURES**
**EXTERIOR**

SR5 Limited

SR5 Limited

Multi-reflector halogen headlamps with auto-off feature	S	—	Color-keyed power remote-controlled heated outside mirrors with auto-retract feature, door handles, fender flares, running boards, grille surround and body side moldings with chrome insert	—	S
Multi-reflector halogen headlamps with auto on/off feature	—	S	Solar tinted glass	S	S
Integrated fog lamps	O	S	Washer-linked variable intermittent windshield wipers	S	S
130-amp alternator	S	—	Privacy glass on rear quarter and tailgate windows	S	—
150-amp alternator	P	S	Privacy glass on rear side, quarter and tailgate windows	—	S
16" styled steel wheels with chrome wheel arch moldings and P245/70R16 tires (2WD models)	S	—	Mudguards	S	S
16" styled steel wheels with color-coordinated fender flares and P265/70R16 tires (4WD models)	S	—	Front suspension, fuel tank and transfer case skid plates	S	S
17" aluminum alloy wheels with P265/65R17 tires	P	S	Roof rack	O	S
Multi-Mode 4-wheel drive with locking center differential (4WD models)	S	S	Towing hitch receiver and 7-pin connector	P	S
Color-keyed power remote-controlled outside mirrors, door handles, body side moldings and grille surrounded with gray inserts	S	—			

**INTERIOR**

SR5 Limited

SR5 Limited

Leather-wrapped steering wheel with mounted audio controls	P	S	Ten cup holders (total)	S	S
Tilt steering wheel	S	S	Multi-function remote keyless entry system	O	S
Green-illuminated analog instrument cluster with speedometer, tachometer and fuel gauge meters; LCD odometer with twin tripmeters; and seatbelt disconnect, airbag, door-ajar, battery, oil pressure, brake, check engine and low-fuel level warning lights	S	S	Illuminated entry system	S	S
Multi-function center console with front and rear dual cup holders, dual 12V auxiliary power outlets, covered armrest storage compartment and notepad holder	S	S	Digital quartz clock	S	S
Multi-function accessory meter with compass, outside temperature, current and average fuel consumption, fuel range functions and HomeLink® <sup>1</sup> universal transceiver	P	S	Cruise control	S	S
Dual zone front and rear defroster-linked CFC-free digital automatic climate control	O	S	Maplights	S	S
Defroster-linked CFC-free automatic climate control	S	—	Cargo area 12V auxiliary power outlet and grocery bag hooks	S	S
Deluxe 3-in-1 AM/FM Cassette/CD with six speakers	S	—	Remote hood and fuel-filler door releases	S	S
JBL Premium 3-in-1 AM/FM Cassette/CD with 10 speakers	O	S	Fabric-trimmed doors with integrated speakers, map pockets and courtesy lamps	S	—
JBL Premium 3-in-1 AM/FM Cassette/6-disc in-dash CD changer and 10 speakers	O	O	Fabric-trimmed multi-adjustable front captain's chairs with adjustable headrests	S	—
Power windows and door locks with driver and front passenger one-touch auto up/down with jam protection	S	S	Fabric-trimmed 60/40 split fold-down/tumble second-row bench seat with adjustable headrests and center armrest	S	—
Power-down rear window with electric defogger and intermittent wiper	S	S	Fabric-trimmed 50/50 split third-row bench seat with recline/slide/fold-down/tumble/remove functions and adjustable outboard headrests	S	—
Auto-dimming electrochromic rearview mirror	O	S	Leather-trimmed doors with integrated speakers, map pockets and courtesy lamps	P	S
Dual sun visors with illuminated vanity mirrors, sliding extensions and secondary visor	—	S	Leather-trimmed power-adjustable heated front captain's chairs with 8-way adjustable driver's seat and adjustable headrests	P	S
Dual sun visors with vanity mirrors and sliding extensions	S	—	Leather-trimmed 60/40 split fold-down/tumble second-row bench seat with center armrest and adjustable headrests	P	S
			Leather-trimmed 50/50 split third-row bench seat with recline/slide/fold-down/tumble/remove functions and adjustable outboard headrests	P	S
			Metal-tone interior trim	—	S

S = Standard

O = Optional

— = Not Available

P = Feature available only as part of an option package.


 SR5 standard  
16" styled steel wheel

 SR5 available  
16" split 3-spoke  
aluminum alloy wheel

 SR5 available  
Limited standard 17" split 5-  
spoke aluminum alloy wheel

<sup>1</sup> HomeLink® is a registered trademark of Johnson Controls, Inc.

Toyota Sequoias are designed to meet most off-road driving requirements. Abusive use may result in bodily harm or damage. Toyota encourages responsible operation to protect you, your vehicle and the environment. Some vehicles are shown with available equipment. Seatbelts should be worn at all times. Please do not allow passengers to ride in the cargo area. Towing receiver hitches/ball mount kits are not intended to provide crash protection. For details on vehicle specifications, standard features and available equipment in your area, contact your Toyota dealer. A vehicle with particular equipment may not be available at the dealership. Ask your Toyota dealer to help locate a specifically equipped vehicle.

**AVAILABLE PACKAGES AND OPTIONS**
**ALL MODEL OPTIONS**

- Daytime Running Lights (DRL)
- Power tilt/slide moonroof with sunshade<sup>6</sup>
- Rear-seat DVD entertainment system with rear audio and wireless headphone capability
- Rear-seat audio system with wired headphone capability
- Driver and front passenger seat-mounted side airbags and front side curtain airbags<sup>5</sup>
- Rear load-leveling suspension<sup>7</sup>
- JBL Premium 3-in-1 AM/FM Cassette/6-disc in-dash CD changer and 10 speakers

**SR5 PACKAGES**

**Preferred Package** — includes leather-trimmed interior (seats and steering wheel) with power-adjustable front captain's chairs with adjustable headrests and steering wheel-mounted audio controls

**Alloy Wheel Package #1** — includes 16" split 3-spoke aluminum alloy wheels with P265/70R16 tires, color-coordinated fender flares<sup>8</sup> and running boards, rear door privacy glass, 150-amp alternator, towing hitch receiver and wiring harness with 7-pin converter

**Alloy Wheel Package #2** — includes 17" split 5-spoke aluminum alloy wheels with P265/65R17 tires, color-coordinated fender flares<sup>8</sup> and running boards, rear door privacy glass, 150-amp alternator, towing hitch receiver and wiring harness with 7-pin converter

**Styled Steel Wheel Package** — includes 16" styled steel wheels with P265/70R16 tires and color-coordinated fender flares<sup>8</sup> (2WD SR5 models)

**Convenience Package** — includes heated dual color-keyed power remote outside mirrors, accessory meter with compass, outside temperature, current and average fuel consumption, fuel range functions and HomeLink<sup>®</sup><sup>1</sup> universal transceiver

**SR5 OPTIONS**

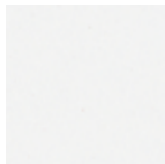
- Fog lamps
- Roof rack
- Rear door privacy glass
- Towing hitch receiver with 4-pin connector
- Dual zone front and rear defroster-linked CFC-free digital automatic climate control
- Fabric-trimmed power-adjustable front captain's chairs with adjustable headrests
- Remote keyless entry system
- Auto-dimming electrochromic rearview mirror with compass
- JBL Premium 3-in-1 AM/FM Cassette/CD with 10 speakers

**LIMITED PACKAGES**

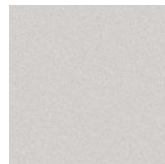
None

**LIMITED OPTIONS**

- Rear spoiler

**COLORS**


Natural White with Charcoal or Oak interior  
SR5 with Warm Silver trim



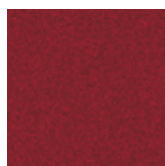
Silver Sky Metallic with Charcoal interior  
SR5 with Silver Sky trim



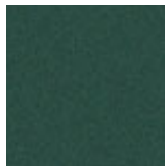
Phantom Gray Pearl with Charcoal or Oak interior  
SR5 with Warm Silver trim



Desert Sand Mica<sup>4</sup> with Oak interior  
SR5 with Warm Silver trim



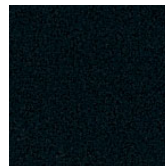
Cassis Pearl with Ivory, Stone or Taupe interior



Imperial Jade Mica with Charcoal or Oak interior  
SR5 with Phantom Gray trim



Blue Marlin Pearl<sup>4</sup> with Charcoal or Oak interior  
SR5 with Phantom Gray trim



Black with Charcoal or Oak interior  
SR5 with Phantom Gray trim

<sup>1</sup>HomeLink<sup>®</sup> is a registered trademark of Johnson Controls, Inc.

<sup>4</sup>Not available on Limited models.

<sup>5</sup>The Toyota driver, front passenger, front seat-mounted side airbags and side curtain airbags are Supplemental Restraint Systems (SRS). The driver and front passenger airbags are designed to deploy in severe (usually frontal) collisions where the magnitude and duration of the forward deceleration of the vehicle exceeds the design threshold level. The side airbags and side curtain airbags are designed to inflate in severe side-

impact collisions. In all other accidents, the airbags will not inflate. To decrease the risk of injury from a deploying airbag, always wear seatbelts, sit upright in the middle of the seat as far back as possible from the airbag modules and do not lean against the door. Do not put objects in front of an airbag or around the seatback. Do not use rearward-facing child seats in any front passenger seat. The force of a deploying SRS airbag may cause serious injury or death. Please see your Owner's Manual for further instructions.

<sup>6</sup>Requires Alloy Wheel Package #1 or #2 on SR5 models.

<sup>7</sup>Requires dual air conditioning on SR5 models.

<sup>8</sup>Color-keyed with Silver Sky Metallic.

**SPECIFICATIONS**
**SR5**
**Limited**
**Mechanical/Performance**

Engine	4.7-liter DOHC 32-valve i-FORCE V8; 240 hp @ 4,800 rpm; 315 lb.-ft. @ 3,400 rpm	
Ignition	Electronic, with Toyota Direct Ignition (TDI)	
Transmission	4-speed electronically controlled automatic overdrive (ECT)	
Body construction	Reinforced body-on-frame construction	
Suspension	Coil-spring independent double-wishbone front suspension with low-pressure gas-filled shock absorbers and stabilizer bar; 5-link coil-spring live axle rear suspension with low-pressure gas-filled shock absorbers and stabilizer bar	
Steering	Engine speed-sensing power-assisted rack-and-pinion	
Turning circle diameter, curb to curb (ft.)	42.3	
Brakes	Power-assisted 4-wheel ventilated disc brakes with load-sensing proportioning valve (LSPV) and Anti-lock Brake System (ABS) with Brake Assist <sup>1</sup> and Electronic Brake-force Distribution (EBD)	
Rear-wheel Traction Control (TRAC)	Standard (2WD models)	Standard (2WD models)
4-wheel Traction Control (TRAC)	Standard (4WD models) <sup>2</sup>	Standard (4WD models) <sup>2</sup>
Vehicle Stability Control (VSC) <sup>3</sup>	Standard	Standard
Multi-Mode 4-wheel drive with locking center differential	Standard (4WD models)	Standard (4WD models)

**Exterior Dimensions (in.)**

Overall height, unloaded (2WD/4WD)	73.2/74.0	75.8/76.2
Overall width (2WD/4WD)	76.4/78.0	78.0/78.0
with available tires	78.0/NA	NA/NA
Overall length	203.9	203.9
Wheelbase	118.1	118.1
Track (front/rear)	65.9/66.1	65.9/66.1

**Interior Dimensions front/middle/rear (in.)**

Head room	41.1/40.6/36.8	41.1/40.6/36.8
with moonroof	40.3/38.8/36.8	40.3/38.8/36.8
Shoulder room	62.1/62.2/60.9	62.1/62.2/60.9
Hip room	59.7/58.3/50.3	59.7/58.3/50.3
Leg room	41.6/38.4/29.8	41.6/38.4/29.8
Seating capacity	8	8

**Off-Highway**

Approach/departure angle (degrees)	2WD: 27/19; 4WD: 28/20	2WD: 27/19; 4WD: 28/20
Ground clearance (in.) (2WD/4WD)	10.0/10.6	10.4/10.6
Skid plates	On front suspension; fuel tank and transfer case skid plates on all models	

**Weights and Capacities**

Curb weight (lbs.) (2WD/4WD)	5,070/5,270	5,100/5,295
Gross Vehicle Weight Rating — GVWR (lbs.) (2WD/4WD)	6,500/6,600	6,500/6,600
Gross Combined Weight Rating — GCWR (lbs.)	11,800	11,800
Payload <sup>4</sup> (lbs.) (2WD/4WD)	1,430/1,330	1,400/1,305
Towing capacity <sup>5</sup> (lbs.) (2WD/4WD)	6,500/6,200	6,500/6,200
Cargo volume (cu. ft.) behind front/middle/rear seats <sup>6</sup>	128.1 <sup>7</sup> /65.3/27.8	128.1 <sup>7</sup> /65.3/27.8
Fuel tank (gal.)	26.1	26.1

**Tires**

Size — Standard	2WD: P245/70R16; 4WD: P265/70R16	P265/65R17
— Available	2WD/4WD: P265/70R16; 2WD/4WD: P265/65R17	NA
Type	Mud-and-Snow-rated radial tires	
Spare	Full-size, mounted under body	

**Mileage Estimates (mpg city/highway)<sup>8</sup>**

2WD	14/18	14/18
4WD	14/17	14/17

<sup>1</sup> See Available Packages and Options section footnote 2 for more information on Toyota's Brake Assist.

<sup>2</sup> 4-wheel traction control in 4WD only. Rear-wheel traction control in 2WD mode.

<sup>3</sup> See Available Packages and Options section footnote 3 for more information on Toyota's Vehicle Stability Control (VSC).

<sup>4</sup> Includes weight of occupants, available equipment and cargo; limited by weight distribution.

<sup>5</sup> Before towing, confirm your vehicle and trailer are compatible, hooked up properly and you have all necessary additional equipment. Do not exceed any Weight Ratings and review all instructions and cautions from your trailer hitch manufacturer and Toyota vehicle Owner's Manual. Note that the maximum amount you can tow depends on the total weight of any cargo, occupants and available equipment in the vehicle.

<sup>6</sup> Cargo and load capacity limited by weight and distribution.

<sup>7</sup> 127.9 cu. ft. with moonroof.

<sup>8</sup> 2004 preliminary mileage estimates determined by Toyota. EPA mileage estimates not available at time of printing. Actual mileage may vary.

All information presented herein is based on data available at the time of printing, is subject to change without notice and pertains specifically to mainland U.S.A. vehicles only (may differ in the state of Hawaii, Puerto Rico, the U.S. Virgin Islands and in other regions). 1-800-GO-TOYOTA

Have you logged 100,000, 200,000 or more miles on your Toyota with the original engine, transmission and drivetrain? If you have, give us a call at 1-800-GO-TOYOTA and tell us your story. [toyota.com](http://toyota.com)

©2002 Toyota Motor Sales, U.S.A., Inc.