

**CONTINENTAL GTC**  
EXHILARATE THE SENSES.



**BENTLEY**



WINGS WERE MADE FOR THE SKY.

THE ALLURE OF SHEER ELEGANCE.





THE HORIZON DOESN'T ACTUALLY EXIST.  
BUT WHY SHOULD WE LET THAT SPOIL YOUR PURSUIT?

NOTHING SHOULD COME BETWEEN YOU AND PURE FREEDOM.



THE SAME ROAD. A VERY DIFFERENT EXPERIENCE.





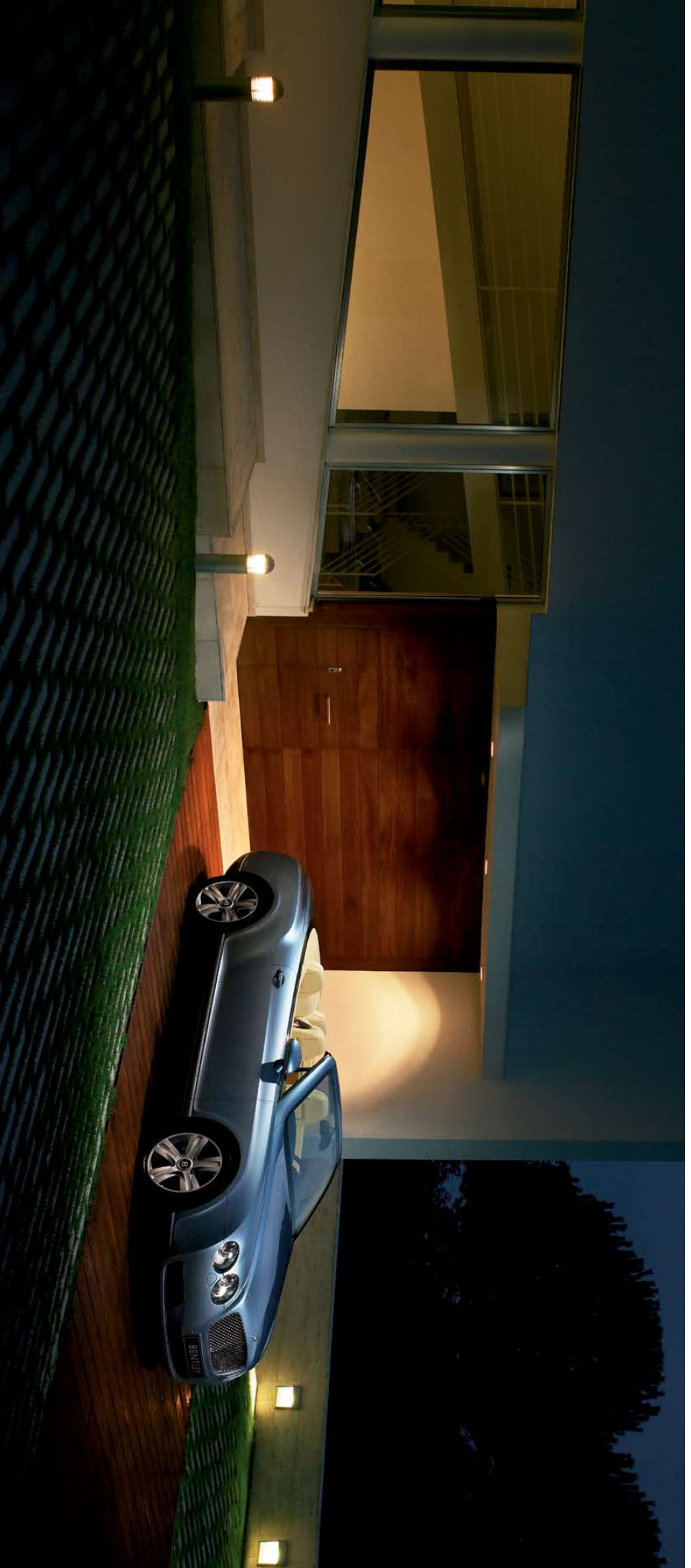
The image shows the front-left quarter of a light blue Bentley Continental GT convertible. The car is positioned in the lower-left corner, with its headlights, grille, and a portion of the hood visible. The license plate area contains the word "BENTLEY" in white capital letters on a black background. The rest of the image is dominated by a vast, bright blue sky filled with soft, wispy white clouds. The overall composition is clean and emphasizes the car's design against the natural beauty of the sky.

THE CAR BORN TO BE A CONVERTIBLE.

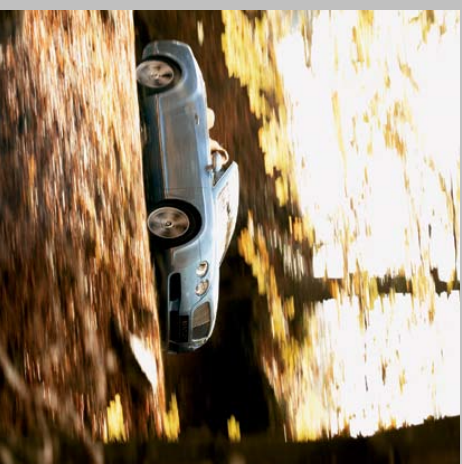
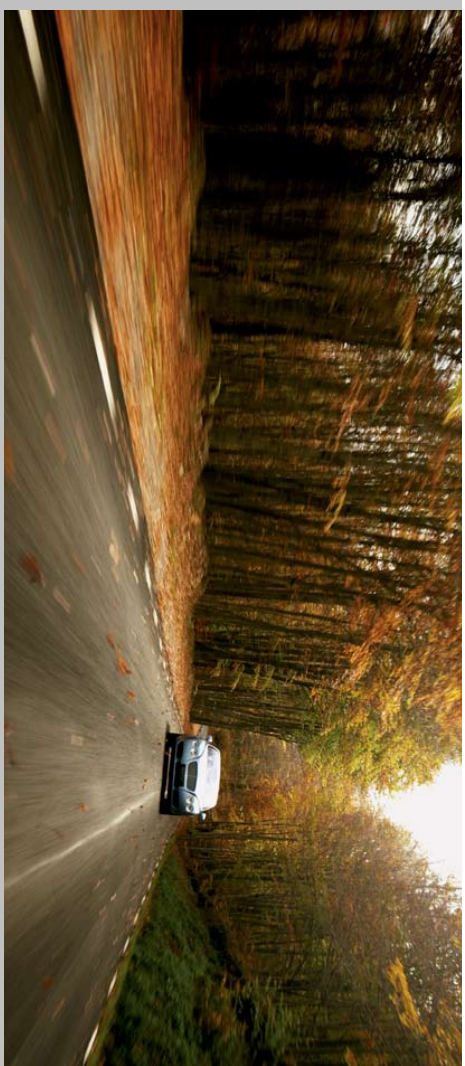
Prepare your senses. This is the most exhilarating convertible in the world. Sleek, magnificent lines shaped by the phenomenal Continental GT coupé, hailed as the most beautiful car in the world. Powered by the same awesome 6-liter, 12-cylinder turbocharged soul. A phenomenon capable of taking you from standstill to 60 miles an hour in less than 5 seconds. Graced with the incomparable craftsmanship and refinement unique to the marque to create a cabin beyond compare. And then there is that moment. You touch that switch and the beautifully crafted roof glides effortlessly away. The heavens unveiled. The world around you brought tangibly closer. The horizon vanishing. Welcome to the Bentley Continental GT. Wings were made for the sky.

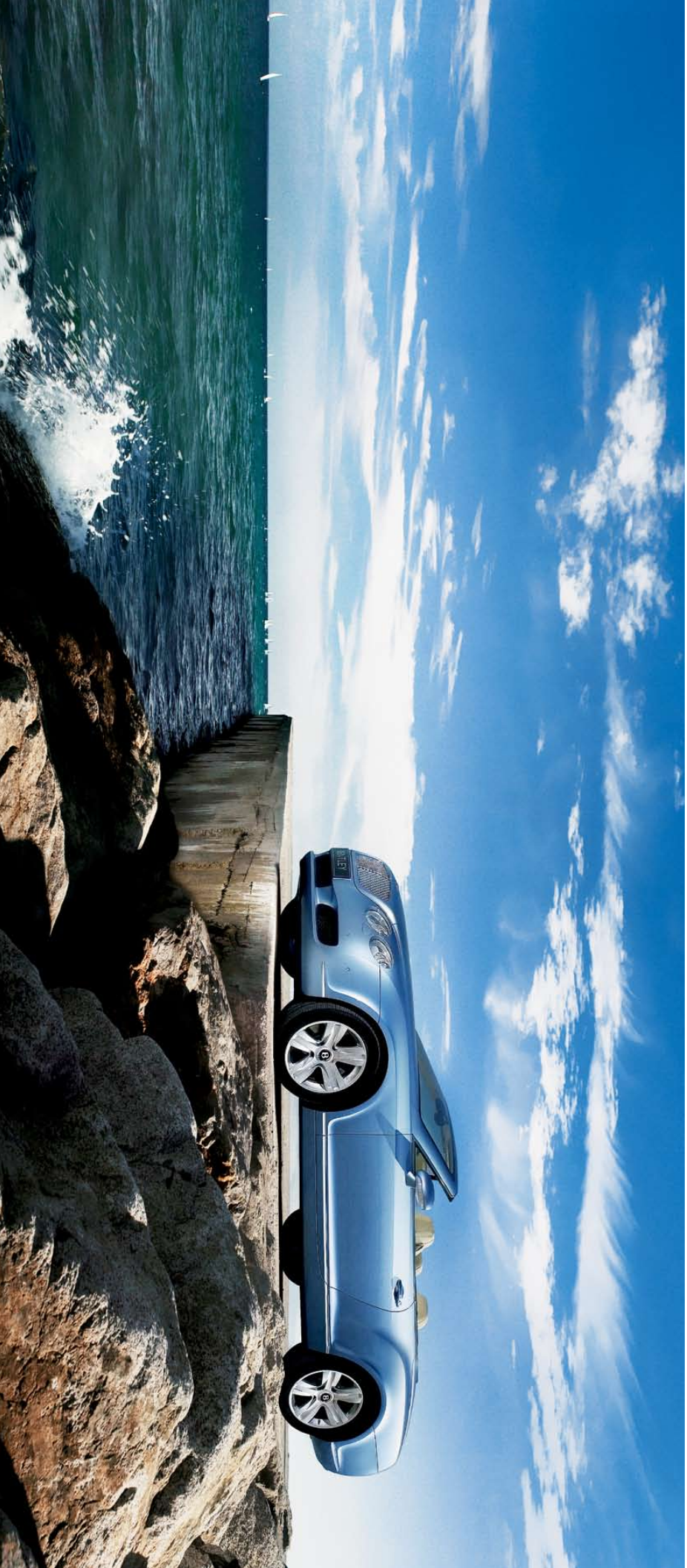






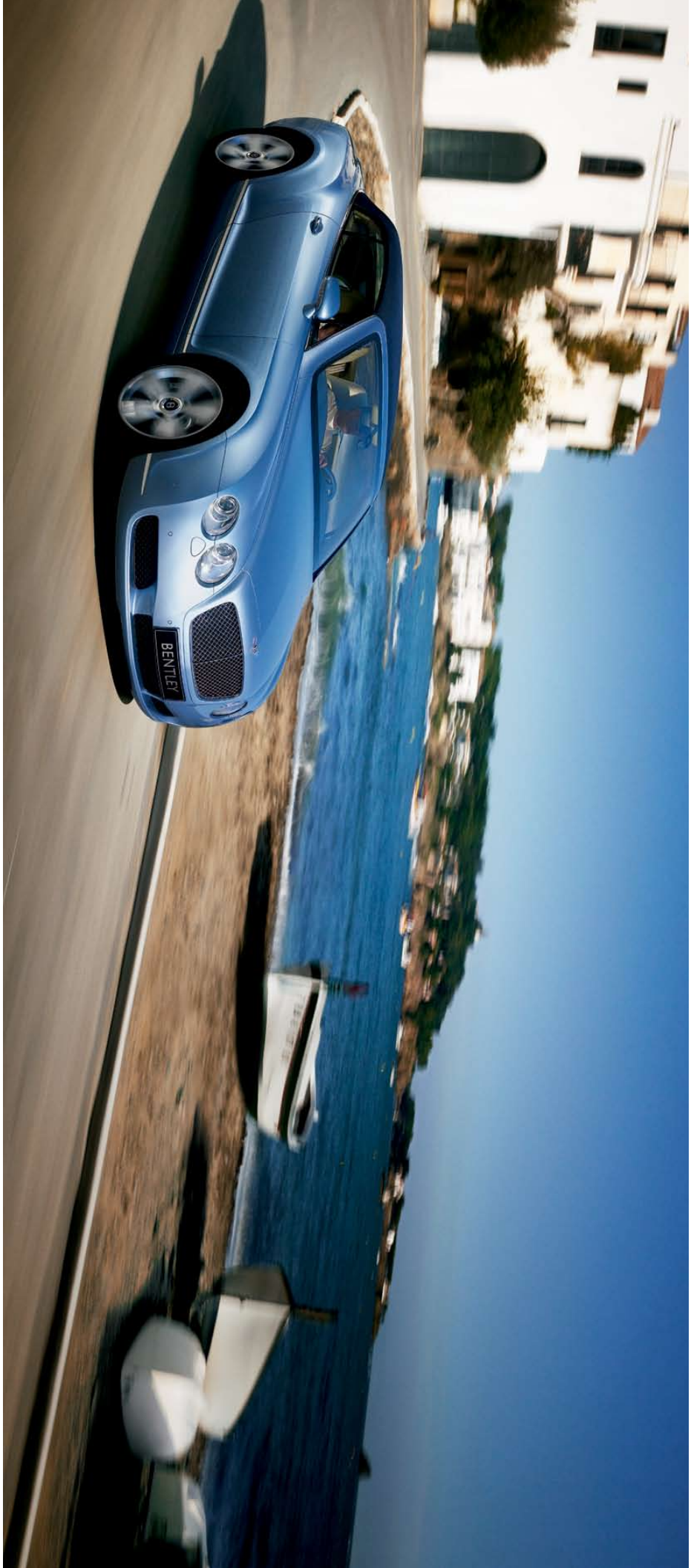
THE WORD HAS NOT YET BEEN WRITTEN TO DESCRIBE ITS POWER.







INFORMED. ENTERTAINED. INSPIRED.



## CONTINENTAL GTC - 2007 MODEL YEAR SPECIFICATION

### GENERAL

A two-door, 2+2 Grand Touring convertible

### DYNAMIC

Engine: 12-cylinder, 6-litre, twin-turbocharged engine

Power: 552hp / 560PS / 411kW @ 6100rpm

Torque: 650Nm / 479 lb-ft @ 1600rpm

Driveline: Continuous all-wheel drive

Transmission: 6-speed automatic transmission

Performance: Acceleration -  
0-60mph in 4.8 seconds  
(0-100km/h in 5.1 seconds)

Max. Speed - 195mph / 312km/h

Suspension: Independent, automatic air suspension that constantly monitors and adjusts ride height and damping according to road conditions. Manual driver adjustment facility via Infotainment system.



### EXTERIOR SPECIFICATION

- Traditional Bentley matrix grille integrated into bonnet and famed black winged 'B' badge to radiator shell, boot lid and wheel centres
- Twin bi-Xenon headlamps with integrated washer jets
- Rear LED taillighting and discrete high level stop-lamp execution integrated into body at the base of the hood
- Rear spoiler styled into the boot lid to improve stability at high speeds
- Twin oval stainless steel tail pipes
- 19" 5-spoke alloy sports wheels
- Branded front brake callipers (gloss black)
- Electronic Tyre Pressure Monitor (TPM)
- Colour keyed electronically adjustable door mirrors with heating, power folding and memory function – electrochromatic linked to internal rear view mirror
- Keyless entry and keyless ignition
- Power latching to driver and passenger doors for easy entry/exit
- Rain-sensing windscreen wipers
- Fabric hood with a choice of 5 colours
- Choice of 15 exterior paint colours

### INTERIOR SPECIFICATION

- Full premium grade hide interior – choice of 17 colours
  - Carpets and seatbelts to match all hides
  - Single tone, hide-trimmed multi-function steering wheel
  - Hide and chrome trimmed gear selector with manual shift change facility
  - Steering column mounted gearshift paddles
  - Stainless steel surfaced foot-pedals and driver's footrest
  - Engine start/stop button (linked to keyless entry/start system)
  - Burr Walnut unbleached premium veneer to fascia and front and rear console
  - Infotainment system incorporating DVD Satellite Navigation and hi-fi system
  - 6xCD changer to glove compartment
  - Bluetooth telephone system with remote SIM access profile
  - Telephone voice dialling (N/A Japan)
  - Electronic park brake with move-off assist (move-off assist N/A USA)
  - Electronically-adjustable front seats with memory function
  - Electronic climate control
- COST OPTIONS**

### EXTERIOR

- 19" 5-spoke alloy sports wheel in chrome finish (standard design)
- 19" 7-spoke alloy sports wheel in bright machined and chrome finish
- 19" 7-spoke alloy sports wheel in painted and chrome finish
- 19" 9-spoke two-piece alloy sports wheel
- 20" 7-spoke alloy sports wheel in bright machined and chrome finish

### INTERIOR

- Choice of upgraded veneers – Birds Eye Maple, Madrona, Piano Black, Dark Stained Burr Walnut
- Veneer inserts to door and rear quarter panels
- Heated hide trimmed 4-spoke steering wheel
- Two-tone hide trimmed multi-function steering wheel
- Lumbar massaging to both front seats

### CONVENIENCE

- Remote controlled garage door opener
- Valet parking key
- Cordless privacy handset for telephone in centre armrest (only available in certain markets)
- Power boot opening and closing (std USA)
- TV tuner to infotainment system (only available in certain markets)
- Space saver spare wheel in lieu of tyre inflation/repair kit (std in certain markets)
- Satellite radio (Sirius) (USA only)\*

\*Available from 2006

MULLINER.  
YOUR PERSONAL EXPRESSION.

The Continental GTC delivers the understated style and phenomenal power that only a Bentley can. Created with a passion to be relished. A passion that permeates down to the finest details. From the handcrafted stitching of the exquisite hides to the perfection of the veneers. Passion that can only come from Bentley's coachbuilder, Mulliner. With a heritage and experience second to none, Mulliner's skilled artisans provide a quality which is unsurpassed. And one which makes the Continental GTC truly unique.





Clockwise: Mulliner alloy fuel filler cap, embossed 'BENTLEY' to seat facings, deep-pile carpet mats with hide trimming (matched to carpets).

## FURTHER OPPORTUNITIES FOR PERSONALISATION.

### MULLINER OPTIONS

- Mulliner alloy fuel filler cap
- Contrast stitching to seats and door panels
- Cross-stitching to seats and door panels (in contrast)
- Embossed 'BENTLEY' to seat facings
- Aluminium fascia panels (compatible only with Dark Stained Burr Walnut veneer or Piano Black veneer and single cone interior colour scheme)
- 4-spoke wood and hide steering wheel available in Burr Walnut, Dark Stained Burr Walnut, Madrona and Piano Black
- Lambswool rug (to both front footwells and matched to carpets)
- Deep-pile carpet mats with hide trimming (matched to carpets)
- Choice of premium veneers - Chestnut and Olive Ash



<b>ENGINE</b>		<b>DIMENSIONS</b>	
Engine Capacity	5998cc	Overall Length	4804mm
Bore / Stroke	84mm / 90.2mm	Width Across Body	1916mm
Max. Power	552bhp / 560PS / 411kW* @ 6100rpm	Width Across Mirrors	2101mm
Max. Torque	650Nm, 479-lb-ft @ 1600rpm	Width With Mirrors Folded	1965mm
Compression Ratio	9.0:1	Height	1398mm
Emission Level	EU 4 / LEV 2	Wheel Base	2745mm
Fuel	98 (95) RON	Track Front / Rear	1623 / 1607mm
Battery (starter/hoist)	55Ah / 95Ah	Turning Circle (kerb to kerb)	11200mm
Alternator	190A	Front Leg-room	1074mm
<b>WEIGHTS</b>		Rear Leg-room	743mm
Kerb Weight	2475kg 5456 lb	Elbow Width Front / Rear	1578 / 1388mm
Gross Vehicle Weight	2900kg 6393 lb	Boot Floor Length (max)	1081mm
Front Axle Weight	1550kg 3417 lb	Boot Floor Width (min)	805mm
Rear Axle Weight	1460kg 3219 lb	Boot Loading Ht. (fill ht.)	706mm
<b>PERFORMANCE</b>		Boot Volume	235L
Max. Speed	195mph / 312km/h	Fuel Tank Capacity	90L
Accn. 0-60 mph	4.8s		
Accn. 0-100 km/h	5.1s		

For further information please either contact your dealer, visit [www.bentleymotors.com](http://www.bentleymotors.com) or call from:

The UK: 0800 100 5200  
 North America: +1 800 777 6923  
 Continental Europe: +49 (0) 1805 BENTLEY (2368539)  
 Australia: 1800 158 659  
 New Zealand: 0800 157 232  
 Singapore: 6538-0938  
 Malaysia: 1800 806 131  
 Thailand: 1800 444 888  
 Indonesia: 0018 036 578 72  
 Japan: 0120 97 7797  
 The rest of the world: +44 (0) 1270 535 032

The model presented in this brochure is subject to further development and the specification can change. The illustrations may show items of optional equipment which do not form part of the standard specification. Your Bentley dealer will always have the latest information. The names Bentley, Continental GTC and the 'B' in wings device are registered trademarks. © 2006 Bentley Motors Limited.

\*Power ratings are based on 98 RON fuel