

2008 CHRYSLER
SEBRING
CONVERTIBLE



ENGINEERED BEAUTIFULLY

It is a place where engineering and beauty come together. It embodies a convergence of craftsmanship with technology and functionality with design. Built to entice with every drive in the most natural of manners, it represents a passion for ingenious engineering and stunning style. Engineered beautifully, this is a vehicle unlike any other.

THE ALL-NEW CHRYSLER SEBRING CONVERTIBLE.



**THE 2008 CHRYSLER SEBRING CONVERTIBLE INCLUDES
A LIFETIME POWERTRAIN LIMITED WARRANTY.**



No deductible. See dealer for a copy of limited warranty and details.
Non-Transferable. Not available on certain fleet vehicles.



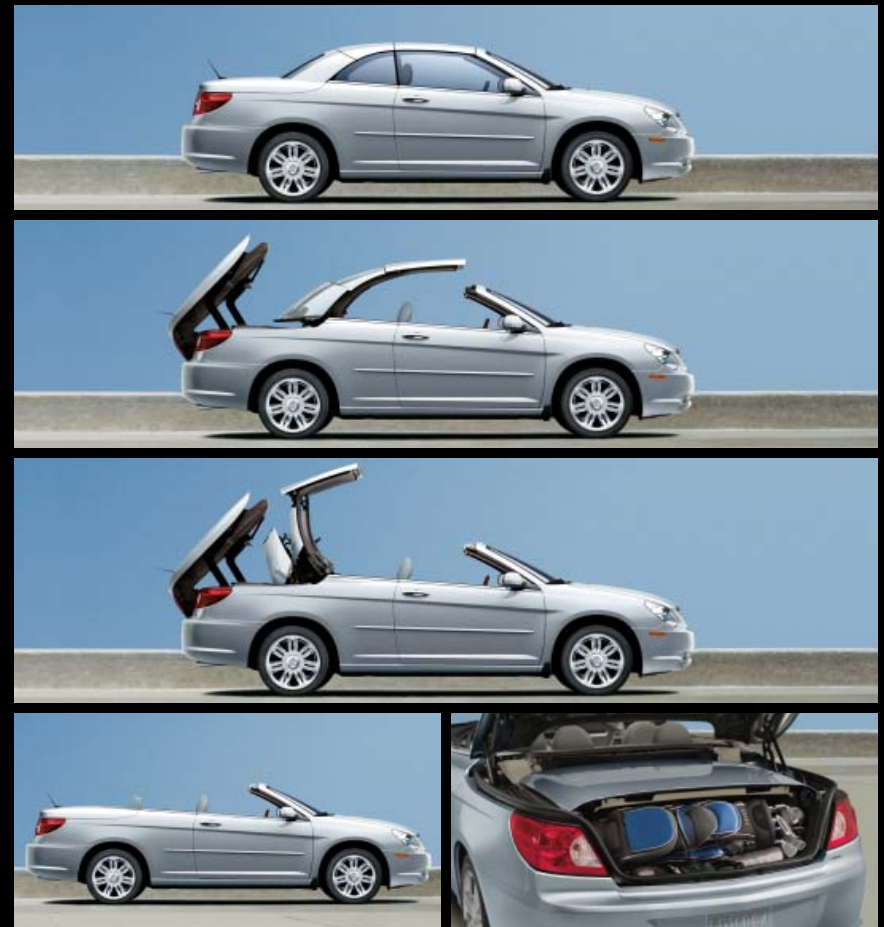
Sebring Convertible Limited in Inferno Red Crystal Pearl

LIMITED

The journey began with the cleanest of slates. The design started with one of the most storied of American convertibles and continues with a marvel of modern technologies. The all-new Chrysler Sebring Convertible Limited has officially arrived. As is the case with each of Sebring's three distinct tops, the available retractable hardtop features electronic latching and, with the simple push of a button on one's key fob or instrument panel, demonstrates a mechanical choreography that cannot be matched. The transition from top up to top down with hardshell tonneau in place is executed in seconds. Sebring Convertible's prowess continues into its power plant. The standard 3.5L High Output 24V V6 drives the Limited's 18-inch aluminum wheels with a sprinter's spirit. Sebring's available Electronic Stability Program (ESP) provides both confidence and poise, complementing a fully independent suspension that celebrates the contours and curves of every road.



Sebring Convertible Limited in Brilliant Black Crystal Pearl with hardtop and available 18-inch chrome-clad wheels



The sky is yours with the simple push of a button. A top retracts and folds, a trunk opens and closes, a tonneau emerges and engages with nothing more than a finger's command. Not only does Sebring provide a one-touch power roof system that is a marvel of engineering, it is also the world's first four-passenger convertible to offer either a retractable soft top, which is available in vinyl or soft cloth, or a retractable hardtop. While the cloth soft top is standard on Limited, choosing the available hardtop provides unparalleled four-season comfort. Whether outfitted with its soft top or available hardtop, Sebring Convertible is even able to accommodate two golf bags in its trunk (a perfect excuse to indulge in a spontaneous round at some remote course). Every convertible has a top protector that shows the amount of trunk space required for the convertible top to retract. This helps protect the retracted top from cargo damage and vice versa.



Sebring Convertible Limited interior in Medium Pebble Beige/Cream

The spirit of a convertible is lost entirely if the interior is not inviting enough to compete with the majestic allure of the wide-open world which it reveals. Sebring Convertible Limited lures four passengers into its toned and elegant setting with standard premium leather-trimmed seats and an interior that is framed with tortoiseshell, Satin Silver, and chrome accents.

Sculpted with brilliantly integrated seat belt shoulder harnesses, the Sebring's leather-trimmed seats feature available driver and front-passenger heated seats* to counter the chills of a fall night. At every stitch, Sebring's interior delivers nothing short of the most approachable quality.

*Included in Luxury Group.



Sebring Convertible Limited instrument panel



It is an instrument panel striking in its simple elegance and stunning in its technological sophistication. Anchored in the fuselage of Limited's winged dashboard is a multimedia marvel: the available voice-activated MyGIG® Multimedia Infotainment System* with Navigation and SIRIUS Satellite Radio.† MyGIG and SIRIUS together in one system offer the ultimate in information and entertainment whenever you

travel. Automatic temperature controls‡ and Homelink® system‡ are as adaptable as they are convenient. The ingenuity extends to Sebring Convertible's key fob, which provides both a remote start† function and one-touch button for the power retractable top itself. Celebrate the spirit of invention.

*MyGIG in-dash video playback capability is not available in all states. See your dealer for details. †SIRIUS, the SIRIUS dog logo, and related marks are registered trademarks of SIRIUS Satellite Radio Inc. Monthly subscription may apply. Programming is subject to change. Not available in AK and HI. For full terms and conditions, visit sirius.com. ‡Included in Electronics Convenience Group.

TOURING

Leave it to Chrysler Sebring Convertible to provide a package that so encourages motoring that it is worthy of the Touring name. With a myriad of available options, Sebring Convertible Touring can be tailored to suit your individual tastes while accommodating any imaginable journey. Whether you choose the standard power retractable cloth top, or breathtaking retractable hardtop, Sebring Convertible Touring's standard 189-horsepower 2.7L Flex Fuel V6 engine* has the wherewithal to match one's open-air exuberance stride for spirited stride. In the spirit of efficiency and innovation, Chrysler engineers massaged Touring's 2.7L V6 with a clever new manifold tuning valve that further improves the sensation of power in everyday driving while still providing exceptional efficiency.† They also designed the 2.7L power plant with Flex Fuel* capability — enabling it to employ E85, a cleaner-burning alternative fuel. Combined with standard 17-inch aluminum wheels and standard safety systems such as four-wheel disc antilock braking system (ABS), Sebring Convertible is equipped with features that set a new standard for both open and closed touring for four adults.

*Not available in CA, CT, MA, ME, NY, PA, RI and VT. A 2.7L gas engine is substituted. †EPA est. mpg 18 city, 26 hwy.



Sebring Convertible Touring in Light Sandstone Metallic with Taupe Cloth Top



Sebring Convertible provides the kind of instrumentation by which all other instrument clusters will be gauged. Touring's standard Electronic Vehicle Information Center (EVIC) delivers a three-line digital display to monitor everything from temperature and compass to individual tire pressures and trip data. The available heated/cooled cup holder* is a segment exclusive.† The two-toned interior showcases available heated leather-trimmed seats‡ with standard six-way power adjustments for Sebring Touring's fortunate driver and front passenger.

*Included in Electronics Convenience Group. †Based on 2007 *Automotive News* segmentation. ‡Included in Special Touring Group.



Sebring Convertible Touring in Marathon Blue Pearl

The quad headlamps assume an assertive expression. The available integrated fog lamps* add further function to a subtly sculpted fascia. From any angle, Sebring's stance radiates a poise that invites glances as effortlessly as it invites the sun itself. This is a vehicle which projects a confident style while emanating a dedication to function that is typically Chrysler.

Always accessible, Sebring Convertible is as comfortable being loaded with ingenuity as it is being loaded with four adults. For those drawn to the allure of open-air driving, Sebring Convertible was designed to fully appeal to both heart and mind.

*Included in Special Touring Group.



Every aspect of Sebring Touring's interior has been distilled down to the purest of forms. Ingenious simplicity is immediately evident in the one-touch button located to the left of the steering wheel and on the key fob for the retractable top, regardless of which top is employed. The audio controls* integrated on Touring's available leather-wrapped steering wheel* allow the driver to control the acoustic surroundings with a similar simplicity. The integrated audio input jack allows for the most seamless connection of an MP3 player and such. Sebring's cabin also benefits from the elegance of atmospheric lighting, which bathes the rear footwells in the coolest of moods.

*Included in Special Touring Group.

LX

Sebring gets its name from the remote Florida town whose name became synonymous with one of the greatest endurance motor races and the heroics such exploits embodied. The latest incarnation, the all-new Sebring Convertible, is equipped with features enduring in their own right. Beneath the gently straked hood lies a 2.4L DOHC 16V I-4 World Engine which uses dual Variable Valve Timing (VVT) to deliver 173 horsepower and most admirable efficiency.* Beneath the standard power retractable vinyl top lies an interior clad with the most sophisticated appointments, all easily accessed by the remote keyless entry. The key fob may also be equipped with an optional one-touch button for Sebring's retractable roof system while providing a button for the remote start system—the perfect luxury for either pre-warming or pre-cooling one's vehicle. The standard six-disc unit with AM/FM/MP3/CD compatibility with an auxiliary input jack is perfectly suited for personal MP3 players and the like. At every turn, Sebring's standard features serve as brilliant evidence that you need not leave luxury at home.

*EPA est. mpg. 20 city, 29 highway.



Sebring Convertible in Modern Blue Pearl



Every Sebring interior benefits from the projected ambience of electroluminescent lighting which illuminates opaque Silver gauge faces with black and gray graphics. The analog clock balances the dashboard with crisp and classic style. Functionality also runs deep into the Sebring's interior with innovations such as available YES Essentials®* stain resistant, odor resistant, antistatic seat fabric.† Sebring's one-touch down power windows continue a theme of ingenious simplicity that defines this convertible's wide-open spirit.

*Included in Travel Convenience Group. See vehicle Owner's Manual for fabric care instructions.

† Not compatible with aftermarket fabric-protecting coatings.

QUIETNESS

What resonates with those fortunate enough to drive a Chrysler Sebring Convertible at speed? The sound of thousands of hours of research by Chrysler engineers. An exceptionally stiff body was designed with **Computer Aided Engineering** that orchestrated the various frequencies of individual components and systems to achieve maximum noise reduction. Sebring Convertible achieves its success thanks to the sum of its parts. From the **aerodynamic headlamp modules** to the **available windscreen**, which was developed in the Aero-Acoustic Wind Tunnel in Auburn Hills, Michigan; every component of the Sebring Convertible was sculpted with silence in mind. As is the case with Sebring's **low-profile windshield wipers**, its **exterior mirrors** not only help counter wind noise, they divert water from the side windows. **Acoustic engine covers*** help keep the workings of a powerful engine confined to the compartment itself. **Extensive Pur® foam** body-in-white cavity sealing serves as the most masterful insulation. Sebring Convertible's sculpted sheet metal offers a markedly **improved coefficient of drag (Cd)** over its sleek predecessor, and enables the wind to whisper, rather than roar.

SAFETY AND SECURITY

As a convertible which leaves absolutely nothing to compromise, it was imperative for Chrysler designers to give Sebring every possible advantage when it comes to safety and security features. These efforts earned the U.S. Government's highest ★★★★★ Five-Star crash test rating† for side impacts. In addition, Sebring provides a body constructed with side-impact beams in every door, a front crumple zone, an energy-absorbing steering column and wheel, advanced multistage driver and front-passenger air bags, and seat-mounted inflatable driver and front-passenger supplemental side-impact air bags.‡ Technological ingenuity abounds in a **standard four-wheel disc antilock brake system (ABS)** and available **Electronic Stability Program® (ESP) with Brake Assist**. A standard **Tire Pressure Monitoring System** alerts a driver via a warning lamp, while the available **Electronic Vehicle Information Center (EVIC)** constantly monitors individual tire pressures. At every corner, when it comes to safety features, Sebring Convertible was born to provide.



*2.7L engine does not have an engine cover. †Star ratings are part of the U.S. Department of Transportation's safecar.gov program (www.safercar.gov). Model tested with standard side-impact air bags (SABs). ‡Always sit properly in the seat with the seat belt fastened. Children 12 and under should always be in a backseat correctly using an infant or child restraint system or the seat belt positioned correctly for the child's age and weight. †Always drive carefully, and consistent with conditions. Always wear your seat belt and obey traffic laws. No system, no matter how sophisticated, can repeal the laws of physics or overcome careless driving actions. Performance is limited by available traction, which snow, ice and other conditions can affect. When the ESP warning lamp in the speedometer flashes, the driver needs to use less throttle and adapt speed and driving behavior to prevailing road conditions.





TECHNOLOGY

It was designed to be a wish list delivered. Brilliant, technologically savvy comforts surround the cabin. Sebring Convertible's available segment-exclusive* **heated/cooled cup holder** keeps cool beverages nicely chilled or offers a warm drink to counter the alluring chill of a fall drive with the vehicle's top dropped. A switch on the console allows for the option of ambient temperature, heating up to 140°F or cooling to a near-freezing 35°F. With the available **remote start**, Sebring Convertible can also tailor the temperature of the cabin itself with thoughtful ease. Capable of starting the vehicle from up to 35 feet away, remote start enables a climate-controlled environment on even the hottest or coldest of days. As a voice-activated, hands-free, in-vehicle communications system, **UConnect®** is also always at the ready. Available on every Sebring Convertible, UConnect is ready to seamlessly integrate with your **Bluetooth®** capable cellular phone. Technological ingenuity also extends into the Sebring key fob. With the simple gesture of a push of a button, the mechanical choreography of a **retractable top** is executed with the greatest of ease. After all, if technology does not simplify your life, what place does it have in your driving experience?

*Based on 2007 *Automotive News* segmentation.

RETRACTABLE TOP SYSTEM

Sebring Convertible's retractable top system exemplifies the Chrysler mission of delivering ingenuity with ease. It was designed to open and close the tonneau cover and unlock, retract and stow the entire top system with no more than a button-push required on behalf of the driver. Its high-pressure hydraulic-powered flexibility allows it to disappear — whether in hardtop or soft-top form — into the trunk while still providing enough room for two golf bags.

- ▶ Sebring Convertible is the first four-passenger convertible to offer either a power soft top or an available retractable hardtop.
- ▶ Chrysler Group firsts include: convertible-top-down and express-down-front-windows button on the key fob; three-piece power retractable hardtop; automatic latching for soft top or retractable hardtop; power hard tonneau.
- ▶ A sensor in the trunk detects if the **Folding Luggage Protector*** is in place, ensuring that the trunk contents and top itself are protected prior to the stowing of the convertible top.

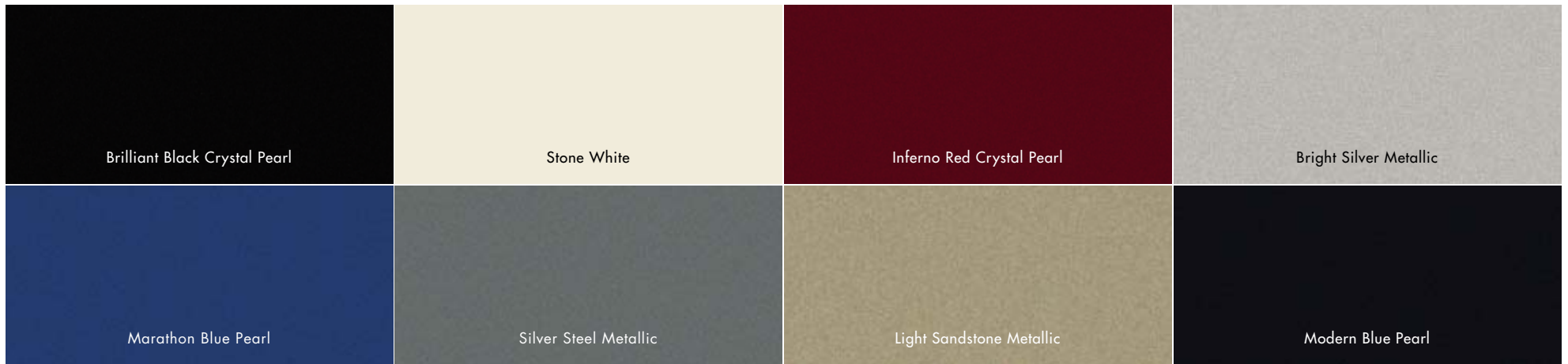
INFOTAINMENT

The segment-exclusive[†] **MyGIG® Multimedia Infotainment System[‡] with Navigation** uses its **20GB hard drive** to store music files, playlists, maps, points of interest, JPEG images, and more, while delivering the AM/FM/CD/MP3 playback you expect from even the simplest of systems.

- ▶ The **JPEG photo viewer** allows you to personalize the menu background, as you would on your personal computer. Images are easily imported onto the MyGIG hard drive via the face-mounted USB port.
- ▶ It can store over **1,000 digital music files**, easily imported from your personal CDs or via the USB port. It provides real-time traffic updates via **SIRIUS Satellite Radio**, which delivers over 130 channels, including 100% commercial-free music, sports, news, talk, entertainment, traffic and weather. Factory-installed SIRIUS Satellite Radio includes a one-year subscription. For more information, go to sirius.com.
- ▶ The same 6.5-inch screen that broadcasts its **GPS navigation** mapping also supports **DVD video playback[‡]** providing that your Sebring Convertible is parked.



*Items should not be placed on the Folding Luggage Protector. It could cause damage to the top and/or power mechanism. [†]Based on 2007 *Automotive News* segmentation. [‡]MyGIG in-dash video playback capability is not available in all states. See your dealer for details.



EXTERIOR COLORS

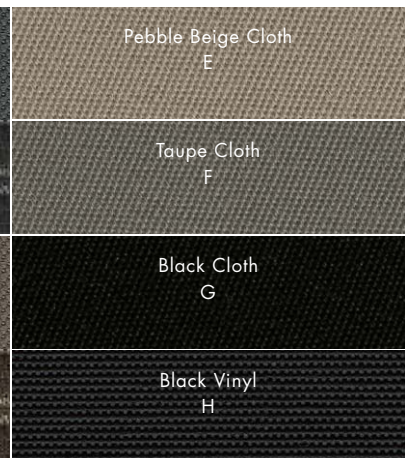
	Brilliant Black Crystal Pearl	Stone White	Inferno Red Crystal Pearl	Bright Silver Metallic	Marathon Blue Pearl	Silver Steel Metallic	Light Sandstone Metallic	Modern Blue Pearl
Sebring Limited	1G, 2E, 2G	1G, 2E	1G, 2E, 2G	1G	1G, 2E, 2G	1G	2E	1G, 2E, 2G
Sebring Touring	4F, 6F, 3G, 4G, 5G, 6G	4F, 6F, 3G, 4G, 5G, 6G	4F, 6F, 3G, 4G, 5G, 6G	3G, 5G	3G, 5G	3G, 5G	4F, 6F, 6H, 6G	4F, 6F, 3G, 4G, 5G, 6G
Sebring Convertible	5H, 6H, 7H, 8H	5H, 6H, 7H, 8H	5H, 6H, 7H, 8H	5H, 7H	5H, 7H	5H, 7H	6H, 8H	5H, 6H, 7H, 8H

*Not compatible with aftermarket fabric-protecting coatings. Go to yesessentials.com for care details.

INTERIOR COLORS



SOFT TOPS



WHEELS



A
18-inch chrome-clad wheel



B
18-inch aluminum wheel



C
17-inch aluminum wheel



D
16-inch wheel cover

	A	B	C	D
Sebring Limited	O	S		
Sebring Touring		O	S	
Sebring LX			O	S

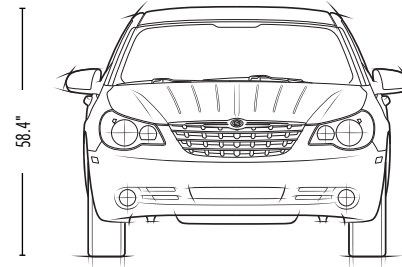
S = Standard, O = Optional.

TOPS



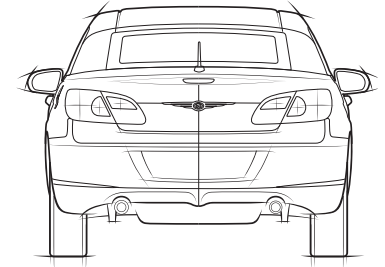
With configurations ranging from retractable hardtop to a retractable soft top in either vinyl or cloth, Sebring is available in a myriad of color combinations. The standard vinyl soft top is Black on LX. The cloth soft top is standard on Touring and Limited and is available in Black or Pebble Beige on Limited and in Black or Taupe on Touring. The optional hardtop is always painted to match Sebring's body color.

DIMENSIONS

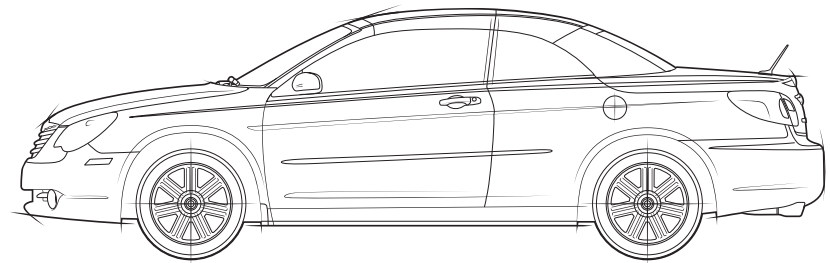


61.8"

71.5"



61.8"



108.9"

193.8"

	LX	Touring	Limited
ENGINE/TRANSMISSION			
2.4L DOHC 16V Dual VVT 1-4 World Engine/4-speed Automatic	24C		
2.7L DOHC 24V V6/4-speed Automatic		28E	
3.5L High Output V6/6-speed AutoStick®			26G
MECHANICAL			
Alternator — 120-amp	S		
— 140-amp		S	S
Battery — 525-amp, maintenance-free	S	S	S
Brakes — 4-wheel disc, antilock	S	S	S
Electronic Stability Program with All-Speed Traction Control		0	0
Engine Block Heater	0	0	0
Odometer with Outside Temperature Control	S		
Remote Start System — (Included in Electronics Convenience Group)	0	P	P
Speed Control — Electronic with stalk-mounted controls	S	S	S
Speedometer — 120-mph, with tachometer	S	S	S
Stabilizer Bars — Front and rear	S	S	S
Steering — Power, rack-and-pinion	S	S	S
Suspension — Normal-duty	S		
— Touring		S	S
— Dampers, front and rear	S	S	S
EXTERIOR FEATURES			
Antenna — Removable short-mast	S	S	S
Daytime Running Lamps	0	0	0
Decklid Power Release	S	S	S
Door Handles — Body-color	S	S	
— Bright			S
Exhaust Tips — Dual, bright			S
Fog Lamps — (Included in Special Touring Group)		P	S
Fuel Tank — 16.9-gallon	S	S	S
Glass — Tinted, front and rear Solar-Control	S	S	S
Grille — Bright/argent	S	S	S
Hard Tonneau Cover	S	S	S
Headlamps — Quad with LHD optics	S	S	S
— Automatic (included in Electronics Convenience Group)		P	P
Hood Insulation	S	S	S
Mirrors — Power, heated, body-color		S	S
— Black, power, heated	S		
Molding — Body-color	0	0	0
Stone Guard — Front	S	S	S
Tires — P215/65 R 16 BSW all-season	S		
— P215/60 R 17 BSW all-season	0	S	
— P215/55 R 18 BSW all-season touring (included in Special Touring Group)		P	S
— Compact spare	S	S	S
Tops — Power, vinyl	S		
— Power, cloth		S	S
— Power, body-color, retractable hard with trunk lid liner		0	0
Windshield Wipers — Variable intermittent	S	S	S

	LX	Touring	Limited
INTERIOR FEATURES			
Air Conditioning — Manual	S	S	S
— Automatic temperature control (included in Electronics Convenience Group)		P	P
Analog Clock	S	S	S
Bezels — Color-keyed	S		
— Satin Silver		S	S
— Tortoiseshell accent			S
Carpet — Floor	S	S	S
Console — Floor with fore/aft slide armrest, dual bin and rear courtesy light	S	S	S
Defroster — Rear-window	S	S	S
Door Locks — Power	S	S	S
Electroluminescent Cluster — Includes outside temperature reading	S	S	S
Electronic Vehicle Information Center (EVIC) — Switches located on the center stack switch bank allow the driver to configure from a menu of useful information		S	S
Floor Mats — Premium, front and rear (included in Convenience Group)	P	S	S
Heated/Cooled Cup Holder — Built into front center console maintains temperature range of 35° to 140° F (included in Electronics Convenience Group)		P	P
Mirror — Rearview, day/night with reading lamps	S	S	
— Rearview, auto-dimming with microphone (included with UConnect® and Electronics Convenience Group) with reading lamps		P	S
Power Outlets — 12V center stack-mounted	S	S	S
— 12V center console-mounted	S	S	S
Shift Knob — Urethane	S	S	
— Leather-wrapped (included in Special Touring Group)		P	S
Steering Column — Tilt/telescoping, manual	S	S	S
Steering Wheel — Sport	S	S	
— Leather-wrapped (included in Special Touring Group)		P	S
— Tortoiseshell trim			S
— Audio controls (included with Special Touring Group)		P	S
Storage Bin — Instrument panel	S	S	S
UConnect® Hands-Free Communication System/included with MyGIG® Multimedia Infotainment System	0	0/P	0/P
Windows — Tinted with front and rear Solar-Control	S	S	S
— Power, front driver's and passenger with one-touch down	S	S	S
SEATING			
Front — Cloth, low-back bucket	S		
— YES Essentials® Seat Fabric, low-back bucket (included in Convenience Group)	P	S	
— Leather-trimmed, low-back bucket (included in Special Touring Group)		P	
— Premium leather-trimmed, low-back bucket			S
— Power, 6-way driver's and front-passenger seats	S	S	S
— Heated front (included in Electronics Convenience Group)		P	P
Rear — Seats 2 passengers	S	S	S
ENTERTAINMENT SYSTEMS			
AM/FM 6-disc DVD MP3 (REQ)	S	S	S
AM/FM CD MP3 Navigation (RER) MyGIG® Multimedia Infotainment System TM		0	0
SIRIUS Satellite Radio System — Includes one-year subscription	S	S	S
Speakers — 6	S	S	
— 6, Boston Acoustics®		0	S

	LX	Touring	Limited
SAFETY AND SECURITY			
Air Bags⁽¹⁾ — Advanced multistage for driver and front passenger	S	S	S
— Supplemental driver and front-passenger seat-mounted/head/thorax	S	S	S
Child Seat Anchor System (LATCH)	S	S	S
Inside Emergency Trunk Lid Release	S	S	S
Remote Keyless/Illuminated Entry	S	S	S
Seat Belts — 3-point at all rear-seat positions	S	S	S
Security Alarm — (Included with Convenience and Electronics Convenience Groups)	P	P	S
Sentry Key[®] — Antitheft engine immobilizer	S	S	S
Tire Pressure Monitoring System — (Individual pressures show on EVIC on Touring and Limited)	S	S	S

PACKAGES			
Convenience Group — YES Essentials [®] Seat Fabric, security alarm, air filtration system, premium floor mats	0		
Electronics Convenience Group — Auto headlamps, air filtration system, auto-dimming rearview mirror, remote start system, automatic temperature controls, security alarm, HomeLink [®] Universal Transceiver, heated/cooled cup holder		0	
— Remote start system, auto headlamps, HomeLink Universal Transceiver, automatic temperature controls and heated/cooled cup holder			0
Luxury Group — Heated driver/front-passenger seats, windscreen, 18-inch chrome-clad wheels			0
Smoker's Group — Removable ash receiver, cigar lighter	0	0	0
Special Touring Group — 18-inch aluminum wheels and 18-inch tires, windscreen, leather-trimmed seats, heated front seats, leather shift knob and steering wheel, steering wheel-mounted audio controls and fog lamps		0	

S = Standard. P = Included in package noted in parentheses. 0 = Optional.

⁽¹⁾ MyGIG in-dash video playback capability is not available in all states. ⁽²⁾ Certified to the Federal Regulations that allow less forceful front air bags. Always use seat belts. Children 12 and under should always be in a backseat correctly using an infant or child restraint system, or the seat belt positioned correctly for the child's age and size.

YES Essentials is a registered trademark of Milliken & Company. HomeLink is a registered trademark owned by Johnson Controls, Inc. "SIRIUS" and the SIRIUS dog logo are registered trademarks of SIRIUS Satellite Radio Inc. All other trademarks, service marks and logos are the property of their respective owners. All rights reserved. For full terms and conditions, visit sirius.com. Prices and programming are subject to change. Not available in AK and HI. Chrysler, Mopar, SentryKey and UConnect are registered trademarks of Chrysler LLC. iPad is a registered trademark of Apple, Inc. Bluetooth is a registered trademark of Bluetooth SIG, Inc. Boston Acoustics is a registered trademark of Boston Acoustics, Inc.

	LX	Touring	Limited
ENGINE SPECIFICATIONS			
Engine Type	2.4L	2.7L	3.5L
Horsepower (SAE net @ rpm)	173 @ 6,000	189 @ 6,400	235 @ 6,400
Torque (lb-ft @ rpm)	166 @ 4,400	191 @ 4,000	232 @ 4,000
Displacement (cc)	2,360	2,736	3,518
Bore x Stroke (in)	3.46 x 3.82	3.38 x 3.09	96 x 81
Compression Ratio	10.5:1	9.9:1	10.0:1
Valve Train Configuration	16V, DOHC	24V, DOHC	24V, SOHC

WEIGHT AND CAPACITIES			
Recommended Fuel	Regular Unleaded	Regular Unleaded	Mid-Grade Unleaded
Fuel Tank Capacity (gal)	16.9	16.9	16.9
Fuel Economy⁽¹⁾ — City (mpg)	20	18	16
— Highway (mpg)	29	26	26
Base Curb Weight (lb)	3,742	3,847	3,959
Towing Capacity (lb)	1,000	1,500	2,000

EXTERIOR DIMENSIONS⁽²⁾			
Wheelbase	108.9	108.9	108.9
Overall Length	193.8	193.8	193.8
Overall Width	71.5	71.5	71.5
Overall Height	58.4	58.4	58.4
Track — Front	61.8	61.8	61.8
— Rear	61.8	61.8	61.8
Turning Diameter (ft)	36.5	36.5	36.5

	LX	Touring	Limited
INTERIOR DIMENSIONS⁽²⁾			
Maximum Seating Capacity	4	4	4
Front — Head Room w/soft	38.7	38.7	38.7
— Head Room w/hard	39.0	39.0	39.0
— Leg Room	42.4	42.4	42.4
— Shoulder Room	56.4	56.4	56.4
— Hip Room	53.3	53.3	53.3
Rear — Head Room w/soft	37.0	37.0	37.0
— Head Room w/hard	36.3	36.3	36.3
— Leg Room	33.5	33.5	33.5
— Shoulder Room	48.5	48.5	48.5
— Hip Room	44.2	44.2	44.2
Passenger Volume (cu ft)	88.3	88.3	88.3
Cargo Volume (cu ft) with top up	12.1	12.1	12.1

⁽¹⁾ EPA est. mpg.

⁽²⁾ All dimensions in inches unless otherwise noted.



Includes a **Lifetime Powertrain Limited Warranty**. No deductible. See dealer for a copy of limited warranty and details. Non-Transferable. Not available on SRT and certain fleet vehicles.

3/36 Limited Warranty. New Chrysler vehicles are covered by a 3-year or 36,000-mile Basic Limited Warranty. See your dealer for a copy of this limited warranty. Excludes normal maintenance and wear items.



Chrysler Auto Insurance. The only insurance guaranteed to repair your vehicle using Authentic Chrysler Collision Repair Parts by Mopar for as long as you own your Chrysler vehicle, and up to \$100 off your deductible when those repairs are done at a Chrysler dealership — all at rates that are tough to beat. For a free quote, visit www.chryslerautoinsurance.com or call (877) 244-1531 and mention keycode QLBXXX.



The Chrysler Gift Gallery pays tribute to the finer things in life. With everything from men's and women's apparel to accessories and designer collectibles, you are sure to take your style to the next level. View the entire collection of authentic merchandise at chrysler.com/giftgallery.



With **Chrysler Financial**, you can get great finance options, competitive rates and flexible payment plans. Learn more about your financing benefits and even submit a credit application at chryslerfinancial.com.



Chrysler Service Contracts. Your Chrysler is one of the most inspiring vehicles on the road. Why not protect your investment with a Chrysler Service Contract or Maintenance Plan? For more information, see your Chrysler dealer, call (800) 442-2666 or visit servicecontracts.chrysler.com.



REWARDS VISA[®] With the **Chrysler Rewards Visa** credit card, you earn points for every purchase you make which can be redeemed for anything at your Chrysler, Jeep or Dodge dealership — all with no annual fee! Visit chryslercreditcard.com for more information on how to apply!



SIRIUS Satellite Radio delivers over 130 channels, including 100% commercial-free music, sports, news, talk, entertainment, and more. Factory-installed SIRIUS Satellite Radio includes a one-year subscription. For more information, go to sirius.com.



All product illustrations, specifications, and competitive comparisons are based upon current information at the time of publication approval. Although descriptions are believed correct, complete accuracy cannot be guaranteed. Chrysler LLC reserves the right to make changes at any time, without notice or obligation, in prices, specifications, equipment, colors and materials, and to change or discontinue models. Some of the equipment shown or described throughout this catalog is available at extra cost. See your dealer for the latest information.

THE PROOF

Chrysler engineers create vehicles that let you enjoy your independence, realize your aspirations, and express your personal style. And Chrysler vehicles win the admiration of the demanding independent reviewers cited below.

"Chrysler raises the bar for affordable retractable hardtops." — *Edmunds.com*

"Chrysler's new Sebring Convertible is a winner" — *Autobytel.com*

Chrysler Sebring has also earned the U.S. Government's highest

★★★★★ Five-Star crash test rating for side impacts.*

*Star ratings are part of the U.S. Department of Transportation's safecar.gov program (www.safecar.gov). Model tested with standard side-impact air bags (SABs).



CHRYSLER.COM

Our Web site offers detailed information on all Chrysler products. You can virtually assemble any vehicle you like. Simply choose the model with your favorite color combinations, equipment, and features — and then price it all out. Plus you can visit these other helpful sites:

BUILD Create the Chrysler model of your dreams and get a price estimate.
chrysler.com/build

GET A QUOTE Get a quote on any Chrysler model from a local dealer.
chrysler.com/gaq

DEALERSHIPS Enter your ZIP code or city/state to find a Chrysler dealer in your area.
chrysler.com/dealers

WARRANTY Find everything you need to know about your Chrysler limited warranty.
chrysler.com/warranty

SEARCH Check out our new search engine and all its capabilities.
chrysler.com/search

GOLF Learn more about the Chrysler Club Championship.
chrysler.com/golf

TEST-DRIVE Select a Chrysler model and schedule a test-drive with a local dealer.
chrysler.com/satd



CALL 1-800-CHRYSLER.

Our friendly and knowledgeable product information specialists are available seven days a week, 8 a.m. – midnight (EST) to answer your questions.



VISIT YOUR DEALER.

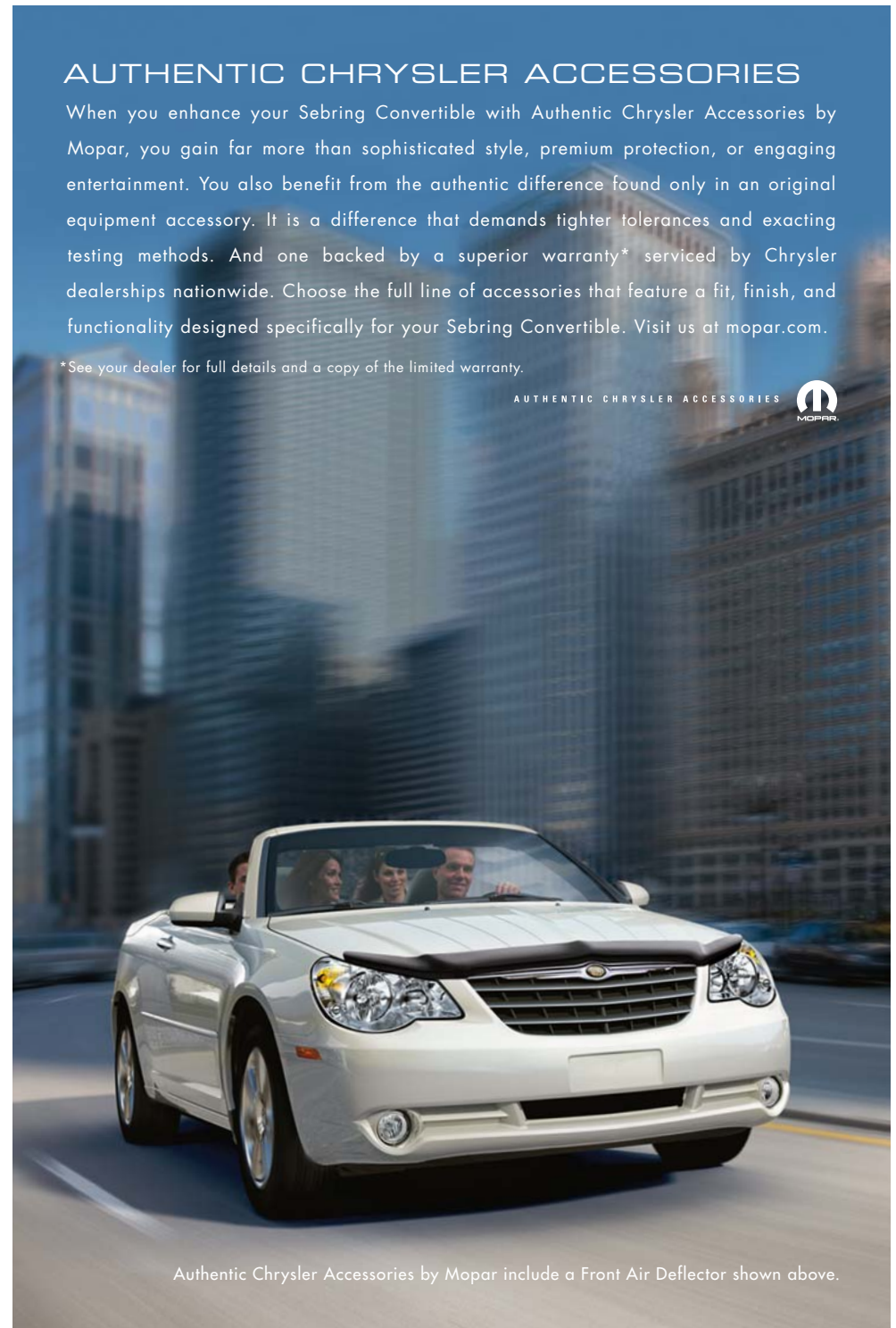
Your Chrysler dealer's knowledgeable and professionally trained staff will guide you through the shopping process with expert advice.

AUTHENTIC CHRYSLER ACCESSORIES

When you enhance your Sebring Convertible with Authentic Chrysler Accessories by Mopar, you gain far more than sophisticated style, premium protection, or engaging entertainment. You also benefit from the authentic difference found only in an original equipment accessory. It is a difference that demands tighter tolerances and exacting testing methods. And one backed by a superior warranty* serviced by Chrysler dealerships nationwide. Choose the full line of accessories that feature a fit, finish, and functionality designed specifically for your Sebring Convertible. Visit us at mopar.com.

*See your dealer for full details and a copy of the limited warranty.

AUTHENTIC CHRYSLER ACCESSORIES



Authentic Chrysler Accessories by Mopar include a Front Air Deflector shown above.

IT'S THE WAY OUR VEHICLES
COME TOGETHER
THAT SETS US APART.



CHRYSLER

CHRYSLER

ENGINEERED BEAUTIFULLY