



A Trio of Powertrains

On Fusion S, SE and SEL, get in gear with a standard 5-speed manual transmission and the energetic, not to mention fuel-efficient, 160-hp Duratec 4-cylinder engine that achieves 29 mpg highway¹ and a range of 467 miles on a full tank of gas. Or hit the road with the optional 5-speed automatic at hand. Step it up to the 221-hp Duratec V6 that works in tune with a first-in-class 6-speed automatic – quite the tempting option on SE and SEL models.



¹2008 EPA-estimated fuel economy for front-wheel drive.

[PERFORMANCE](#) ▶ | [INTERIOR](#) ▶ | [SPECIAL PACKAGE](#) ▶ | [TECHNOLOGY](#) ▶ | [SAFETY](#) ▶ | [SPECS](#) ▶

Truly inspiring, highly efficient PERFORMANCE.

You have no problem handling anything life throws your way. But can you handle the road? Fusion is engineered so you don't even have to think about it. The rigid chassis and nimble 4-wheel independent suspension deliver a smooth ride and super-sharp cornering.

Take precision to another level when you outfit your Fusion with available All-Wheel Drive (AWD). Loose gravel, slippery leaves, packed snow, soaking rains, rapid acceleration or simply any of those twists and turns you encounter when the pavement's dry – AWD distributes the power precisely to ensure maximum traction, balanced control and peak performance. AWD works so quickly and seamlessly, you'll never know it's happening.

Intake Variable Cam Timing (iVCT)

Standard on each powerplant to improve response and optimize efficiency, iVCT means you get the best of all worlds and an extremely broad torque curve that makes for on-demand acceleration across the rpm range.



SIRIUS
SATELLITE RADIO
THE BEST RADIO ON RADIO™



**Voice-Activated, ▲
DVD-Based
Navigation System**

Featuring more than 100 commands, this system displays maps, points of interest, an address book, turn-by-turn route guidance and more. It's optional on SEL.



**SIRIUS Satellite ▲
Radio¹**

Your passport to 100% commercial-free music, along with the best in sports, news, talk and entertainment. This factory-installed option includes a 6-month prepaid subscription.

PERFORMANCE ▶ | INTERIOR ▶ | SPECIAL PACKAGE ▶ | TECHNOLOGY ▶ | SAFETY ▶ | SPECS ▶

“Me time” just got more COLORFUL.

Feel pampered every day you drive a Fusion, especially if yours is enriched with the all-new ambient lighting option.² Scroll through 7 different hues of eye-pleasing illumination – in blue, red, yellow, green, aqua, purple or white – that play up the enticing interior look, front to back.

Bolstered, front bucket seats translate into a gratifying, controlled driving experience with a good deal of lateral support. An assuredness that takes on new meaning when optional leather-trimmed seating with color-contrasted stitching is desired. Further enhance the elation: Heated front seats – incorporating 2 warmth settings – are available, making Fusion even hotter than what its sleek, head-turning lines are telegraphing.

Audio Input Jack ▶

Turn Fusion's sound system into an extension of your iPod.[®] And keep humming along.

iPod[®] is a registered trademark of Apple Inc. All rights reserved.



¹Service not available in Alaska or Hawaii. See your Ford Dealer or contact SIRIUS at 1-888-539-7474 for more information.

²Late availability.



PERFORMANCE ▶ | INTERIOR ▶ | SPECIAL PACKAGE ▶ | TECHNOLOGY ▶ | SAFETY ▶ | SPECS ▶

IT'S ALL DOABLE — dining, dancing, day trips, DIY projects...

... no problem, for you or Ford Fusion. Its versatility borders on boundless. Flip and fold the seating to accommodate accordingly. Drop off the goods, and you're all ready for a good time out with 4 friends.

Since a quality ride should be a quiet ride for all, emphasis was placed on achieving a tight finish inside Ford's first fully digitally designed vehicle. Sound insulation strategically placed under the floor greatly reduces road noise, meaning Fusion may very well be your way to total bliss; however, pets, kids and backseat drivers may disrupt the peace and harmony.



Low-Liftover Trunk ▲

Massive, humongous, or really, really big — take your pick to best describe it. Within the trunk, and in easy reach, there are integrated hooks to keep shopping bags secure, plus a pair of quick-release levers for the spring-assisted rear seatbacks. Up front, the clamshell center console houses an out-of-site upper tier and oversized lower tier. In Fusion, everything's storable somewhere.

Fold-Flat Front-Passenger Seat ▶

Fusion is as flexible as it is delightful. There's a handy fold-flat front-passenger seat that lets you stow stuff measuring up to 9' in length on SE and SEL.





Appealing Inside Too ▲

Charcoal Black interior trim for the Sport Appearance Package is unique with contrasting red stitching – extending to the leather-wrapped steering wheel and center console. Get red-splashed cloth seat inserts standard (above), or go for the optional leather-trimmed seating and its rich red leather inlays (below). Either way, a brushed-aluminum face surrounds the radio.



PERFORMANCE ▶ | INTERIOR ▶ | SPECIAL PACKAGE ▶ | TECHNOLOGY ▶ | SAFETY ▶ | SPECS ▶

RACE-INFUSED appeal, including added agility.

Show the world what you're all about in your own special way. The stunning Sport Appearance Package is available on SE and SEL editions, and is reserved selectively for this exterior color palette: Black, Redfire Metallic and Silver Birch Metallic.

On the outside, the package turns that signature grille into black-chrome, frames fog lamps in body-color bezels, and adds a unique rear “lip” spoiler. Wide rubber rides on 18” machined-aluminum wheels with painted pockets. Perfect for the sport-tuned suspension – bigger rear stabilizer bar, stiffer springs, plus dampened struts and shocks – that makes for even greater ride and handling performance, taking cues from the NASCAR® Fusion.



NASCAR is a registered trademark of the National Association for Stock Car Auto Racing, Inc.




PERFORMANCE ▶ | INTERIOR ▶ | SPECIAL PACKAGE ▶ | TECHNOLOGY ▶ | SAFETY ▶ | SPECS ▶

Your Ford. Your life. Now in SYNC.

Introducing the new standard for in-vehicle communications. Ford SYNC™ developed in association with Microsoft® is a voice-activated, customizable media system that fully integrates Fusion with most Bluetooth®-enabled mobile phones and portable digital media players. With Microsoft Auto software actually embedded in your Ford vehicle, SYNC allows you to operate your Bluetooth-enabled mobile phone and your media player using simple voice commands. The system is so well-designed it's already garnering accolades, having received a 2007 Editor's Choice Award from *Popular Mechanics* magazine.



Link Your Digital Media Player

Just connect your player to SYNC's USB port, press the  button on the steering wheel and start talking. SYNC even charges most players for you.



Link Your Bluetooth-Enabled Mobile Phone

When you enter Ford Fusion with a compatible and paired Bluetooth-enabled mobile phone, SYNC automatically recognizes its presence. Then you just press a button and use simple voice commands to make calls, take calls and more – with both hands on the wheel.



Driving while distracted can result in a loss of vehicle control. Only use mobile phones (even with voice commands) and other devices not essential to driving when it is safe to do so. Microsoft is a registered trademark of Microsoft Corporation. The Bluetooth word mark is a registered trademark owned by the Bluetooth SIG, Inc. Go to SyncMyRide.com for more details. Coming Fall 2007.



Security Approach Lamps ▶

Fusion is as secure as it is safe. On top of the convenience of remote illuminated entry, SEL models feature security approach lamps under the heated outside mirrors.



A Wealth of Safety ▲

Fusion is standard-equipped with 6 airbags: 2 dual-stage front airbags, 2 front-seat side airbags, and 2 side-curtain airbags covering both outboard rows. The Personal Safety System® utilizes a network of sensors to deploy the driver and front-passenger front airbags in just the right manner at just the right time. By preventing wheel lockup whenever you have to stop hard, the 4-wheel disc Anti-lock Brake System (ABS) helps ensure stay-in-control steerability.

PERFORMANCE ▶ | INTERIOR ▶ | SPECIAL PACKAGE ▶ | TECHNOLOGY ▶ | SAFETY ▶ | SPECS ▶

SAFETY isn't an option.

Honestly, safety may not be sexy. But it sure does matter. Fusion is fully armed with the latest technology to resist, absorb and divert the force of an impact. Proof: The Insurance Institute for Highway Safety (IIHS) gave Fusion the highest protection ratings in frontal offset and side-impact crash testing.¹

Since collisions equate to energy, the key is managing impact force. At its core, Fusion boasts an energy-absorbing safety cell. It's not some futuristic solar-powered pod, but it is pretty advanced nonetheless. Should you ever experience a mishap, the steel safety cell channels crash forces away from you and your passengers. Carefully constructed crumple zones and robust rocker panels play major roles in Fusion's protection picture.

Keyless Entry ▶

A class-exclusive, built-in keyless-entry keypad – on Fusion SEL – unlocks at a touch. Fusion's got you covered, for certain.



¹Based on IIHS testing of the 2007 model-year Fusion.



Specifications

PERFORMANCE ▶ | INTERIOR ▶ | SPECIAL PACKAGE ▶ | TECHNOLOGY ▶ | SAFETY ▶ | SPECS ▶



FUSION S standard features include: 2.3L Duratec 16-valve I-4 engine • 5-speed manual transmission • 4-wheel disc Anti-lock Brake System (ABS) • Front and rear stabilizer bars • Personal Safety System® • Front-seat side airbags • 2-row side-curtain airbags • SecuriLock® passive anti-theft ignition system • Anti-theft perimeter alarm • Bright-chrome 3-bar grille • Remote keyless entry with 2 integrated fobs • Speed-sensitive windshield wipers • Air conditioning • AM/FM stereo/single-CD/MP3-capable audio system with 4 speakers • Audio input jack • 5-passenger seating • 4-way manual driver seat • 2-way manual front-passenger seat • 60/40 split-folding spring-assisted rear seat • Cloth seating surfaces • In-dash storage compartment • Steering wheel-mounted cruise control • Power windows, door locks and sideview mirrors • 16" steel wheels with deluxe wheel covers • P205/60R16 all-season tires • Tire Pressure Monitoring System



FUSION SE includes Fusion S standard features, plus: Fog lamps with chrome bezels • Body-color, power sideview mirrors • Premium AM/FM stereo/6-disc/MP3-capable audio system with 6 speakers • 6-way power driver seat with manual lumbar • Fold-flat front-passenger seat • Message center • Carbon-fiber center stack instrument panel appliqué • Dual illuminated visor vanity mirrors • Steering wheel-mounted cruise and audio controls • Map pockets • 16" machined-aluminum wheels

SE V6 includes all SE I-4 content, plus: 3.0L Duratec 24-valve V6 engine • 6-speed automatic transmission • Dual exhaust tips

AWD includes SE V6 content, plus: Traction Control • P205/60VR16 tires



FUSION SEL includes Fusion SE standard features, plus: Automatic headlamps • Power, heated sideview mirrors with security approach lamps • Keyless-entry keypad • Bright molding at beltline • Electronic Automatic Temperature Control • Auto-dimming rearview mirror • Unique center stack instrument panel appliqué • Compass • Analog clock • Leather-wrapped steering wheel • 17" machined-aluminum wheels • P225/50VR17 performance tires

SEL V6 includes all SEL I-4 content, plus: 3.0L Duratec 24-valve V6 engine • 6-speed automatic transmission • Dual chrome exhaust tips

AWD includes SEL V6 content, plus: Traction Control



Fusion competes in NASCAR,[®] marking the first time since 1968 that an all-new Ford model debuted in showrooms and on the track at the same time. It builds on a legacy nearing 600 Sprint Cup wins. In fact, Red Byron took the checkered flag in the first-ever NASCAR-sanctioned race, piloting a modified Ford over the sands of the Daytona Beach Road Course in 1948; there were 14,000 fans in attendance. Today, more than 75 million Americans pride themselves on being NASCAR fans. Ford Racing's Carl Edwards (pictured left in winning, high-speed form) loves the crowd roar nearly as much as the stock, production version of his #99 racer: "The Fusion is awesome. It's easy to drive. It's a fun car."

Specifications

- PERFORMANCE ▶ INTERIOR ▶ SPECIAL PACKAGE ▶ TECHNOLOGY ▶ SAFETY ▶ SPECS ▶

STANDARD FEATURES

MECHANICAL

- 150,000-mile tune-up interval¹
- Front-wheel drive (FWD)
- 4-wheel disc Anti-lock Brake System (ABS)
- Power rack-and-pinion steering
- Stabilizer bars – 24-mm front and 16-mm rear (17-mm rear on V6)
- Suspension – Front: independent Short- and Long-Arm
- Suspension – Rear: multilink independent

SAFETY/SECURITY

- Personal Safety System[®] for driver and front passenger – Includes dual-stage front airbags,² safety belt pretensioners, safety belt energy-management retractors, safety belt usage sensors, driver-seat position sensor, crash severity sensor, restraint control module and Front-Passenger Sensing System
- Front-seat side airbags
- 2-row side-curtain airbags
- Side-intrusion door beams
- Anti-theft perimeter alarm
- Battery saver
- Belt-Minder[®] safety belt reminder for driver and front passenger
- Child-safety rear door locks
- Emergency trunk release
- Illuminated entry
- LATCH – Lower anchors and tether anchors for child-safety seats
- Remote keyless-entry system (key-integrated)
- Safety belts – 3-point for all seating positions
- SecuriLock[®] passive anti-theft ignition system
- Tire Pressure Monitoring System (excludes spare)

¹Under normal driving conditions with routine fluid and filter changes.
²Always wear your safety belt and secure children in the rear seat.

SEATING

- 5-passenger
- 4-way manual driver seat
- 2-way manual front-passenger seat
- 60/40 split-folding spring-assisted rear seat with quick-release levers in trunk
- Front bucket seats

INTERIOR

- Accessory delay for power features
- Air conditioning
- Audio input jack – Center console
- Beverage holders – 6
- Dual visors with mirrors
- Floor mats – Front and rear carpeted
- Full center console with armrest and two-tiered storage
- Grocery bag hooks – Trunk-mounted
- In-dash storage compartment
- Overhead console with dome and map lights (not available with power moonroof)
- Power door locks
- Power points – 2 (12-volt)
- Power trunk release
- Power windows with one-touch-down driver-side feature
- Rear-seat fold-down center armrest with beverage holders
- Steering wheel-mounted cruise control
- Tilt/telescoping steering column

EXTERIOR

- Grille – Bright-chrome 3-bar
- Headlamps – Quad-beam halogen
- Rear-window defroster
- Sideview mirrors – Power
- Solar-tinted glass
- Windshield wipers – Speed-sensitive

WHEELS

- A** 16" Steel with Deluxe Wheel Cover
Standard on S
- B** 16" Machined-Aluminum
Standard on SE
- C** 17" Machined-Aluminum
Standard on SEL
- D** 18" Machined-Aluminum with Painted Pockets
Included in the Sport Appearance Package



Specifications

- PERFORMANCE ▶ INTERIOR ▶ SPECIAL PACKAGE ▶ TECHNOLOGY ▶ SAFETY ▶ SPECS ▶

FEATURES & OPTIONS

S with I-4				
SE with I-4				
SE with V6				
SEL with I-4				
SEL with V6				
MECHANICAL				
●	●	—	●	—
—	—	●	—	●
●	●	—	●	—
○	○	—	○	—
—	—	●	—	●
●	—	—	—	—
—	●	●	—	—
—	—	—	—	●
—	●	●	●	●
—	●	●	—	—
—	—	●	—	—
—	—	—	●	—
—	●	●	●	●
—	—	○	—	○
—	—	●	—	—
—	—	—	—	●
—	—	○	—	○
SEATING				
—	●	●	●	●
—	○	○	○	○
—	—	—	○	○
—	●	●	●	●
—	●	●	●	●
INTERIOR				
●	—	—	—	—
—	●	●	●	●
—	●	●	○	○
—	○	○	○	○
●	●	●	—	—
—	—	—	●	●
—	○	○	○	○
●	—	—	—	—
—	●	●	—	—
—	—	—	●	●
—	○	○	○	○
—	—	—	●	●
—	—	—	●	●
—	—	—	○	○
—	—	—	—	—
●	●	●	—	—
—	—	—	●	●
—	●	●	●	●

S with I-4				
SE with I-4				
SE with V6				
SEL with I-4				
SEL with V6				
EXTERIOR				
—	●	●	●	●
—	—	—	●	●
—	●	●	●	●
—	○	○	○	○
—	○	○	○	○
●	—	—	—	—
—	●	●	—	—
—	—	—	●	●
—	—	—	●	●
PACKAGES				
—	○	○	○	○
—	○	○	○	○

● Standard ● Available as Part of a Package ○ Optional — Not Available

Comparisons based on 2007 competitive models (Midsize Sedan class starting under \$21,000; excludes Mazda6) publicly available information and Ford certification data at time of release. Some features discussed may be optional. Vehicles shown may contain optional equipment. Features shown may be offered only in combination with other options or subject to additional ordering requirements or limitations. Dimensions shown may vary due to optional features and/or production variability. Following publication of the catalog, certain changes in standard equipment, options and the like, or product delays may have occurred which would not be included in these pages. Your Ford Dealer is the best source for up-to-date information. Ford Division reserves the right to change product specifications at any time without incurring obligations.

Audiophile is a registered trademark of Audiophile, Inc.
 ©2007 SIRIUS Satellite Radio Inc. "SIRIUS," the SIRIUS dog logo and "The Best Radio on Radio" are registered trademarks of SIRIUS Satellite Radio Inc.

Specifications

- PERFORMANCE ▶ INTERIOR ▶ SPECIAL PACKAGE ▶ TECHNOLOGY ▶ SAFETY ▶ SPECS ▶

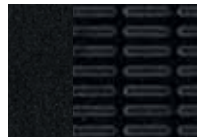
INTERIORS



Medium Light Stone Cloth
Standard on S and SE



Camel Cloth
Standard on S and SE



Charcoal Black Cloth
Standard on SE



Medium Light Stone Cloth
Standard on SEL



Camel Cloth
Standard on SEL



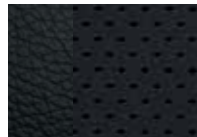
Charcoal Black Cloth
Standard on SEL



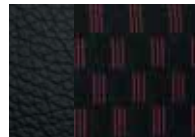
Medium Light Stone Leather
Available on SE and SEL



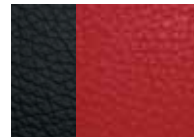
Camel Leather
Available on SE and SEL



Charcoal Black Leather
Available on SE and SEL



Red Cloth/Charcoal Black Vinyl
Standard on
Sport Appearance Package



Red/Charcoal Black Leather
Available on
Sport Appearance Package

MEDIUM LIGHT STONE

CAMEL

CHARCOAL BLACK¹

ALL MODELS

●	●	●	Silver Birch Metallic
●	●	●	Black
●	●	●	Redfire Metallic
●	●	●	Dark Ink Blue Metallic
●	●	●	Moss Green Metallic
●	●	●	Vapor Silver Metallic
●	●	●	White Suede
●	●	●	Light Sage Metallic
	●	●	Dune Pearl Metallic

¹Charcoal Black interior not available on Fusion S.

DIMENSIONS & RATINGS

EXTERIOR

Overall length	190.2"
Wheelbase	107.4"
Vehicle width (excluding mirrors)	72.2"
Height	57.2"

INTERIOR

Seating capacity	5
------------------	---

Front

Head room	38.7"
Shoulder room	57.4"
Hip room	54.0"
Leg room (max.)	42.3"

Rear

Head room	37.8"
Shoulder room	56.5"
Hip room	53.3"
Leg room (min.)	37.5"

Capacities

Passenger volume (cu. ft.)	100.7
Luggage volume (cu. ft.)	15.8
Total interior volume (cu. ft.)	116.5
Trunk liftover height	28.2"
Fuel capacity (gal.)	17.5

Horsepower and Torque

	hp/torque (lb.-ft.)
2.3L Duratec 16-valve I-4 engine – Manual	160 @ 6250/ 156 @ 4250
2.3L Duratec 16-valve I-4 engine – Automatic	160 @ 6250/ 156 @ 4250
3.0L Duratec 24-valve V6 engine – Automatic	221 @ 6250/ 205 @ 4800

Fuel Economy

	mpg city/hwy.
2.3L Duratec 16-valve I-4 engine – Manual	20/29
2.3L Duratec 16-valve I-4 engine – Automatic	20/28
3.0L Duratec 24-valve V6 engine – 6-speed automatic (front-wheel drive)	18/26
3.0L Duratec 24-valve V6 engine – 6-speed automatic (All-Wheel Drive)	17/25

Specifications

- PERFORMANCE ▶
- INTERIOR ▶
- SPECIAL PACKAGE ▶
- TECHNOLOGY ▶
- SAFETY ▶
- SPECS ▶

EXTERIORS



Silver Birch Metallic



Black



Redfire Metallic



Dark Ink Blue Metallic



Moss Green Metallic



Vapor Silver Metallic



White Suede



Light Sage Metallic



Dune Pearl Metallic

Ford uses clearcoat paint for beauty and protection. Colors shown are representative only. Not all colors are available on all models. See your dealer for actual paint/trim options. Vehicles shown may contain optional equipment.



New Vehicle Limited Warranty

We want your Ford Fusion ownership experience to be the best it can be. So under this warranty, your new vehicle comes with 3-year/36,000-mile Bumper-to-Bumper Coverage, 5-year/60,000-mile Powertrain Warranty Coverage, 5-year/50,000-mile Safety Restraint Coverage, and 5-year/unlimited-mile Corrosion (Perforation) Coverage — all with no deductible. Please ask your Ford Dealer for a copy of this limited warranty.

For more assurance: The 5-year/60,000-mile powertrain limited warranty is fully transferable, has no deductible, and provides you with an additional 2 years or 24,000 miles of coverage — on select components, including the engine and transmission — beyond the standard 3-year/36,000-mile Bumper-to-Bumper Coverage. Roadside Assistance is extended to 5 years or 60,000 miles, so you have the security of knowing that help may be only a phone call away should you run out of fuel, lock yourself out of the vehicle, or need towing. Your Ford Dealer can provide complete details on all of these advantages.



Get the ride you want. Whether you plan to lease or finance, you'll find the choices that are right for you at Ford Credit. Ask your Ford Dealer for details or check us out at fordcredit.com.



Get Ford Motor Company quality in your auto insurance. Our program offers industry-leading benefits and competitive rates. Call 1-877-367-3847, or visit us at fordvip.com for a no-obligation quote. Insurance offered by American Road Services Company (in CA, American Road Insurance Agency), a licensed agency and subsidiary of Ford Motor Company.



For a purchase or lease, the Ford **Extended Service Plan (ESP)** gives you "Peace-of-Mind" protection designed to cover key vehicle components and protect you from the cost of unexpected repairs. Ask your dealer for an ESP, the only service contract backed exclusively by Ford and honored at all Ford Lincoln Mercury dealerships.



Genuine Ford Accessories are designed and engineered specifically for Ford vehicles. Visit our website at fordaccessoriesstore.com to use the Accessorizer, and to learn about complete accessory details and purchase instructions.