

FUSION+HYBRID



2010



Specifications

[fordvehicles.com](http://fordvehicles.com)

# Specs



## DIMENSIONS & CAPACITIES

| Exterior                  |        |
|---------------------------|--------|
| Wheelbase                 | 107.4" |
| Length                    | 190.6" |
| Height                    | 56.9"  |
| Width – Excluding mirrors | 72.2"  |
| Width – Including mirrors | 80.1"  |

| Interior      |                          |
|---------------|--------------------------|
|               | <b>front/rear</b>        |
| Head room     | 38.7"/37.8"              |
| Shoulder room | 57.4"/56.5"              |
| Hip room      | 54.0"/53.3"              |
| Leg room      | 42.3"/37.1" <sup>1</sup> |

| Capacities                      |                             |
|---------------------------------|-----------------------------|
|                                 | <b>Fusion/Fusion Hybrid</b> |
| Passenger volume (cu. ft.)      | 100.3/99.8                  |
| Luggage capacity (cu. ft.)      | 16.5/11.8                   |
| Total interior volume (cu. ft.) | 116.8/111.6                 |
| Fuel capacity (gal.)            |                             |
| FWD                             | 17.5                        |
| AWD                             | 16.5                        |

## HORSEPOWER, TORQUE AND 2010 EPA-ESTIMATED FUEL ECONOMY

| 2.5L Duratec® I-4 engine    |                     |
|-----------------------------|---------------------|
| Horsepower                  | 175 @ 6000 rpm      |
| Torque (lb.-ft.)            | 172 @ 4500 rpm      |
| 6-speed automatic (S)       | 23 mpg city/34 hwy. |
| 6-speed manual (S)          | 22 mpg city/31 hwy. |
| 6-speed automatic (SE, SEL) | 22 mpg city/31 hwy. |
| 6-speed manual (SE)         | 22 mpg city/29 hwy. |

| 3.0L Duratec V6 FFV engine <sup>2</sup>     |                     |
|---|---------------------|
| Horsepower                                  | 240 @ 6550 rpm      |
| Torque (lb.-ft.)                            | 223 @ 4300 rpm      |
| 6-speed SelectShift Automatic <sup>TM</sup> |                     |
| FWD (SE, SEL)                               | 18 mpg city/27 hwy. |
| AWD (SEL)                                   | 18 mpg city/25 hwy. |

| 3.5L Duratec V6 engine        |                     |
|-------------------------------|---------------------|
| Horsepower                    | 263 @ 6250 rpm      |
| Torque (lb.-ft.)              | 249 @ 4500 rpm      |
| 6-speed SelectShift Automatic |                     |
| FWD (Sport)                   | 18 mpg city/27 hwy. |
| AWD (Sport)                   | 17 mpg city/24 hwy. |

| 2.5L iVCT Atkinson-cycle I-4 engine with Permanent-Magnet AC-synchronous electric motor |                     |
|---|---------------------|
| Net horsepower  | 191                 |
| Electronically controlled Continuously Variable Transmission (eCVT)                     | 41 mpg city/36 hwy. |

## STANDARD

| Mechanical  |  |
|---|--|
| Front-wheel drive (FWD)   |  |
| 4-wheel disc Anti-lock Brake System (ABS)                       |  |
| Power rack-and-pinion steering                                  |  |
| Stabilizer bars – 24-mm front and 16-mm rear (17-mm rear on V6) |  |
| Suspension – Front: independent Short- and Long-Arm             |  |
| Suspension – Rear: multilink independent                        |  |

| Safety & Security  |  |
|--|--|
| Personal Safety System <sup>TM</sup> for driver and front passenger includes dual-stage front airbags <sup>3</sup> safety belt pretensioners, safety belt energy-management retractors, safety belt usage sensors, driver-seat position sensor, crash severity sensor, restraint control module and Front-Passenger Sensing System |  |
| Front-seat side airbags <sup>3</sup>   |  |
| 2-row side-curtain airbags <sup>3</sup>  |  |
| 3-point safety belts for all seating positions   |  |
| AdvanceTrac <sup>®</sup> electronic stability control <sup>4</sup> with Brake Actuated Traction Control  |  |
| Anti-theft perimeter alarm   |  |
| Battery saver  |  |
| Belt-Minder <sup>®</sup> front safety belt reminder  |  |
| Child-safety rear door locks   |  |
| Emergency in-trunk release   |  |
| Illuminated entry  |  |
| LATCH – Lower anchors and tether anchors for child-safety seats  |  |
| Remote keyless entry with integrated keyhead transmitters (2)  |  |
| SecuriLock <sup>®</sup> passive anti-theft ignition system   |  |
| Side-intrusion door beams  |  |
| SOS Post-Crash Alert System <sup>TM5</sup>   |  |
| Tire Pressure Monitoring System (excludes spare)   |  |

| Seating  |  |
|--|--|
| 2-way manual front-passenger seat  |  |
| 5-passenger seating  |  |
| 60/40 split-folding spring-assisted rear seat (non-hybrid only)            |  |
| Rear-seat fold-down center armrest with beverage holders (non-hybrid only) |  |

| Interior  |  |
|---|--|
| 6 beverage holders (4 in Hybrid)  |  |
| 12-volt power points (2)  |  |
| Accessory delay for power features                                      |  |
| Auxiliary audio input jack in center console                            |  |
| Cabin air filtration system   |  |
| Dual sliding sun visors with mirrors                                    |  |
| Full center console with armrest and two-tiered storage                 |  |
| Grocery bag hooks in trunk  |  |
| In-dash storage compartment   |  |
| Message center with trip computer                                       |  |
| Overhead console with dome and map lights (not available with moonroof) |  |
| Power door locks  |  |
| Power trunk release   |  |
| Power windows with one-touch-up/-down driver-window feature             |  |
| Tilt/telescoping steering column  |  |

| Exterior                                    |  |
|---|--|
| Bright-chrome 3-bar grille                  |  |
| Easy Fuel <sup>TM</sup> capless fuel filler |  |
| Power sideview mirrors                      |  |
| Quad-beam halogen headlamps                 |  |
| Solar-tinted glass                          |  |
| Speed-sensitive windshield wipers           |  |

**New Vehicle Limited Warranty.** We want your Ford Fusion or Fusion Hybrid ownership experience to be the best it can be. So under this warranty, your new vehicle comes with 3-year/36,000-mile Bumper-to-Bumper Coverage, 5-year/60,000-mile Powertrain Warranty Coverage, 5-year/50,000-mile Safety Restraint Coverage, and 5-year/unlimited-mile Corrosion (Perforation) Coverage – all with no deductible. Fusion Hybrid is also covered by an 8-year/100,000-mile Hybrid Limited Warranty.<sup>6</sup> Please ask your Ford Dealer for copies of these limited warranties.

**Roadside Assistance.** Covers your vehicle for 5 years or 60,000 miles, so you have the security of knowing that help may be only a phone call away should you run out of fuel, lock yourself out of the vehicle, or need towing. Your Ford Dealer can provide complete details on all of these advantages.

**Ford Credit.** Get the ride you want. Whether you plan to lease or finance, you'll find the choices that are right for you at Ford Credit. Ask your Ford Dealer for details or check us out at [fordcredit.com](http://fordcredit.com).

**Ford Extended Service Plan.** For a purchase or lease, the Ford Extended Service Plan (ESP) gives you "Peace-of-Mind" protection designed to cover key vehicle components and protect you from the cost of unexpected repairs. Ask your dealer for a Ford ESP, the only service contract backed exclusively by Ford and honored at all Ford Lincoln Mercury dealerships.

**Insurance Services.** Get Ford Motor Company quality in your auto insurance. Our program offers industry-leading benefits and competitive rates. Call 1-877-367-3847, or visit us at [fordvip.com](http://fordvip.com) for a no-obligation quote. Insurance offered by American Road Services Company (in CA, American Road Insurance Agency), a licensed agency and subsidiary of Ford Motor Company.

Comparisons based on 2009 competitive models (Midsize Sedan class), publicly available information and Ford certification data at time of release. Some features discussed may be optional. Vehicles shown may contain optional equipment. Features shown may be offered only in combination with other options or subject to additional ordering requirements or limitations. Dimensions shown may vary due to optional features and/or production variability. Following release of this PDF, certain changes in standard equipment, options and the like, or product delays may have occurred which would not be included in these pages. Your Ford Dealer is the best source for up-to-date information. Ford Division reserves the right to change product specifications at any time without incurring obligations.

Sony is a registered trademark of Sony Corporation.  
Dolby and Pro Logic are registered trademarks of Dolby Laboratories.

© 2009 Ford Motor Company

10FUSJ2WEBPDFSPEC

<sup>1</sup>36.7" on Fusion Hybrid.

<sup>2</sup>Fuel economy when operating on E85 will yield different values than gasoline. See *Fuel Economy Guide* for more information.

<sup>3</sup>Always wear your safety belt and secure children in the rear seat.

<sup>4</sup>Remember that even advanced technology cannot overcome the laws of physics. It's always possible to lose control of a vehicle due to inappropriate driver input for the conditions.

<sup>5</sup>SOS hardware may become damaged or the battery may lose power in a crash, which could prevent operation.

<sup>6</sup>Not all crashes will activate an airbag or safety belt pretensioner.

<sup>7</sup>10-year/150,000-mile Hybrid Battery Limited Warranty in California, Connecticut, Maine, Massachusetts, New Jersey, New York, Rhode Island and Vermont. See dealer for details.

# Specs



## FUSION S

Equipped with all standard features, plus:

### Rapid Spec 100A

- 2.5L DOHC Duratec® I-4 engine
- 6-speed manual transmission
- 16" 5-spoke painted-aluminum wheels
- P205/60R16 all-season tires
- 4-way manual driver seat
- Single-zone manual air conditioning
- AM/FM stereo/single-CD player with MP3 capability and 4 speakers
- Manual day/night rearview mirror
- Single exhaust

### Available Option

- 6-speed automatic transmission
- Front and rear carpeted floor mats



## FUSION SE

Equipped with all standard S features, plus:

### Rapid Spec 200A

- 17" 5-spoke-design steel wheels with silver-painted covers
- P225/50R17 all-season tires
- 6-way power driver seat with manual lumbar
- Fold-flat front-passenger seat
- Front and rear carpeted floor mats
- Driver and front-passenger seatback map pockets
- Dual sliding sun visors with illuminated mirrors
- AM/FM stereo/single-CD player with MP3 capability and 6 speakers
- SIRIUS® Satellite Radio<sup>1</sup> with 6-month subscription
- Single exhaust with dual chrome tips
- Body-color, power sideview mirrors
- Bright bellline
- Fog lamps

### Available Option Groups

**Appearance Package:** 18" machined-aluminum wheels with painted pockets, P225/45R18 V-rated performance tires, sport-tuned suspension, chrome fog lamp bezels, rear decklid spoiler, Charcoal Black interior, leather-wrapped steering wheel and shift knob, unique finish on center stack, and unique cloth seats and door-trim inserts

**Monochrome Appearance Package:** same content as **Appearance Package** + body-color grille

**Rapid Spec 201A:** Ford SYNC® voice-activated communications and entertainment system<sup>2</sup> and auto-dimming rearview mirror with microphone and compass

**Rapid Spec 202A: Sun & SYNC Package – Power** tilt-and-slide moonroof, auto-dimming rearview mirror with microphone and compass, and Ford SYNC

### Available Options

- 3.0L V6 FFV engine with 6-speed SelectShift Automatic™ transmission
- 6-speed automatic transmission (2.5L I-4)
- Rear spoiler
- Reverse Sensing System
- White Platinum Metallic Tri-Coat paint



## FUSION SEL

Equipped with all standard SE features, plus:

### Rapid Spec 300A

- 6-speed automatic transmission
- 17" 5-spoke machined-aluminum wheels
- P225/50R17 V-rated all-season tires
- 8-way power driver seat
- 6-way power front-passenger seat
- Leather-trimmed seats
- Heated front seats
- Dual sliding sun visors with illuminated mirrors
- Ambient Lighting
- Auto-dimming rearview mirror with microphone and compass
- Dual-zone Electronic Automatic Temperature Control
- Steering wheel-mounted cruise and audio controls
- Ford SYNC voice-activated communications and entertainment system
- Automatic headlamps
- SecuriCode™ keyless-entry keypad
- Body-color, power, heated sideview mirrors with security approach lamps

### Available Option Groups

**Appearance Package** (with leather-trimmed seats)

**Monochrome Appearance Package** (with leather-trimmed seats)

**Rapid Spec 301A: Moon & Tune Package – Power** tilt-and-slide moonroof, and Sony® Audio System with DAEP 5.1 Surround Sound, AM/FM stereo/6-disc in-dash CD changer, MP3 capability, 12 speakers and 390 watts

**Rapid Spec 302A: Moon & Tune Package + Driver's Vision Package – BLIS®** (Blind Spot Information System) with Cross Traffic Alert and Rear View Camera + Reverse Sensing System

### Available Options

- 3.0L V6 FFV engine with 6-speed SelectShift Automatic transmission
- All-Wheel Drive (3.0L V6 only)
- Hard drive-based, voice-activated Navigation System featuring SIRIUS Travel Link™<sup>3</sup> (with complimentary 6-month subscription) and nearly 10 gigabytes of digital storage for pictures and music; includes Sony Audio System with DAEP 5.1 Surround Sound, AM/FM stereo/single-CD/DVD, MP3 capability, 12 speakers and 390 watts<sup>4</sup>
- Premium front and rear floor mats
- Rear spoiler
- Reverse Sensing System
- White Platinum Metallic Tri-Coat paint



## FUSION SPORT

Equipped with all standard SE features, plus:

### Rapid Spec 400A

- 3.5L V6 engine with 6-speed SelectShift Automatic transmission
- 18" 5-spoke painted-aluminum wheels
- P225/45R18 V-rated all-season tires
- 8-way power driver seat
- Auto-dimming rearview mirror with compass and microphone
- Ford SYNC voice-activated communications and entertainment system
- Leather-trimmed seats available with either Charcoal Black, Red or Blue seat and door-trim inserts
- Leather-wrapped steering wheel
- Steering wheel-mounted cruise and audio controls
- Unique appliques on center stack and dash available in Slate, Red or Blue
- Chrome-accented exterior trim
- Dual chrome exhaust tips
- Rear spoiler
- Side rocker moldings
- Sport-tuned suspension

### Available Option Groups

**Rapid Spec 401A: Moon & Tune Package**

**Rapid Spec 402A: Moon & Tune Package + Electronics Package – BLIS** (Blind Spot Information System) with Cross Traffic Alert, Rear View Camera, 6-way power passenger seat, heated front seats, Dual-zone Electronic Automatic Temperature Control, Ambient Lighting, automatic headlamps, heated sideview mirrors with security approach lamps, and SecuriCode keyless-entry keypad + Reverse Sensing System

### Available Options

- All-Wheel Drive (AWD)
- Hard drive-based, voice-activated Navigation System featuring SIRIUS Travel Link (with complimentary 6-month subscription) and nearly 10 gigabytes of digital storage for pictures and music; includes Sony Audio System with DAEP 5.1 Surround Sound, AM/FM stereo/single-CD/DVD, MP3 capability, 12 speakers and 390 watts<sup>5</sup>
- Premium front and rear floor mats
- Reverse Sensing System



## FUSION HYBRID

Equipped with all standard I-4 SEL features, plus:

### Rapid Spec 500A

- 2.5L iVCT I-4 Atkinson-cycle engine with Permanent-Magnet AC-synchronous electric motor
- Electronically controlled Continuously Variable Transmission (eCVT)
- 275-volt sealed nickel-metal-hydride (NiMH) battery
- 17" 15-spoke painted-aluminum wheels
- P225/50R17 V-rated all-season tires
- 110-volt power point
- SmartGauge™ with EcoGuide instrument cluster with 2 configurable LCD screens and message center
- AM/FM stereo/6-disc in-dash CD changer, MP3 capability and 6 speakers
- Driver knee airbag<sup>6</sup>
- Fixed rear seat
- Eco-friendly cloth seating
- Regenerative Braking System
- Reverse Sensing System

### Available Option Groups

**Rapid Spec 501A: Moon & Tune Package + Driver's Vision Package**

**Rapid Spec 502A: Moon & Tune Package + Driver's Vision Package + Leather-trimmed seats** with heated front seats + Hard drive-based, voice-activated Navigation System featuring SIRIUS Travel Link (with complimentary 6-month subscription) and nearly 10 gigabytes of digital storage for pictures and music; includes Sony Audio System with DAEP 5.1 Surround Sound, AM/FM stereo/single-CD/DVD, MP3 capability, 12 speakers and 390 watts

### Available Options

- Hard drive-based, voice-activated Navigation System featuring SIRIUS Travel Link (with complimentary 6-month subscription) and nearly 10 gigabytes of digital storage for pictures and music; includes Sony Audio System with DAEP 5.1 Surround Sound, AM/FM stereo/single-CD/DVD, MP3 capability, 12 speakers and 390 watts<sup>4</sup>
- Leather-trimmed seats with heated front seats<sup>4</sup>
- Premium front and rear floor mats
- White Platinum Metallic Tri-Coat paint

<sup>1</sup>Service available in the 48 contiguous states and Washington, D.C. SIRIUS is a registered trademark of SIRIUS XM Radio Inc. Subscriptions governed by SIRIUS Terms and Conditions at sirius.com/serviceterms.

<sup>2</sup>Driving while distracted can result in loss of vehicle control. Only use mobile phones and other devices, even with voice commands, when it is safe to do so.

<sup>3</sup>Real-time traffic monitoring available in select markets.

Some features are unavailable while driving. Service available in the 48 contiguous states and Washington, D.C.

<sup>4</sup>Requires Rapid Spec 302A.

<sup>5</sup>Requires Rapid Spec 402A.

<sup>6</sup>Always wear your safety belt and secure children in the rear seat.

## Specifications



# Exterior COLORS



Sangria Red Metallic



Sport Blue Metallic



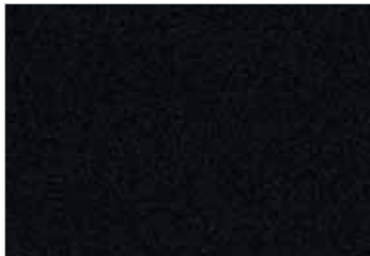
Sterling Grey Metallic



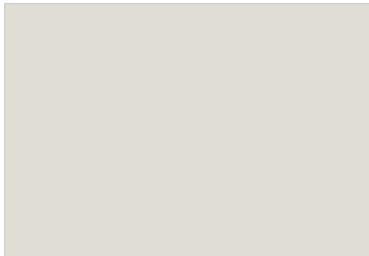
Smokestone Metallic



Light Ice Blue Metallic



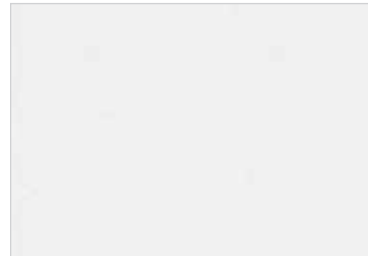
Tuxedo Black Metallic



White Suede



Atlantis Green Metallic



White Platinum Metallic Tri-Coat



Brilliant Silver Metallic

|                           | Interior Colors |
|---------------------------|-----------------|
| S                         |                 |
| Sangria Red Metallic      | ●               |
| Smokestone Metallic       | ●               |
| Tuxedo Black Metallic     | ●               |
| White Suede               | ●               |
| Brilliant Silver Metallic | ●               |

|   | Interior Colors |
|---|-----------------|
| SE  |                 |
| Sangria Red Metallic                          | ● ● ●           |
| Sport Blue Metallic                           | ● ● ●           |
| Sterling Grey Metallic                        | ● ● ●           |
| Smokestone Metallic                           | ● ● ●           |
| Tuxedo Black Metallic                         | ● ● ●           |
| White Suede                                   | ● ● ●           |
| Atlantis Green Metallic                       | ● ● ●           |
| White Platinum Metallic Tri-Coat <sup>1</sup> | ● ● ●           |
| Brilliant Silver Metallic                     | ● ● ●           |

|   | Interior Colors |
|---|-----------------|
| SEL   |                 |
| Sangria Red Metallic                          | ● ● ● ●         |
| Sport Blue Metallic                           | ● ● ● ●         |
| Sterling Grey Metallic                        | ● ● ● ●         |
| Smokestone Metallic                           | ● ● ● ●         |
| Tuxedo Black Metallic                         | ● ● ● ●         |
| White Suede                                   | ● ● ● ●         |
| Atlantis Green Metallic                       | ● ● ● ●         |
| White Platinum Metallic Tri-Coat <sup>1</sup> | ● ● ● ●         |
| Brilliant Silver Metallic                     | ● ● ● ●         |

|   | Interior Colors |
|---|-----------------|
| Sport   |                 |
| Sangria Red Metallic                          | ● ●             |
| Sport Blue Metallic                           | ● ●             |
| Tuxedo Black Metallic                         | ● ●             |
| Atlantis Green Metallic                       | ● ●             |
| Brilliant Silver Metallic                     | ● ●             |
| Hybrid  |                 |
| Sterling Grey Metallic                        | ● ●             |
| Light Ice Blue Metallic                       | ● ●             |
| Tuxedo Black Metallic                         | ● ●             |
| Atlantis Green Metallic                       | ● ●             |
| White Platinum Metallic Tri-Coat <sup>1</sup> | ● ●             |
| Brilliant Silver Metallic                     | ● ●             |

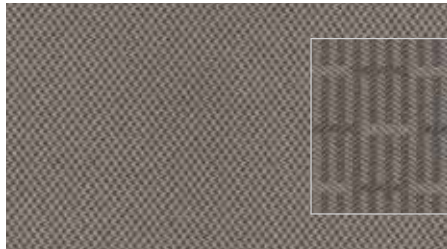
**INTERIORS:** ● Medium Light Stone ● Charcoal Black  
 ● Camel ● Appearance Packages ● Sport Red  
 ● Sport Blue

<sup>1</sup>Extra-cost option.

Colors shown are representative only. Not all colors are available on all models. See your dealer for actual paint/trim options.

## Specifications

# Interior COLORS



Cloth – Medium Light Stone with Medium Light Stone inserts  
Standard on S and SE



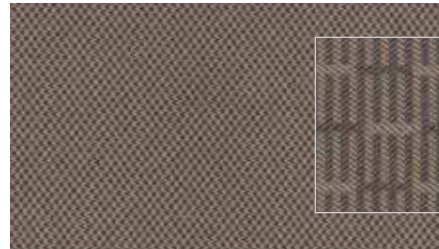
Brushed-Aluminum  
accents



Cloth – Charcoal Black with Charcoal Black inserts  
Standard on SE



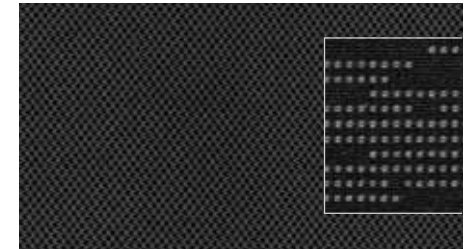
Brushed-Aluminum  
accents



Cloth – Camel with Camel inserts  
Standard on SE



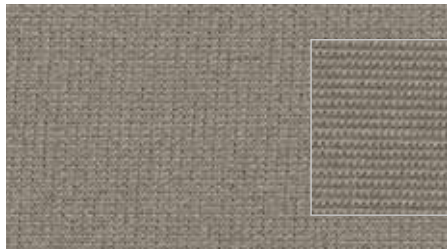
Brushed-Aluminum  
accents



Cloth – Charcoal Black with Charcoal Black inserts  
Appearance Packages on SE



Square Dot accents



Cloth – Medium Light Stone with Medium Light Stone inserts  
Standard on Hybrid



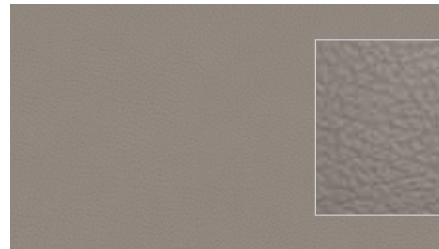
Silver Carbon Weave accents



Cloth – Charcoal Black with Charcoal Black inserts  
Standard on Hybrid



Silver Carbon Weave accents



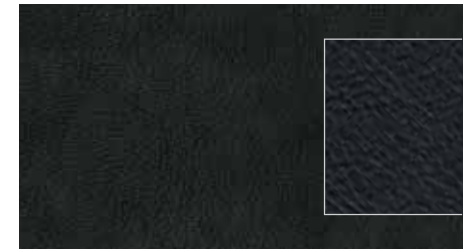
Leather – Medium Light Stone with Medium Light Stone inserts  
Standard on SEL, Available on Hybrid



Black Carbon Weave accents  
SEL



Silver Carbon Weave accents  
Hybrid



Leather – Charcoal Black with Charcoal Black inserts  
Standard on SEL, Available on Hybrid



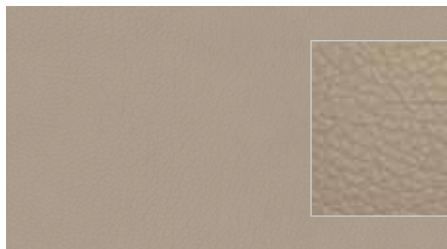
Black Carbon Weave accents  
SEL



Square Dot accents  
Appearance Packages on SEL



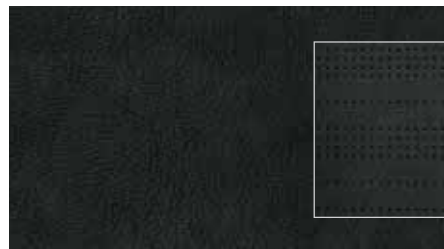
Silver Carbon Weave accents  
Hybrid



Leather – Camel with Camel inserts  
Standard on SEL



Woodgrain accents



Leather – Charcoal Black with Charcoal Black perforated inserts  
Standard on Sport



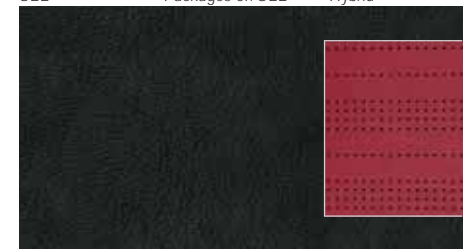
Polished Slate accents



Leather – Charcoal Black with Sport Blue perforated inserts  
Standard on Sport



Blue Racer accents



Leather – Charcoal Black with Sport Red perforated inserts  
Standard on Sport



Cherry Red accents

# Wheels

16" 5-Spoke Painted-Aluminum  
Standard on S



17" 5-Spoke-Design Steel with Silver-Painted Cover  
Standard on SE



17" 5-Spoke Machined-Aluminum  
Standard on SEL



18" Machined-Aluminum  
with Painted Pockets  
Appearance Packages on SE and SEL



18" 5-Spoke Painted-Aluminum  
Standard on Sport



17" 15-Spoke Painted-Aluminum  
Standard on Hybrid