



ASTON MARTIN

Vantage

CONTENTS

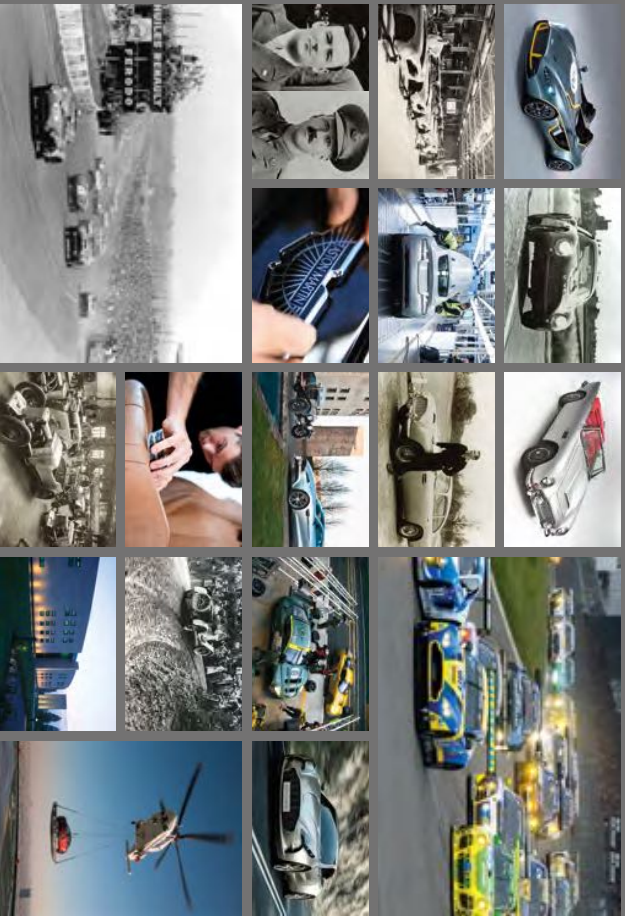
2	CENTENARY
6	THE VANTAGE RANGE
14	COMPETITIVE ANCESTRY
18	DESIGN
28	V8 VANTAGE
40	V8 VANTAGE S
50	V12 VANTAGE S
68	V12 S OPTIONS
70	V8 AND V8 S OPTIONS
72	SPECIFICATIONS
76	ASTON MARTIN LIFE
80	IMPORTANT NOTICE



“The Vantage is a modern sports car with classic ideals. Potent, charismatic and blessed with inimitable style and exceptional athleticism, the revitalised Vantage range is the fastest and fittest ever.

Whether you’re drawn to the poise and purity of the V8 or the unprecedented pace of the new V12 S, you’re assured an electrifying driving experience and a car that captures the true essence of Aston Martin.”

Dr. Ulrich Bez, Chief Executive Officer



1913 - 2013

CELEBRATING 100 YEARS OF POWER, BEAUTY AND SOUL

Aston Martin has produced exclusive, hand-crafted sports cars of distinction for more than a century. From the 1913 Le Mans race to the DB5, we have possessed a special blend of style, performance and craftsmanship that sets them apart from all others. As icons of style and speed our cars have become woven into the fabric of popular culture and motor racing history, thanks to scene-stealing appearances in the James Bond 007 movies, and superb performances in legendary races such as the Le Mans

24-hours. It's this success and rich diversity of influences that give Aston Martin its unique combination of charisma, style and raw speed.

Throughout this time, the Vantage name has become synonymous with performance and style. It's a name that has inspired the best of automotive designers. You will find these compelling qualities have been further amplified in the latest Vantage range, without compromising the inherent usability that makes these fabulous cars so irresistible.

ESSENCE OF
A SPORTS CAR



THE VANTAGE RANGE



V8



420 BHP
470 Nm

180 MPH
4.7 SECONDS



V8 S



430 BHP
490 Nm

190 MPH
4.6 SECONDS



V12 S

COUPÉ

ROADSTER

565 BHP
620 Nm

205 MPH
3.7 SECONDS

PRETTY CLEVER

Beauty and brains have always been a bewitching combination, which is why the V8 Vantage possesses an undiminished ability to seduce, seduce and seduce. It's the latest technology, the

Vantage is an intelligent blend of art and engineering. Indeed the only thing more memorable than the lithe sculptural bodywork is the measured driving experience.

RAZOR SHARP

Born of Aston Martin's love of racing and the engineering advances forged in the crucible of competition, both V8 S and V12 S are the most powerful GT4 race programme. Increased

power and torque and focused dynamics, together with subtle external detailing and a subtle steering wheel, are all the most exciting features of the Aston Martin in the range.

ABSOLUTE POWER

For outright firepower the V12 S reigns supreme. The realisation of a new V12 engine, with one of the most powerful and agile sports car with epic V12 power.

What began as a one-of concept, and then overcame apparently insurmountable challenges to reach the engineering challenges has now made an exhilarating evolutionary step.



V8 VANTAGE

ENDURING. ICON

An inimitable design packed with innovative engineering and plentiful performance, the V8 Vantage is dynamic, yet offers exhilarating everyday usability. Handsome, charismatic and hugely desirable, the V8 Vantage in both Coupe and Roadster forms is Aston Martin at its most irresistible.

V8 VANTAGE S

ADRENALIN RUSH

The V8 Vantage S is the ultimate expression of our V8 range. Both Coupe and Roadster versions are available. The V8 engine is available with a six-speed manual transmission or an optional

close-ratio seven-speed Sportshift II transmission. Rousing performance, race-bred aerodynamics, ultra-rapid acceleration and a carbon-fibre chassis combine to enhance the inherent brilliance of the Vantage design.





V12 VANTAGE S

MAGNIFICENT MAVERICK

Created for the most ardent thrill-seekers, the new V12 Vantage S has taken a potent recipe and turned up the heat. It's the most powerful sports car ever, and it's the most powerful sports car ever. It takes the Vantage to a whole new level of performance and excitement. Aston Martin ever.

Its scintillating new engine and seven-speed sports shift transmission use explosive performance with a 2015 engine (328 hp) to speed it to the fastest series production Aston Martin ever.

COMPETITIVE ANCESTRY



Motorsport has been a driving force behind Aston Martin's engineering from the beginning. Indeed the very name of the company has its origins in motor sport. Our founder –

Lionel Martin – combined his own name with that of the Aston Clinton hill climb to create an automotive brand that is proudly rooted in racing.



We have been in the thick of the action ever since, an outright win at Le Mans in 1959 and GT1 class wins in 2007 and 2008 placing us at the very pinnacle of sports car racing.

We continue to fight for victories to this day, our determination to excel injecting vibrancy, integrity and authenticity to our road cars. Just as it always will.

RACING STOCK

At Aston Martin we believe there is no better way of demonstrating the innate prowess of our road cars than racing them. And that's why you will find Aston Martin Race cars competing in the toughest and most prestigious races motorsport has to offer. Whether it is the World Endurance Championship, including the Le Mans 24-hours, Nürburgring

'N24', American Le Mans Series, or one of the numerous national and international GT championships, we continue to make use of our history. Crucially we also use the lessons learned to make our road cars even more capable. Put simply, when we win, you win.



INIMITABLE DESIGN, UNIQUE CHARACTER

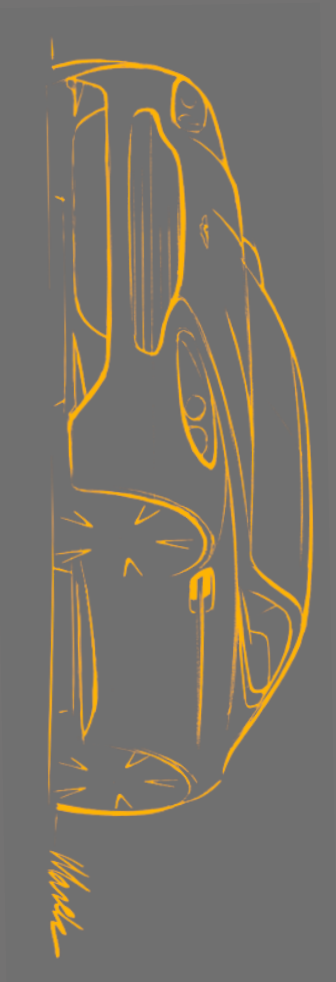
Widely acknowledged to be one of the all-time great pieces of car design, the Vantage has effortlessly become a benchmark for design. Its sculptural form exerts the power to stop you in your tracks, while its confident lack of embellishment provides an enduring lesson in proportion and immaculate surfacing.

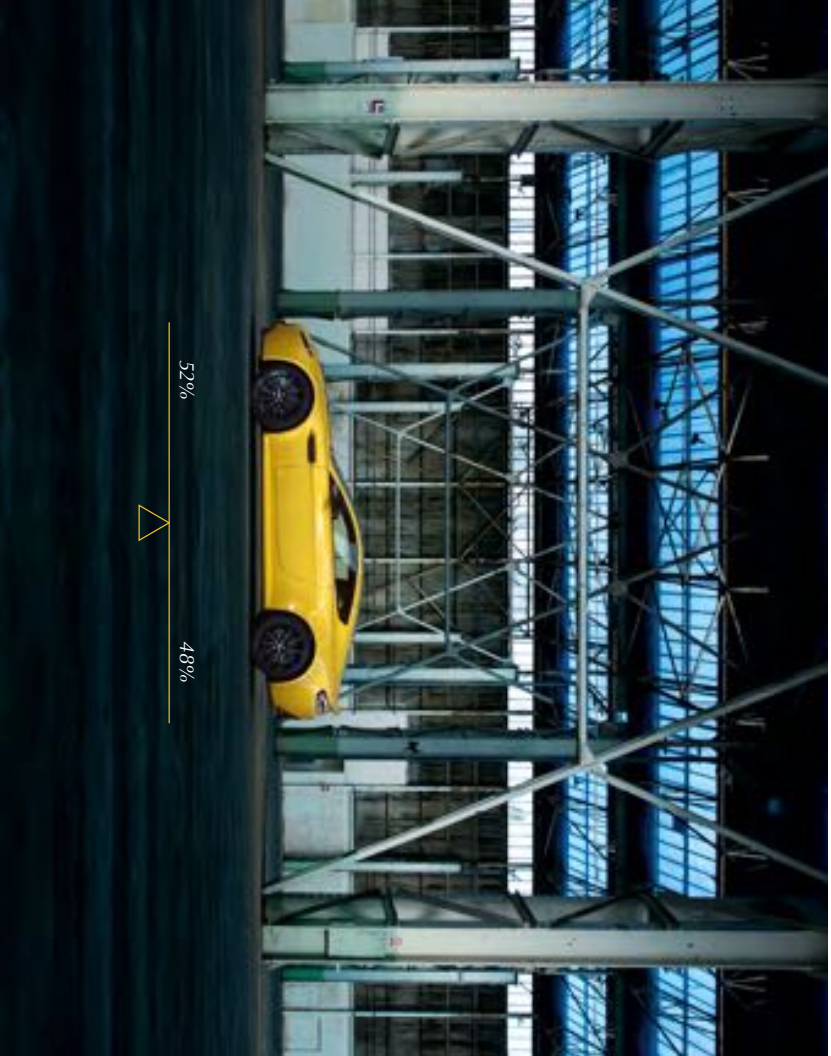
Whether in Coupe or Roadster form, the Vantage has a precise visual cohesion that mirrors the engineering excellence of its chassis, with minimal overhangs

and a foursquare stance. It looks resolutely planted to the road, while the skin-tight tailoring – the sleek roofline, the tuck-in rear deck, the low profile – emphasises its athletic physique.

In keeping with Aston Martin's long-standing tradition, the subtle visual differences that distinguish the Coupe models are driven by functional needs. All Vantage models feature aerodynamic refinements from our Vantage GT4 – the most aggressive of the range – a deeper and more aggressive

front splitter, more prominent side sills, a rear diffuser and a tallgate rear spoiler. The V12 S also gets a unique Carbon-Fibre radiator grille and bonnet louvers that together create an appropriately purposeful look for the flagship of the range.





PERFECTLY BALANCED

The product of brilliant minds, innovative engineering and an exhaustive development programme, the new Volvo Vantage is a driver's car in the truest sense of the word. Built around our acclaimed RFT (reinforced front end) chassis model, the Vantage adheres to an uncompromising engineering philosophy. Both V8 and V12 engines set us far back in the class in terms of power and torque, response and handling agility. Its aluminium structure itself follows principles, and employs technologies, prevalent in the aerospace industry for an impressive balance of strength and lightness.

To achieve optimal weight distribution the gearbox is mounted at the rear in the form of a transaxle. Not only does this ensure a balanced chassis, it also maximises traction for greater stability and user-friendly performance.

Our development and durability testing is amongst the most exhaustive and rigorous in the industry. By pushing every component to the limit – and beyond – in exercises by driving thousands of laps at test circuits like the legendary Nürburgring Nordschleife, we know our cars are supremely fit for purpose.



DRIVING AMBITION

Just as we have made great efforts to hone, refine and enhance the driving experience, so we have perfect driving environment. From the moment you open the elegantly upswipe/swanwing door and settle into the driver's seat you know the Vantage is as special to be in as it is to look at.

You will love the low seating position and the resulting sense of connection and intimacy you have with the car. You will love the precision of the view through the crisp, wide-screen and the precision with which you

can thread the Vantage along a challenging road. Nothing gets in the way of your enjoyment.

Like the exterior, the interior is superbly stylish and beautifully crafted. Bold lines and confident simplicity ensure the details of the interior are as well thought out as all the exterior appointments are equally well served, while the quality of the materials and craftsmanship is unmatched and of all, no matter how many journeys you make, the Vantage will never factor never fails.



LABOUR OF LOVE



Supple, hand-stitched and immaculately tailored leather, metal that is cool to the touch, sculptural lines that draw your gaze. Timeless style, flawless craftsmanship and the finest materials are all combined to create an interior by Vanarge Intero: a feast for the senses.



ATTENTION TO DETAIL

We are obsessive about detail. This perfectionism pervades the Vantage, from the initial design and engineering phase to the choice of materials and the way we assemble the car. No matter how we will enhance it, whether that requires cutting edge technology or traditional craft skills. It's this exacting approach that defines what we do, and makes every Aston Martin a truly special car.



V8 VANTAGE

Unmistakable style, unforgettable performance. The perfect introduction to the Aston Martin range.

Award winning looks, standard-setting dynamics and pulse quickening desirability make the V8 Vantage the most desirable sports car in the world. Its hand-craftsmanship, it has the same inherent quality and integrity as all

our cars. And with a choice of Coupe and Roadster body styles, manual or automated paddle-shift gearbox, 5.9 litre V8 engine, 180 bhp and 190 mph top speed, it offers a scope for personalisation hours a version to perfectly suit your individual taste and driving style.



MAGIC IN EVERY MILE

*Designed to face the demands of the real world,
the V8 Vantage takes the road in its stride.*

Those qualities that come to the fore on a great driving road also remain true in everyday situations. Compact dimensions and great agility allow you to drive in urban and country

environments with equal confidence and finesse, while the luxurious and comprehensively appointed interior provides seating security from the stresses of long journeys.





IMPECCABLE POISE

*Understated style and enviable self-assurance
ensure the V8 Vantage exudes effortless charisma.*

We believe confidence comes from within. That's why our designers work so hard to achieve a rare degree of visual restraint. Or, more simply put, we know that the magnetic attraction of an Aston

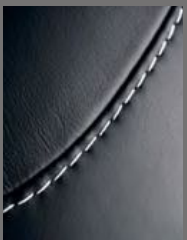
Martin means you will never pass unnoticed, but thanks to its inherent class and cultured exhaust note, you can be sure the Vantage will never fail to leave the right impression.



DREAM DRIVE



We know that for many of you a Vantage is the realisation of a long held dream. That is why our designers and craftsmen have worked tirelessly to ensure its interior has the same breathtaking level of detail and an unparalleled sense of occasion found in every Aston Martin.



PERFECT ALL-ROUNDER

The V8 Vanage might be classed as the baby of the range, but all things are relative. In the case of the Vanage range this baby conceals a fabulous front-end-mounted 4.7 litre V8 engine. Developing 420 BHP and 470 Nm torque, the V8 Vanage can accelerate from a standstill to 60 mph in just 4.7 seconds, and achieve a possible maximum speed of 180 mph (290 km/h).

Equipped with a six-speed manual transmission as standard, the V8 Vanage can also be had with the optional seven-speed Sportshift II automated manual paddle-operated transmission. Delivering a 10% increase in top speed, the Sportshift II allows you to remove your hands from the steering wheel. Sportshift II adds another dimension of control and enjoyment, while a full of city driving.

POWER

420

BHP

SPEED

180

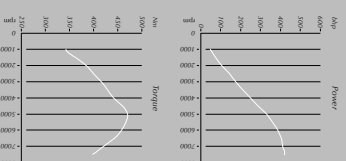
MPH
(290 KM/H)



TORQUE

470

Nm



V8 VANTAGE S

Honed to deliver an intense experience on the road using knowledge gained from the track.

The V8 Vantage S is the highest performing and most driver-focused V8-engined model in the range. Yet with generous equipment lists and a range of optional extras, it comes with a number of enticing propositions for everyday use.





SEDUCTIVE FORM,
SPORTING FUNCTION

*Shrink-wrapped in a suit of aluminium,
the V8 Vantage S has the look of an athlete.*

With a physique toned and shaped
by lessons learned in racing, the
punch of its form is matched only
by the car's tenacious spirit.
Whether you are still a novice
or a seasoned driver, the V8 Vantage S is your perfect partner.
It's an exhilarating sports car for
the true connoisseur.



SCULPTED BY SPEED

The V8 S is distinguished from the regular V8 by exposed Carbon-fibre detailing, including the stability-enhancing front splitter and dramatic rear diffuser. The V8 S also has a racing and signature to perfectly match its sharpened looks and performance.





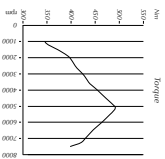
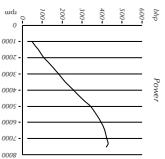
SUMPTUOUS STYLE

By combining time-honoured traditional craftsmanship with striking contemporary design themes, the interior of the M8 S makes a truly sporting statement. With its use of premium leather and artful application of contrast stitching, the cockpit abounds with eye-catching flourishes.



**ENHANCED
DYNAMICS,
INCREASED
INTENSITY**

As its name suggests, the V8 Vantage S builds on the impeccable engineering and vibrant performance of the regular V8. The 4.7-liter engine has been enhanced to develop an extra 10 bhp and 20 Nm of torque.



POWER

430
BHP

SPEED

190
MPH

(305 KM/H)

0-60 MPH

4.6
SECONDS

(0-100 KM/H - 4.8 SECONDS)

V12 VANTAGE S

The V12 Vantage S is an uncompromising masterpiece built to satisfy the most demanding driver.

By mating our latest and most powerful V12 engine to a new seven-speed SportsShift, 111, automatic transmission, we've created a Vantage of unprecedented ferocity. With a new three-stage Adaptive Damping System (ADS), updated

Carbon Ceramic Matrix disc brakes, quick-response power steering with 100-millisecond level of assistance and a new 100-millisecond response and behaviour, it's unashamedly optimised for on-limit driving.





NATURAL BORN THRILLER

Every element of the V12 Vantage S has been carefully matched to ensure it is the ultimate in performance and capability.

This harmony can be found in the steering and suspension has been perfectly matched to ensure stability and control and ABS system has been perfectly in tune with the car's heightened responses.





DRIVING IN ITS PUREST FORM

Created for those who revel in the satisfying pursuit of challenge and reward, the V12 Vantage S is a driver's car in the truest sense of the word. It's a car that's uncompromisingly powerful, yet crucially not demanding. In this

charismatic sports car will seduce you with its performance and immerse you in the absorbing thrill of driving an immensely powerful rear-wheel drive sports car.



EXTREME SPORTS

A thoroughbred sports car with a racer's edge, the V12 Vantage S demands respect.

In return it delivers unmatched safety action. On the road this means huge reserves of performance, high reserves of grip, high reserves of fuel economy and high reserves of refinement. Multi-stage traction, stability and anti-lock systems to maintain a high yet non-intrusive safety margin.

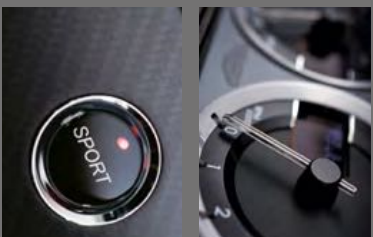
On a racetrack you can fully exploit all 565 bhp, 573 TPs and 620 Nm and experience the intense, uncensored Vantage S. One of the most powerful cars in our 100-year history.



LOOKS TO THRILL

The V12 Vanage S features a bold new exterior design that has been optimized on a number of points. The grille is based to optimize the car's aerodynamic balance and increase cooling airflow to the engine. All exterior brightwork can be specified in a purposeful black finish. Additional highlights include optional black or Silver motorsport-inspired Graphics schemes emphasize its extreme character.





NOBLE SAVAGE

Like its exterior, the V12 Vanage S boasts an interior stocked with the finest materials. The choice is yours: leather or Alcantara® and lightweight* – and a choice of Lussini leather or Alcantara® and a dynamic range of panel, stitch and stripe designs for the seats and door panels.

*Lightweight seats are not available in all markets.

**BOUNDLESS
POWER,
MONUMENTAL
PERFORMANCE**

There has never been
an Aston Martin quite
like the V12 Vantage S

Indeed, we are proud to say its top speed of 205 mph makes it the fastest series production model in our 100-year history. The key to this performance is the combination of our latest performance 6.0-litre V12 engine and seven-speed Sportshift III automated manual transmission.

As well as the increase in peak power and torque, performance is further boosted by a more generous spread of torque across a wider rev range. These gains – as much as 70 Nm at 1000 rpm – deliver tremendous low and mid-range muscle and explosive acceleration, and a more powerful and responsive throttle. The perfectly spaced ratios of the paddle-shift gearbox. Performance comes no more vivid than this.

UNPRECEDENTED POWER

565
BHP

OUR FASTEST PRODUCTION MODEL

205
MPH

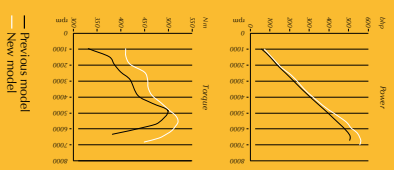
(328 KM/H)



0-60 MPH

3.7
SECONDS

THE QUICKEST VANTAGE EVER



— Previous model
— New model

V12 S OPTIONS

EXTERIOR

				
				
				
1 19" 10-spoke forged alloy Graphic painted wheels with diamond-turned finish (standard)	2 19" 10-spoke forged alloy Liquid Silver painted wheels	3 19" 10-spoke forged alloy Gloss Black painted wheels with diamond-turned finish	4 19" 10-spoke lightweight alloy Silver painted wheels	5 19" 10-spoke lightweight alloy Satin Black painted wheels
6 Exterior Carbon-fibre Back comprising mirror caps, side strake and lamp inlets (side strake illustrated)	7 Painted Carbon-fibre grille with Black meshes	8 Black side window trim surround	9 Silver headlamp bezels	10 Black textured tailpipe finisher
Coloured Brake Calipers				
1 Grey 2 Red 3 Yellow				

INTERIOR

	
	
1 Carbon-Fibre paddle shifts	2 Black pedals
3 Bang & Olufsen infotainment system	
Personalised sill plaques	
	

V8 & V8 S OPTIONS

EXTERIOR

			
1	2	3	4
			
5	6	7	8

1 19\"
wheels with diamond-turned finish (standard)

2 19\"
wheels with diamond-turned finish

3 19\"
wheels with Silver diamond-turned finish

4 19\"
wheels with diamond-turned finish

5 Magnum Silver bonnet and side strake meshes

6 Bright-finish grille

7 Carbon-Fibre front splitter

8 Carbon-Fibre rear diffuser

Coloured Brake Calipers

1 Black
2 Red
3 Silver
4 Yellow

INTERIOR

	
1	2

1 Lightweight seats with six-way electrical adjustment
*Strength seats are not available in all markets.

2 Bang & Olufsen infotainment system

Personalised sill plaques



SPECIFICATIONS

V8 VANTAGE

Body	Two-seat, two-door Coupe - soft-cover convertible top - body style - V8 body structure - Aluminium, magnesium alloy, composite and steel body - side-impact front door - main beam - night intensity, D-lighting - LED rear lamps	Steering	Rack and pinion, power-assisted steering, 2.62 turns - lock-to-lock - V-Hi reach - Steering rack with 15:1 ratio	Standard specification	- Full-grain leather interior - Piano Black fascia trim and lock-to-lock - Graphite centre console finish - Electrically adjustable sports seats with side airbags - Dual-stage driver/passenger front-impact extender head - Heated rear screen - Ambient temperature control - Organic Electrochromic (OEC) displays - Trip computer - Satellite navigation (USA and Canada only) - Bluetooth® telephone preparation (USA and Canada only) - Rear parking sensors (USA and Canada only) - Alarm and immobiliser - Remote control central door locking and boot release - Aston Martin Tracking by Cobra (UK only) ² - LED map reading lights
Engine	All-alloy, quad overhead, 4753 cc V8 - Front mid-mounted engine, re-voled drive shafts and exhaust system with catalytic bypass valves - Compression ratio 11.3:1 - Max power: 230 kW (312.0 hp) @ 2800 rpm - Max torque: 470 Nm (346 lb-ft) at 5000 rpm - 0-100 km/h in 4.7 seconds - Maximum speed 290 km/h (180 mph)	Wheels & Tyres	- Spoked alloy - Silver-spoked wheels with diamond-turned finish - Front: 8.5J x 19" Bridgestone Potenza RE950 285/35 ZR19 - Rear: 9.5J x 19" Bridgestone Potenza RE950 285/35 ZR19	Interior options	- Sport shift ¹ seven-speed automatic transmission system with SSC-CD connector ³ - 160 W Aston Martin audio system with SSC-CD autochanger - Apple iPod ⁴ connector ⁵
Suspension	Front: Independent double wishbone with anti-dive geometry, coil springs, anti-roll bar and non-rubbe dampers - Rear: Ventilated and grooved disc brakes with four-piston monobloc non-rubbe dampers - Max torque: 470 Nm (346 lb-ft) at 5000 rpm - 0-100 km/h in 4.7 seconds - Maximum speed 290 km/h (180 mph)	Brakes	- 19" V-spoke cast alloy Graphite painted wheels - Graphite painted wheels with diamond-turned finish - 19" 10-spoke forged alloy Silver diamond-turned finish - Silver diamond-turned finish - Alternative brake caliper (Inch: Black, Red)	Exterior options	- Sport shift ¹ seven-speed automatic transmission system with SSC-CD connector ³ - 160 W Aston Martin audio system with SSC-CD autochanger - Apple iPod ⁴ connector ⁵
Transmission	7-speed manual transmission - Limited-slip differential - Final-drive ratio 3.09:1	Weight & Capacity	- US8 connector with Western Audio Format (WAF) and MFC (M3) and MFC (M3) audio file compatibility - 19" V-spoke cast alloy Graphite painted wheels - Graphite painted wheels with diamond-turned finish - 19" 10-spoke forged alloy Silver diamond-turned finish - Silver diamond-turned finish - Alternative brake caliper (Inch: Black, Red)	Interior options	- Sport shift ¹ seven-speed automatic transmission system with SSC-CD connector ³ - 160 W Aston Martin audio system with SSC-CD autochanger - Apple iPod ⁴ connector ⁵
Dimensions	Length: 4885 mm (172.6') Width: 1865 mm (73.4') Height: 1270 mm (49.9') Wheelbase: 2600 mm (102.4') Front track: 1570 mm (62.6') Rear track: 1570 mm (62.6') Turning circle: 11.38 m (37.3') (to 10 km/h)	Dimensions	- US8 connector with Western Audio Format (WAF) and MFC (M3) and MFC (M3) audio file compatibility - 19" V-spoke cast alloy Graphite painted wheels - Graphite painted wheels with diamond-turned finish - 19" 10-spoke forged alloy Silver diamond-turned finish - Silver diamond-turned finish - Alternative brake caliper (Inch: Black, Red)	Interior options	- Sport shift ¹ seven-speed automatic transmission system with SSC-CD connector ³ - 160 W Aston Martin audio system with SSC-CD autochanger - Apple iPod ⁴ connector ⁵
Dimensions	Length: 4885 mm (172.6') Width: 1865 mm (73.4') Height: 1270 mm (49.9') Wheelbase: 2600 mm (102.4') Front track: 1570 mm (62.6') Rear track: 1570 mm (62.6') Turning circle: 11.38 m (37.3') (to 10 km/h)	Dimensions	- US8 connector with Western Audio Format (WAF) and MFC (M3) and MFC (M3) audio file compatibility - 19" V-spoke cast alloy Graphite painted wheels - Graphite painted wheels with diamond-turned finish - 19" 10-spoke forged alloy Silver diamond-turned finish - Silver diamond-turned finish - Alternative brake caliper (Inch: Black, Red)	Interior options	- Sport shift ¹ seven-speed automatic transmission system with SSC-CD connector ³ - 160 W Aston Martin audio system with SSC-CD autochanger - Apple iPod ⁴ connector ⁵

V8 VANTAGES

Body	Two-seat, two-door Coupe - soft-cover convertible top - body style - V8 body structure - Aluminium, magnesium alloy, composite and steel body - side-impact front door - main beam - night intensity, D-lighting - LED rear lamps	Steering	Rack and pinion, power-assisted steering, 2.62 turns - lock-to-lock - V-Hi reach - Steering rack with 15:1 ratio	Standard specification	- Full-grain leather interior - Piano Black fascia trim and lock-to-lock - Graphite centre console finish - Electrically adjustable sports seats with side airbags - Dual-stage driver/passenger front-impact extender head - Heated rear screen - Ambient temperature control - Organic Electrochromic (OEC) displays - Trip computer - Satellite navigation (USA and Canada only) - Bluetooth® telephone preparation (USA and Canada only) - Rear parking sensors (USA and Canada only) - Alarm and immobiliser - Remote control central door locking and boot release - Aston Martin Tracking by Cobra (UK only) ² - LED map reading lights
Engine	All-alloy, quad overhead, 4753 cc V8 - Front mid-mounted engine, re-voled drive shafts and exhaust system with catalytic bypass valves - Compression ratio 11.3:1 - Max power: 231 kW (313.0 hp) @ 2800 rpm - Max torque: 470 Nm (346 lb-ft) at 5000 rpm - 0-100 km/h in 4.6 seconds - Maximum speed 305 km/h (190 mph)	Wheels & Tyres	- Spoked alloy - Silver-spoked wheels with diamond-turned finish - Front: 8.5J x 19" Bridgestone Potenza RE950 285/35 ZR19 - Rear: 9.5J x 19" Bridgestone Potenza RE950 285/35 ZR19	Interior options	- Sport shift ¹ seven-speed automatic transmission system with SSC-CD connector ³ - 160 W Aston Martin audio system with SSC-CD autochanger - Apple iPod ⁴ connector ⁵
Suspension	Front: Independent double wishbone with anti-dive geometry, coil springs, anti-roll bar and non-rubbe dampers - Rear: Ventilated and grooved disc brakes with four-piston monobloc non-rubbe dampers - Max torque: 470 Nm (346 lb-ft) at 5000 rpm - 0-100 km/h in 4.6 seconds - Maximum speed 305 km/h (190 mph)	Weight & Capacity	- 19" V-spoke cast alloy Graphite painted wheels - Graphite painted wheels with diamond-turned finish - 19" 10-spoke forged alloy Silver diamond-turned finish - Silver diamond-turned finish - Alternative brake caliper (Inch: Black, Red)	Exterior options	- Sport shift ¹ seven-speed automatic transmission system with SSC-CD connector ³ - 160 W Aston Martin audio system with SSC-CD autochanger - Apple iPod ⁴ connector ⁵
Transmission	7-speed manual transmission - Limited-slip differential - Final-drive ratio 3.09:1	Dimensions	- US8 connector with Western Audio Format (WAF) and MFC (M3) and MFC (M3) audio file compatibility - 19" V-spoke cast alloy Graphite painted wheels - Graphite painted wheels with diamond-turned finish - 19" 10-spoke forged alloy Silver diamond-turned finish - Silver diamond-turned finish - Alternative brake caliper (Inch: Black, Red)	Interior options	- Sport shift ¹ seven-speed automatic transmission system with SSC-CD connector ³ - 160 W Aston Martin audio system with SSC-CD autochanger - Apple iPod ⁴ connector ⁵
Dimensions	Length: 4885 mm (172.6') Width: 1865 mm (73.4') Height: 1270 mm (49.9') Wheelbase: 2600 mm (102.4') Front track: 1570 mm (62.6') Rear track: 1570 mm (62.6') Turning circle: 11.38 m (37.3') (to 10 km/h)	Dimensions	- US8 connector with Western Audio Format (WAF) and MFC (M3) and MFC (M3) audio file compatibility - 19" V-spoke cast alloy Graphite painted wheels - Graphite painted wheels with diamond-turned finish - 19" 10-spoke forged alloy Silver diamond-turned finish - Silver diamond-turned finish - Alternative brake caliper (Inch: Black, Red)	Interior options	- Sport shift ¹ seven-speed automatic transmission system with SSC-CD connector ³ - 160 W Aston Martin audio system with SSC-CD autochanger - Apple iPod ⁴ connector ⁵
Dimensions	Length: 4885 mm (172.6') Width: 1865 mm (73.4') Height: 1270 mm (49.9') Wheelbase: 2600 mm (102.4') Front track: 1570 mm (62.6') Rear track: 1570 mm (62.6') Turning circle: 11.38 m (37.3') (to 10 km/h)	Dimensions	- US8 connector with Western Audio Format (WAF) and MFC (M3) and MFC (M3) audio file compatibility - 19" V-spoke cast alloy Graphite painted wheels - Graphite painted wheels with diamond-turned finish - 19" 10-spoke forged alloy Silver diamond-turned finish - Silver diamond-turned finish - Alternative brake caliper (Inch: Black, Red)	Interior options	- Sport shift ¹ seven-speed automatic transmission system with SSC-CD connector ³ - 160 W Aston Martin audio system with SSC-CD autochanger - Apple iPod ⁴ connector ⁵

SPECIFICATIONS

V12 VANTAGE S

Body	<ul style="list-style-type: none"> Two-seat, two-door Coupe body style Extruded bonded aluminium Aluminium, magnesium alloy Extruded aluminium door composite and steel body Hydro-protected headlights (main beam) High Intensity Discharge LED lamps, dipped beam Clear rear lamps with a black border Carbon fibre front splitter Black headlight bezels¹ 	<ul style="list-style-type: none"> Black brake Calipers Dynamic Stability Control (DSC) with roll-over protection (ABS) with Track mode Electronic Brakeforce Distribution (EBD) Assist (EBN) Traction Control (TC) Hydraulic Brake Assist (HBA) Positive Torque Control (PTC) Hill Start Assist (HSA)
Steering	<ul style="list-style-type: none"> Rack and pinion, speed-sensitive Servotronic power-steering system with 2.5 Tunes Column tilt and reach adjustment Steering rack with 13:1 ratio 	
Wheels & tyres	<ul style="list-style-type: none"> 19" 10-spoke forged alloy Graphite painted wheels with diamond turned mesh Cross 255/35 ZR19 Rear 11 x 19" Pirelli P Zero Corsa 255/30 ZR19 	
Suspension	<ul style="list-style-type: none"> Front: Independent double wishbones, Intercoiling springs, anti-dive and anti-squat geometry, coil over dampers Rear: Independent double wishbones with anti-squat and anti-tilt geometry, monobloc adaptive dampers Three-stage Adaptive Dampers System (ADS) Throttle "Sport" and "Track" modes 	<ul style="list-style-type: none"> Memory seats and exterior Dual 4-speaker driver/passenger front albeys Carbon fibre front grille and aluminium front grille and hood Powered exterior heated mirrors Heated rear screen Organic ElectroLuminescent (OEL) displays 10" infotainment computer Bluetooth[®] telephone preparation Satellite navigation¹ Front and rear panoramic view mirror² Auto-dimming interior rearview mirror with glare reduction (USA and Canada only)
Transmission	<ul style="list-style-type: none"> Rear mid-mounted, seven-speed Sportshift III³ automatic manual transmission 	
Brakes	<ul style="list-style-type: none"> Front: Ventilated carbon disc brakes, 330 mm diameter, with 6 pistons Rear: Ventilated Carbon disc brakes, 306 mm diameter, with 4 pistons monobloc calipers 	
Interior	<ul style="list-style-type: none"> Rear parking sensors Arm with voltmeter and Remote control central door locking and hood release Class ECU fuse Asion Martin Tracking by Cobra UK only⁴ LED map reading lights 	<ul style="list-style-type: none"> Black side window trim surround Black textured multiple finishes Rear parking assist camera Silver headlamp bezels V12 front wing badging Asion Martin Tracking by Cobra UK only⁴ Driver protective sgs
In-car entertainment	<ul style="list-style-type: none"> 160 W Asion Martin audio system with Sirius CD autochanger⁵ Integrated Apple iPod⁶ and USB connector with Western Audio Format (WMA), Windows Media Center (WMC) and MP3 (MP3) audio file compatibility 	<ul style="list-style-type: none"> Interior Carbon Fibre pack comprising: <ul style="list-style-type: none"> Carbon fibre paddle shifts Black pedal pads and footrest Carbon fibre steering wheel electrical adjustment⁷, 360 mm Heated seats⁸ Passenger seat with ISOFIX Leatherweight carpet 700 W Asion Martin Premium Audio System with 1000 W Bang & Olufsen Beosound audio system with "E-power" technology (USA and Canada only) Change door opener Second glass ECU (Europe only) Second glass ECU tracking by Cobra USA⁹ Personalised sill plaques First and last name engraving lighter Rear-mounted umbrella Leather ECU pouch
Interior options	<ul style="list-style-type: none"> Pack comprising: <ul style="list-style-type: none"> Carbon fibre paddle shifts Black pedal pads and footrest Carbon fibre steering wheel electrical adjustment⁷, 360 mm Heated seats⁸ Passenger seat with ISOFIX Leatherweight carpet 700 W Asion Martin Premium Audio System with 1000 W Bang & Olufsen Beosound audio system with "E-power" technology (USA and Canada only) Change door opener Second glass ECU (Europe only) Second glass ECU tracking by Cobra USA⁹ Personalised sill plaques First and last name engraving lighter Rear-mounted umbrella Leather ECU pouch 	
Interior options	<ul style="list-style-type: none"> Pack comprising: <ul style="list-style-type: none"> Carbon fibre paddle shifts Black pedal pads and footrest Carbon fibre steering wheel electrical adjustment⁷, 360 mm Heated seats⁸ Passenger seat with ISOFIX Leatherweight carpet 700 W Asion Martin Premium Audio System with 1000 W Bang & Olufsen Beosound audio system with "E-power" technology (USA and Canada only) Change door opener Second glass ECU (Europe only) Second glass ECU tracking by Cobra USA⁹ Personalised sill plaques First and last name engraving lighter Rear-mounted umbrella Leather ECU pouch 	
Dimensions	<ul style="list-style-type: none"> Length 4385 mm (172.67' excluding mirrors Width 1865 mm (73.44' including mirrors Height 1260 mm (49.27' without roof rack) Wheelbase 2460 mm (102.41') Front track 1572 mm (62.07') Rear track 1572 mm (62.07') Turning circle 11.8 m (38.7 ft, hard to knob) Boot capacity 300 litres Fuel capacity 80 litres (176 UK gal/211 US gal) Kerb weight 1665 kg 	
Fuel consumption litres/100 km (mpg)	<ul style="list-style-type: none"> Urban 25.5 (12.6) Extra-urban 10.2 (22.7) Combined 14.7 (15.2) 	
Gas mileage	<ul style="list-style-type: none"> Premium TBC 	
CO₂ emissions	<ul style="list-style-type: none"> 343 g/km 	

1. Not available in all markets.
 2. Not available with lightweight seats.
 3. Passenger seating on car switch.
 4. Complete with UK tax and VED.
 5. iPod is a trademark of Apple Inc.
 6. iPod is a trademark of Apple Inc.
 7. Only available in the USA and other countries.
 8. Carbon fibre heated seats available in USA.
 9. Sportshift trademark is used under licence from Porsche of Stuttgart, Ltd.





**GENUINE PASSION.
ASSURED PROFESSIONALISM.
UNEQUALLED SERVICE.**

With 148 dealerships in 42 countries, Aston Martin has a global presence to match its reputation as maker of some of the world's most coveted sports cars. Our showrooms and service centres reflect the prestige and exclusivity associated with the Aston Martin brand, ensuring your ownership experience begins as soon as you enter the highly ornate, staffed by attentive highly trained sales and service specialists. From expert guidance through the process to the unique post-sale care, your Aston Martin is maintained by skilled specialists, our dealerships are at your disposal.

One of the most valuable services our dealerships provide is helping you create an Aston Martin that's a true reflection of your own taste and personality. With a wide range of finishes, from classic slivers, greys and bronzes to contemporary reds, blues, greens and yellows, your Vantage can be as subtle or eye-catching as you wish. Whatever colour of the finest you desire, our paint and lacquer in a process that takes more than 50 man-hours. The interior is also finished on

In addition to advising you on your colour and trim choices, our expert salespeople will explain our new bespoke service, Q by Aston Martin, which allows you to customise your car through the available accessories and options, including luxury luggage and protective car covers and inform you of the latest Aston Martin customer driving events held around the world throughout the year. From track days at the legendary Nürburgring to luxurious culinary and cultural driving tours of some of the world's most appealing destinations.

SPORTS CARS TO SAVOUR

Pure of form and rich in character, every Vantage delivers on the promise of the Aston Martin name.

From the sublime V8 and sublime V12 to the awesome V12 S flagship, the Aston Martin Vantage range boasts unsurpassed performance, character and breadth of appeal.

Beautiful and practical, thrilling and exhilarating, whichever Vantage you choose will rekindle your love of driving and take every journey into a living memory.



IMPORTANT NOTICE

Pictures and word mark

The cars illustrated in this brochure may include additional options not featured in this brochure or that are only available at extra cost.

Updates

Aston Martin Lagonda Limited is constantly seeking ways to improve the specification, design and production of its cars and alterations take place continually. Whilst every effort is made to produce up-to-date literature about our evolving products, this brochure should not be regarded as a guide to any currently available products, options, accessories or specifications, nor does it constitute any offer for sale of any particular car, product, option, accessories and/or services or combination of the same.

This brochure is merely an indication of the kinds of Aston Martin products and services which may be available from time to time. The contents of this brochure represent Aston Martin Lagonda Limited's business as a whole. Text and photographs in this brochure may relate to specifications, options, accessories and/or services that are not available for sale in some countries or which have been superseded or are otherwise no longer available. Images shown may not be reflective of the final car.

Performance results

Because Vantage V12 S is not yet in production, gas mileage data are not yet available in final form. Any figures quoted are Aston Martin's estimates and as soon as type approval is issued the gas mileage figures will be made available. Tyre choice may also impact on performance results, fuel consumption, CO2 emissions, ride comfort and handling.

Published figures should be used for comparison purposes only and verification should not be attempted on public roads. No guarantee is given expressed or implied of performance results, fuel consumption or CO2 emissions.

Aston Martin Lagonda Limited strongly urges that all speed laws be obeyed and that safety belts be worn at all times.

The weight of the car will influence the level of CO2 emitted and as a result, cars with higher levels of specification and factory fit options may emit higher levels of CO2. However, Vehicle Excise Duty is charged according to the weight of and CO2 emissions of the standard car, as published in this brochure.

All petrol engines are fitted with a catalytic converter.

Copyright and other intellectual property rights

This brochure and its contents are protected by various intellectual property rights, including without limitation, copyright, design rights and trademarks, that are owned or licensed by Aston Martin. You may not copy or use this brochure or any of its contents for any commercial purpose without our prior written consent.

Distributors and dealers

Distributors and dealers are not agents of Aston Martin Lagonda Limited and have absolutely no authority to bind Aston Martin Lagonda Limited by any express or implied undertaking or representation. Sales by dealers or agents are subject to their terms and conditions of sale.

Company details

Aston Martin Lagonda Limited (company number 01199255) has its registered office at Banbury Road, Gaydon, Warwickshire CV35 0DB, England.

Telephone +44(0)1926 644644
Facsimile +44(0)1926 644333
VAT Number 904 447 237

www.astonmartin.com

Part no: 705970

Design and production
Identity Ltd (London)

Photography
Max Farrey and Dominic Fraser



ASTON MARTIN

WWW.ASTONMARTIN.COM