

TECH, COLOUR AND TRIM



MASERATI

GHIBLI





MASERATI GHIBLI. EVERYDAY ENJOYMENT



The joys of driving a high performance, prestige saloon are no longer just for special occasions: the Maserati Ghibli is a unique combination of style, performance, sports handling and comfort that is designed to make inspirational motoring an everyday experience.

GHIBLI S

DIMENSIONS AND WEIGHTS

Length	4971 mm
Width (with side mirrors)	2100 mm
Width (without side mirrors)	1945 mm
Height	1461 mm
Wheelbase	2998 mm
Front track	1635 mm
Rear track	1653 mm
Front overhang	935 mm
Rear overhang	1038 mm
Turning circle	11.7 m
Boot capacity	500 l
Fuel tank capacity	80 l
Kerb weight	1810 kg

ENGINE

Number of cylinders and layout	V6 60°
Displacement	2979 cm ³
Transmission	Automatic 8 gears
Compression ratio	9.7:1
Max. power output	410 CV (301 kW)
Engine speed at max. power output	5500 rpm
Peak torque	550 Nm
Engine speed at peak torque	5000 rpm
Overboost Torque	550 Nm
Engine speed at overboost torque	1750 - 5000 rpm

PERFORMANCE

Maximum speed	285 km/h (177 mph)
0 to 100 km/h acceleration	5.0 s
Stopping distance 100 to 0 Km/h	36 m



GHIBLI S

GHIBLI S Q4

GHIBLI

GHIBLI DIESEL

	GHIBLI S	GHIBLI S Q4	GHIBLI	GHIBLI DIESEL
Fuel consumption - combined cycle (l/100km)	10.4 (27.1 mpg)	10.5 (26.9 mpg)	9.6 (29.4 mpg)	5.9 (47.8 mpg)
Fuel consumption - urban cycle (l/100km)	15.7 (18.0 mpg)	15.8 (17.8 mpg)	14.0 (20.1 mpg)	7.6 (37.1 mpg)
Fuel consumption - extra urban cycle (l/100km)	7.3 (38.7 mpg)	7.6 (37.1 mpg)	7.1 (39.7 mpg)	5.0 (56.5 mpg)
CO2 emissions - combined cycle (g/km)	242	246	223	158
CO2 emissions - urban cycle (g/km)	364	368	326	202
CO2 emissions - extra urban cycle (g/km)	171	176	165	133

GHIBLI S Q4

DIMENSIONS AND WEIGHTS

Length	4971 mm
Width (with side mirrors)	2100 mm
Width (without side mirrors)	1945 mm
Height	1461 mm
Wheelbase	2998 mm
Front track	1635 mm
Rear track	1653 mm
Front overhang	935 mm
Rear overhang	1038 mm
Turning circle	11.7 m
Boot capacity	500 l
Fuel tank capacity	80 l
Kerb weight	1870 kg

ENGINE

Number of cylinders and layout	V6 60°
Displacement	2979 cm ³
Transmission	Automatic 8 gears
Compression ratio	9.7:1
Max. power output	410 CV (301 kW)
Engine speed at max. power output	5500 rpm
Peak torque	550 Nm
Engine speed at peak torque	5000 rpm
Overboost Torque	550 Nm
Engine speed at overboost torque	1750 - 5000 rpm

PERFORMANCE

Maximum speed	284 km/h (176 mph)
0 to 100 km/h acceleration	4.8 s
Stopping distance 100 to 0 Km/h	36 m

GHIBLI

DIMENSIONS AND WEIGHTS

Length	4971 mm
Width (with side mirrors)	2100 mm
Width (without side mirrors)	1945 mm
Height	1461 mm
Wheelbase	2998 mm
Front track	1635 mm
Rear track	1653 mm
Front overhang	935 mm
Rear overhang	1038 mm
Turning circle	11.7 m
Boot capacity	500 l
Fuel tank capacity	80 l
Kerb weight	1810 kg

ENGINE

Number of cylinders and layout	V6 60°
Displacement	2979 cm ³
Transmission	Automatic 8 gears
Compression ratio	9.7:1
Max. power output	330 CV (243 kW)
Engine speed at max. power output	5000 rpm
Peak torque	500 Nm
Engine speed at peak torque	4500 rpm
Overboost Torque	500 Nm
Engine speed at overboost torque	1750 - 4500 rpm

PERFORMANCE

Maximum speed	263 km/h (163 mph)
0 to 100 km/h acceleration	5.6 s
Stopping distance 100 to 0 Km/h	36 m

GHIBLI DIESEL

DIMENSIONS AND WEIGHTS

Length	4971 mm
Width (with side mirrors)	2100 mm
Width (without side mirrors)	1945 mm
Height	1461 mm
Wheelbase	2998 mm
Front track	1635 mm
Rear track	1653 mm
Front overhang	935 mm
Rear overhang	1038 mm
Turning circle	11.7 m
Boot capacity	500 l
Fuel tank capacity	70 l
Kerb weight	1835 kg

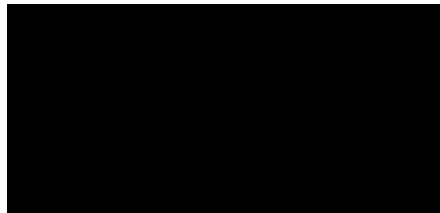
ENGINE

Number of cylinders and layout	V6 60°
Displacement	2987 cm ³
Transmission	Automatic 8 gears
Compression ratio	16.5:1
Max. power output	275 CV (202 kW)
Engine speed at max. power output	4000 rpm
Peak torque	600 Nm
Engine speed at peak torque	2000 - 2600 rpm

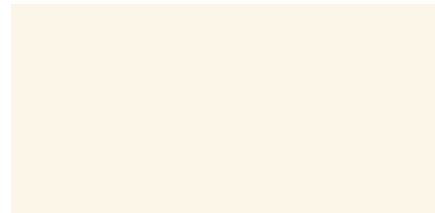
PERFORMANCE

Maximum speed	250 km/h (155 mph)
0 to 100 km/h acceleration	6.3 s
Stopping distance 100 to 0 Km/h	36 m

SOLID PAINTS



Nero

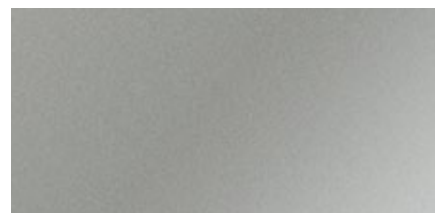


Bianco

METALLIC PAINTS



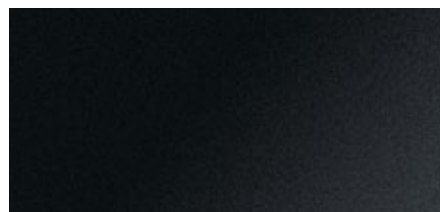
Grigio



Grigio Metallo



MICA PAINTS



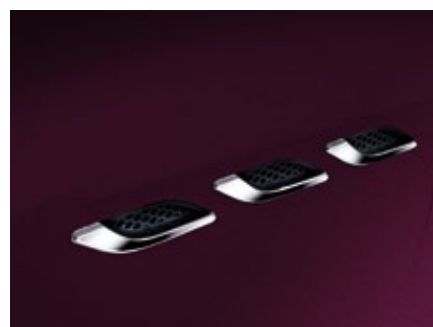
Nero Ribelle



Blu Emozione



Blu Passione



Rosso Folgore



METALLESCENT PAINTS



Bronzo Siena



Champagne

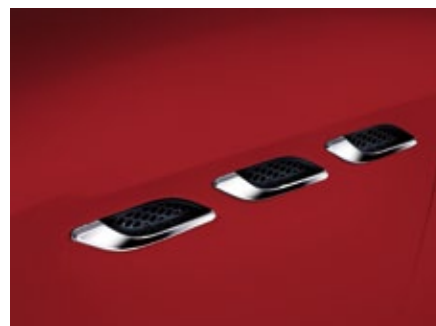


Grigio Maratea

PEARLESCENT

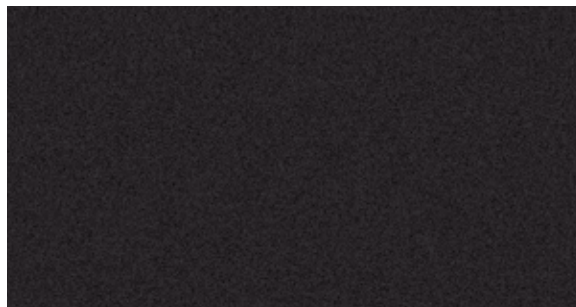


Bianco Alpi

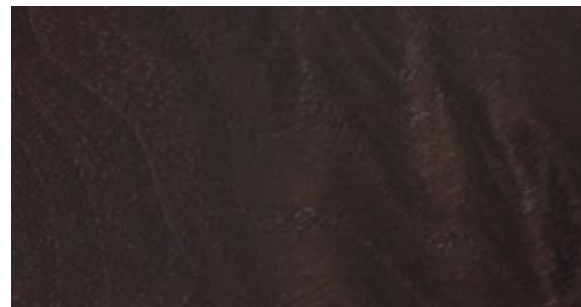


Rosso Energia

INTERIOR TRIM



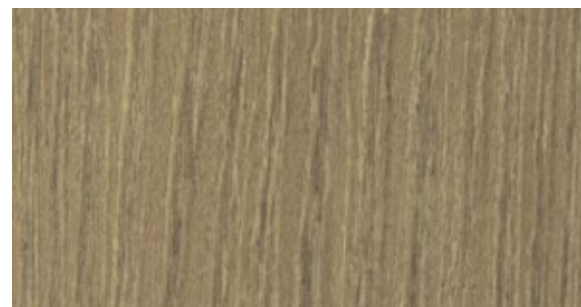
Dark Mirror



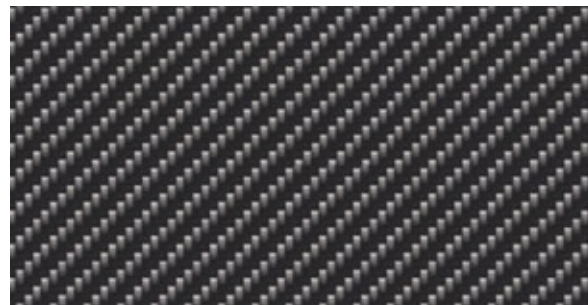
Radica



Ebano



Rovere chiaro



Carbonio

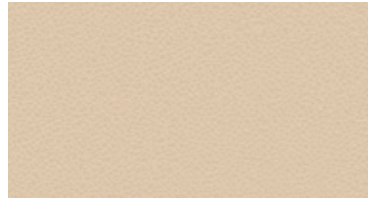
PREMIUM LEATHER COLORS: OPTIONAL



Nero



Cuoio



Sabbia



Marrone



Rosso

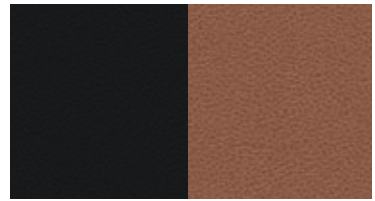


Blu

UPPER DASHBOARD



Nero



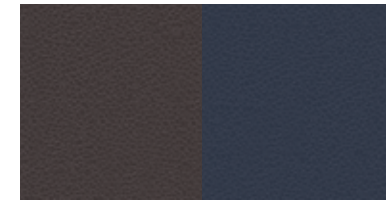
Nero / Cuoio



Marrone



Nero / Rosso

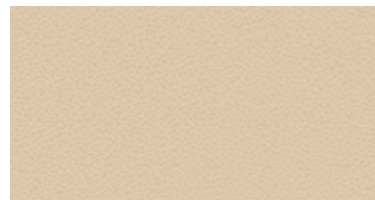


Marrone / Blu

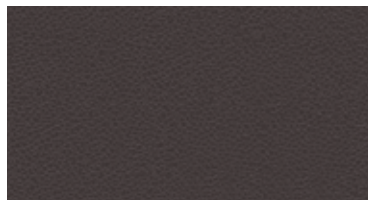
LOWER DASHBOARD / CARPET / SEAT BELTS



Nero



Sabbia



Marrone

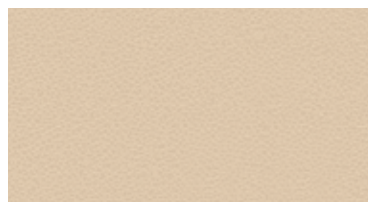




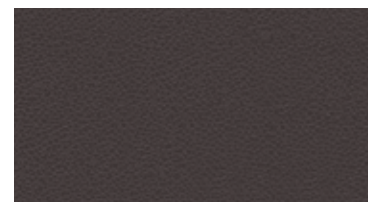
STEERING WHEEL



Nero



Sabbia

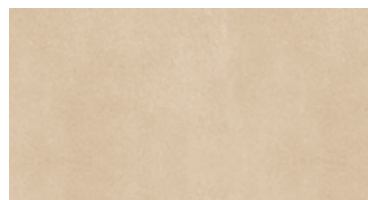


Marrone

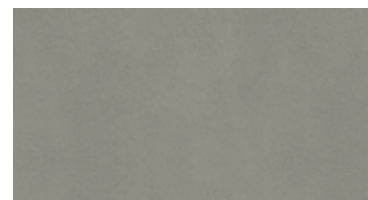
HEAD LINING



Nero



Sabbia



Grigio

Official Maserati Dealers will be glad to provide further details.

ALFIERI

Dimensions: 18"
 Finishing: Standard
 Front tire: 235/50 R 18
 Rear tire: 235/50 R 18



VULCANO

Dimensions: 18"
 Finishing: Machine polished
 Front tire: 235/50 R 18
 Rear tire: 275/45 R 18



POSEIDONE

Dimensions: 19"
 Finishing: Machine polished
 Front tire: 245/45 R 19
 Rear tire: 275/40 R 19



PROTEO

Dimensions: 19"
 Finishing: Machine polished
 Front tire: 245/45 R 19
 Rear tire: 275/40 R 19



URANO

Dimensions: 20"
 Finishing: Standard
 Front tire: 245/40 R 20
 Rear tire: 285/35 R 20



URANO

Dimensions: 20"
 Finishing: Machine polished
 Front tire: 245/40 R 20
 Rear tire: 285/35 R 20



TITANO

Forged
 Dimensions: 21"
 Finishing: Matt
 Front tire: 245/35 R 21
 Rear tire: 285/30 R 21









BLACK



RED



BLUE



SILVER

GHIBLI / EUROPEAN EQUIPMENT LIST

(Not valid for UK, Russia, Azerbaijan, Kazakhstan & Ukraine)



GHIBLI DIESEL

GHIBLI

GHIBLI S

GHIBLI S Q4

WHEELS & CHASSIS

» 18-inch Alfieri design alloy wheels (235/50 R18 front; 235/50 R18 rear)	●	●	-	-
» 18-inch Vulcano design alloy wheels (235/50 R18 front; 275/45 R18 rear)	-	-	●	●
» 19-inch Poseidone design alloy wheels (245/45 R19 front; 275/40 R19 rear)	○	○	○	○
» 19-inch Proteo design alloy wheels (245/45 R19 front; 275/40 R19 rear)	○ / P	○	○	○ / P
» 20-inch Urano design alloy wheels (245/40 R20 front; 285/35 R20 rear)	○ / P	○	○	○ / P
» 20-inch machine polished Urano design alloy wheels (245/40 R20 front; 285/35 R20 rear)	○ / P	○	○	○ / P
» 21-inch Titano design alloy wheels (245/35 R21 front; 285/30 R21 rear)	○ / P	○	○	○ / P
» 18-inch space saver spare wheel	○	○	○	○
» Brake callipers painted Black	-	-	●	●
» Brake callipers painted Red	-	-	○	○ / P
» Brake callipers painted Blue	-	-	○	○ / P
» Brake callipers painted Silver	-	-	○	○ / P
» Limited-slip differential	●	●	●	●
» ZF-8 speed automatic transmission; with tip up/down function from gear-knob and fully manual mode (activation by specific button)	●	●	●	●
» BRAKING SYSTEM: Front Brakes: 4 piston aluminium monobloc fixed callipers with ventilated discs (345x28mm) Rear Brakes: Floating callipers with ventilated discs (320x22mm)	●	●	-	-
» BRAKING SYSTEM: Front Brakes: 6 piston aluminium monobloc fixed callipers with dual-cast ventilated drilled discs (360x32mm) Rear Brakes: 4 piston aluminium monobloc fixed callipers ventilated discs (350x28mm)	-	-	●	●
» Power-assisted steering, with speed sensitive feature	●	●	●	●
» Sport suspension	P	-	-	P
» Skyhook - electronically variable active damping suspension system	○	○	○	○

SAFETY

» Bi-xenon front headlamps	●	●	-	-
» Bi-xenon front headlamps with Adaptive Front Lighting System (AFS), incl. Hi-Pressure front headlamps washing system	○ / P	○ / P	●	●
» Day Running Light (DRL)	●	●	●	●
» LED Taillamps and third stop light integrated into the rear window	●	●	●	●
» Automatic headlamp activation	●	●	●	●
» Air-bag system: dual stage front bags (driver and passenger), side bags, head bags	●	●	●	●
» Driver knee-bag	●	●	●	●
» Front seat belts with pre-tensioners and load limiters; rear seat belts with load limiters	●	●	●	●



GHIBLI DIESEL



GHIBLI



GHIBLI S



GHIBLI S Q4

» MSP - includes: maserati stability program (MSP) acceleration slip regulation (ASR) antilock braking system (ABS) electronic brake distribution (EBD) (MSR)	•	•	•	•
» I.C.E. control (Increased Control & Efficiency): specific software for the easiest vehicle dynamic management in all conditions and reduced consumptions	•	•	•	•
» BAS (Brake Assistance System)	•	•	•	•
» Hill holder	•	•	•	•
» Electronic Parking Brake (EPB)	•	•	•	•
» Tyre Pressure Monitoring System (TPMS) with pressure displayed on central digital cluster	•	•	•	•
» Tyre sealing compound and electric air compressor	•	•	•	•
» Active Cruise Control	•	•	•	•

EXTERIOR EQUIPMENT

» Solid paint	•	•	•	•
» Metallic paint	○	○	○	○
» Metallescent paint	○	○	○	○
» Mica paint	○	○	○	○
» Pearlescent Paint (Tricoat)	○	○	○	○
» Electric Sunroof, with tilt and slide functions	○	○	○	○
» Chromeline exterior trim	•	•	•	•
» Heated windshield nozzles	P	P	P	P
» Front & Rear parking sensors with graphic display on central digital cluster	P	P	P	P
» Rear view camera with imaging displayed on central MTC	P	P	P	P
» Automatically dimming interior mirror & Auto High Beam Assist	•	•	•	•
» Electrically adjustable, foldable and heated exterior mirrors with integrated LED turn lights	•	•	•	•
» Automatically dimming exterior mirrors with integrated LED turn lights	P	P	P	P
» Twin, dual pipe exhaust system in chrome-plated stainless steel	•	•	•	•
» Ghibli badge on rear trunk	•	•	•	•
» Q4 badge on rear trunk	-	-	-	•

• STANDARD





○ OPTIONAL

- NOT AVAILABLE

P OPTION AS PART OF A PACK

GHIBLI / EUROPEAN EQUIPMENT LIST

(Not valid for UK, Russia, Azerbaijan, Kazakhstan & Ukraine)

				
	GHIBLI DIESEL	GHIBLI	GHIBLI S	GHIBLI S Q4
» Fabric headlining	●	●	●	●
» Alcantara® headlining	○	○	○	○
» Leather interior upholstery for seats	●	●	●	●
» Poltrona Frau® extended leather interior upholstery for instrument cowl, individual upper dashboard sections and door armrests	○ / P	○	○	○ / P
» Poltrona Frau® fine grain extended leather interior upholstery for seats, upper and lower dashboard, armrests, upper and central door panels	○ / P	○ / P	○ / P	○ / P
» Poltrona Frau® fine grain extended leather interior upholstery for seats with perforated seat squab and backrest centres, upper and lower dashboard, armrests, upper and central door panels	○ / P	○ / P	○ / P	○ / P
» Metallic effect Dark Mirror finish trim for selected interior details (lower console, door panels)	●	●	-	-
» Open pore Radica wood trim for selected interior details (lower console, door panels)	○ / P	○ / P	●	●
» Open pore Rovere Chiaro wood trim for selected interior details (lower console, door panels)	○ / P	○ / P	○ / P	○ / P
» High gloss Ebano wood trim for selected interior details (lower console, door panels)	○ / P	○ / P	○ / P	○ / P
» High gloss carbon fibre finish trim for selected interior details (lower console, door panels)	○ / P	○ / P	○ / P	○ / P
» Multifunction three spoke steering wheel	●	●	●	●
» Steering wheel and gear knob in coloured leather (Nero or Marrone)	●	●	●	●
» Steering wheel and gear knob in Sabbia leather, with matching inserts	○	○	○	○
» Steering wheel and gear knob in coloured leather with wood insert (Nero or Marrone)	○	○	○	○
» Steering wheel in Sabbia leather with wood insert and gear knob	○	○	○	○
» Steering wheel in Nero leather with carbon fibre insert and gear knob	○	○	○	○
» Sport pedals in brushed stainless steel	P	-	-	P
» Maserati “Active shifting” aluminum gear shift paddles mounted on the steering column	○ / P	○	○	○ / P
» Athermic glass	●	●	●	●
» High thermal and noise insulated, laminated glass	○	○	○	○
» Driver seat electrically adjustable (6 ways), passenger front seat manually adjustable (4 ways)	●	●	-	-
» Front seats electrically adjustable (8 ways + 4 ways for lumbar adjustments), with 2 memories for driver’s side	○ / P	○ / P	●	●
» Heated front seats	○ / P	○ / P	○ / P	○ / P
» Heated rear seats	P	P	P	P
» Split folding rear seats (60/40)	●	●	●	●
» Front tunnel with hidden Media Box (includes: USB and Aux-in connection), 2 cup-holder and cigarette lighter	●	●	●	●
» Front armrest with twin mechanical opening, with illuminated storage compartment, air conditioned, two cupholders and 12V socket	●	●	●	●
» Dashboard monthed, Maserati-design clock	●	●	●	●
» Rear armrest, with USB charger unit and 12V socket, 2 hidden cup holders	●	●	●	●
» Storage compartments: driver glove box; passenger glove box; front and rear armrest, map pocket on front and rear doors, seatback net pockets	●	●	●	●



GHIBLI DIESEL

GHIBLI

GHIBLI S

GHIBLI S Q4

» 12V Socket into rear trunk	•	•	•	•
» Velour carpet mats	O / P	O / P	O / P	O / P

COMFORT AND FUNCTIONALITY

» MTC: Maserati Touch Control unit. 8,4" touch screen display, including: radio, CD/DVD audio/video player, SD card reader, USB and Aux-in (into dedicated compartment on front tunnel), Apple chip, climate controls, car set-up, etc)	•	•	•	•
» 7" colour cluster display with on-board computer/driver info	•	•	•	•
» Navigation system	P	P	P	P
» External temperature sensor	•	•	•	•
» Dual zone automatic climate control	•	•	•	•
» Rain Sensor for automatic windscreen wiper function	•	•	•	•
» Power rear sunshade	O / P	O / P	O / P	O / P
» Front seat ventilation	O / P	O / P	O / P	O / P
» Heated steering wheel in fine Poltrona Frau® coloured leather (Nero or Maronne) and wood insert	O	O	O	O
» Heated steering wheel in fine Poltrona Frau® Sabbia leather with matching colour and wood inserts	O	O	O	O
» Steering column with manual height and reach adjustments	•	•	•	•
» Steering column with power height and reach adjustments	O / P	O / P	O / P	O / P
» Power footpedals	P	P	P	P
» Standard audio system with 8 speakers (280W)	•	•	•	•
» Premium audio system with 10 speakers (600W)	O	O	O	O
» Bowers&Wilkins Premium Surround System with 15 speakers (1280W)	O	O	O	O
» Bluetooth	•	•	•	•
» Privacy glass (rear window and rear side windows)	O	O	O	O
» Aluminium Key fob, with key less go function (also includes: lock button, unlock button, trunk opening, exterior light on)	•	•	•	•
» Key-less entry system	P	P	P	P
» Easy entry / exit system for steering column and seat	P	P	P	P
» Alarm system (perimeter and volumetric sensing, anti-lift device, electronic immobilizer)	O	O	O	O
» HomeLink: integrated 3 channel remote garage door opener**	O	O	O	O
» Wi-Fi vehicle hot spot	O	O	O	O
» Smoking kit (ashtray for cup-holder)	O	O	O	O
» Quick user's guide and DVD interactive user guide, browsable via MTC (Maserati Touch Control)	•	•	•	•

* some markets might have a specific equipment

** available from october 2013

• STANDARD ○ OPTIONAL - NOT AVAILABLE P OPTION AS PART OF A PACK

CONVENIENCE PACK

- Parking Distance Sensors (Front/Rear)
- Rear Parking Camera
- Key-less Entry System

PREMIUM PACK

- 8-Way Power Front Seats
- Bi-Xenon Headlamps with Full AFS
- Easy Entry/Exit System
- Power Foot Pedals
- Power Adjustable Steering Wheel
- Auto-dimming Exterior Rear View Mirrors

EXECUTIVE PACK

- Open Pore Wood Trim
- Velour Carpets mats
- Fine Grain Extended Leather Interior

SPORT PACK *

- 19" Proteo Design Alloy Wheels
- "Active Shifting" Gear Shift Paddles
- Sport Suspension
- Brushed Stainless Steel Sports Pedals
- Extended Leather Interior
- Painted Brake Callipers**

COLD WEATHER PACK

- Heated Front Seats
- Heated Rear Seats
- Heated Windshield Washer Nozzles
- Rear Window Power Sunblind

BUSINESS PACK

- Navigation System
- Parking Distance Sensors (Front/Rear)

BUSINESS PACK PLUS

- Navigation System
- Parking Distance Sensors (Front/Rear)
- Heated Front Seats

EXECUTIVE PACK PLUS

- Open Pore Wood trim
- Velour carpets
- Premium Drilled Leather Interior
- Front seats ventilation

* Available on Ghibli Diesel and Ghibli S Q4

** Available on Ghibli S Q4





WWW.MASERATI.COM

WWW.GHIBLI.MASERATI.COM

MASERATI SPA · VIALE CIRO MENOTTI, 322 · 41121 MODENA · ITALY