

2017 Corolla iM



TOYOTA

Let's
Go
Places



Corolla iM shown in Electric Storm Blue. Prototype shown. Production model may vary.

Aggressively practical. The 2017 Corolla iM.

The 2017 Toyota Corolla iM gives you the versatility and performance you need in one incredibly stylish package. Its aggressive body kit is loaded with attitude, making for a ride that refuses to be ignored. A black honeycomb grille, body-colored spoiler and chrome-tipped exhaust show off this hatchback's sporty side. The rear hatch opens to reveal a generous cargo area,²⁵ meaning you won't have to sacrifice fun for practicality. It's time to have the drive of your life. Let's go places.



SPORTIER SUSPENSION

Smooth in the city. Agile on the mountain road. Corolla iM comes standard with a sport-tuned MacPherson strut front suspension and double-wishbone rear suspension. Go hug those corners.



17-IN. ALLOY WHEELS

With their vortex-inspired design, gloss-black accents and machined face, standard 17-in. alloy wheels show off the wilder side of Corolla iM.



Corolla iM interior shown in Black. Prototype shown with options. Production model may vary.

An interior loaded with style and tech.

You'll know you've arrived the second you get inside Corolla iM. The upscale dashboard features flowing lines, premium materials and an attractive contrast dash panel. Piano-black accents surround the large 7-in. touch-screen, bringing the right amount of tech and beauty to this stylish space. A standard dual zone climate control system helps front-seat passengers ride in total comfort. And the sport gauge cluster with 4.2-in. color Multi-Information Display (MID) gives you a convenient way to get information like your average mpg, current song selection and more — all at a glance.



60/40 SPLIT REAR SEATS AND CARGO SPACE²⁵

The rear hatch of Corolla iM opens up to reveal a large cargo space²⁵ ready to help you carry all your favorite stuff. And with iM's standard 60/40 split rear seats, you can easily carry friends, larger cargo items, or both.



BACKUP CAMERA¹⁰

With Corolla iM's standard integrated backup camera, you can back up with confidence and more easily get into and out of those tight parking spots.



DISPLAY AUDIO WITH AVAILABLE NAVIGATION⁸

This system gives you advanced tech like the Aha Radio™ app⁹ with over 100,000 stations, advanced voice recognition,⁴ and six speakers.⁸ And with a standard high-resolution 7-in. touch-screen with available integrated navigation, this system also makes it easy to find your way.

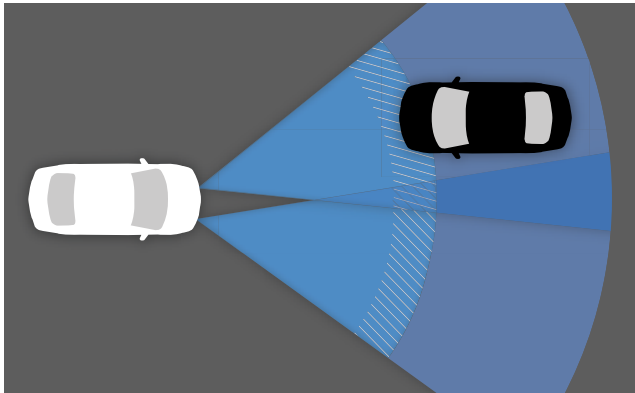


SPORT MODE

The available Sport Mode button unleashes Corolla iM's athletic side, adjusting power and giving you quicker throttle response. When used with manual shift mode, you'll have more control over your favorite winding road.

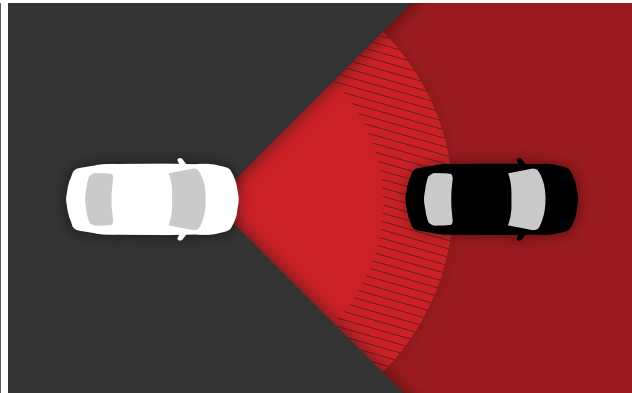
Standard Toyota Safety Sense™ C

Every new Corolla iM comes standard with Toyota Safety Sense™ C (TSS-C)¹² — an active safety package that combines the Pre-Collision System (PCS)¹³, Lane Departure Alert (LDA)¹⁵ and Automatic High Beams (AHB)¹⁴ to assist you. TSS-C's comprehensive features create in-the-moment safety designed to support your awareness and decision-making on the road.



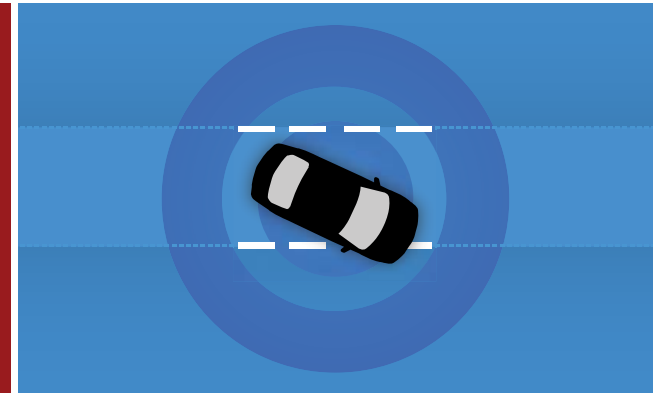
STANDARD AUTOMATIC HIGH BEAMS¹⁴

The standard Automatic High Beam (AHB) system allows for enhanced visibility, helping make nighttime driving safe. Using a camera to detect an oncoming vehicle's headlights, Automatic High Beams can switch between high and low beams for you.



STANDARD PRE-COLLISION SYSTEM¹³

The standard Pre-Collision System (PCS) scans the road ahead for potential vehicle collisions. If the system detects a potential collision with another vehicle, an audio/visual alert and braking assistance are automatically activated. Should the driver not respond and the system determines the possibility of a collision with another vehicle is extremely high, this system may automatically apply the brakes.



STANDARD LANE DEPARTURE ALERT¹⁵

If an inadvertent lane departure is detected and there are visible lane markings, the standard Lane Departure Alert (LDA) system will issue both an audible alert and visual warning on the MID screen.

IM CHOICES



Powertrain

- 1.8L 4-Cylinder Engine with 137 hp @ 6100 rpm
- 6-speed manual transmission or available Continuously Variable Transmission with intelligence and Shift Mode (CVTI-S)
- 28 city/36 hwy/31 combined est. mpg²⁶ (automatic)
27 city/35 hwy/30 combined est. mpg²⁶ (manual)

Exterior Features

- Projector-beam halogen headlights with auto on/off feature
- LED Daytime Running Lights (DRL)
- LED taillights
- Color-keyed power folding heated outside mirrors with LED turn signal indicators
- Front grille with honeycomb mesh pattern and piano-black accents
- Aggressive body kit
- 17-in. alloy wheels with P225/45R17 tires

Interior Features

- Dual zone automatic climate control with dust and pollen filter and push-button controls
- Toyota iM Display Audio — 7-in. touch-screen display, AM/FM player, Aha Radio™ app⁹ with over 100,000 stations, six speakers, auxiliary audio jack, USB 2.0 port² with iPod^{®3} connectivity and control, advanced voice recognition,⁴ hands-free phone capability, phone book access and music streaming⁵ via Bluetooth^{®6} wireless technology, HD Radio™⁷ Technology, and Gracenote[®] album cover art
- Sport instrumentation cluster with speedometer and tachometer, coolant temperature, 4.2-in. color TFT Multi-Information Display with customizable settings, odometer, tripmeters, outside temperature, current/average fuel economy, cruising range, average speed, elapsed time, TPMS;¹¹ ECO indicator, one-touch 3-blink lane change turn signal indicator, and warning messages
- Integrated backup camera¹⁰ with projected path
- Sport fabric-trimmed 6-way adjustable driver's seat with seatback pocket; 4-way adjustable front passenger seat with seatback pocket
- Leather-trimmed tilt/telescopic 3-spoke steering wheel with audio, Multi-Information Display, Bluetooth^{®6} hands-free phone voice-command controls
- 60/40 split fold-down rear seat with center armrest and two cup holders
- USB 2.0 port²

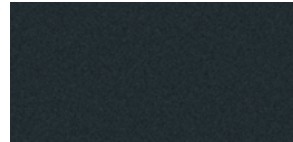
Safety Features

- Toyota Safety Sense™ C (TSS-C)¹² — Pre-Collision System (PCS);¹³ Automatic High Beams (AHB);¹⁴ Lane Departure Alert (LDA)¹⁵
- Star Safety System™ — includes Enhanced Vehicle Stability Control (VSC);¹⁶ Traction Control (TRAC), Anti-lock Brake System (ABS), Electronic Brake-force Distribution (EBD), Brake Assist (BA)¹⁷ and Smart Stop Technology[®] (SST)¹⁸
- Eight airbags¹⁹ — includes driver and front passenger Advanced Airbag System, driver and front passenger seat-mounted side airbags, driver knee airbag, passenger seat-cushion airbag, and front and rear side curtain airbags
- Adjustable front shoulder anchors, driver and front passenger seatbelt pretensioners with force limiters

See numbered footnotes in Disclosures section.

COLOR/TRIM/WHEEL

Color



Black Sand Pearl



Electric Storm Blue



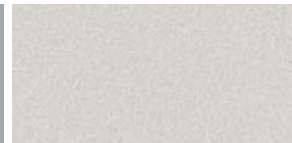
Spring Green Metallic



Barcelona Red Metallic



Classic Silver Metallic



Blizzard Pearl²⁷

ACCESSORIES



Lower body graphic



Rear wind deflector

To learn about all the accessories available for the Corolla iM, visit your local Toyota dealer or toyota.com/corollaim

Trim




Black fabric

Wheel



17-in. alloy wheel

FEATURES¹

EXTERIOR	iM		iM
Projector-beam halogen headlights with auto on/off feature	S	Body kit	S
LED Daytime Running Lights (DRL)	S	17-in. alloy wheels with P225/45R17 tires	S
LED taillights	S	Variable intermittent windshield wipers	S
Front grille with honeycomb mesh pattern and piano-black accents	S	Intermittent rear window wiper	S
Color-keyed power-folding heated outside mirrors with LED turn signal indicators	S	Chrome-tipped exhaust	S
Color-keyed outside door handles	S	Color-keyed roof-mounted antenna	S
Rear spoiler	S		
INTERIOR			
Dual zone automatic climate control with dust and pollen filter and push-button controls	S	Sport instrumentation cluster with speedometer and tachometer, coolant temperature, 4.2-in. color TFT Multi-Information Display with customizable settings, odometer, tripmeters, outside temperature, current/average fuel economy, cruising range, average speed, elapsed time; TPMS; ¹¹ ECO indicator, one-touch 3-blink lane change turn signal indicator, and warning messages	S
Toyota iM Display Audio — 7-in. touch-screen display, AM/FM player, Aha Radio™ app ⁹ with over 100,000 stations, six speakers, auxiliary audio jack, USB 2.0 port ² with iPod [®] connectivity and control, advanced voice recognition, ⁴ hands-free phone capability, phone book access and music streaming ⁵ via <i>Bluetooth</i> [®] wireless technology, HD Radio™ ⁷ Technology, and Gracenote [®] album cover art	S	Power door locks	S
Toyota iM Display Audio with Navigation [®] — 7-in. touch-screen display, Integrated Navigation [®] Aha Radio™ app ⁹ with over 100,000 stations, AM/FM player, six speakers, auxiliary audio jack, USB 2.0 port ² with iPod [®] connectivity and control, advanced voice recognition, ⁴ hands-free phone capability, phone book access and music streaming ⁵ via <i>Bluetooth</i> [®] wireless technology, HD Radio™ ⁷ Technology, and Gracenote [®] album cover art	O	Multi-function in-key remote keyless entry system with lock, unlock and panic functions, and remote illuminated entry	S
Integrated backup camera ¹⁰ with projected path	S	Power windows with driver-side one-touch up/down	S
Sport fabric-trimmed 6-way adjustable driver's seat with seatback pocket; 4-way adjustable front passenger seat with seatback pocket	S	Rear window defogger	S
60/40 split fold-down rear seat with center armrest and two cup holders	S	Day/night rearview mirror	S
Normal and Sport driving modes	O	Overhead console with maplights	S
Leather-trimmed tilt/telescopic 3-spoke steering wheel with audio, Multi-Information Display, <i>Bluetooth</i> [®] hands-free phone voice-command controls	S	Center console with storage compartment	S
Sport instrumentation cluster with speedometer and tachometer, coolant temperature, 4.2-in. color TFT Multi-Information Display with customizable settings, odometer, tripmeters, outside temperature, current/average fuel economy, cruising range, average speed, elapsed time, shift position; TPMS; ¹¹ ECO indicator, one-touch 3-blink lane change turn signal indicator, and warning messages	O	Passenger-side glove compartment	S
		Front- and rear-door storage pockets with sculpted bottle holders	S
SAFETY AND CONVENIENCE		One 12V auxiliary power outlet	S
Toyota Safety Sense™ C (TSS-C) ¹² — Pre-Collision System (PCS); ¹³ Automatic High Beams (AHB); ¹⁴ Lane Departure Alert (LDA) ¹⁵	S	USB 2.0 port ²	S
 Star Safety System™ — includes Enhanced Vehicle Stability Control (VSC); ¹⁶ Traction Control (TRAC), Anti-lock Brake System (ABS), Electronic Brake-force Distribution (EBD), Brake Assist (BA) ¹⁷ and Smart Stop Technology [®] (SST) ¹⁸	S	Two front and two rear cup holders	S
Eight airbags ¹⁹ — includes driver and front passenger Advanced Airbag System, driver and front passenger seat-mounted side airbags, driver knee airbag, passenger seat-cushion airbag, and front and rear side curtain airbags	S	Digital clock	S
Driver and front passenger Whiplash-Injury-Lessening (WIL) seats ²⁰	S		
3-point seatbelts for all seating positions; driver-side Emergency Locking Retractor (ELR) and Automatic/Emergency Locking Retractor (ALR/ELR) on all passenger belts	S	Adjustable front shoulder anchors, driver and front passenger seatbelt pretensioners with force limiters	S
		LATCH (Lower Anchors and Tethers for Children) includes lower anchors on outboard rear seats and tether anchors on all rear seats	S
		Tire Pressure Monitor System (TPMS) ¹¹	S
		Engine immobilizer ²¹	S
		Hill Start Assist Control (HAC) ²²	S
		ToyotaCare ²³ featuring a no cost maintenance plan with roadside assistance ²⁴	S

S = Standard O = Optional

SPECIFICATIONS

MECHANICAL/PERFORMANCE	iM
ENGINE	
1.8-Liter 4-Cylinder DOHC 16-Valve with Dual Variable Valve Timing with intelligence (VVT-i); 137 hp @ 6100 rpm; 126 lb.-ft. @ 4000 rpm	S
Normal and Sport driving modes	O
EMISSION RATING	
Ultra Low Emission Vehicle II (ULEV-II)	S
TRANSMISSION	
6-speed manual transmission	S
Continuously Variable Transmission with intelligence and Shift Mode (CVTi-S)	O
Drivetrain	
Front-Wheel Drive (FWD)	S
BODY CONSTRUCTION	
Unitized body	S
SUSPENSION	
MacPherson strut front suspension with stabilizer bar; double-wishbone rear suspension with rear stabilizer bar	S
STEERING	
Electric Power Steering (EPS); power-assisted rack-and-pinion	S
Turning circle diameter, curb to curb (ft.)	37.4
BRAKES	
Power-assisted ventilated 11.7-in. front disc brakes; solid 11-in. rear disc brakes and Star Safety System™	S

DIMENSIONS	iM
EXTERIOR (in.)	
Overall height	55.3
Overall width	69.3
Overall length	170.5
Wheelbase	102.4
Track, front/rear	59.6/59.3
Ground clearance	5.5
INTERIOR (front/rear) (in.)	
Head room	39.7/37.5
Shoulder room	54.3/54.1
Leg room	41.7/32.7
Seating capacity	5
WEIGHTS AND CAPACITIES	
Curb weight (lb.) manual/CVTi-S	2943/3031
EPA passenger volume (cu. ft.)	90.4
Cargo volume (cu. ft.) ²⁵	20.8
Fuel tank (gal.)	14
Coefficient of drag (Cd)	0.3
TIRES	
All-Season	S
Temporary	S
MILEAGE ESTIMATES (mpg city/highway/combined)²⁶	
CVTi-S	28/36/31
6-speed manual transmission	27/35/30

S = Standard **O** = Optional

WARRANTIES

Every Toyota Car, Truck and SUV is built to exceptional standards. And that's not idle boasting. We back it up with these Limited Warranty Coverages:

Basic: 36 months/36,000 miles (all components other than normal wear and maintenance items).

Powertrain: 60 months/60,000 miles (engine, transmission/transaxle, drive system, seatbelts and airbags).

Rust-Through: 60 months/unlimited miles (corrosion perforation of sheet metal).

Emissions: Coverages vary under Federal and California regulations. Refer to applicable *Warranty and Maintenance Guide* for details.

Accessories: For Genuine Toyota Accessories purchased at the time of the new vehicle purchase, the Toyota Accessory Warranty coverage is in effect for 36 months/36,000 miles from the vehicle's in-service date, which is the same coverage as the Toyota New Vehicle Limited Warranty.

For Genuine Toyota Accessories purchased after the new vehicle purchase the coverage is 12 months, regardless of mileage, from the date the accessory was installed on the vehicle, or the remainder of any applicable new vehicle warranty, whichever provides greater coverage, with the exception of car covers. Car covers are warranted for 12 months from the date of purchase and do not assume any coverage under the Toyota New Vehicle Limited Warranty.

You may be eligible for transportation assistance if it's necessary that your vehicle be kept overnight for repairs covered under warranty. Please see your authorized Toyota dealership for further details.

For complete details about Toyota's warranties, please visit www.toyota.com, refer to the applicable *Warranty and Maintenance Guide* or see your Toyota dealer.

CARS BUILT FOR THE WAY YOU LIVE

At Toyota, we build cars for how you live. From building advanced safety features designed to help prevent crashes to driving cross-country to understand how we can make your driving experience better, our work starts with understanding your needs. Building cars for how you live also means thinking about tomorrow — from fuel efficiency and environmental innovations, to things beyond cars, like a bicycle that you can control with your mind. And because what we learn building cars can help improve lives in other places, we do things like help communities rebuild their homes quickly after a disaster and work with soup kitchens to help them serve more people faster. Toyota. Built for how you live. Together we are going places.

DISCLOSURES

1. Toyota strives to build vehicles to match customer interest and thus they typically are built with popular options and option packages. Not all options/packages are available separately and some may not be available in all regions of the country. If you would prefer a vehicle with no or different options, contact your dealer to check for current availability or the possibility of placing a special order. **2.** May not be compatible with all mobile phones, MP3/WMA players and like models. **3.** iPod® and iPhone® are registered trademarks of Apple Inc. All rights reserved. **4.** Advanced voice recognition capabilities vary by head unit. **5.** Apps/services vary by phone/carrier; functionality depends on many factors. Select apps use large amounts of data; you are responsible for charges. Apps and services subject to change. See toyota.com/entune for details. **6.** Concentrating on the road should always be your first priority while driving. Do not use the hands-free phone system if it will distract you. The *Bluetooth*® word mark and logos are registered trademarks owned by *Bluetooth* SIG, Inc. and any use of such marks by Toyota is under license. A compatible *Bluetooth*®-enabled phone must first be paired. Phone performance depends on software, coverage and carrier. **7.** Be sure to obey traffic regulations and maintain awareness of road and traffic conditions at all times. HD Radio™ Technology manufactured under license from iBiquity Digital Corporation U.S. and Foreign Patents. HD Radio™ and the HD, HD Radio, and “Arc” logos are proprietary trademarks of iBiquity Digital Corp. **8.** Availability and accuracy of the information provided by the navigation system is dependent upon many factors. Use common sense when relying on information provided. Services and programming subject to change. Services not available in every city or roadway. Updates may be available from your dealer at an additional cost. See *Owner's Manual* for details. **9.** Aha Radio is a trademark of Harman International Industries Inc. Apps/services vary by phone carrier and are subject to change. Data charges may apply. **10.** The backup camera does not provide a comprehensive view of the rear area of the vehicle. You should also look around outside your vehicle and use your mirrors to confirm rearward clearance. Environmental conditions may limit effectiveness and view may become obscured. See *Owner's Manual* for details. **11.** The Toyota Tire Pressure Monitor alerts the driver when tire pressure is critically low. For optimal tire wear and performance, tire pressure should be checked regularly with a gauge; do not rely solely on the monitor system. See *Owner's Manual* for details. **12.** Drivers should always be responsible for their own safe driving. Please always pay attention to your surroundings and drive safely. Depending on the conditions of roads, vehicles, weather, etc., the system(s) may not work as intended. See *Owner's Manual* for details. **13.** The TSS Pre-Collision System is designed to help avoid or reduce the crash speed and damage in certain frontal collisions only. It is not a substitute for safe and attentive driving. System effectiveness depends on many factors, such as speed, driver input and road conditions. See *Owner's Manual* for details. **14.** Automatic High Beams operate at speeds above 25 mph. Factors such as a dirty windshield, weather, lighting and terrain limit effectiveness, requiring the driver to manually operate the high beams. See *Owner's Manual* for details. **15.** Lane Departure Alert is designed to read lane markers under certain conditions, and provide visual and audible alerts when lane departure is detected. It is not a collision-avoidance system or a substitute for safe and attentive driving. Effectiveness depends on many factors. See *Owner's Manual* for details. **16.** Vehicle Stability Control is an electronic system designed to help the driver maintain vehicle control under adverse conditions. It is not a substitute for safe driving practices. Factors including speed, road conditions and driver steering input can all affect whether VSC will be effective in preventing a loss of control. See *Owner's Manual* for details. **17.** Brake Assist is designed to help the driver take full advantage of the benefits of ABS. It is not a substitute for safe driving practices. Braking effectiveness also depends on proper brake-system maintenance and tire and road conditions. See *Owner's Manual* for details. **18.** Smart Stop Technology® operates only in the event of certain contemporaneous brake and accelerator pedal applications. When engaged, the system will reduce power to help the brakes bring the vehicle to a stop. Factors including speed, road conditions and driver input can all impact stopping distance. Smart Stop Technology® is not a substitute for safe and attentive driving and does not guarantee instant stopping. See *Owner's Manual* for details. **19.** All the airbag systems are Supplemental Restraint Systems. All airbags (if installed) are designed to inflate only under certain conditions and in certain types of severe collisions: typically, frontal and knee airbags inflate in frontal collisions, side torso and side curtain airbags inflate in side collisions and roll-sensing curtain airbags inflate at a severe roll angle or roll rate. To decrease the risk of injury from an inflating airbag, always wear seatbelts, sit upright in the middle of the seat as far back as possible and do not lean against the door. Do not put objects in front of an airbag or around the seatback. Do not use a rearward-facing child seat in any front passenger seat. The force of an inflating airbag may cause serious injury or death. See your *Owner's Manual* for further information/warnings. **20.** Whiplash-Injury-Lessening front seats can help reduce the severity of whiplash injury in certain rear-end collisions. **21.** The engine immobilizer is a state-of-the-art anti-theft system. When you insert your key into the ignition switch or bring a Smart Key fob into the vehicle, the key transmits an electronic code to the vehicle. The engine will only start if the code in the transponder chip inside the key/fob matches the code in the vehicle's immobilizer. Because the transponder chip is embedded in the key/fob, it can be costly to replace. If you lose a key or fob, your Toyota dealer can help, or you can find a qualified independent locksmith to perform high-security key services by consulting your local Yellow Pages or by contacting www.aloa.org. **22.** Hill Start Assist Control is designed to help minimize backward rolling on steep ascents. It is not a substitute for safe driving judgment and practices. Factors including grade, surface conditions and driver input can all affect whether HAC will be effective in preventing a loss of control. See *Owner's Manual* for details. **23.** ToyotaCare covers normal factory scheduled service for 2 years or 25,000 miles, whichever comes first. 24-hour roadside assistance is also included for 2 years and unlimited miles. See Toyota dealer for details and exclusions. Valid only in the continental U.S. and Alaska. **24.** Does not include parts and fluids, except emergency fuel delivery. Valid only in the continental U.S. and Alaska. **25.** Cargo and load capacity limited by weight and distribution. **26.** 2017 EPA-estimated mileage. Actual mileage will vary. **27.** Extra-cost color.

Some vehicles are shown with available equipment. Seatbelts should be worn at all times. For details on vehicle specifications, standard features and available equipment in your area, contact your Toyota dealer. A vehicle with particular equipment may not be available at the dealership. Ask your Toyota dealer to help locate a specifically equipped vehicle.

All information presented herein is based on data available at the time of posting, is subject to change without notice and pertains specifically to mainland U.S.A. vehicles only. Prototypes shown. Actual production vehicles may vary.



For Toyota Mobility program details, go to www.toyota.com/mobility or call the Toyota Customer Assistance Center at 1-800-331-4331